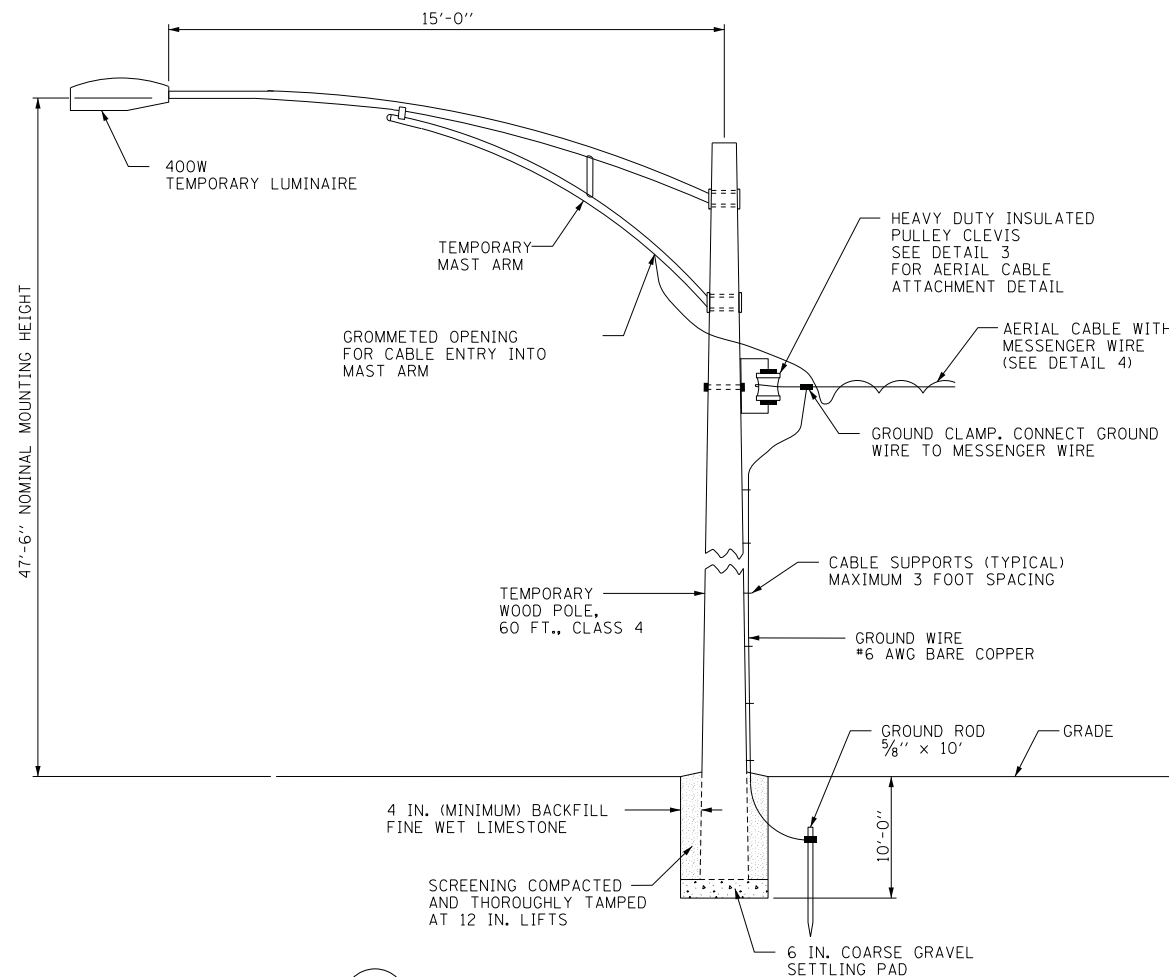
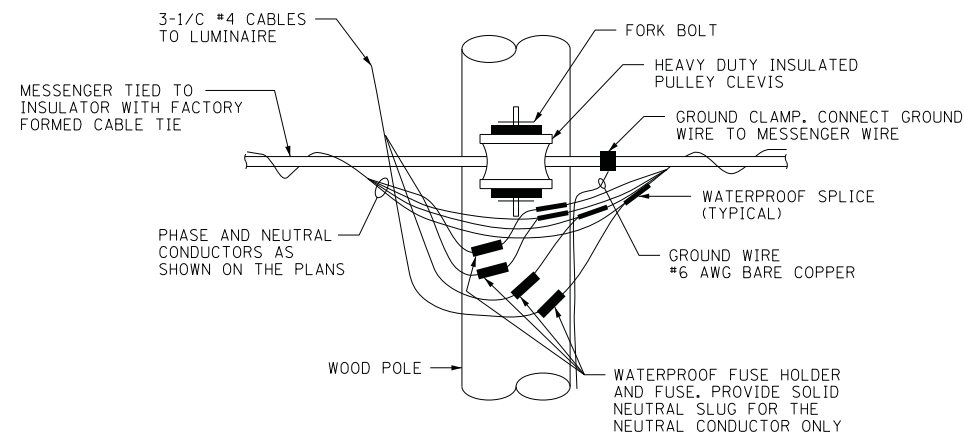


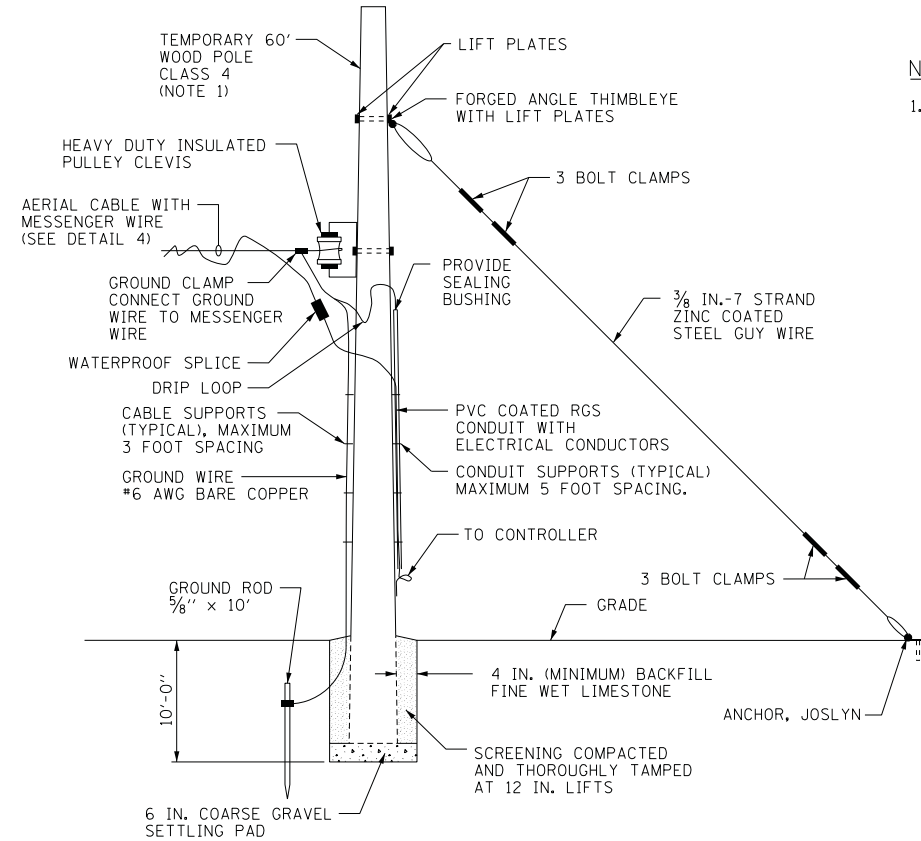
| | | | | |
|---------------------|-------------|------------------|--------------|-----------|
| F.A.P. RTE. | SECTION | COUNTY | TOTAL SHEETS | SHEET NO. |
| 307 | 130N-3 (11) | DUPAGE | 141 | 121 |
| STA. | TO STA. | | | |
| FED. ROAD DIST. NO. | ILLINOIS | FED. AID PROJECT | | |



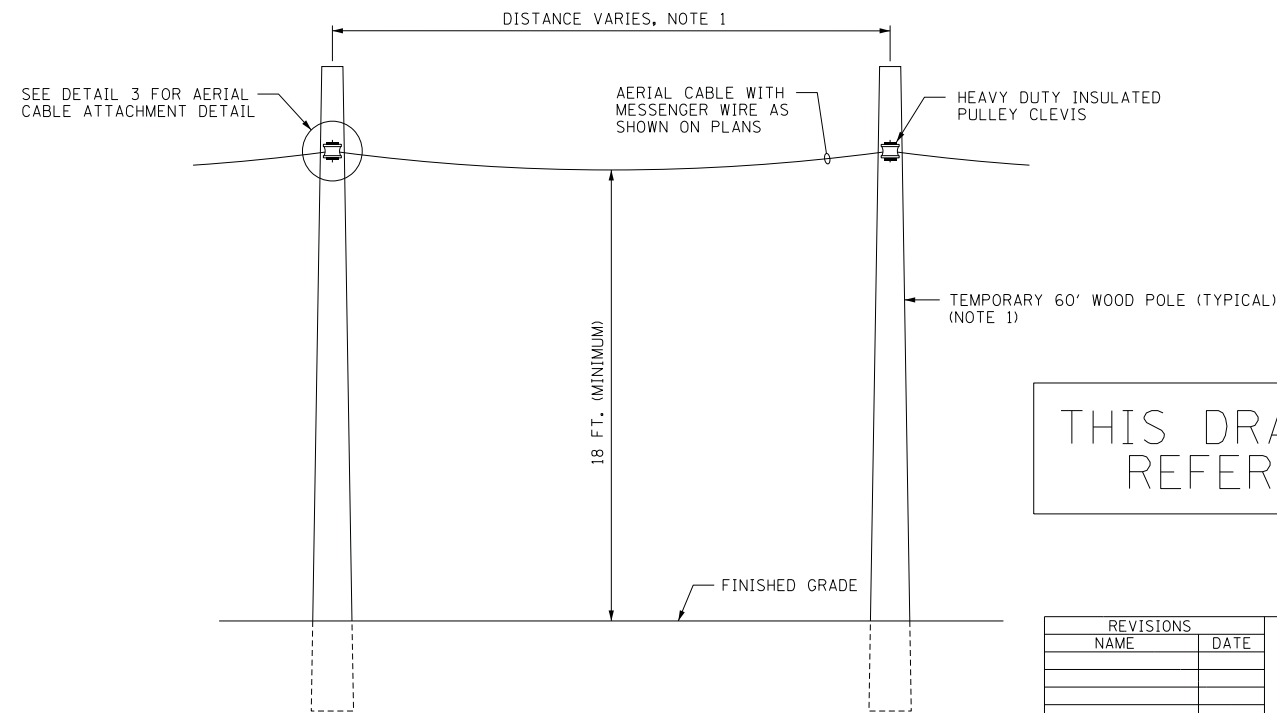
1 TEMPORARY LIGHTING UNIT INSTALLATION DETAIL
 E-06 WOOD POLE INSTALLATION IS SIMILAR NOT TO SCALE



3 TEMPORARY WOOD POLE AERIAL CABLE ATTACHMENT DETAIL
 E-06 NOT TO SCALE



2 TEMPORARY WOOD END POLE INSTALLATION DETAIL
 E-06 NOT TO SCALE



4 AERIAL CABLE INSTALLATION DETAIL
 E-06 NOT TO SCALE

NOTES

- WOOD POLE IS SHOWN WITHOUT MAST ARM AND LUMINAIRE.

60R46

THIS DRAWING IS FOR REFERENCE ONLY

E-06

| REVISIONS | |
|-----------|------|
| NAME | DATE |
| | |
| | |
| | |
| | |
| | |
| | |
| | |
| | |
| | |
| | |

ILLINOIS DEPARTMENT OF TRANSPORTATION
 F.A.P. ROUTE 307 (ILLINOIS ROUTE 64)

TEMPORARY ROADWAY LIGHTING WOOD POLE DETAILS

SCALE: NONE
 DATE: FEBRUARY 1, 2013

DRAWN BY: AFC
 CHECKED BY: WDS

