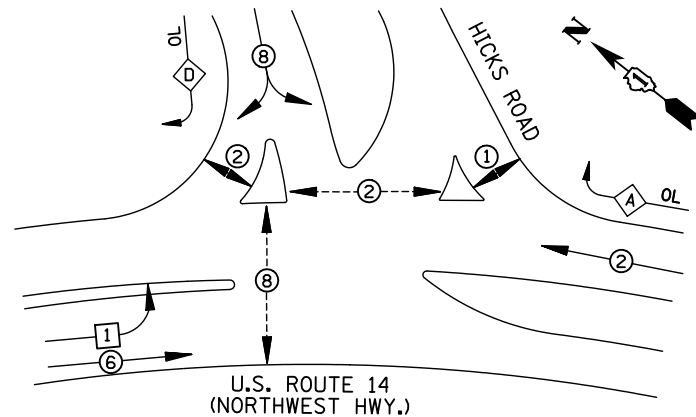
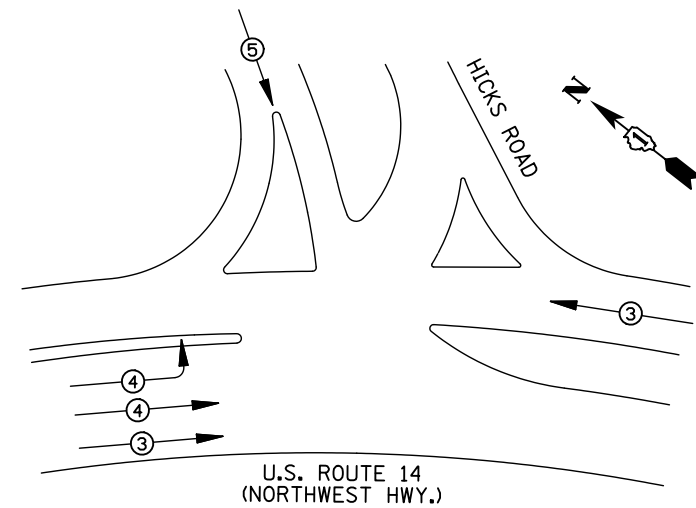


**EXISTING AND PROPOSED CONTROLLER SEQUENCE**



**EXISTING AND PROPOSED PHASE DESIGNATION DIAGRAM**



EMERGENCY VEHICLE PREEMPTORS			
EMERGENCY VEHICLE PREEMPTOR	3	4	5
MOVEMENT	←	→	↓

**EXISTING AND PROPOSED EMERGENCY VEHICLE PREEMPTION SEQUENCE**

I.D.O.T TRAFFIC SIGNAL INSTALLATION ELECTRICAL SERVICE REQUIREMENTS						TOTAL WATTAGE
TYPE	NO. LAMPS	WATTAGE		%OPERATION		
		INCAND.	LED			
SIGNAL (RED)	13	135	17	0.50		110.5
(YELLOW)	13	135	25	0.25		81.3
(GREEN)	13	135	15	0.25		48.8
ARROW	8	135	12	0.10		9.6
PED. SIGNAL	8	90	25	1.00		200
CONTROLLER	1	100	100	1.00		100
ILLUM. SIGN		84		0.05		
FLASHER		135	25	0.50		
ENERGY COSTS TO: ILLINOIS DEPARTMENT OF TRANSPORTATION 201 W. CENTER COURT SCHAUMBURG, IL 60196						TOTAL = 550.2
ENERGY SUPPLY CONTACT: DAVE SCHACHT PHONE: 1-(630) 847-2129 COMPANY: COMED						

- LEGEND**
- ⊕ DUAL ENTRY PHASE
  - ⊞ SINGLE ENTRY PHASE
  - ⊙ PEDESTRIAN PHASE
  - NUMBER REFERS TO ASSOCIATED PHASE
  - OL OVERLAP

**EXISTING RIGHT TURN OVERLAP DESIGNATION**

OVERLAP LETTER	PERMISSIVE PHASE	PROTECTED PHASE	DISPLAY
A	= 2 +	8 -	2
D	= 8 +	1 -	8

**PROPOSED RIGHT TURN OVERLAP DESIGNATION**

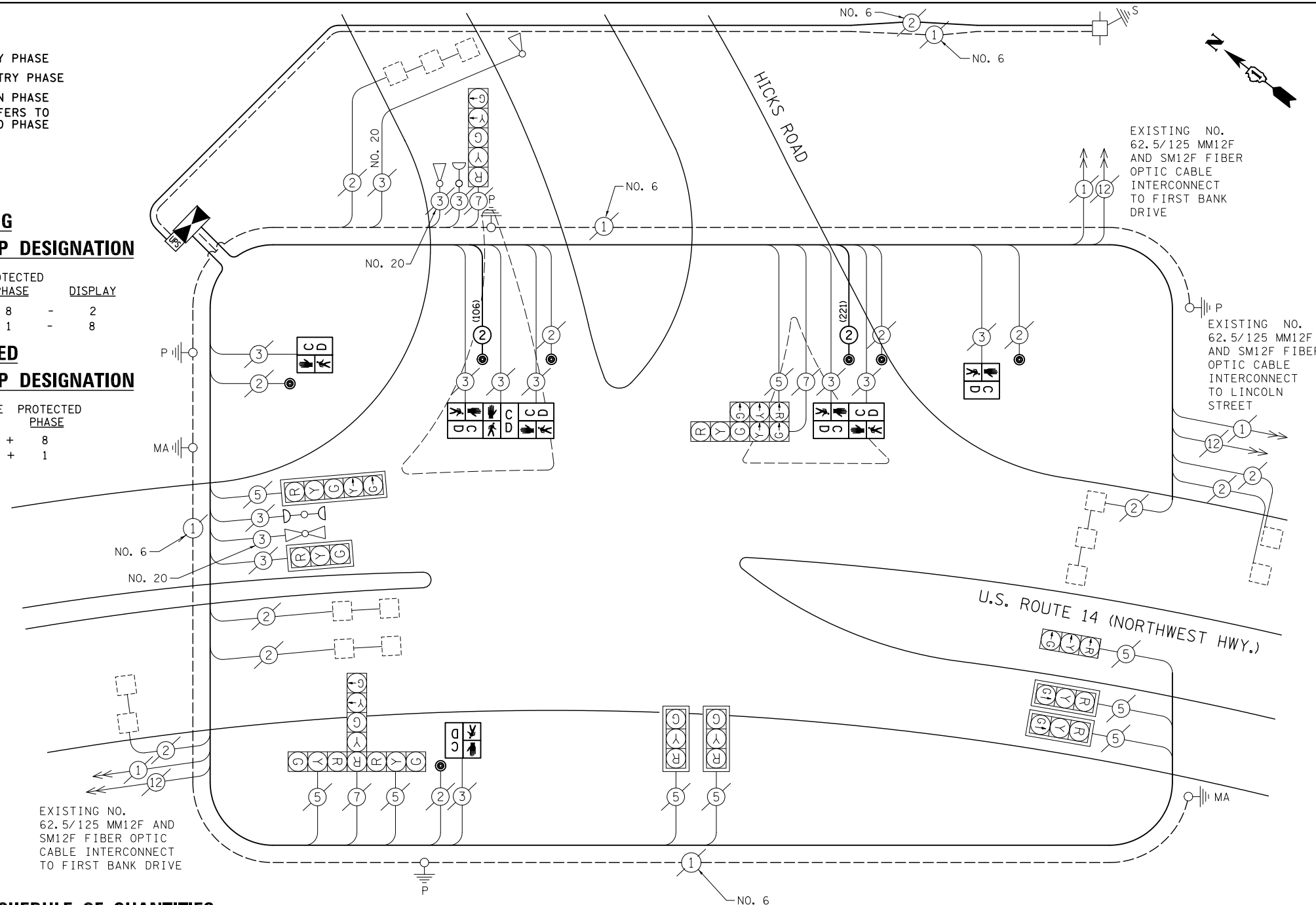
OVERLAP LETTER	PERMISSIVE PHASE	PROTECTED PHASE
A	= 2 +	8
D	= 8 +	1

**SCHEDULE OF QUANTITIES**

- ITEM**
- PORTLAND CEMENT CONCRETE SIDEWALK 5 INCH
  - DETECTABLE WARNINGS
  - SIDEWALK REMOVAL
  - SIGN PANEL, TYPE 1
  - THERMOPLASTIC PAVEMENT MARKING - LINE 6"
  - PAVEMENT MARKING REMOVAL
  - MAINTENANCE OF EXISTING TRAFFIC SIGNAL INSTALLATION
  - TRANSCEIVER - FIBER OPTIC
  - ELECTRIC CABLE IN CONDUIT, SIGNAL NO. 14 2C
  - PEDESTRIAN SIGNAL HEAD, LED, 1-FACE, BRACKET MOUNTED WITH COUNTDOWN TIMER
  - PEDESTRIAN SIGNAL HEAD, LED, 2-FACE, BRACKET MOUNTED WITH COUNTDOWN TIMER
  - PEDESTRIAN SIGNAL HEAD, LED, 3-FACE, BRACKET MOUNTED WITH COUNTDOWN TIMER
  - INDUCTIVE LOOP DETECTOR
  - PEDESTRIAN PUSH BUTTON
  - RELOCATE EXISTING EMERGENCY VEHICLE PRIORITY SYSTEM, PHASING UNIT
  - REMOVE EXISTING TRAFFIC SIGNAL EQUIPMENT
  - BRICK SIDEWALK
  - BRICK SIDEWALK REMOVAL
  - FULL-ACTUATED CONTROLLER AND TYPE IV CABINET, SPECIAL
  - UNINTERRUPTIBLE POWER SUPPLY, SPECIAL
  - 100% COST TO THE VILLAGE OF PALATINE

UNIT	QUANTITY
SQ FT	80
SQ FT	80
SQ FT	80
SQ FT	7.5
FOOT	367
SQ FT	183.5
EACH	1
EACH	1
FOOT	327
EACH	3
EACH	1
EACH	1
EACH	1
EACH	7
EACH	7
EACH	1
EACH	1
SQ FT	88
SQ FT	168
EACH	1
EACH	1

**CABLE PLAN**



**NOTE:**  
 ○ (XXX) DENOTES CABLE LENGTH TO CONTROLLER CABINET WITH SLACK CABLE.

TS# 11985

PREPARED BY:  
**CEMCON, Ltd.**  
 Consulting Engineers, Land Surveyors & Planners  
 2280 White Oak Circle, Suite 100  
 Aurora, Illinois 60504-9675  
 Ph: 630.862.2100 Fax: 630.862.2199  
 E-Mail: cadd@cemcon.com Website: www.cemcon.com

**STATE OF ILLINOIS DEPARTMENT OF TRANSPORTATION**

**SCHEDULE OF QUANTITIES, CABLE PLAN AND PHASE DESIGNATION DIAGRAM U.S. ROUTE 14 (NORTHWEST HWY.) AT HICKS ROAD**

SCALE: N.T.S. SHEET NO. OF SHEETS STA. TO STA.

F.A.U. RTE.	SECTION	COUNTY	TOTAL SHEETS	SHEET NO.
305	2012-042 TS	COOK	36	25

CONTRACT NO. 60T90  
 FED. ROAD DIST. NO. ILLINOIS FED. AID PROJECT

FILE NAME = \MICROST\352103\ US 14 @ BENTN CAB.DGN  
 USER NAME = JGC  
 DESIGNED - KK  
 DRAWN - RDS/JGC  
 PLOT SCALE = 1"=20'  
 PLOT DATE = 03-07-13  
 CHECKED - BPT  
 DATE - 03-07-13