

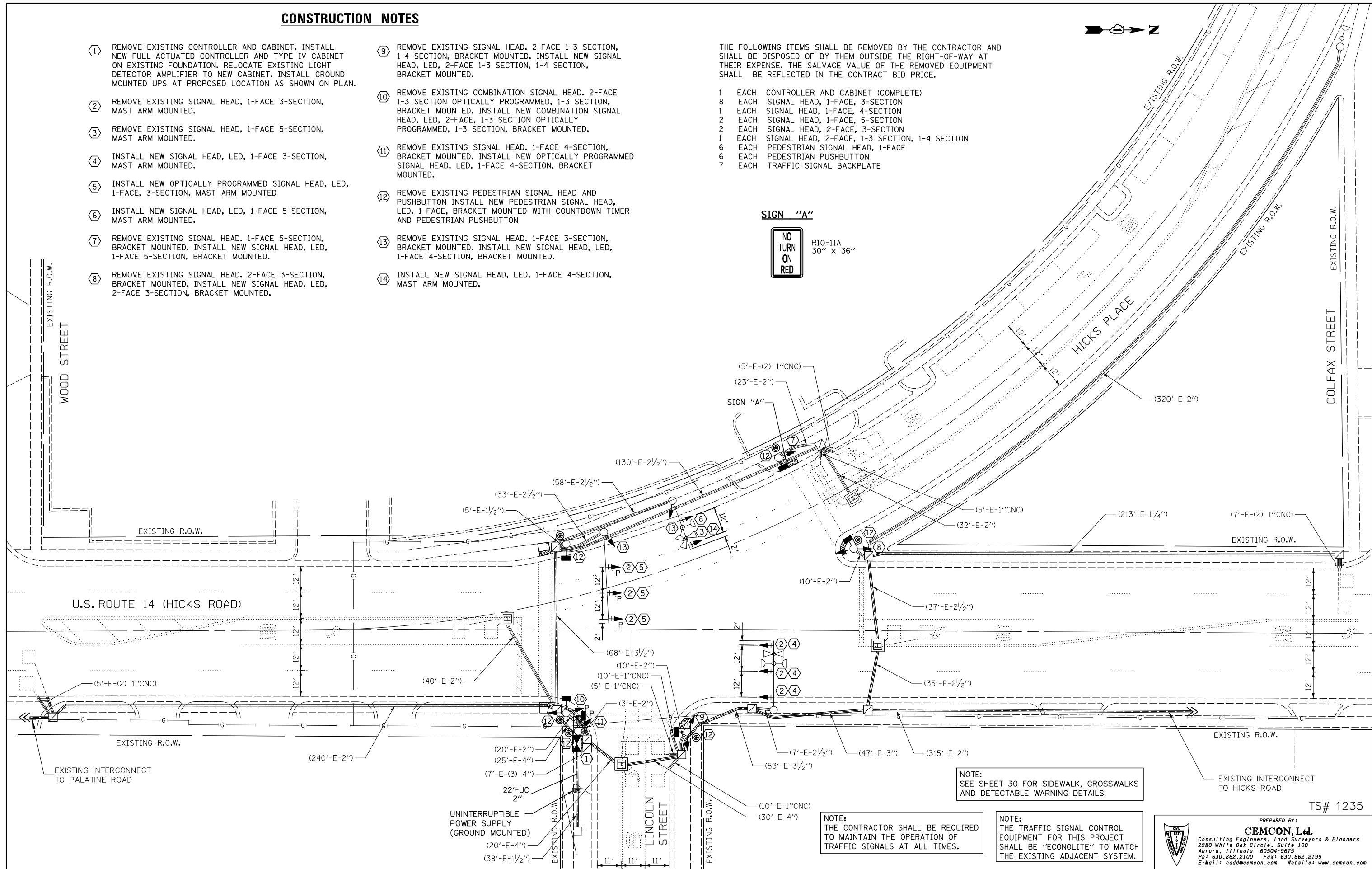
CONSTRUCTION NOTES

- ① REMOVE EXISTING CONTROLLER AND CABINET. INSTALL NEW FULL-ACTUATED CONTROLLER AND TYPE IV CABINET ON EXISTING FOUNDATION. RELOCATE EXISTING LIGHT DETECTOR AMPLIFIER TO NEW CABINET. INSTALL GROUND MOUNTED UPS AT PROPOSED LOCATION AS SHOWN ON PLAN.
- ② REMOVE EXISTING SIGNAL HEAD, 1-FACE 3-SECTION, MAST ARM MOUNTED.
- ③ REMOVE EXISTING SIGNAL HEAD, 1-FACE 5-SECTION, MAST ARM MOUNTED.
- ④ INSTALL NEW SIGNAL HEAD, LED, 1-FACE 3-SECTION, MAST ARM MOUNTED.
- ⑤ INSTALL NEW OPTICALLY PROGRAMMED SIGNAL HEAD, LED, 1-FACE, 3-SECTION, MAST ARM MOUNTED
- ⑥ INSTALL NEW SIGNAL HEAD, LED, 1-FACE 5-SECTION, MAST ARM MOUNTED.
- ⑦ REMOVE EXISTING SIGNAL HEAD, 1-FACE 5-SECTION, BRACKET MOUNTED. INSTALL NEW SIGNAL HEAD, LED, 1-FACE 5-SECTION, BRACKET MOUNTED.
- ⑧ REMOVE EXISTING SIGNAL HEAD, 2-FACE 3-SECTION, BRACKET MOUNTED. INSTALL NEW SIGNAL HEAD, LED, 2-FACE 3-SECTION, BRACKET MOUNTED.
- ⑨ REMOVE EXISTING SIGNAL HEAD, 2-FACE 1-3 SECTION, 1-4 SECTION, BRACKET MOUNTED. INSTALL NEW SIGNAL HEAD, LED, 2-FACE 1-3 SECTION, 1-4 SECTION, BRACKET MOUNTED.
- ⑩ REMOVE EXISTING COMBINATION SIGNAL HEAD, 2-FACE 1-3 SECTION OPTICALLY PROGRAMMED, 1-3 SECTION, BRACKET MOUNTED. INSTALL NEW COMBINATION SIGNAL HEAD, LED, 2-FACE, 1-3 SECTION OPTICALLY PROGRAMMED, 1-3 SECTION, BRACKET MOUNTED.
- ⑪ REMOVE EXISTING SIGNAL HEAD, 1-FACE 4-SECTION, BRACKET MOUNTED. INSTALL NEW OPTICALLY PROGRAMMED SIGNAL HEAD, LED, 1-FACE 4-SECTION, BRACKET MOUNTED.
- ⑫ REMOVE EXISTING PEDESTRIAN SIGNAL HEAD AND PUSHBUTTON INSTALL NEW PEDESTRIAN SIGNAL HEAD, LED, 1-FACE, BRACKET MOUNTED WITH COUNTDOWN TIMER AND PEDESTRIAN PUSHBUTTON
- ⑬ REMOVE EXISTING SIGNAL HEAD, 1-FACE 3-SECTION, BRACKET MOUNTED. INSTALL NEW SIGNAL HEAD, LED, 1-FACE 4-SECTION, BRACKET MOUNTED.
- ⑭ INSTALL NEW SIGNAL HEAD, LED, 1-FACE 4-SECTION, MAST ARM MOUNTED.

THE FOLLOWING ITEMS SHALL BE REMOVED BY THE CONTRACTOR AND SHALL BE DISPOSED OF BY THEM OUTSIDE THE RIGHT-OF-WAY AT THEIR EXPENSE. THE SALVAGE VALUE OF THE REMOVED EQUIPMENT SHALL BE REFLECTED IN THE CONTRACT BID PRICE.

- 1 EACH CONTROLLER AND CABINET (COMPLETE)
- 8 EACH SIGNAL HEAD, 1-FACE, 3-SECTION
- 1 EACH SIGNAL HEAD, 1-FACE, 4-SECTION
- 2 EACH SIGNAL HEAD, 1-FACE, 5-SECTION
- 2 EACH SIGNAL HEAD, 2-FACE, 3-SECTION
- 1 EACH SIGNAL HEAD, 2-FACE, 1-3 SECTION, 1-4 SECTION
- 6 EACH PEDESTRIAN SIGNAL HEAD, 1-FACE
- 6 EACH PEDESTRIAN PUSHBUTTON
- 7 EACH TRAFFIC SIGNAL BACKPLATE

SIGN "A"



NOTE: SEE SHEET 30 FOR SIDEWALK, CROSSWALKS AND DETECTABLE WARNING DETAILS.

NOTE: THE CONTRACTOR SHALL BE REQUIRED TO MAINTAIN THE OPERATION OF TRAFFIC SIGNALS AT ALL TIMES.

NOTE: THE TRAFFIC SIGNAL CONTROL EQUIPMENT FOR THIS PROJECT SHALL BE "ECONOLITE" TO MATCH THE EXISTING ADJACENT SYSTEM.

TS# 1235

PREPARED BY:
CEMCON, Ltd.
 Consulting Engineers, Land Surveyors & Planners
 2280 White Oak Circle, Suite 100
 Aurora, Illinois 60504-9675
 Ph: 630.862.2100 Fax: 630.862.2199
 E-Mail: cadd@cemcon.com Website: www.cemcon.com

FILE NAME =	USER NAME = JGC	DESIGNED - KK	REVISED -
\\MICROST\352103\ US14 @ LINCOLN SIG.DGN		DRAWN - RDS/JGC	REVISED -
	PLOT SCALE = 1"=20'	CHECKED - BPT	REVISED -
	PLOT DATE = 03-07-13	DATE - 03-07-13	REVISED -

**STATE OF ILLINOIS
DEPARTMENT OF TRANSPORTATION**

**TRAFFIC SIGNAL MODERNIZATION PLAN
U.S. ROUTE 14 (HICKS ROAD) AT LINCOLN STREET**

SCALE: 1"=20' SHEET NO. OF SHEETS STA. TO STA.

F.A.U. RTE.	SECTION	COUNTY	TOTAL SHEETS	SHEET NO.
305	2012-042 TS	COOK	36	26
CONTRACT NO. 60T90				
FED. ROAD DIST. NO. ILLINOIS FED. AID PROJECT				