

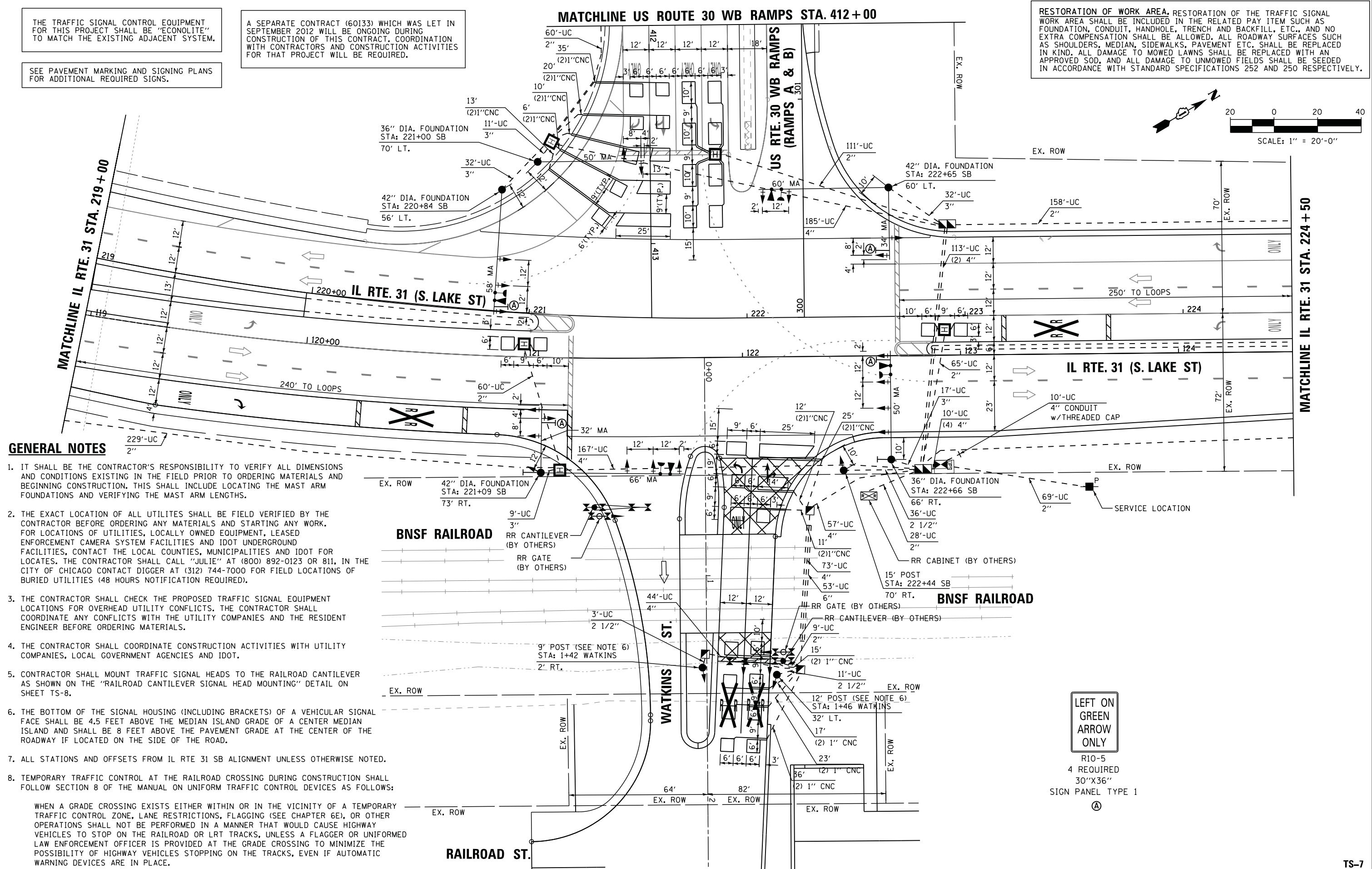
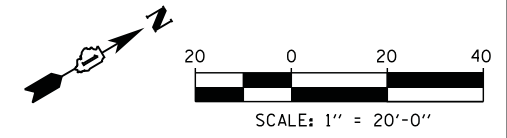


THE TRAFFIC SIGNAL CONTROL EQUIPMENT FOR THIS PROJECT SHALL BE "ECONOLITE" TO MATCH THE EXISTING ADJACENT SYSTEM.

SEE PAVEMENT MARKING AND SIGNING PLANS FOR ADDITIONAL REQUIRED SIGNS.

A SEPARATE CONTRACT (60133) WHICH WAS LET IN SEPTEMBER 2012 WILL BE ONGOING DURING CONSTRUCTION OF THIS CONTRACT. COORDINATION WITH CONTRACTORS AND CONSTRUCTION ACTIVITIES FOR THAT PROJECT WILL BE REQUIRED.

RESTORATION OF WORK AREA. RESTORATION OF THE TRAFFIC SIGNAL WORK AREA SHALL BE INCLUDED IN THE RELATED PAY ITEM SUCH AS FOUNDATION, CONDUIT, HANDHOLE, TRENCH AND BACKFILL, ETC., AND NO EXTRA COMPENSATION SHALL BE ALLOWED. ALL ROADWAY SURFACES SUCH AS SHOULDERS, MEDIAN, SIDEWALKS, PAVEMENT ETC. SHALL BE REPLACED IN KIND. ALL DAMAGE TO MOWED LAWNS SHALL BE REPLACED WITH AN APPROVED SOD, AND ALL DAMAGE TO UNMOWED FIELDS SHALL BE SEED IN ACCORDANCE WITH STANDARD SPECIFICATIONS 252 AND 250 RESPECTIVELY.



GENERAL NOTES

- IT SHALL BE THE CONTRACTOR'S RESPONSIBILITY TO VERIFY ALL DIMENSIONS AND CONDITIONS EXISTING IN THE FIELD PRIOR TO ORDERING MATERIALS AND BEGINNING CONSTRUCTION. THIS SHALL INCLUDE LOCATING THE MAST ARM FOUNDATIONS AND VERIFYING THE MAST ARM LENGTHS.
- THE EXACT LOCATION OF ALL UTILITES SHALL BE FIELD VERIFIED BY THE CONTRACTOR BEFORE ORDERING ANY MATERIALS AND STARTING ANY WORK. FOR LOCATIONS OF UTILITIES, LOCALLY OWNED EQUIPMENT, LEASED ENFORCEMENT CAMERA SYSTEM FACILITIES AND IDOT UNDERGROUND FACILITIES, CONTACT THE LOCAL COUNTIES, MUNICIPALITIES AND IDOT FOR LOCATES. THE CONTRACTOR SHALL CALL "JULIE" AT (800) 892-0123 OR 811. IN THE CITY OF CHICAGO CONTACT DIGGER AT (312) 744-7000 FOR FIELD LOCATIONS OF BURIED UTILITIES (48 HOURS NOTIFICATION REQUIRED).
- THE CONTRACTOR SHALL CHECK THE PROPOSED TRAFFIC SIGNAL EQUIPMENT LOCATIONS FOR OVERHEAD UTILITY CONFLICTS. THE CONTRACTOR SHALL COORDINATE ANY CONFLICTS WITH THE UTILITY COMPANIES AND THE RESIDENT ENGINEER BEFORE ORDERING MATERIALS.
- THE CONTRACTOR SHALL COORDINATE CONSTRUCTION ACTIVITIES WITH UTILITY COMPANIES, LOCAL GOVERNMENT AGENCIES AND IDOT.
- CONTRACTOR SHALL MOUNT TRAFFIC SIGNAL HEADS TO THE RAILROAD CANTILEVER AS SHOWN ON THE "RAILROAD CANTILEVER SIGNAL HEAD MOUNTING" DETAIL ON SHEET TS-8.
- THE BOTTOM OF THE SIGNAL HOUSING (INCLUDING BRACKETS) OF A VEHICULAR SIGNAL FACE SHALL BE 4.5 FEET ABOVE THE MEDIAN ISLAND GRADE OF A CENTER MEDIAN ISLAND AND SHALL BE 8 FEET ABOVE THE PAVEMENT GRADE AT THE CENTER OF THE ROADWAY IF LOCATED ON THE SIDE OF THE ROAD.
- ALL STATIONS AND OFFSETS FROM IL RTE 31 SB ALIGNMENT UNLESS OTHERWISE NOTED.
- TEMPORARY TRAFFIC CONTROL AT THE RAILROAD CROSSING DURING CONSTRUCTION SHALL FOLLOW SECTION 8 OF THE MANUAL ON UNIFORM TRAFFIC CONTROL DEVICES AS FOLLOWS:

WHEN A GRADE CROSSING EXISTS EITHER WITHIN OR IN THE VICINITY OF A TEMPORARY TRAFFIC CONTROL ZONE, LANE RESTRICTIONS, FLAGGING (SEE CHAPTER 6E), OR OTHER OPERATIONS SHALL NOT BE PERFORMED IN A MANNER THAT WOULD CAUSE HIGHWAY VEHICLES TO STOP ON THE RAILROAD OR LRT TRACKS, UNLESS A FLAGGER OR UNIFORMED LAW ENFORCEMENT OFFICER IS PROVIDED AT THE GRADE CROSSING TO MINIMIZE THE POSSIBILITY OF HIGHWAY VEHICLES STOPPING ON THE TRACKS, EVEN IF AUTOMATIC WARNING DEVICES ARE IN PLACE.

LEFT ON GREEN ARROW ONLY

R10-5
 4 REQUIRED
 30"X36"
 SIGN PANEL TYPE 1

FILE NAME =	USER NAME = \$USER\$	DESIGNED - KMM	REVISED -	STATE OF ILLINOIS DEPARTMENT OF TRANSPORTATION	TRAFFIC SIGNAL MODERNIZATION PLAN (1 OF 2) U.S. ROUTE 30 WB RAMPS (RAMPS A&B /WATKINS ST. AT IL ROUTE 31	F.A. RTE.	SECTION	COUNTY	TOTAL SHEETS	SHEET NO.	
K:\Projects\090064\Design\Sheet Files\10154RWA\proWRI.dgn	PLOT SCALE = \$SCALE\$	CHECKED - JDH	REVISED -			349	(10 & 11 VB) R-3	KANE AND KENDALL	92	55	
PLOT DATE = 6/24/2013	DATE -	REVISED -	REVISED -			SCALE: SHEET NO. 1 OF 2 SHEETS STA. TO STA.		ILLINOIS FED. AID PROJECT		CONTRACT NO. 60V53	
TS-7											