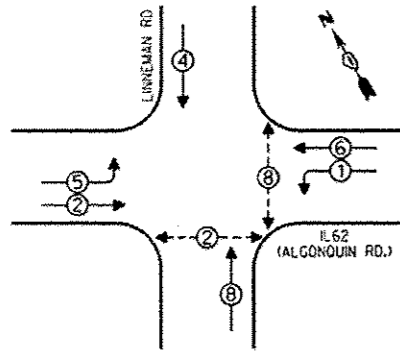


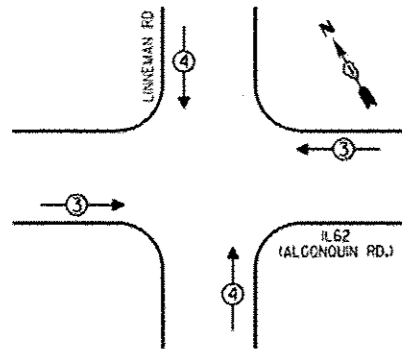
**CONTROLLER SEQUENCE**



- LEGEND**
- SINGLE ENTRY PHASE
  - DUAL ENTRY PHASE
  - ◇ OVERLAP
  - ⊕ PEDESTRIAN PHASE
  - NUMBER REFERS TO ASSOCIATED PHASE

**PHASE DESIGNATION DIAGRAM**

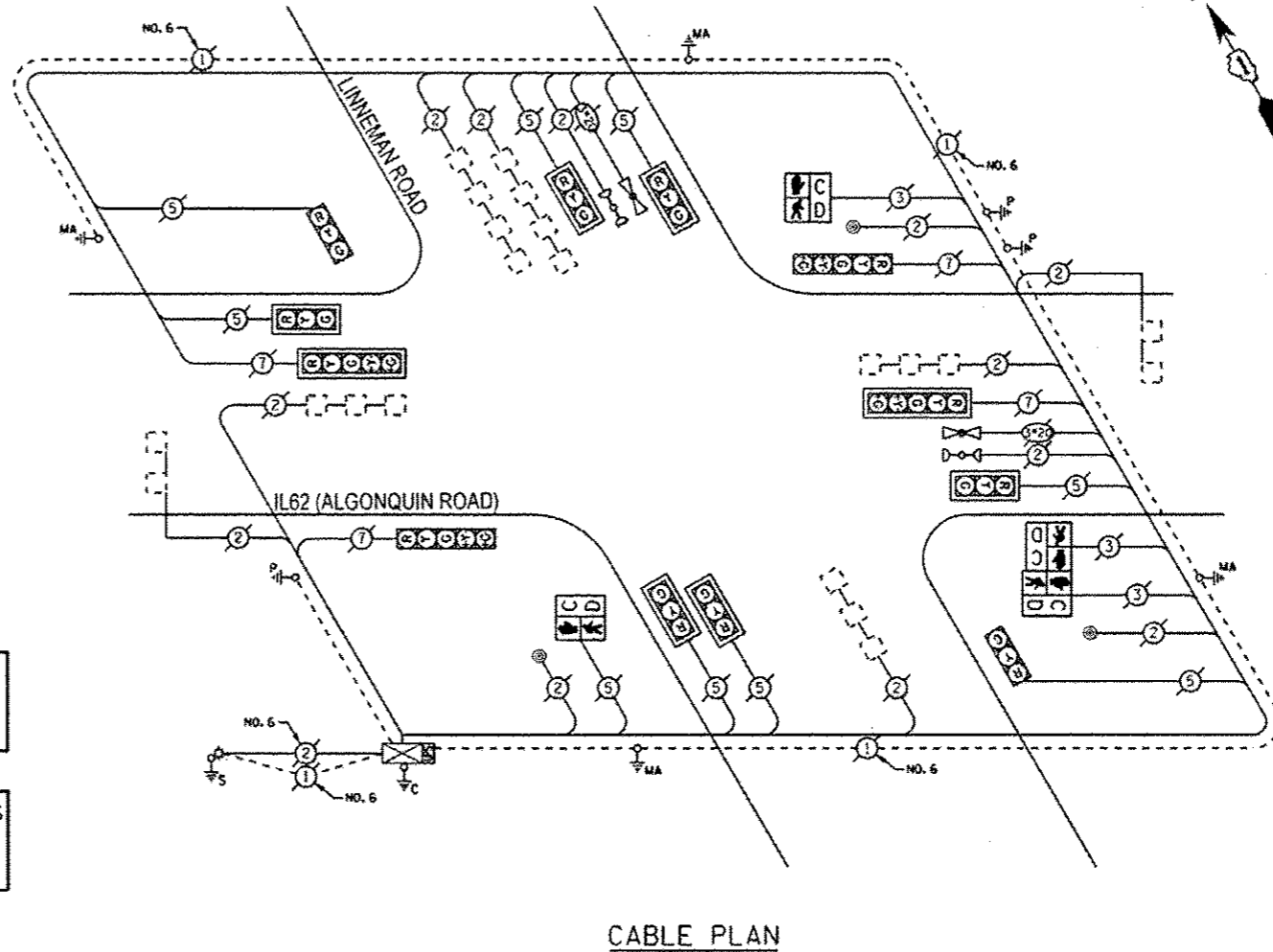
**EMERGENCY VEHICLE PREEMPTION SEQUENCE**



| EMERGENCY VEHICLE PREEMPTORS |       |
|------------------------------|-------|
| EMERGENCY VEHICLE PREEMPTOR  | 3 4   |
| MOVEMENT                     | ←→ ↑↓ |

THE TRAFFIC SIGNAL CONTROL EQUIPMENT FOR THIS PROJECT SHALL BE "ECONOLITE".

THE TRAFFIC SIGNAL HOUSINGS SHALL BE BLACK TO MATCH EXISTING EQUIPMENT.



**CABLE PLAN**

**REMOVE EXISTING TRAFFIC SIGNAL EQUIPMENT**

THE FOLLOWING ITEMS SHALL BE REMOVED BY THE CONTRACTOR AND SHALL BE DISPOSED OF BY THEM OUTSIDE THE RIGHT-OF-WAY AT THEIR EXPENSE. THE SALVAGE VALUE OF THE REMOVED EQUIPMENT SHALL BE REFLECTED IN THE CONTRACT BID PRICE.

| QUANTITY | UNIT | DESCRIPTION                    |
|----------|------|--------------------------------|
| 2        | EACH | PEDESTRIAN SIGNAL HEAD, 1-FACE |
| 1        | EACH | PEDESTRIAN SIGNAL HEAD, 2-FACE |
| 3        | EACH | PEDESTRIAN PUSHBUTTON          |

**SCHEDULE OF QUANTITIES**

| QUAN. | UNIT | ITEM  |
|-------|------|---|
| 1     | EACH | MAINTENANCE OF EXISTING TRAFFIC SIGNAL INSTALLATION                       |
| 2     | EACH | PEDESTRIAN SIGNAL HEAD, LED, 1-FACE, BRACKET MOUNTED WITH COUNTDOWN TIMER |
| 1     | EACH | PEDESTRIAN SIGNAL HEAD, LED, 2-FACE, BRACKET MOUNTED WITH COUNTDOWN TIMER |
| 3     | EACH | PEDESTRIAN PUSH-BUTTON  |
| 1     | EACH | REMOVE EXISTING TRAFFIC SIGNAL EQUIPMENT                                  |

| I.D.O.T. TRAFFIC SIGNAL INSTALLATION ELECTRICAL SERVICE REQUIREMENTS |                       |     |              |       | TOTAL WATTAGE |
|--|-----------------------|-----|--------------|-------|---------------|
| TYPE   | NO. OF LAMPS (INCAND) | LED | % OPERATIONS |       |               |
| SIGNAL (RED)   | 12                    | 17  | 0.50         |       | 102.00        |
| (YELLOW)   | 12                    | 25  | 0.25         |       | 75.00         |
| (GREEN)  | 12                    | 15  | 0.25         |       | 45.00         |
| ARROW  | 8                     | 12  | 0.10         |       | 9.60          |
| PED. SIGNAL CONTROLLER   | 4                     | 25  | 1.00         |       | 100.00        |
| ILLUM. SIGN LUMINAIRE  |                       | 25  | 0.05         |       |               |
| VIDEO SYSTEM   |                       | 250 | 0.50         |       |               |
|  |                       | 150 | 1.00         |       |               |
| FLASHER  |                       |     | 0.50         |       |               |
| ENERGY COSTS TO:   |                       |     |              | TOTAL | 431.60        |

VILLAGE OF MOUNT PROSPECT  
50 SOUTH EMERSON STREET  
MOUNT PROSPECT, ILLINOIS 60056

ENERGY SUPPLY - CONTACT: DAVE SCHACHT  
PHONE: (630) 437-2129  
COMPANY: COMED

|              |            |          |         |  |  |  |  |                           |            |        |              |           |
|--------------|------------|----------|---------|--|--|--|--|---------------------------|------------|--------|--------------|-----------|
| FILE NAME    | USER NAME  | DESIGNED | REVISED | STATE OF ILLINOIS DEPARTMENT OF TRANSPORTATION |  | SCHEDULE OF QUANTITIES, CABLE PLAN, PHASE DESIGNATION DIAGRAM, AND EMERGENCY VEHICLE PREEMPTION SEQUENCE, IL62 (ALGONQUIN ROAD) AT LINNEMAN ROAD |  | F.A. R.T.E.               | SECTION    | COUNTY | TOTAL SHEETS | SHEET NO. |
| #FILE#       | #USER#     | DRAWN    | REVISED |  |  |  |  | VAR.                      | 2013-005-1 | COOK   | 95           | 85N       |
| #MODEL NAME# | PLOT SCALE | CHECKED  | REVISED |  |  |  |  | CONTRACT NO. 60W23        |            |        |              |           |
|              | PLOT DATE  | DATE     | REVISED |  |  |  |  | ILLINOIS FED. AID PROJECT |            |        |              |           |