

F.A.U. RTE.	SECTION	COUNTY	TOTAL SHEETS	SHEET NO.
VAR	2013-005-1	COOK	25	1
ILLINOIS			CONTRACT NO. 60W23	

INDEX OF SHEETS
SEE SHEET NO. 2

STATE OF ILLINOIS
DEPARTMENT OF TRANSPORTATION
DIVISION OF HIGHWAYS

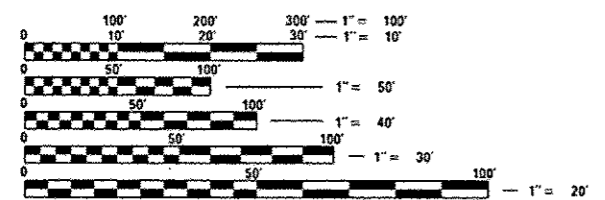
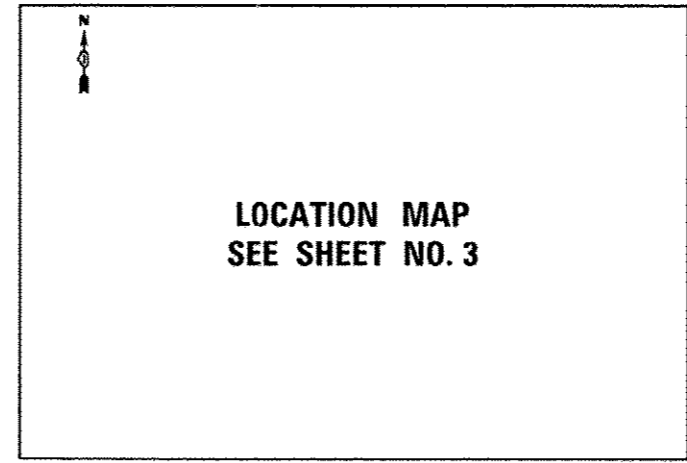
**PROPOSED
HIGHWAY PLANS**

VARIOUS LOCATIONS IN
NORTHWEST COOK COUNTY, *CONTRACT #1*
LIGHT EMITTING DIODE (LED) INSTALLATION
SECTION 2013-005-1
COOK COUNTY
C-91-218-13



IDOT STANDARDS

- 701006-04 OFF-ROAD OPERATIONS, 2L, 2W, 15' TO 24" FROM PAVEMENT EDGE
- 701011-03 OFF-ROAD OPERATIONS, MULTILANE, 15' TO 24" FROM PAVEMENT EDGE
- 701701-08 URBAN LANE CLOSURE, MULTILANE INTERSECTION
- 701901-02 TRAFFIC CONTROL DEVICES
- 720001-01 SIGN PANEL MOUNTING DETAILS
- 857001-01 STANDARD PHASE DESIGNATION DIAGRAMS AND PHASE SEQUENCES
- 862001-01 UNINTERRUPTABLE POWER SUPPLY (UPS)
- 880006-01 TRAFFIC SIGNAL MOUNTING DETAILS



FULL SIZE PLANS HAVE BEEN PREPARED USING STANDARD ENGINEERING SCALES. REDUCED SIZED PLANS WILL NOT CONFORM TO STANDARD SCALES. IN MAKING MEASUREMENTS ON REDUCED PLANS, THE ABOVE SCALES MAY BE USED.

J.U.L.I.E.
JOINT UTILITY LOCATION INFORMATION FOR EXCAVATION
1-800-892-0123
OR 811

PROJECT ENGINEER: SHAR-DAY SMITH
PROJECT MANAGER: SUDUD MAHMOUD

CONTRACT NO. 60W23



Signed Jeffrey A. Meindl
JEFFREY A. MEINDL, P.E., IL License No. 062-054021
Expires 11/30/2013
Date 5-15-13

STATE OF ILLINOIS
DEPARTMENT OF TRANSPORTATION
DIVISION OF HIGHWAYS

SUBMITTED May 17 2013
John J. Fritzman
DEPUTY DIRECTOR OF HIGHWAYS, REGION ENGINEER

June 28 2013
John D. Baranzelli, P.E.
ENGINEER OF DESIGN AND ENVIRONMENT

June 28 2013
Omer Osman, P.E.
DIRECTOR OF HIGHWAYS, CHIEF ENGINEER

PRINTED BY THE AUTHORITY
OF THE STATE OF ILLINOIS