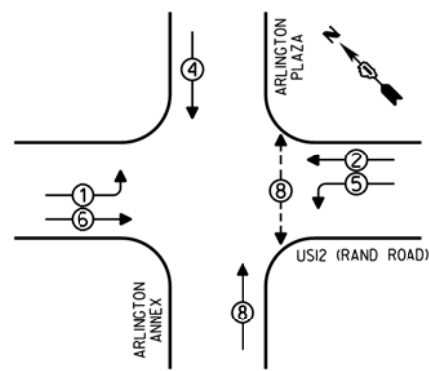


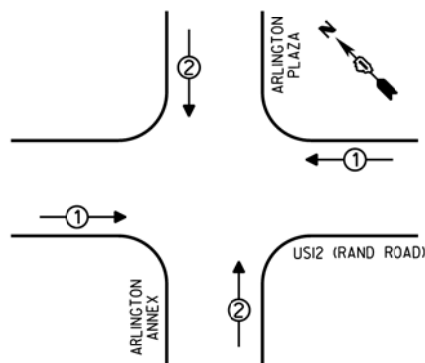
CONTROLLER SEQUENCE



- LEGEND**
- SINGLE ENTRY PHASE
  - DUAL ENTRY PHASE
  - ⊕ OVERLAP
  - ⊙ PEDESTRIAN PHASE
  - NUMBER REFERS TO ASSOCIATED PHASE

PHASE DESIGNATION DIAGRAM

EMERGENCY VEHICLE PREEMPTION SEQUENCE

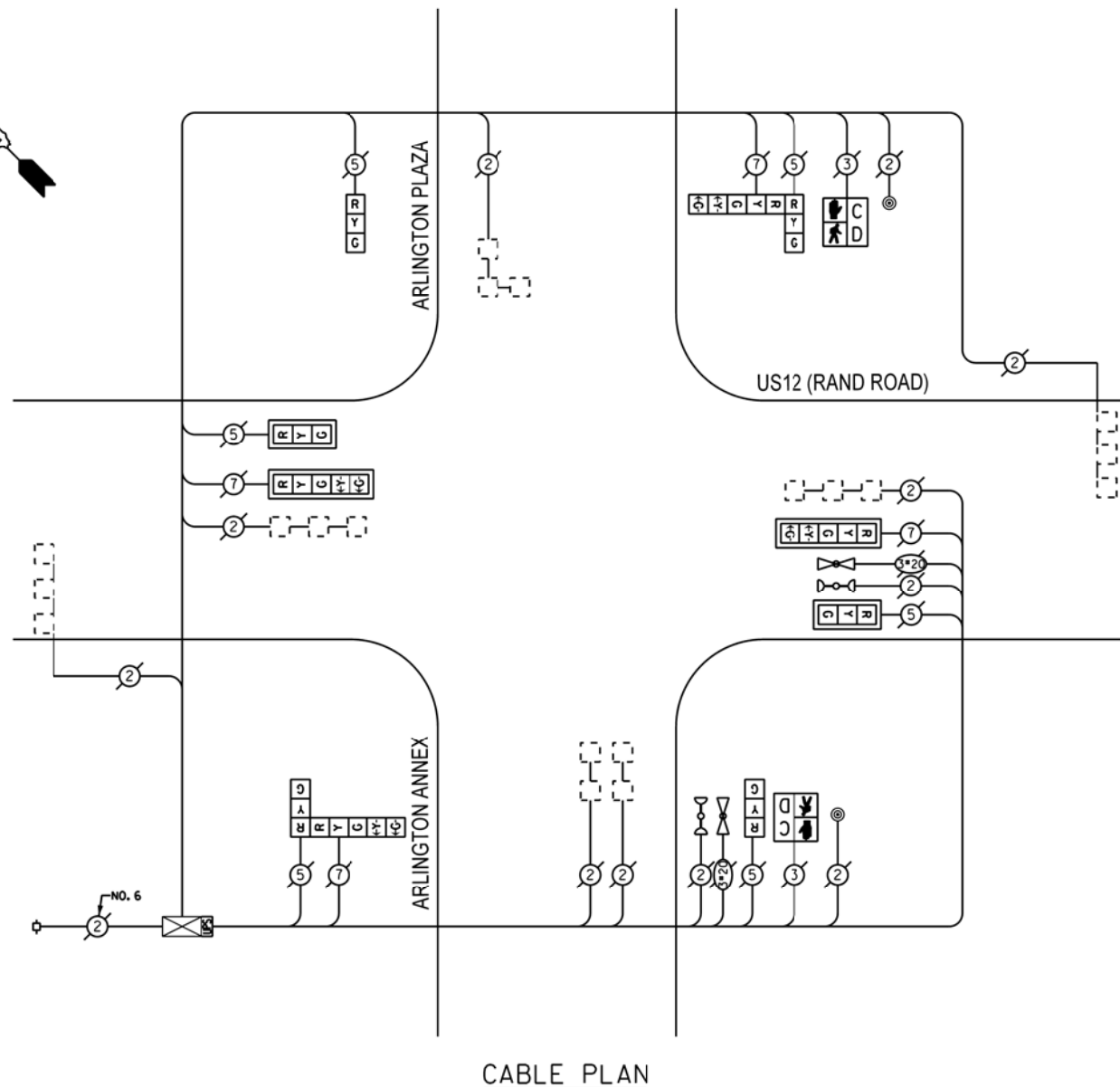


| EMERGENCY VEHICLE PREEMPTORS |   |   |
|------------------------------|---|---|
| EMERGENCY VEHICLE PREEMPTOR  | 1 | 2 |
| MOVEMENT                     | ↔ | ↕ |

REPLACE ALL EXISTING TRAFFIC SIGNAL HEADS

REPLACE ALL EXISTING PAINTED YELLOW TRAFFIC SIGNAL POSTS ON EXISTING FOUNDATIONS

THE TRAFFIC SIGNAL CONTROL EQUIPMENT FOR THIS PROJECT SHALL BE "ECONOLITE".



CABLE PLAN

| I.D.O.T. TRAFFIC SIGNAL INSTALLATION ELECTRICAL SERVICE REQUIREMENTS |              |        |     |              | TOTAL WATTAGE  |
|--|--------------|--------|-----|--------------|----------------|
| TYPE   | NO. OF LAMPS | INCAND | LED | % OPERATIONS |                |
| SIGNAL (RED)   | 10           |        | 17  | 0.50         | 85.00          |
| (YELLOW)   | 10           |        | 25  | 0.25         | 62.50          |
| (GREEN)  | 10           |        | 15  | 0.25         | 37.50          |
| ARROW  | 8            |        | 12  | 0.10         | 9.60           |
| PED. SIGNAL  | 2            |        | 25  | 1.00         | 50.00          |
| CONTROLLER   | 1            |        | 100 | 1.00         | 100.00         |
| ILLUM. SIGN  |              |        | 25  | 0.05         |                |
| LUMINAIRE  |              | 250    |     | 0.50         |                |
| VIDEO SYSTEM   |              | 150    |     | 1.00         |                |
| FLASHER  |              |        |     | 0.50         |                |
| ENERGY COSTS TO:   |              |        |     |              | TOTAL = 344.60 |

VILLAGE OF ARLINGTON HEIGHTS  
33 SOUTH ARLINGTON HEIGHTS ROAD  
ARLINGTON HEIGHTS, ILLINOIS 60005

ENERGY SUPPLY - CONTACT: DAVE SCHACHT  
PHONE: (630) 437-2129  
COMPANY: COMED

REMOVE EXISTING TRAFFIC SIGNAL EQUIPMENT

THE FOLLOWING ITEMS SHALL BE REMOVED BY THE CONTRACTOR AND SHALL BE DISPOSED OF BY THEM OUTSIDE THE RIGHT-OF-WAY AT THEIR EXPENSE. THE SALVAGE VALUE OF THE REMOVED EQUIPMENT SHALL BE REFLECTED IN THE CONTRACT BID PRICE.

| QUANTITY | UNIT | DESCRIPTION                                   |
|----------|------|---|
| 3        | EACH | TRAFFIC SIGNAL POST                           |
| 4        | EACH | SIGNAL HEAD, 1-FACE, 3-SECTION                |
| 2        | EACH | SIGNAL HEAD, 1-FACE, 5-SECTION                |
| 2        | EACH | SIGNAL HEAD, 2-FACE, 1-3 SECTION, 1-5 SECTION |
| 2        | EACH | PEDESTRIAN SIGNAL HEAD, 1-FACE                |
| 2        | EACH | PEDESTRIAN PUSHBUTTON                         |

SCHEDULE OF QUANTITIES

| QUAN. | UNIT | ITEM  |
|-------|------|---|
| 1     | EACH | MAINTENANCE OF EXISTING TRAFFIC SIGNAL INSTALLATION                       |
| 1     | EACH | TRAFFIC SIGNAL POST, GALVANIZED STEEL 14 FT.                              |
| 2     | EACH | TRAFFIC SIGNAL POST, GALVANIZED STEEL 16 FT.                              |
| 2     | EACH | SIGNAL HEAD, LED, 1-FACE, 3-SECTION, MAST ARM MOUNTED                     |
| 2     | EACH | SIGNAL HEAD, LED, 1-FACE, 3-SECTION, BRACKET MOUNTED                      |
| 2     | EACH | SIGNAL HEAD, LED, 1-FACE, 5-SECTION, MAST ARM MOUNTED                     |
| 2     | EACH | SIGNAL HEAD, LED, 2-FACE, 1-3 SECTION, 1-5 SECTION, BRACKET MOUNTED       |
| 2     | EACH | PEDESTRIAN SIGNAL HEAD, LED, 1-FACE, BRACKET MOUNTED WITH COUNTDOWN TIMER |
| 4     | EACH | TRAFFIC SIGNAL BACKPLATE  |
| 2     | EACH | PEDESTRIAN PUSH-BUTTON  |
| 1     | EACH | MODIFY EXISTING CONTROLLER CABINET  |
| 1     | EACH | REMOVE EXISTING TRAFFIC SIGNAL EQUIPMENT                                  |
| 1     | EACH | UNINTERRUPTIBLE POWER SUPPLY, SPECIAL                                     |

|             |                      |            |           |
|-------------|----------------------|------------|-----------|
| FILE NAME = | USER NAME = #USER#   | DESIGNED - | REVISED - |
| #FILE#      |                      | DRAWN -    | REVISED - |
|             | PLOT SCALE = #SCALE# | CHECKED -  | REVISED - |
| #MODELNAME# | PLOT DATE = #DATE#   | DATE -     | REVISED - |

STATE OF ILLINOIS  
DEPARTMENT OF TRANSPORTATION

SCHEDULE OF QUANTITIES, CABLE PLAN, PHASE DESIGNATION  
DIAGRAM, AND EMERGENCY VEHICLE PREEMPTION SEQUENCE,  
US12 (RAND ROAD) AT ARLINGTON ANNEX

SCALE: NONE SHEET OF SHEETS STA. TO STA.

|                           |            |        |                    |           |
|---------------------------|------------|--------|--------------------|-----------|
| F.A. RTE.                 | SECTION    | COUNTY | TOTAL SHEETS       | SHEET NO. |
| VAR                       | 2013-005-1 | COOK   | 85                 | 38        |
|                           |            |        | CONTRACT NO. 60W23 |           |
| ILLINOIS FED. AID PROJECT |            |        |                    |           |