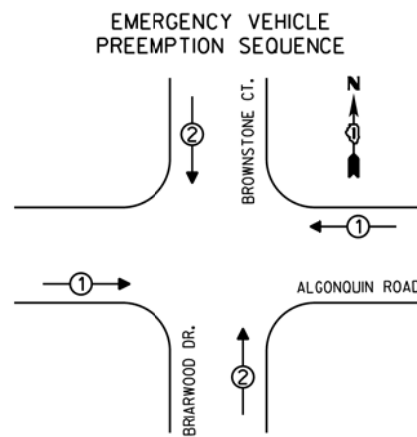


PHASE DESIGNATION DIAGRAM



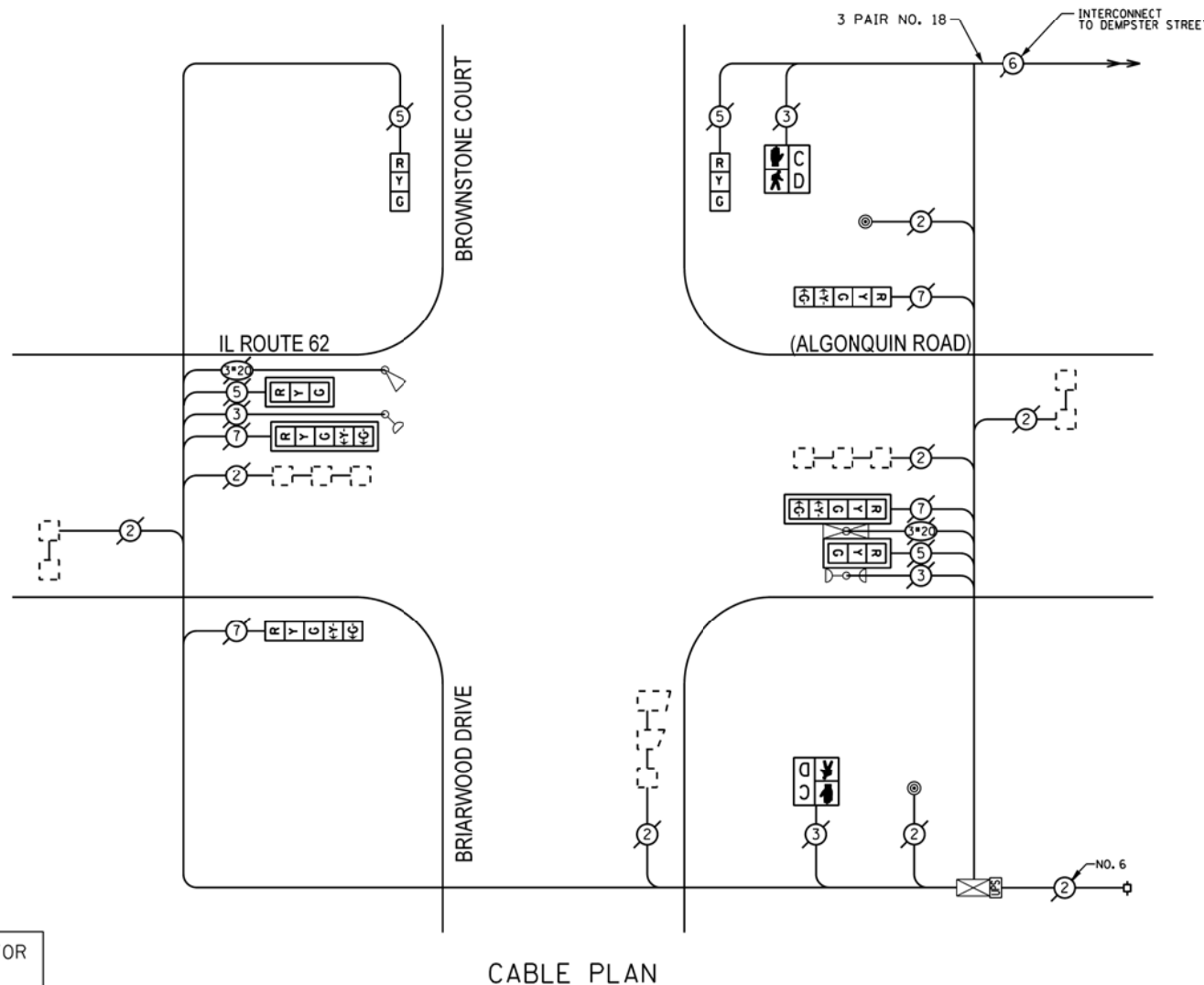
| EMERGENCY VEHICLE PREEMPTORS | | |
|------------------------------|---|---|
| EMERGENCY VEHICLE PREEMPTOR | 1 | 2 |
| MOVEMENT | ↔ | ↕ |

LEGEND

- VEHICLE MOVEMENT
- ⊙ PEDESTRIAN PHASE
- * NUMBER REFERS TO ASSOCIATED PHASE

RETROFIT ALL EXISTING TRAFFIC SIGNAL HEADS

THE TRAFFIC SIGNAL CONTROL EQUIPMENT FOR THIS SIGNAL SHALL BE "ECONOLITE" TO MATCH THE EXISTING ADJACENT SYSTEM.



REMOVE EXISTING TRAFFIC SIGNAL EQUIPMENT

THE FOLLOWING ITEMS SHALL BE REMOVED BY THE CONTRACTOR AND SHALL BE DISPOSED OF BY THEM OUTSIDE THE RIGHT-OF-WAY AT THEIR EXPENSE. THE SALVAGE VALUE OF THE REMOVED EQUIPMENT SHALL BE REFLECTED IN THE CONTRACT BID PRICE.

| QUANTITY | UNIT | DESCRIPTION |
|----------|------|--------------------------------|
| 2 | EACH | PEDESTRIAN SIGNAL HEAD, 1-FACE |
| 2 | EACH | PEDESTRIAN PUSHBUTTON |

SCHEDULE OF QUANTITIES

| QUAN. | UNIT | ITEM |
|-------|------|---|
| 1 | EACH | MAINTENANCE OF EXISTING TRAFFIC SIGNAL INSTALLATION |
| 1 | EACH | UNINTERRUPTIBLE POWER SUPPLY, SPECIAL |
| 1 | EACH | SIGNAL HEAD, LED, 1-FACE, 3-SECTION, BRACKET MOUNTED, RETROFIT |
| 1 | EACH | SIGNAL HEAD, LED, 1-FACE, 5-SECTION, BRACKET MOUNTED, RETROFIT |
| 2 | EACH | SIGNAL HEAD, LED, 1-FACE, 5-SECTION, MAST ARM MOUNTED, RETROFIT |
| 2 | EACH | SIGNAL HEAD, LED, 1-FACE, 3-SECTION, MAST ARM MOUNTED, RETROFIT |
| 1 | EACH | SIGNAL HEAD, LED, 2-FACE, 1-3 SECTION, 1-5 SECTION, BRACKET MOUNTED, RETROFIT |
| 2 | EACH | PEDESTRIAN SIGNAL HEAD, LED, 1-FACE, BRACKET MOUNTED WITH COUNTDOWN TIMER |
| 2 | EACH | PEDESTRIAN PUSH-BUTTON |
| 1 | EACH | MODIFY EXISTING CONTROLLER CABINET |
| 1 | EACH | REMOVE EXISTING TRAFFIC SIGNAL EQUIPMENT |

| I.D.O.T. TRAFFIC SIGNAL INSTALLATION ELECTRICAL SERVICE REQUIREMENTS | | | | | |
|--|--------------|--------|------------------|---------------|--------|
| TYPE | NO. OF LAMPS | INCAND | LED % OPERATIONS | TOTAL WATTAGE | |
| SIGNAL (RED) | 8 | | 17 | 0.50 | 68.0 |
| (YELLOW) | 8 | | 25 | 0.25 | 50.0 |
| (GREEN) | 8 | | 15 | 0.25 | 30.0 |
| ARROW | 8 | | 12 | 0.10 | 9.6 |
| PED. SIGNAL | 2 | | 25 | 1.00 | 50 |
| CONTROLLER | 1 | | 100 | 1.00 | 100.00 |
| ENERGY COSTS TO: | | | | TOTAL | 307.6 |

VILLAGE OF ARLINGTON HEIGHTS
33 SOUTH ARLINGTON HEIGHTS ROAD
ARLINGTON HEIGHTS, ILLINOIS 60005

ENERGY SUPPLY - CONTACT: DAVE SCHACHT
PHONE: (630) 437-2129
COMPANY: COMED

FILE NAME: #FILE#
USER NAME: #USER#

2600 Warrenville Road, Suite 203, Downers Grove, IL 60515-1761
630.705.0110 voice, 630.839.2566 fax
www.mps-il.com

MILLENNIA PROFESSIONAL SERVICES

| | |
|----------------|-----------|
| DESIGNED - JNP | REVISED - |
| DRAWN - JNP | REVISED - |
| CHECKED - TVN | REVISED - |
| DATE - #DATE# | REVISED - |

STATE OF ILLINOIS
DEPARTMENT OF TRANSPORTATION

SCHEDULE OF QUANTITIES, CABLE PLAN, PHASE DESIGNATION DIAGRAM,
AND EMERGENCY VEHICLE PREEMPTION SEQUENCE
ALGONQUIN ROAD AT BRIARWOOD DRIVE

SCALE: SHEET NO. OF SHEETS STA. TO STA.

| F.A.P. RTE. | SECTION | COUNTY | TOTAL SHEETS | SHEET NO. |
|---|------------|--------|--------------|-----------|
| VAR | 2013-005-1 | COOK | 85 | 60 |
| CONTRACT NO. 60W23 | | | | |
| FED. ROAD DIST. NO. 1 [ILLINOIS] FED. AID PROJECT | | | | |

TS-21355

#FILE#