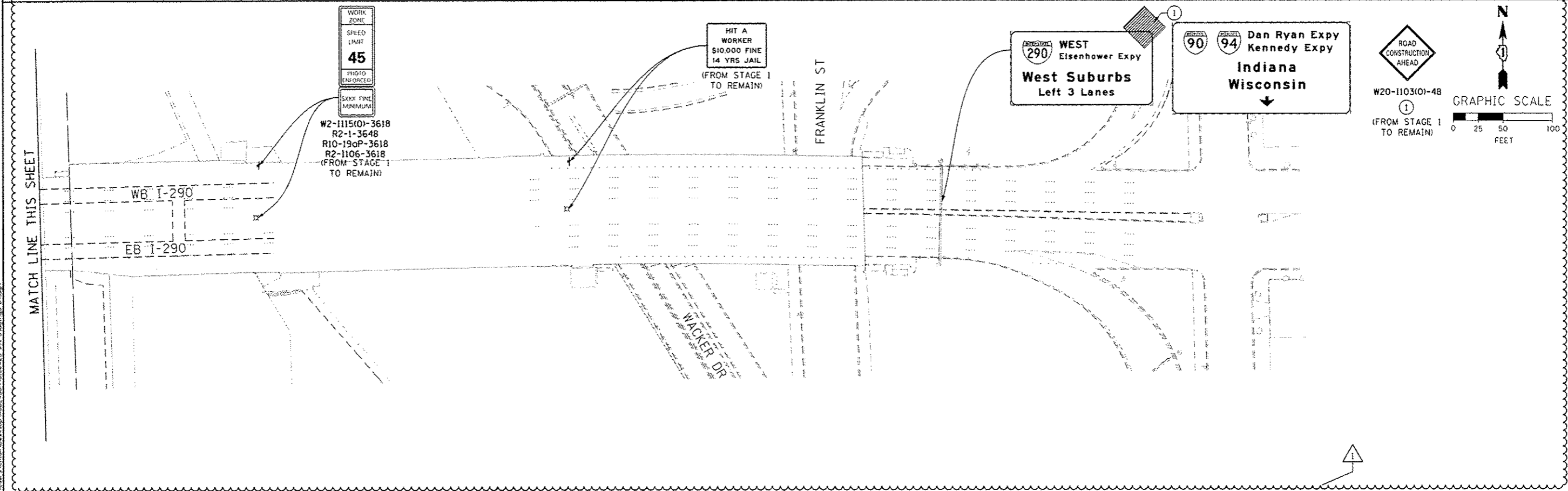
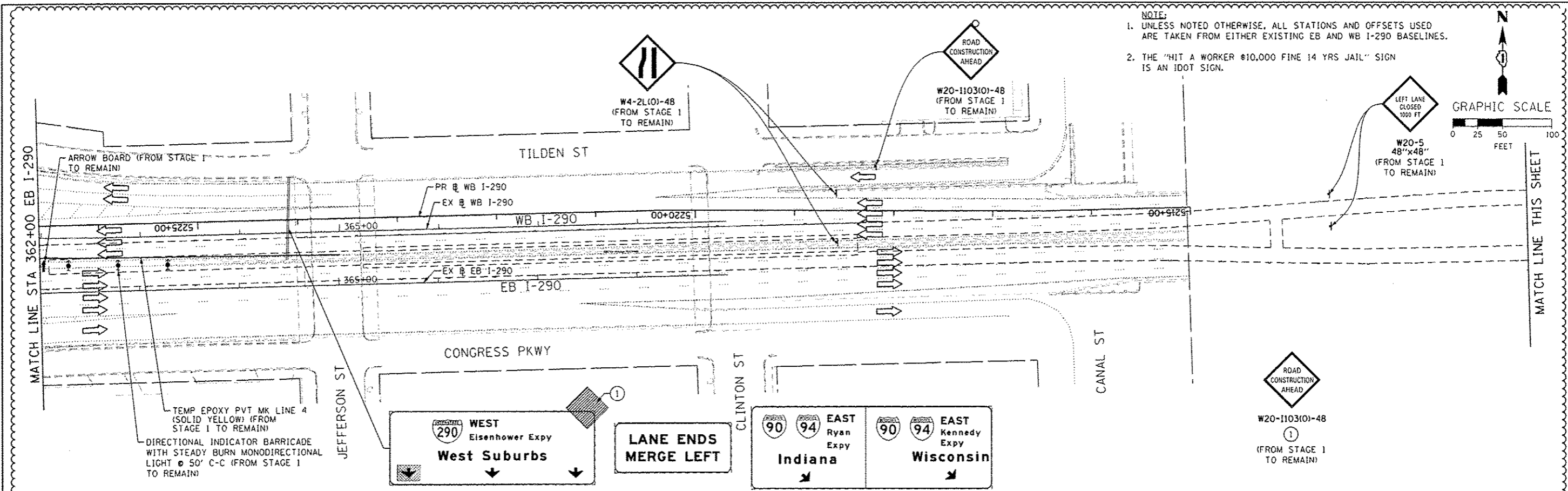


NOTE:
 1. UNLESS NOTED OTHERWISE, ALL STATIONS AND OFFSETS USED ARE TAKEN FROM EITHER EXISTING EB AND WB I-290 BASELINES.
 2. THE "HIT A WORKER \$10,000 FINE 14 YRS JAIL" SIGN IS AN IDOT SIGN.



DESIGNED - OPS	REVISED - 7/19/2013
DRAWN - PHP	REVISED -
CHECKED - DBM	REVISED -
DATE - 5/14/2013	REVISED -

STATE OF ILLINOIS
 DEPARTMENT OF TRANSPORTATION

SUGGESTED STAGES OF CONSTRUCTION AND TRAFFIC CONTROL
 STAGE 3

SCALE: 1" = 50' SHEET 4 OF 7 SHEETS STA. TO STA.

F.A.I. RTE.	SECTION	COUNTY	TOTAL SHEETS	SHEET NO.
90/94/290	2013-007R	COOK	317	73
CONTRACT NO. 60W25				
ILLINOIS FED. AID PROJECT				

FILE PATH: C:\Users\Chuan\Desktop\I290\I290-1103-48\I290-1103-48.dgn