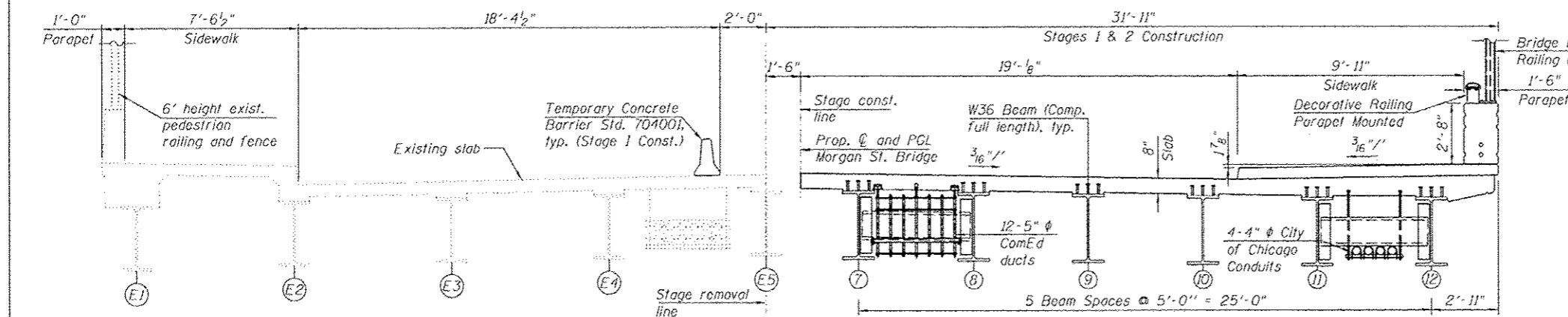


**STAGES 1 & 2 REMOVAL**  
(Looking Up-station)



**STAGES 1 & 2 CONSTRUCTION**  
(Looking Up-station)

**STAGE 2 REMOVAL:**

- idot Contractor to:
1. Remove east half of existing bridge Piers 1 and 2 within limits of Stage 2 Removal. See limits of Pier 1 footing removal on Sheet S1-07.

**STAGE 2 CONSTRUCTION:**

- The following construction items will be performed within the limits of Stage 2 Construction:
- ComEd Contractor to:
1. Manipulate the conduits/cables to allow for the Piers 1 and 2 drilled shafts drilling.

- idot Contractor to:
1. Drill and pour drilled shafts for Piers 1 and 2 within limits of Stage 2 Construction as shown in footing layout.
  2. Construct Piers 1 and 2 within limits of Stage 2 Construction.
  3. Erect Beams 7 thru 12 and related steel diaphragms.

- ComEd Contractor to:
1. Support east box of ducts on wood lagging per IDOT Specifications (Protective Shield) between new steel W36 bridge beams and protect top of wood box from deck placement with wood lagging per IDOT Specifications (Protective Shield).

- idot Contractor to:
1. Remove Temporary ComEd Support Beam installed in Stage 1 Construction.

2. Install deck forms and reinforcement and place inserts (hangers) in deck for utility support.

3. Construct reinforced concrete deck with sidewalk, parapet, light poles, decorative railing parapet mounted and bridge fence railing.

4. Install City of Chicago conduits.

5. Perform bridge deck grooving for the bridge deck.

6. Apply protective coat for the bridge deck and top and inside faces of sidewalk and parapets.

7. Install proposed overhead bridge mounted sign on Morgan Street Bridge over WB I-290.

8. Construct the east half of the North and South bridge approach pavement within limits of Stage 2 Construction.

- ComEd Contractor to:
1. Place new ducts on conduits and support ducts with IDOT/ComEd approved duct support system from deck inserts.

- Before IDOT construction commences:
- ComEd Contractor to:
- i. Remove existing duct support system from existing bridge deck.
  - ii. Remove existing asbestos insulation (including asbestos from City of Chicago facilities on bridge and approaches)
  - iii. Remove existing conduits and enclose existing cables in wooden box.
  - iv. Support box of ducts on wood lagging per IDOT Specifications (Protective Shield) between existing steel W33 bridge beams.

**STAGE 1 REMOVAL:**

- idot Contractor to:
1. Install temporary concrete barrier as shown to locate construction work area on the east side of the existing structure.
  2. Provide sidewalk closures at both North and South sides of the Morgan Street Bridge.
  3. Provide barricades and advance street level signs on sidewalks for the closure of the Morgan Street CTA station.
  4. Remove existing bridge approach slab, approach bent caps, approach pavement and sidewalks within limits of Stage 1 Removal.
  5. Remove/relocate existing utilities interfering with the braced excavation and new abutments and wingwalls construction. See Roadway Plans for details.
  6. Install Braced Excavation Systems for the existing water main, riser shaft and portion of Panel 1 of Retaining Wall 5 removal and for the reconstruction of the new water main, riser shaft and portion of Panel 1 of Retaining Wall 5.
  7. Install Braced Excavation Systems for the construction of the abutments, wingwalls and portion of Panel 1 of Retaining Wall 5 outside riser shaft braced excavation.

**STAGE 1 REMOVAL CONTINUED:**

- idot Contractor to:
8. Remove existing water main, riser shaft and panel 1 of Retaining Wall 5.
  9. Remove existing east half of concrete bridge deck within limits of Stage 1 Removal.
  10. Remove the backwalls of the existing South and North Abutments within limits of Stage 1 Removal. Existing abutment stem to remain in place and to be removed in Stage 4 Removal.
  11. Install temporary Shoring Tower and east W36 temporary Support Beams per HBK plans. ComEd Contractor provides and installs W24 temporary support beams and all wooden box supports of ducts and associated cables on W36 support beam to be furnished by ComEd and installed by IDOT Contractor.
  12. Remove existing W33 steel beams E6 thru E10 and diaphragms after ComEd ties up the ducts to the steel support beams per HBK plans.

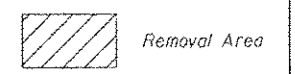
**STAGE 1 CONSTRUCTION:**

- The following construction items will be performed within the limits of Stage 1 Construction:
- ComEd Contractor to:
1. Manipulate the conduits/cables to allow for the North and South Abutments drilled shafts drilling.
  2. Tie up ComEd ducts in approach area and on east side of bridge with steel support beam per HBK plans.
- idot Contractor to:
1. Drill and pour drilled shafts for abutments and approach bents as shown in footing layout.
  2. Drill and pour drilled shafts approach bents within limits of Stage 1 Construction as shown in footing layout.
  3. Construct abutments and wingwalls.
  4. Construct approach bents within limits of Stage 1 Construction.
  5. Construct new water main connection pipes and riser shaft.
  6. Construct Panel 1 of Retaining Wall 5 (SN 016-1724) as shown in Sheets S2-01 thru S2-12.
  7. Backfill the remaining braced excavation for the abutments, wingwalls, riser shaft and retaining wall.

**NOTE:**

1. For Notes, See Sheet S1-04A.

**LEGEND**



FILE PATH: C:\Users\m1\OneDrive\Documents\Drawings\Perms For The Day\016-1724-S04A-SUGCONET.DWG

<b>HBM</b> ENGINEERING GROUP, LLC CONSULTING & DESIGN INSPECTION & TESTING RESEARCH & TESTING 4415 WEST HARRISON ST. SUITE 231 HILLSIDE, IL 60162 PHONE: (708) 236-0900 FAX: (708) 236-0901	0161709-60W25-S04A-SUGCONET.DWG USER NAME: wj11mrdwasa PLOT SCALE: 3/8"=1'-0" PLOT DATE: 7/15/2013	DESIGNED - MI, WM DRAWN - WM CHECKED - MAJ, MI DATE - 6/17/2013	REVISED - 07/19/2013 MI, MAJ REVISED - REVISED - REVISED -	<b>STATE OF ILLINOIS</b> <b>DEPARTMENT OF TRANSPORTATION</b>	<b>STAGES 1 AND 2 CONSTRUCTION</b> <b>STRUCTURE NO. 016-1709</b>			F.A.I. R.T.E. 90/94/290	SECTION 2013-00TR	COUNTY COOK	TOTAL SHEETS 317	SHEET NO. 148
	SCALE: SHEET S1-04 OF 51 SHEETS STA. TO STA.				CONTRACT NO. 60W25			ILLINOIS FED. AID PROJECT				

Entire sheet revised