
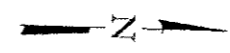
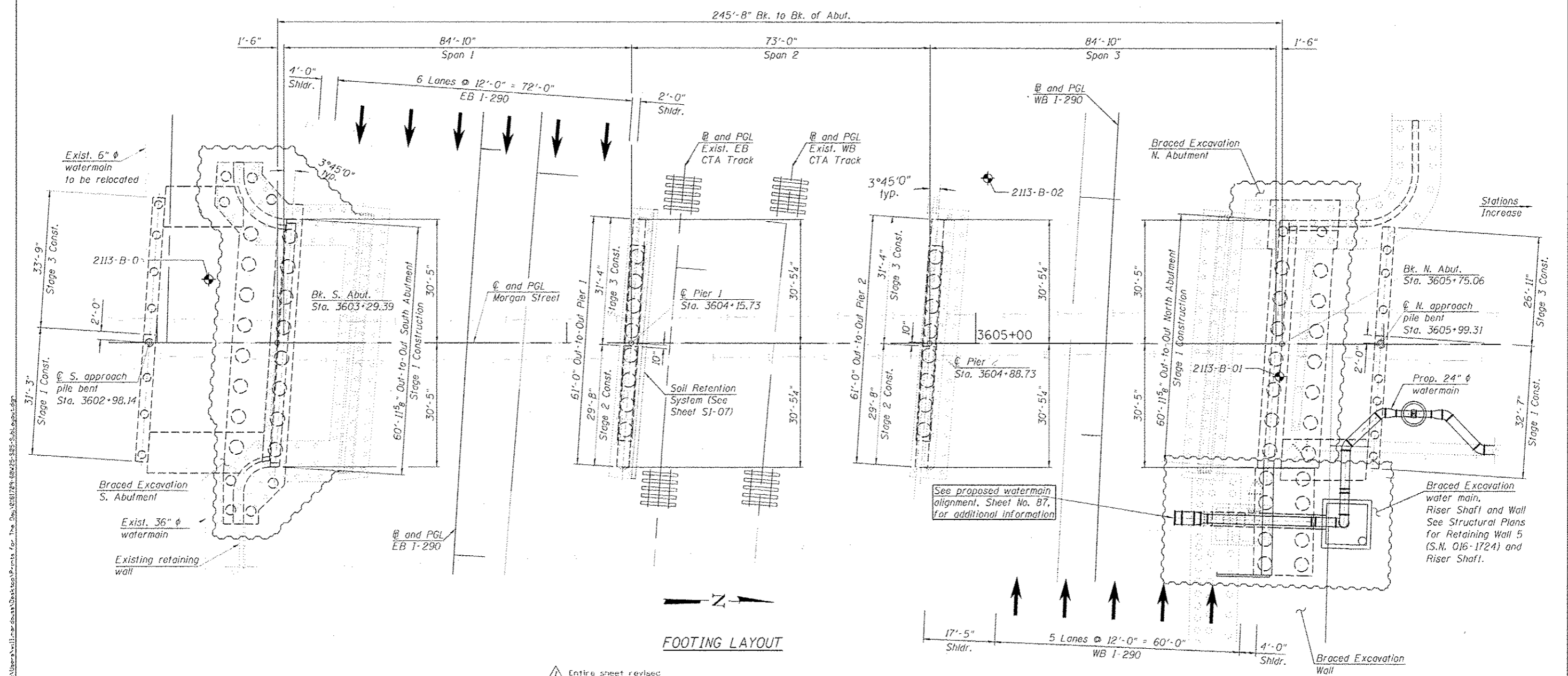


- NOTES:**
1. The north and south abutments shall not be staged.
 2. The piers and approach bents shall be staged.

LEGEND:

Soil Boring 



FOOTING LAYOUT

FILE PATH: C:\Users\m11\OneDrive\Desktop\Prints for The Dept\1709-50W20-585-Sub\Sub\1709-50W20-585-Sub.dwg

HBM ENGINEERING GROUP, LLC CONSULTING & DESIGN CORPORATION & TESTING RESEARCH & TESTING 4415 WEST HARRISON ST. SUITE 231 HILLSDALE, IL 60162 PH: (708) 236-0900 FAX: (708) 236-0901	1709-50W20-585-Sub/Layout.dwg USER NAME = m11.mardians PLOT SCALE = 1/2" = 1' / in. PLOT DATE = 7/15/2013	DESIGNED - ML, JJS DRAWN - JJS, WM CHECKED - MAL, ML, MAF DATE - 6/17/2013	REVISIONS 07/17/2013 ML, MAF REVISIONS REVISIONS REVISIONS REVISIONS	STATE OF ILLINOIS DEPARTMENT OF TRANSPORTATION	SUBSTRUCTURE LAYOUT STRUCTURE NO. 016-1709	F.A.I. RTE. 90/94/290 SECTION 2013-00TR COUNTY COOK TOTAL SHEETS 317 SHEET NO. 149 CONTRACT NO. 60W25	SCALE: SHEET 51-05 OF 51 SHEETS STA. TO STA.	ILLINOIS FEB. AID PROJECT
	Entire sheet revised							
	Braced Excavation S. Abutment Braced Excavation N. Abutment Braced Excavation water main, Riser Shaft and Wall See Structural Plans for Retaining Wall 5 (S.N. 016-1724) and Riser Shaft.							
	See proposed watermain alignment, Sheet No. 87, for additional information							
	Stations Increase							