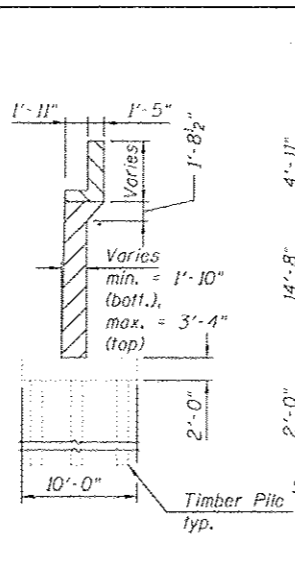
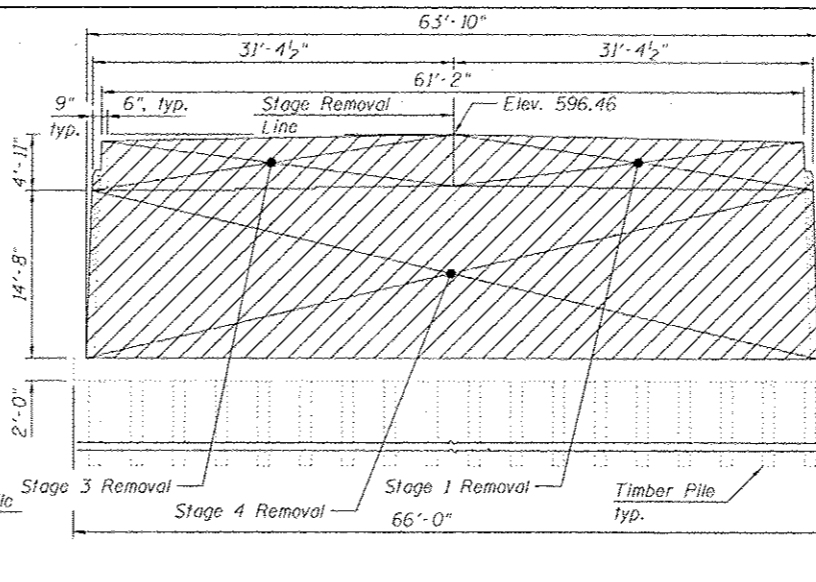


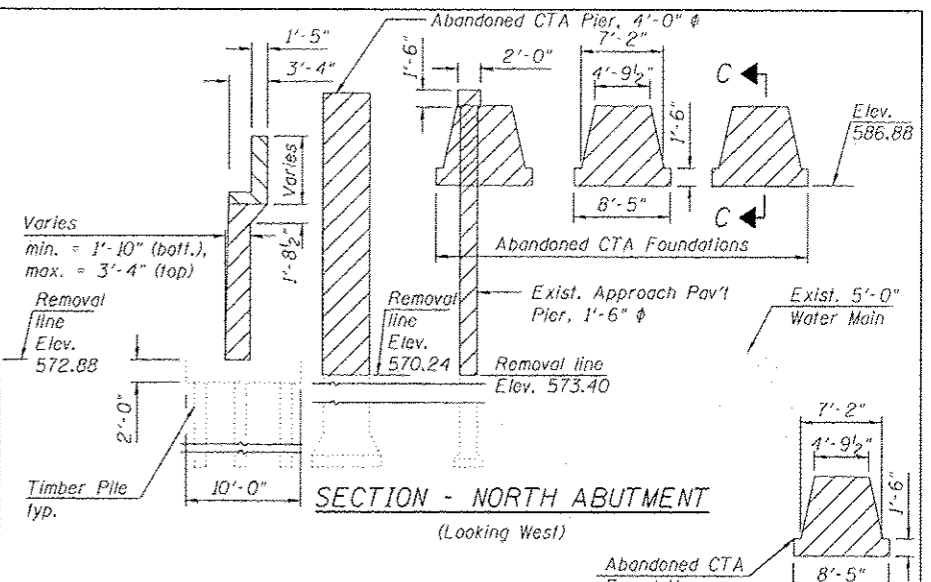
ELEVATION - SOUTH ABUTMENT REMOVAL
(Looking South)



SECTION - SOUTH ABUTMENT
(Looking East)

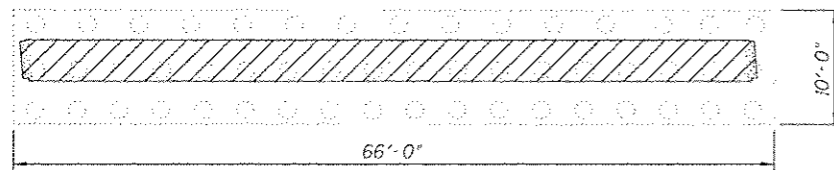


ELEVATION - NORTH ABUTMENT REMOVAL
(Looking North)

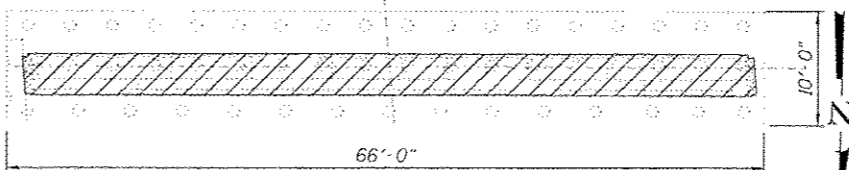


SECTION - NORTH ABUTMENT
(Looking West)

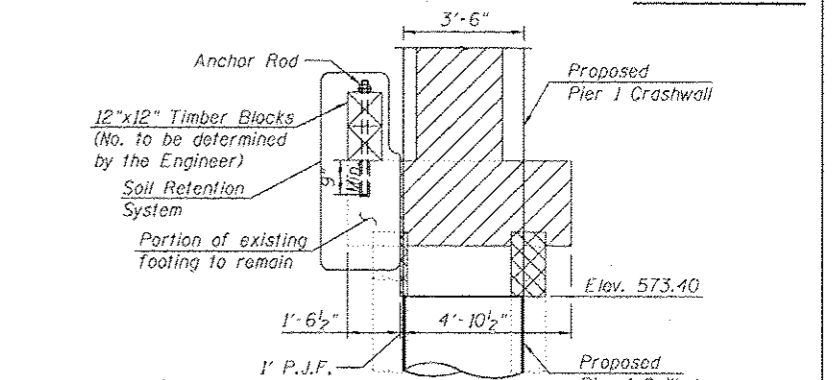
SECTION C-C



FOOTING PLAN - SOUTH ABUTMENT

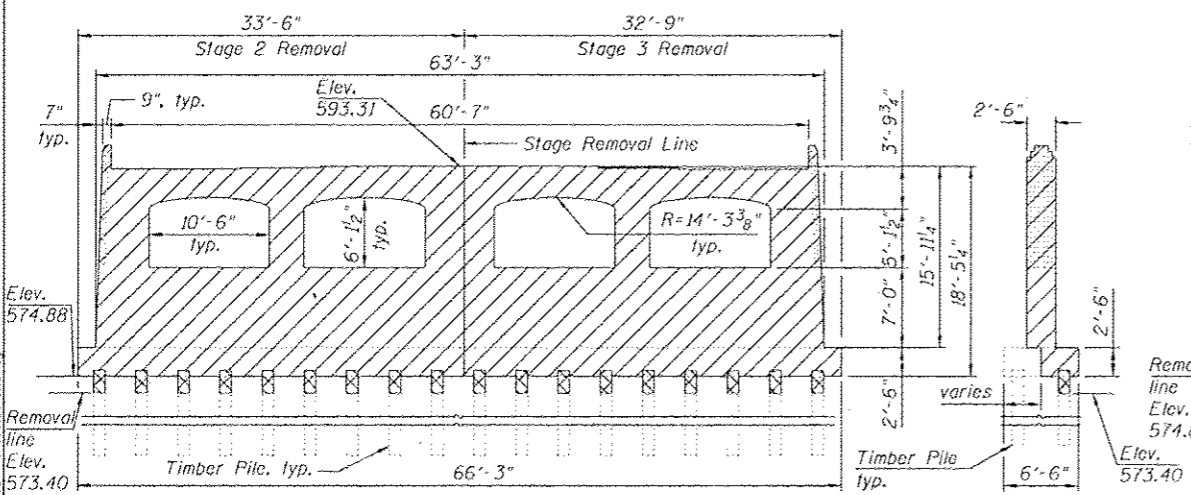


FOOTING PLAN - NORTH ABUTMENT



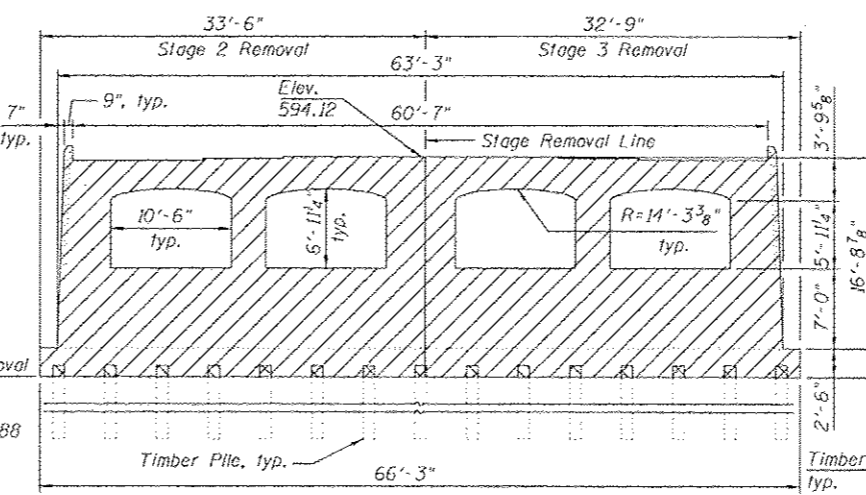
SECTION A-A
At East End of Proposed Pier 1 Crashwall

SECTION B-B
At West End of Proposed Pier 1 Crashwall



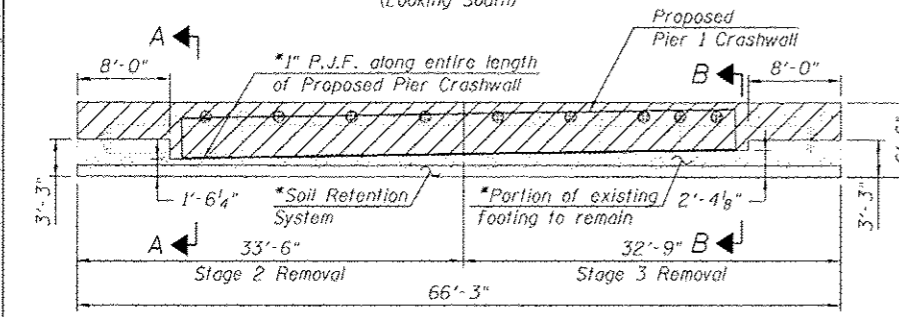
ELEVATION - PIER 1 REMOVAL
(Looking South)

SIDE ELEVATION PIER 1
(Looking East)

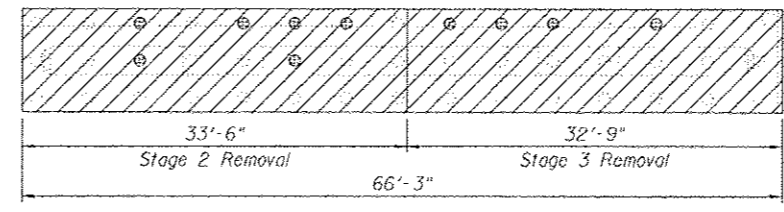


ELEVATION - PIER 2 REMOVAL
(Looking South)

SIDE ELEVATION PIER 2
(Looking East)



FOOTING PLAN - PIER 1



FOOTING PLAN - PIER 2

NOTES:
1. This portion of the footing, with the addition of 12"x12" timber blocks above it, will be utilized as a Soil Retention System. See Sections A-A & B-B. Cost of Soil Retention System shall be included with Removal of Existing Structures No. 1. See Special Provision.
2. For additional notes, see Sheet SI-06.

LEGEND:

	Concrete removal
	Portion of existing timber pile to be removed
	Pile Extraction

HBM ENGINEERING GROUP, LLC CONSULTING & DESIGN INSPECTION & TESTING RESEARCH & TESTING 4415 WEST HARRISON ST. SUITE 231 MILLICAN, IL 60162 PHONE: (708) 236-0900 FAX: (708) 236-0901	R161789-6A425-587-RemovalDetail.dgn USER NAME: willard@hbm.com PLOT SCALE: 1/8" = 1'-0" PLOT DATE: 7/15/2013	DESIGNED - MI, MAF, JMC DRAWN - JMC, MAF CHECKED - MI, MAF, JMC DATE - 6/17/2013	REVISIONS - 01/19/2013 MI, MAF REVISIONS - REVISIONS - REVISIONS -
--	---	---	--

STATE OF ILLINOIS
DEPARTMENT OF TRANSPORTATION

EXISTING STRUCTURE REMOVAL DETAILS 1 OF 2
STRUCTURE NO. 016-1709

SCALE:	SHEET SI-07 OF 51 SHEETS	STA.	10 STA.	F.A.L. R.T.L.	SECTION	COUNTY	TOTAL SHEETS	SHEET NO.
				90/94/290	2013-007R	COOK	317	151
							CONTRACT NO. 60W25	
ILLINOIS REG. AND PROJECT								