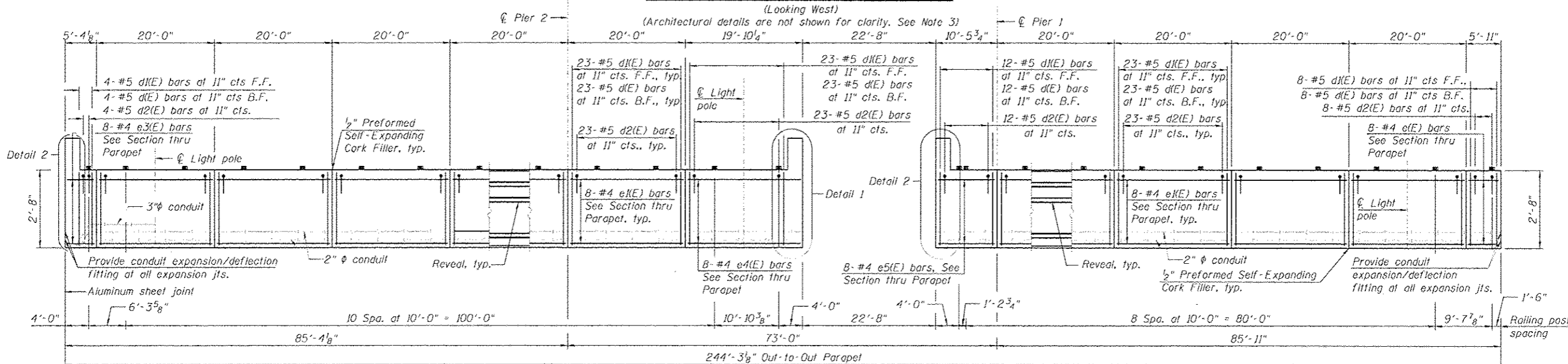


**INSIDE ELEVATION OF WEST PARAPET**

(Looking West)

(Architectural details are not shown for clarity. See Note 3)



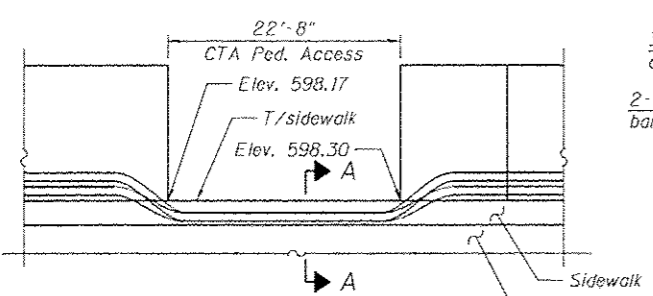
**INSIDE ELEVATION OF EAST PARAPET**

(Looking East)

(Architectural details are not shown for clarity. See Note 3)

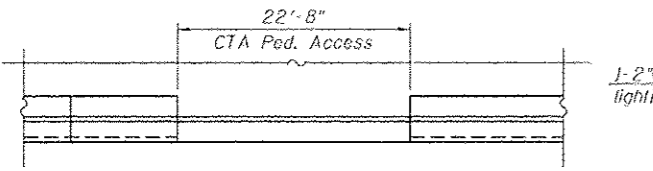
**NOTES:**

1. For notes, bar diagrams and bill of material, see Sheet SI-18.
2. All edges shall be chamfered 3/4\".
3. For architectural details on the parapets, see Roadway plans.
4. For Bridge Fence Railing (special) layout and post spacing, see Sheet SI-21.
5. For Bridge Fence Railing (special) details, see Sheet SI-21A.
6. For Decorative Railing Parapet Mounted layout and post spacing, see Sheets 269C and 269D.
7. For Decorative Railing Parapet Mounted details, see Sheet SI-20.
8. For Section A-A at CTA Entrance, see Sheet SI-18.
9. For location of light pole and traffic signals on bridge see Sheet SI-17, Electrical and ITS plans.
10. The reveal on the Chicago parapet will not be paid separately and shall be included in the cost of the pay item "Concrete Structures"



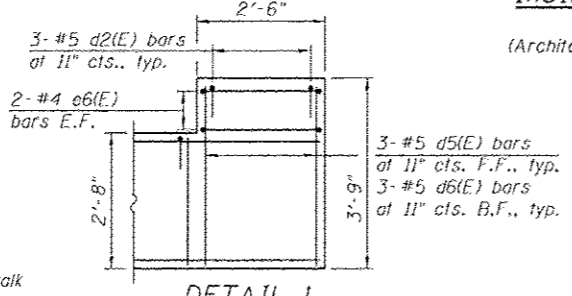
**ELEVATION AT CTA ACCESS**

(Showing conduit location)



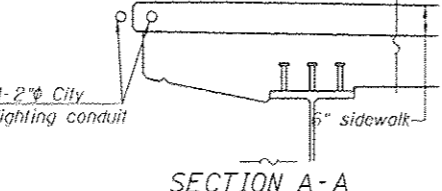
**PLAN AT CTA ACCESS**

(Showing conduit location)



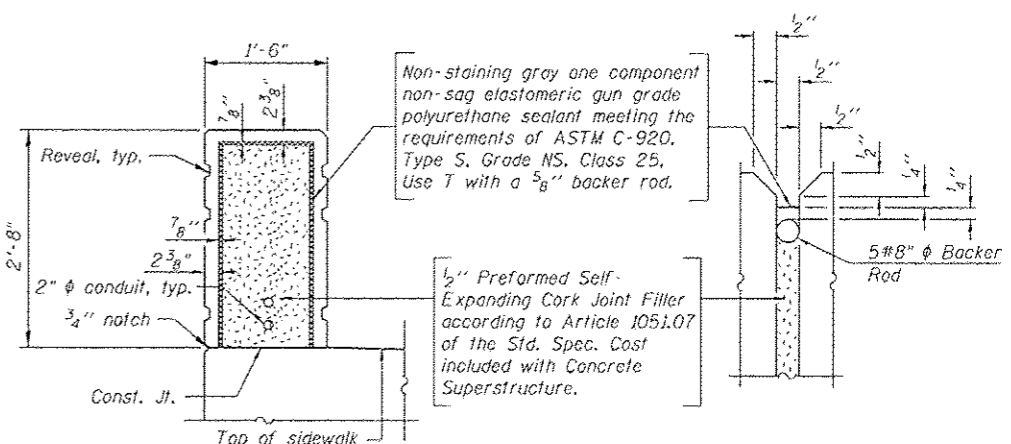
**DETAIL 1**

(Detail 2 opposite hand)



**SECTION A-A**

(Showing conduit location)



**PARAPET JOINT DETAILS**

FILE PATH: C:\Users\jw\Documents\Projects\016-1709-01\SI-17-Parapet.dwg

<b>HBM</b> ENGINEERING GROUP, LLC CONSULTING & DESIGN INSPECTION & TESTING RESEARCH & TESTING 4415 WEST HARRISON ST. SUITE 231 HILLSIDE, IL 60122 PHONE: (708) 236-0900 FAX: (708) 236-0901	0161709-016-1709-01-SI-17-Parapet.dwg USER NAME = william.douglas PLOT SCALE = 9/8" = 1' / 32" PLOT DATE = 7/15/2013	DESIGNED - MI, WM DRAWN - WM, JJS CHECKED - MAJ, MI, JJS DATE - 6/17/2013	REVISED - 07/19/2013 MI, LAE REVISED - REVISED - REVISED -	<b>STATE OF ILLINOIS</b> <b>DEPARTMENT OF TRANSPORTATION</b>	<b>PARAPET ELEVATIONS AND DETAILS</b> <b>STRUCTURE NO. 016-1709</b>		F.A.I. R.I.E. 90794/290 SECTION 2013-007R COUNTY COOK TOTAL SHEETS 317 SHEET NO. 161 CONTRACT NO. 60W25
	SCALE: SHEET SI-17 OF 51 SHEETS STA. TO STA.				ILLINOIS FED. AID PROJECT		
	Entire sheet revised						