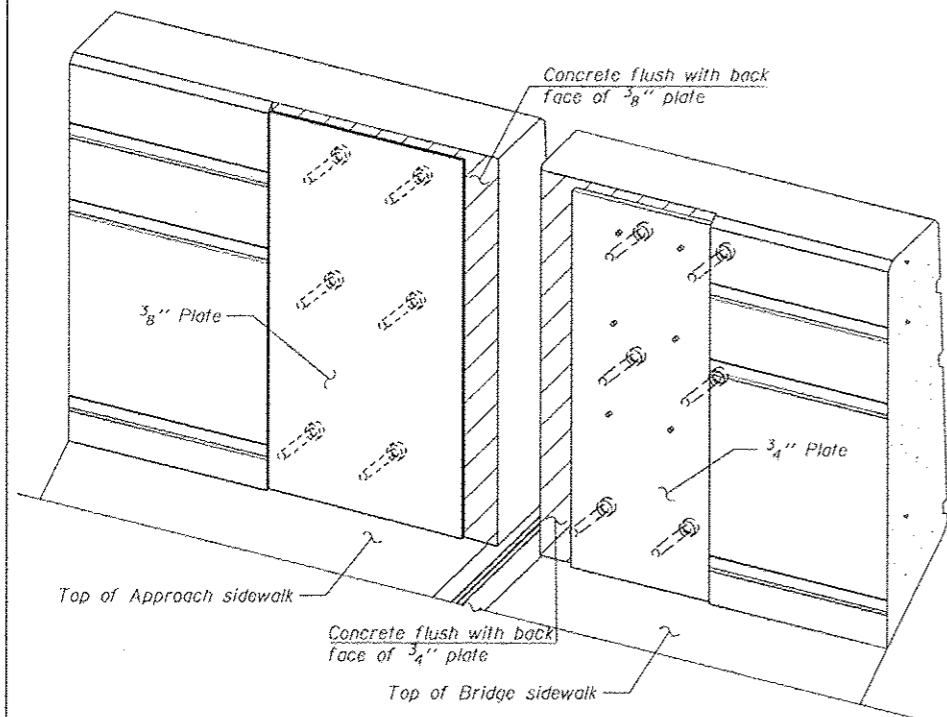
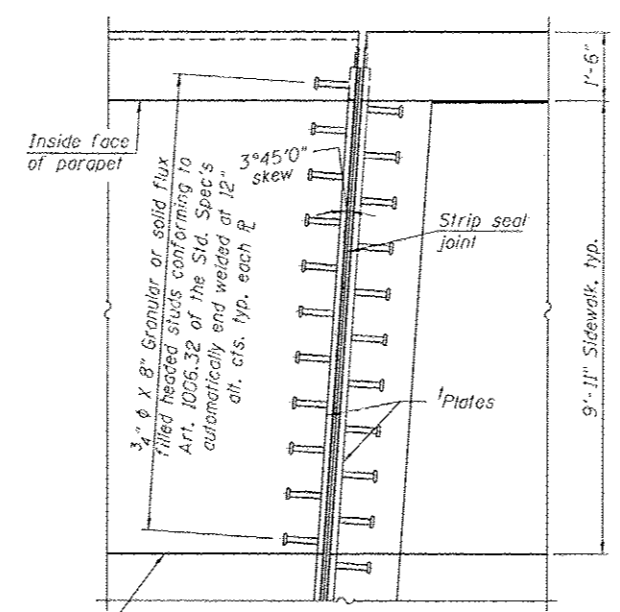


**BILL OF MATERIAL**

Item	Unit	Total
Preformed Joint Strip Seal	Foot	124

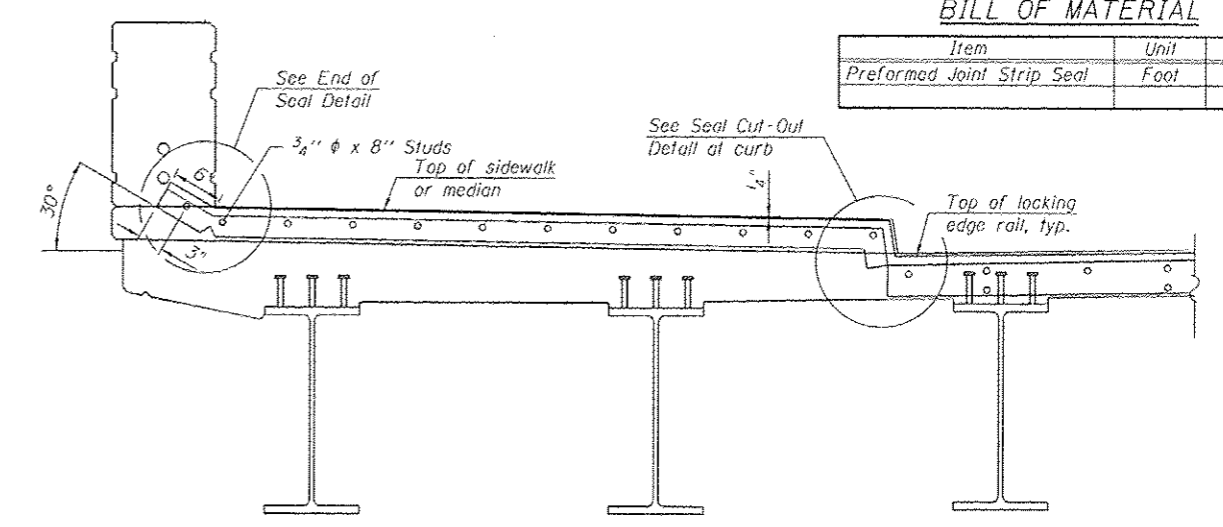


**TRIMETRIC VIEW**  
(Showing back plates only)



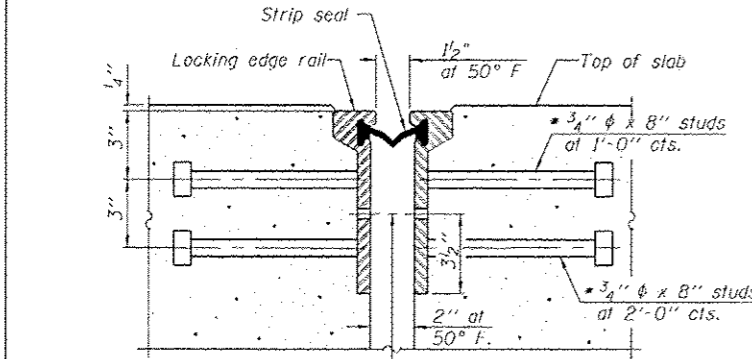
**PLAN AT N. ABUTMENT SIDEWALK**

NW Shown NE opposite hand typ. for S. Abut.

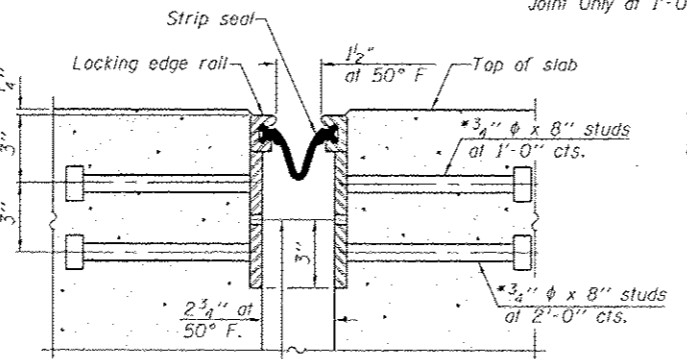


**TYPICAL END TREATMENT AT SIDEWALK**

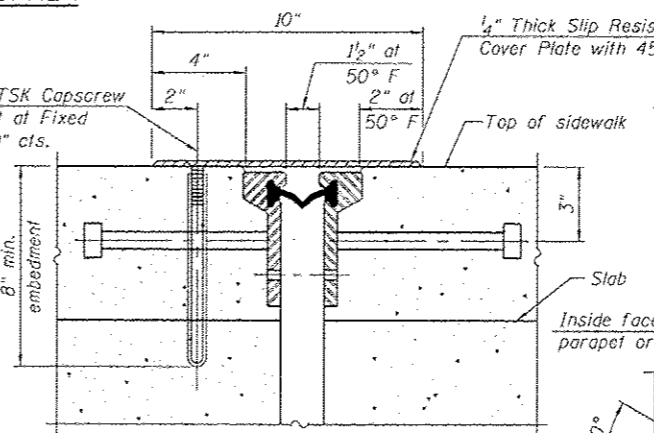
Shorter plates with a single row of studs at 12" cts. are necessary on sidewalks



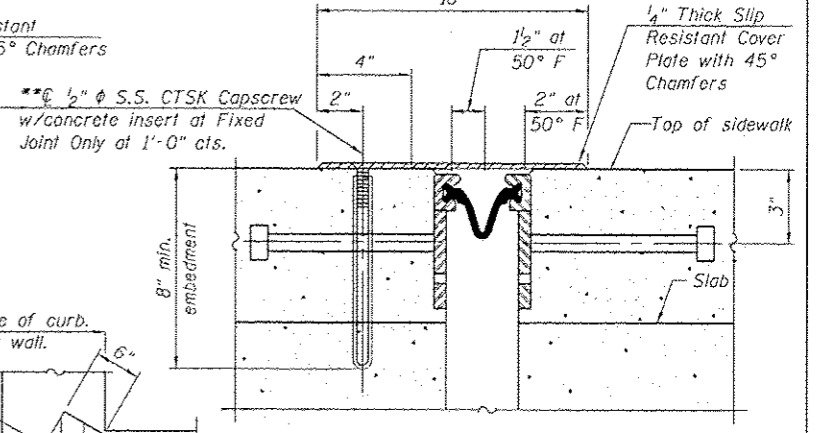
**SECTION THRU ROLLED RAIL JOINT**



**SECTION THRU WELDED RAIL JOINT**



**SECTION THRU ROLLED RAIL JOINT AT SIDEWALK**



**SECTION THRU WELDED RAIL JOINT AT ADA RAMP**

$\frac{7}{16}$ "  $\phi$  holes at 4'-0" cts. for  $\frac{3}{8}$ "  $\phi$  bolts. All bolts shall be burned, sawed, or chipped off flush with the plates after forms are removed, typ.

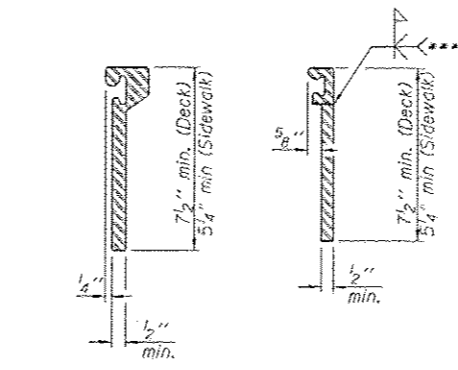
$\frac{7}{16}$ "  $\phi$  holes at 4'-0" cts. for  $\frac{3}{8}$ "  $\phi$  bolts. All bolts shall be burned, sawed, or chipped off flush with the plates after forms are removed, typ.

Cost shall be included with Preformed Joint Strip Seal

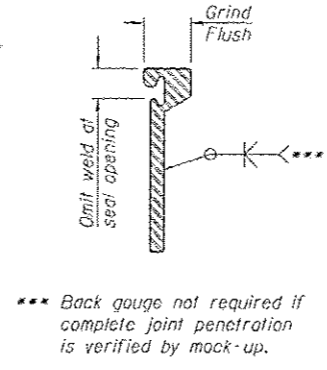
Granular or solid flux filled headed studs conforming to Article 1006.32 of the Std. Specs., automatically end welded.

**NOTES:**

- The strip seal shall be made continuous and shall have a minimum thickness of  $\frac{1}{4}$ ". The configuration of the strip seal shall match the configuration of the Locking Edge Rails. Open or "webbed" strip seal gland configurations are not permitted. The gland shall be sized for a maximum rated movement of 4 inches.
- The Locking Edge Rails depicted are conceptual only, except for the minimum dimensions shown. The actual configuration of the Locking Edge Rails and matching strip seal may vary from manufacturer to manufacturer. Flanged edge rails will not be allowed. Locking Edge Rails may be spliced at slope discontinuities.
- The manufacturer's recommended installation methods shall be followed.
- The joint opening and deck dimensions detailed on the superstructure are based on a rolled rail expansion joint. If the Contractor elects to use the welded rail expansion joint, the opening and deck dimensions shall be modified according to the dimensions detailed on this sheet. Required modifications shall be made at no additional cost to the State.
- All steel components shall be galvanized after fabrication according to Article 520.03 of the Standard Specifications. Maximum space between rail segments shall be  $\frac{3}{16}$ ", sealed with a suitable sealant. Joints in rails within 10 ft. of curbs shall be welded.
- Parapet plates and anchorage studs for skews > 30° included in the cost of Preformed Joint Strip Seal.



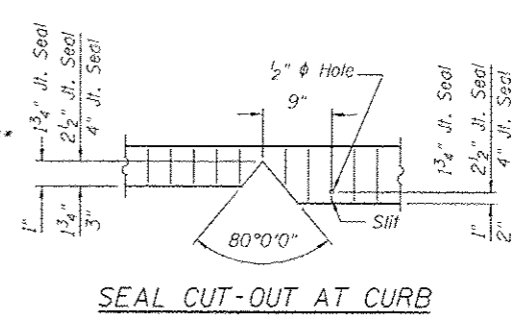
**ROLLED EXTRUDED RAIL WELDED RAIL LOCKING EDGE RAILS**



**LOCKING EDGE RAIL SPLICE**

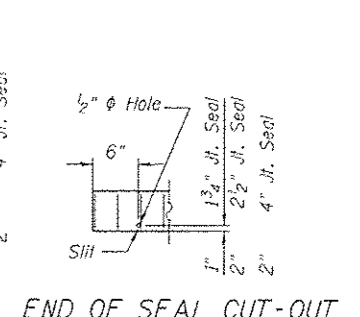
The inside of the locking edge rail groove shall be free of weld residu. Rolled rail shown, welded rail similar.

**END OF SEAL**



**SEAL CUT-OUT AT CURB**

**END OF SEAL CUT-OUT**



**END OF SEAL CUT-OUT**

**NOTES:**

- At East Abut. and West Abut. attach cover plate to the Ramp Pavement with  $\frac{1}{2}$ "  $\phi$  S.S. CTSK capscrew with concrete insert at 1'-0" cts.
- All steel components shall be galvanized according to Article 520.03 of the Standard Specifications.

**HBM**  
ENGINEERING GROUP, LLC  
CONSULTING & DESIGN  
INSPECTION & TESTING  
RESEARCH & TESTING

4415 WEST HARRISON ST.  
SUITE 231  
MILWAUKEE, IL 60162  
PHONE: (708) 236-0900  
FAX: (708) 236-0901

0161709-60W25-019-ExpJoint.dgn  
USER NAME: willmar.davis  
PLOT SCALE: 1/8"=1'-0"  
PLOT DATE: 7/15/2013  
DESIGNED - MI, WM  
DRAWN - WM, MAF  
CHECKED - MAI, MI, JJS  
DATE - 6/17/2013  
REVISED - 07/19/2013 MI, WM  
REVISED -  
REVISED -  
REVISED -

**STATE OF ILLINOIS  
DEPARTMENT OF TRANSPORTATION**

**PREFORMED JOINT STRIP SEAL  
STRUCTURE NO. 016-1709**  
SCALE: SHEET 51-19 OF 51 SHEETS STA. TO STA.

F.A.I. RTE.	SECTION	COUNTY	TOTAL SHEETS	SHEET NO.
90/94/290	2013-007R	COOK	317	163
CONTRACT NO. 60W25			ILLINOIS FED. AID PROJECT	