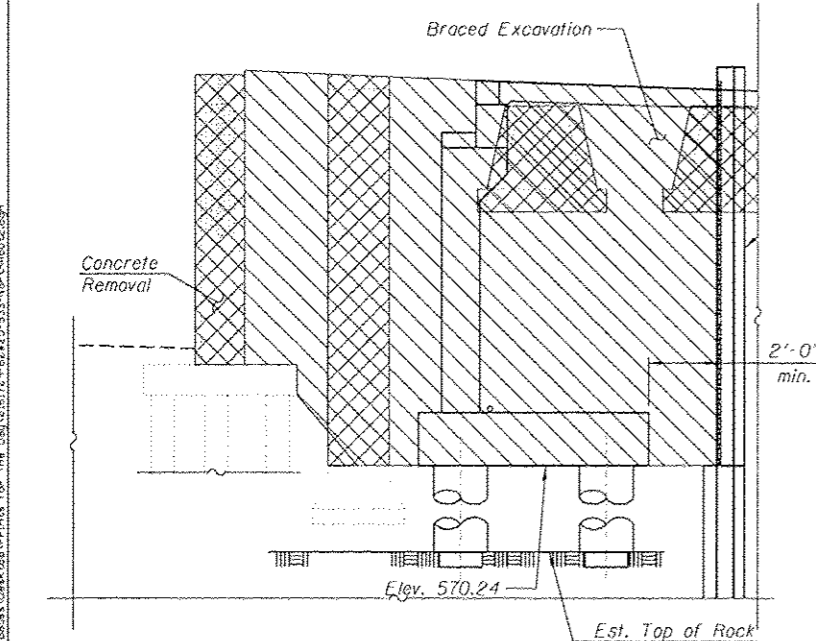
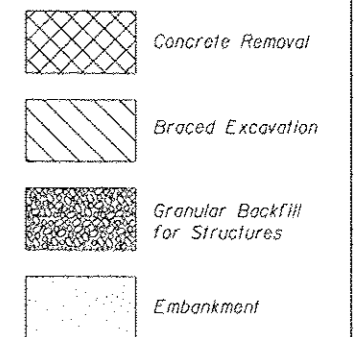


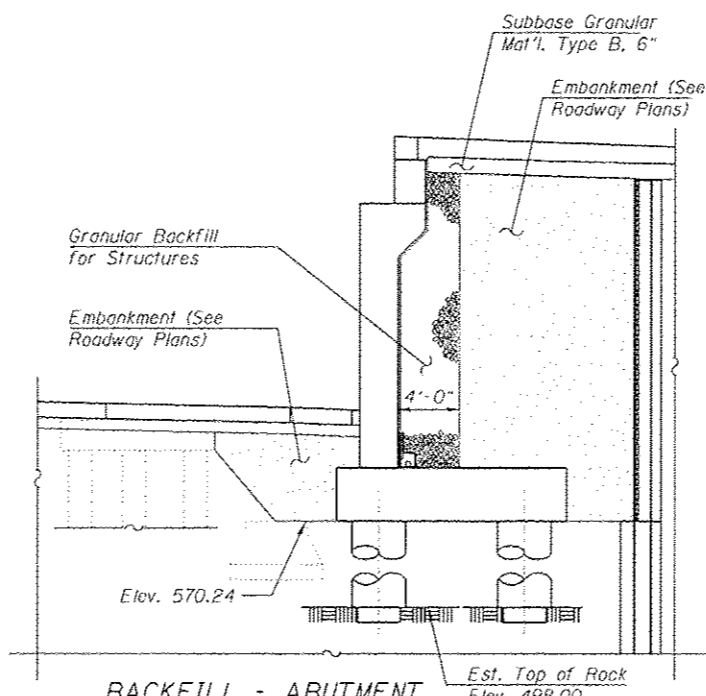
FOOTING LAYOUT

- NOTES:**
1. Reinforcement bars designated (E) shall be epoxy coated.
 2. Bars noted thus 3x2-#5 indicates 3 lines of bars with 2 bars per line.
 3. Driving piles and temporary sheet piling are not allowed.
 4. For Bill of Materials, see Sheet SI-34.
 5. For existing pile removal details, see Sheet SI-08.
 6. Space footing reinforcement to miss extended reinforcement from drilled shaft.
 7. For wingwall braced excavation and backfill details, see Sheet SI-35.
 8. Installation of drilled shaft may require coring through existing pile balls. Additional costs included in Drilled Shaft in Soil.

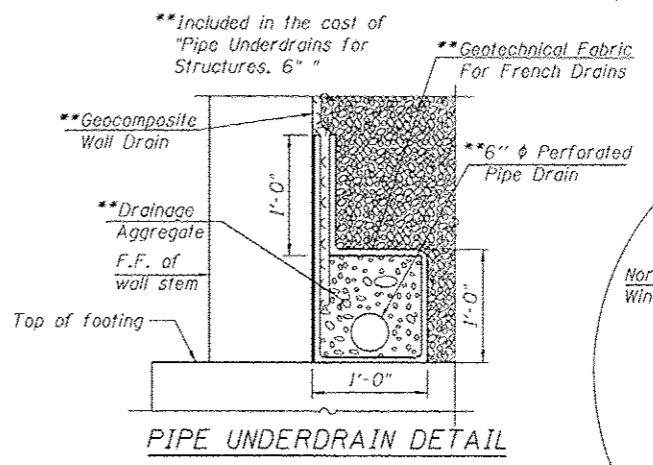
LEGEND:



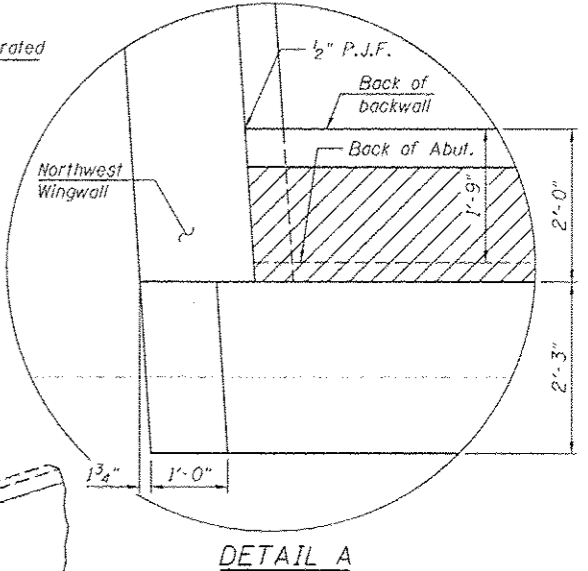
BRACED EXCAVATION - ABUTMENT



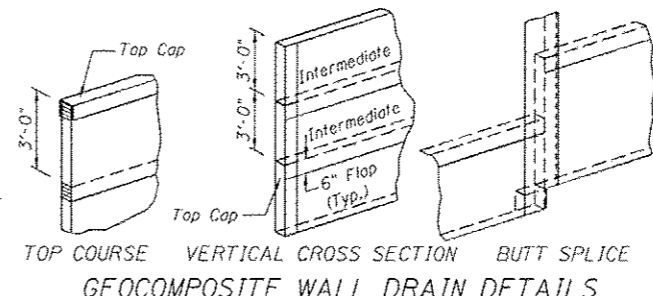
BACKFILL - ABUTMENT



PIPE UNDERDRAIN DETAIL



DETAIL A



GEOCOMPOSITE WALL DRAIN DETAILS

FILE PATH = C:\Users\h111\Documents\Drawings\Drawings\60W25-533-NorthAbut2.dgn

HBM
ENGINEERING GROUP, LLC
CONSULTING & DESIGN
INSPECTION & TESTING
RESEARCH & TESTING

4415 WEST HARRISON ST.
SUITE 231
MILLSTONE, IL 60162
PHONE: (708) 236-0300
FAX: (708) 236-0303

DESIGNED - MI, MAF	REVISED - 07/15/2013 MI, LAB
DRAWN - LAB, MAF	REVISED -
CHECKED - MAI, MI, WM	REVISED -
DATE - 6/17/2013	REVISED -

STATE OF ILLINOIS
DEPARTMENT OF TRANSPORTATION

NORTH ABUTMENT FOOTING PLAN AND SECTIONS
STRUCTURE NO. 016-1709

F.U.I. RTE	SECTION	COUNTY	TOTAL SHEETS	SHEET NO.
50/94/290	2013-007R	COOK	317	177
CONTRACT NO. 60W25			ILLINOIS FED. AID PROJECT	

⚠ Entire sheet revised