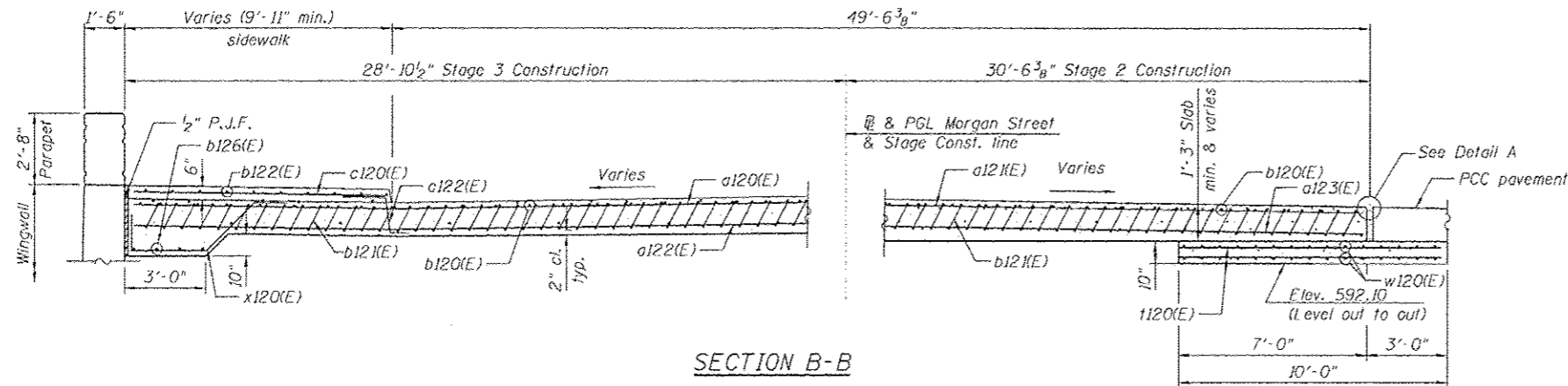
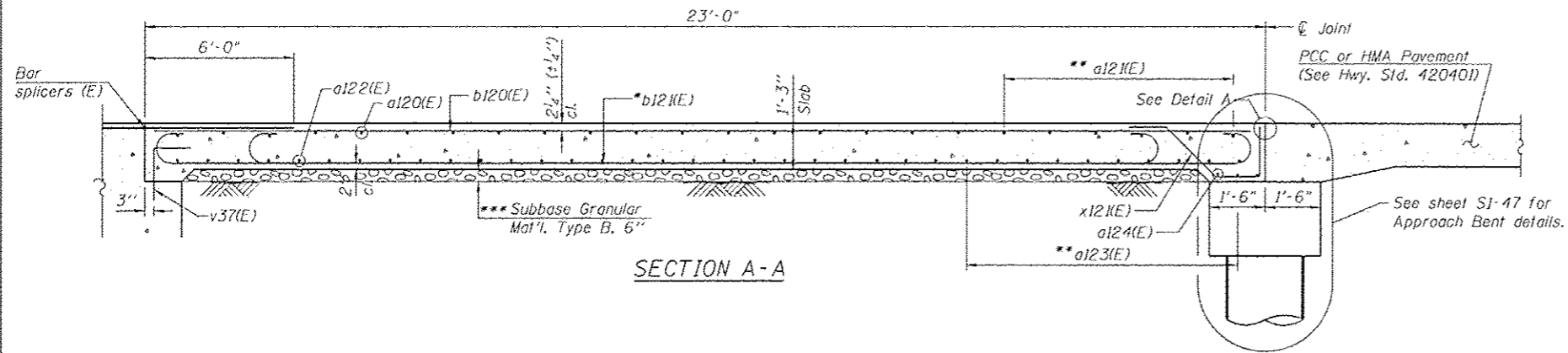


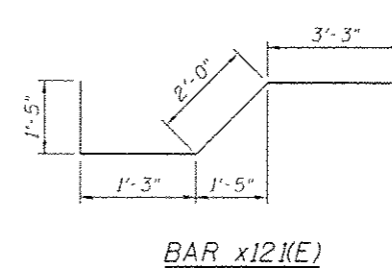
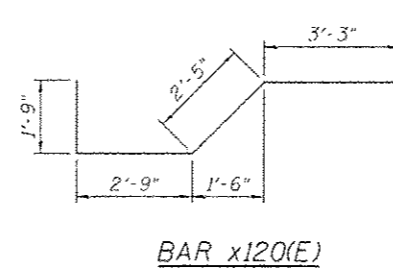
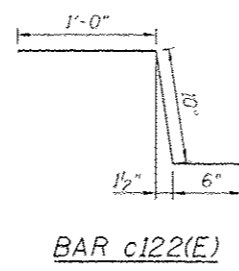
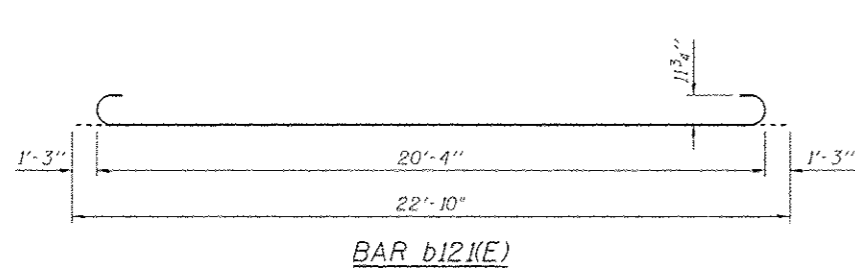
BILL OF MATERIAL

Bar	No.	Size	Length	Shape
a120(E)	14	#4	28'-6"	—
a12(E)	26	#4	30'-1"	—
a122(E)	26	#5	28'-6"	—
a123(E)	46	#5	30'-1"	—
a124(E)	6	#5	30'-1"	—
b120(E)	49	#4	22'-8"	—
b12(E)	144	#9	22'-10"	—
b122(E)	11	#5	22'-8"	—
b123(E)	2	#5	8'-0"	—
b124(E)	2	#4	8'-0"	—
b125(E)	2	#9	8'-0"	—
b126(E)	4	#5	20'-1"	—
c120(E)	18	#5	9'-6"	—
c12(E)	6	#5	11'-1"	—
c122(E)	24	#5	2'-4"	—
i120(E)	48	#4	9'-8"	—
w120(E)	40	#5	20'-7"	—
x120(E)	23	#5	10'-2"	—
x12(E)	60	#5	7'-11"	—
Concrete Structures			Cu. Yd.	6.5
Concrete Superstructure			Cu. Yd.	72.8
Bridge Deck Grooving			Sq. Yd.	124
Protective Coat			Sq. Yd.	154
Reinforcement Bars, Epoxy Coated			Pound	17,760



NOTES:

1. See Sheet SI-45 for Detail A.
 2. Approach slab and sidewalk concrete shall be paid for as Concrete Superstructure.
 3. Approach footing concrete shall be paid for as Concrete Structures.
 4. Reinforcement shall be paid for as Reinforcement Bars, Epoxy Coated.
 5. For v37(E) bar details, see Sheet SI-34.
 6. The approach footing maximum applied service bearing pressure (Q_{max}) = 2.0 ksf.
 7. For bar splicer details, see Sheet SI-48.
 8. Cost of excavation for approach footing included with Concrete Structures.
 9. For Granular Backfill for Structures and drainage treatment details, see sheet SI-33 and SI-35.
- * Tilt bars as required to maintain clearance.
 ** Order bars at full length and cut in field to fit.
 *** Cost included with Concrete Superstructure.



FILE PATH: C:\Users\wjl\OneDrive\Documents\Projects\13 The_Drive\13171313-02\25-546-13-13\13171313-02.dwg
 HBM ENGINEERING GROUP, LLC
 4415 WEST HARRISON ST.
 SUITE 231
 HILLSIDE, IL 60122
 PHONE: (708) 236-0500
 FAX: (708) 236-0501

HBM ENGINEERING GROUP, LLC CONSULTING & DESIGN INSPECTION & TESTING RESEARCH & TESTING	4415 WEST HARRISON ST. SUITE 231 HILLSIDE, IL 60122 PHONE: (708) 236-0500 FAX: (708) 236-0501	R161729-60W25-546-13-13\13171313-02.dwg USER NAME: wjl.mcdougal PLOT SCALE: 6/8,000 1" = 11' PLOT DATE: 7/15/2013	DESIGNED - MI, PH, MWM DRAWN - PH CHECKED - MAJ, MI, MWM DATE - 6/17/2013	REVISIONS: 07/19/2013 MI, WM (Entire sheet revised)	STATE OF ILLINOIS DEPARTMENT OF TRANSPORTATION	NORTH APPROACH SLAB SECTIONS AND DETAILS STRUCTURE NO. 016-1709	F.A.I. R.T.E. 90/94/290	SECTION 2013-007R	COUNTY COOK	TOTAL SHEETS 317	SHEET NO. 190	CONTRACT NO. 60W25
	SCALE: SHEET SI-46 OF 51 SHEETS STA. TO STA.						ILLINOIS FED. AID PROJECT					