

STANDARD BAR SPLICER ASSEMBLY

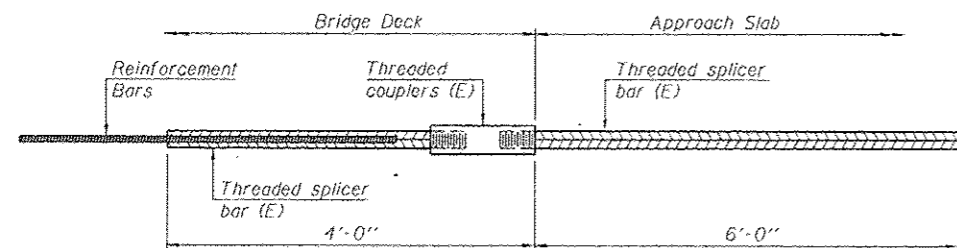
Bar size to be spliced	Minimum Lap Lengths					
	Table 1	Table 2	Table 3	Table 4	Table 5	Table 6
3, 4	1'-5"	1'-11"	2'-1"	2'-4"	2'-7"	2'-11"
5	1'-9"	2'-5"	2'-7"	2'-11"	3'-3"	3'-8"
6	2'-1"	2'-11"	3'-1"	3'-6"	3'-10"	4'-5"
7	2'-9"	3'-10"	4'-2"	4'-8"	5'-2"	5'-10"
8	3'-8"	5'-1"	5'-5"	6'-2"	6'-9"	7'-8"
9	4'-7"	6'-5"	6'-10"	7'-9"	8'-7"	9'-8"

- Table 1: Black bar, 0.8 Class C
- Table 2: Black bar, Top bar lap, 0.8 Class C
- Table 3: Epoxy bar, 0.8 Class C
- Table 4: Epoxy bar, Top bar lap, 0.8 Class C
- Table 5: Epoxy bar, Class C
- Table 6: Epoxy bar, Top bar top, Class C

Threaded splicer bar length = min. lap length + 1/2" + thread length

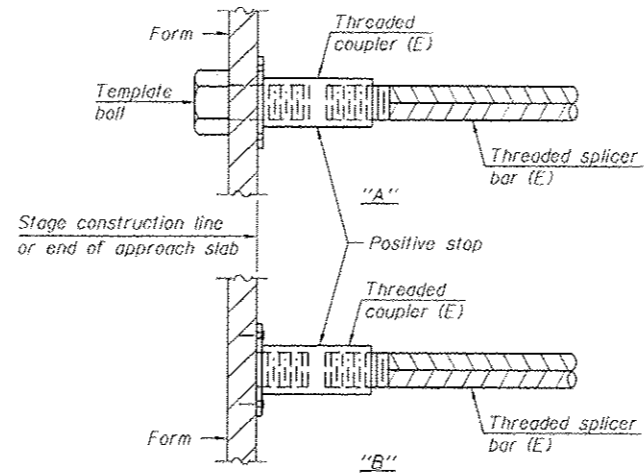
* Epoxy not required on Bar Splicer Assembly components used in conjunction with black bars.

Location	Bar size	No. assemblies required	Table for minimum lap length
Deck	#5	6591	Table 5
Pier 1	#5	10	Table 5
Pier 1	#6	16	Table 5
Pier 1	#8	10	Table 5
Pier 1	#9	15	Table 5
Pier 2	#5	10	Table 5
Pier 2	#6	12	Table 5
Pier 2	#8	10	Table 5
Pier 2	#9	15	Table 5
South Approach	#4	25	Table 5
South Approach	#5	49	Table 5
North Approach	#4	20	Table 5
North Approach	#5	36	Table 5
South Appr. Bent	#8	10	Table 5
South Appr. Bent	#5	2	Table 5
North Appr. Bent	#8	10	Table 5
North Appr. Bent	#5	2	Table 5



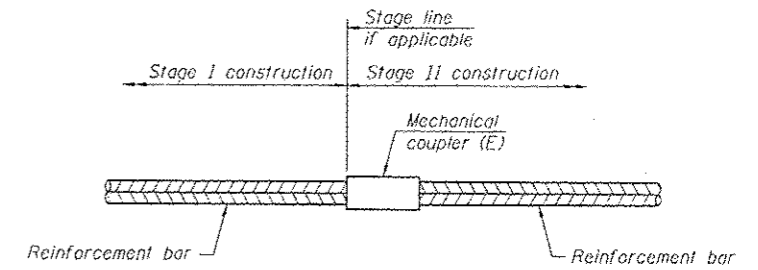
BAR SPLICER ASSEMBLY FOR #5 BAR ON INTEGRAL OR SEMI-INTEGRAL ABUTMENTS

No. required =



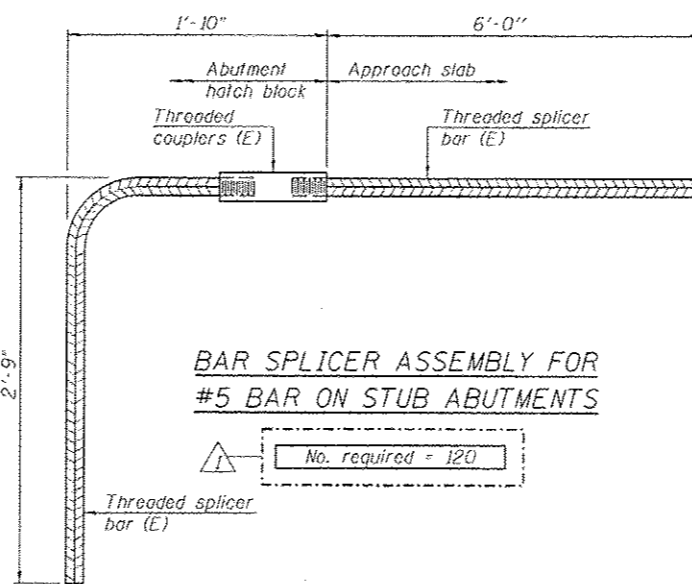
INSTALLATION AND SETTING METHODS

"A" : Set bar splicer assembly by means of a template bolt.
 "B" : Set bar splicer assembly by nailing to wood forms or cementing to steel forms.
 (E) : Indicates epoxy coating.



STANDARD MECHANICAL SPLICER

Location	Bar size	No. assemblies required



BAR SPLICER ASSEMBLY FOR #5 BAR ON STUB ABUTMENTS

No. required = 120

NOTES

Splicer bars shall be deformed with threaded ends and have a minimum 60 ksi yield strength.
 All reinforcement shall be lapped and tied to the splicer bars.
 Bar splicer assemblies shall be epoxy coated according to the requirements for reinforcement bars. See Section 50B of the Standard Specifications.
 See approved list of bar splicer assemblies and mechanical splicers for alternatives.

FILE PATH: C:\Users\m11\OneDrive\Work\Projects\For The Day\0161709-REVISED-54B-BarSplicer.dgn

BSD-1

1-27-12

HBM
 ENGINEERING GROUP, LLC
 CONSULTING & DESIGN
 INSPECTION & TESTING
 RESEARCH & TESTING

4415 WEST HARRISON ST.
 SUITE 231
 HILLSDALE, IL 60162
 PHONE: (708) 236-0900
 FAX: (708) 236-0901

DESIGNED - MI, LAB
 DRAWN - LAB
 CHECKED - MAL, MI, JJS
 DATE - 6/17/2013

REVISIONS
 01/19/2013 MI, LAB
 REVISED -
 REVISED -
 REVISED -

STATE OF ILLINOIS
 DEPARTMENT OF TRANSPORTATION

BAR SPLICER ASSEMBLY AND MECHANICAL SPLICER DETAILS
 STRUCTURE NO. 016-1709

SCALE: SHEET 51-48 OF 51 SHEETS STA. TO STA.

P.A.L. RTE.	SECTION	COUNTY	TOTAL SHEETS	SHEET NO.
90/94/290	2013-007R	COOK	317	192
CONTRACT NO. 60W25			ILL. INDICATED. A10 PROJ. 01	