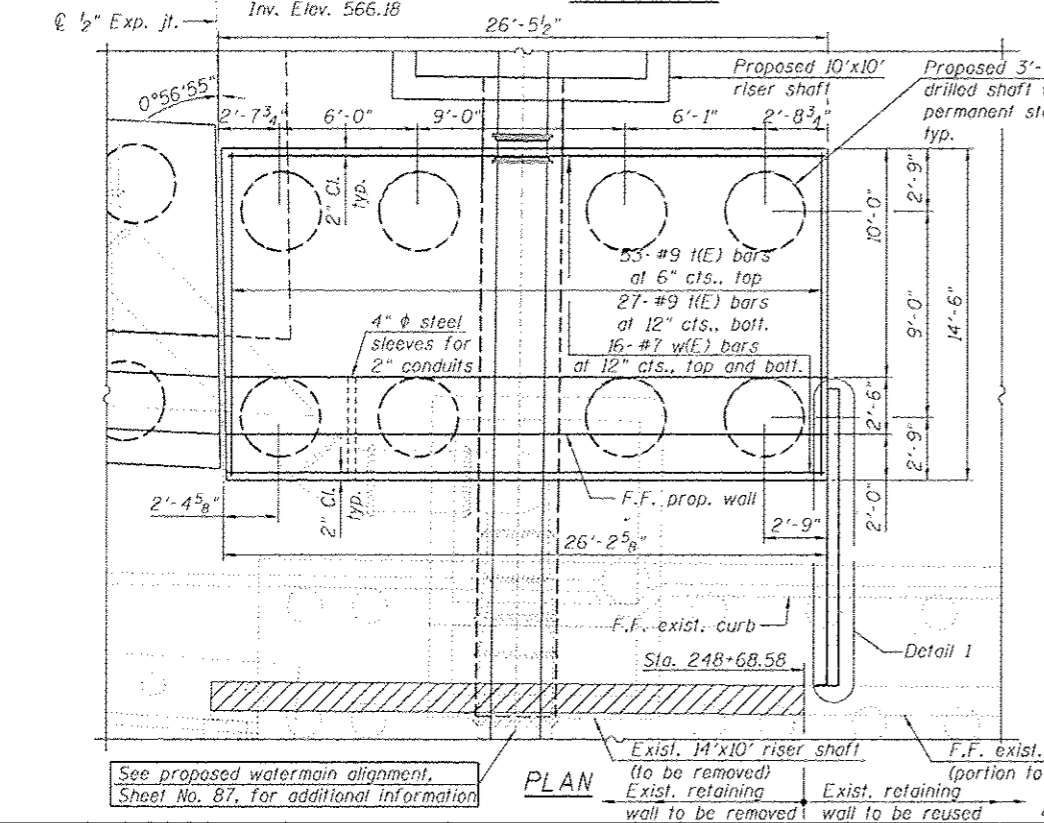
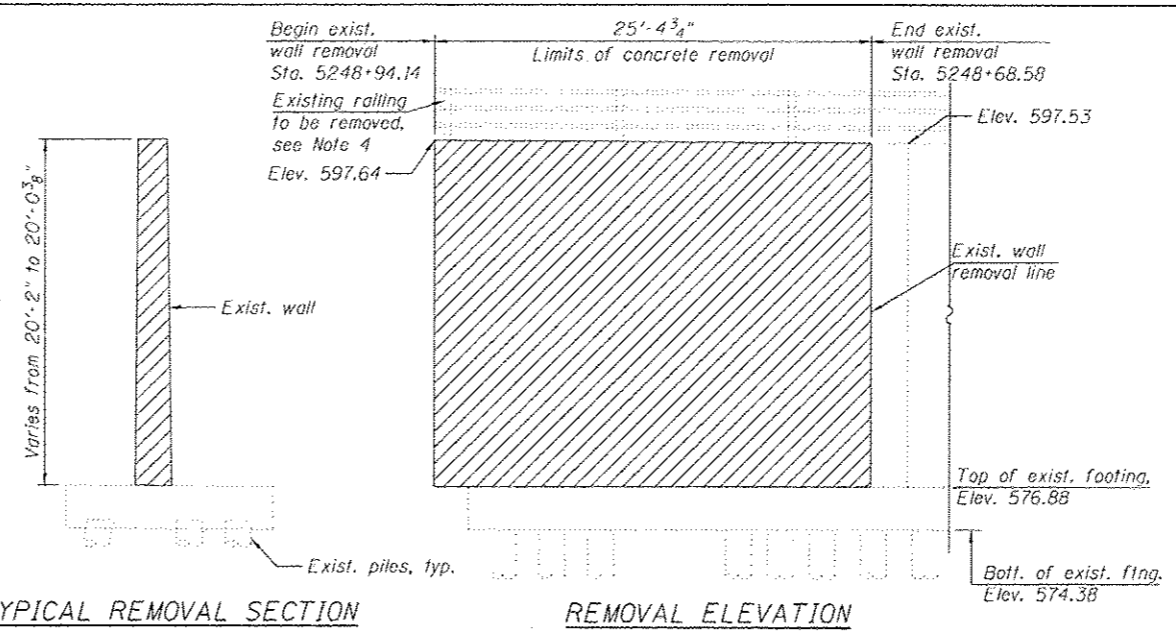


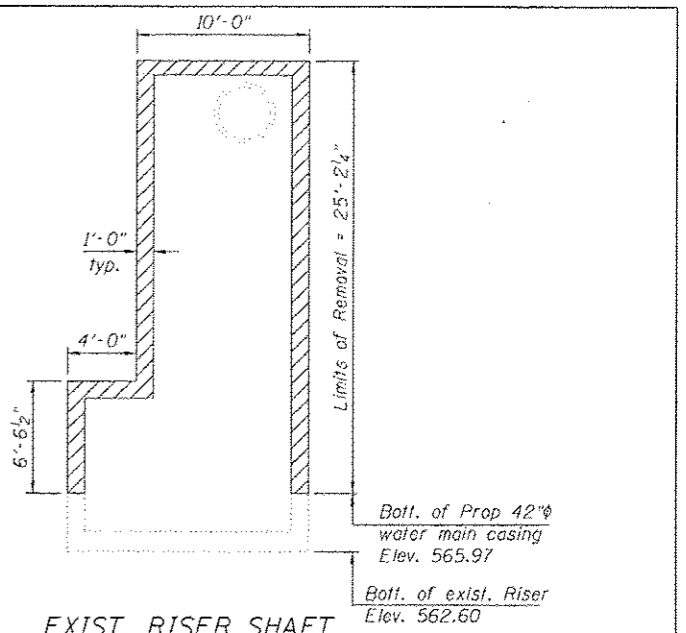
ELEVATION



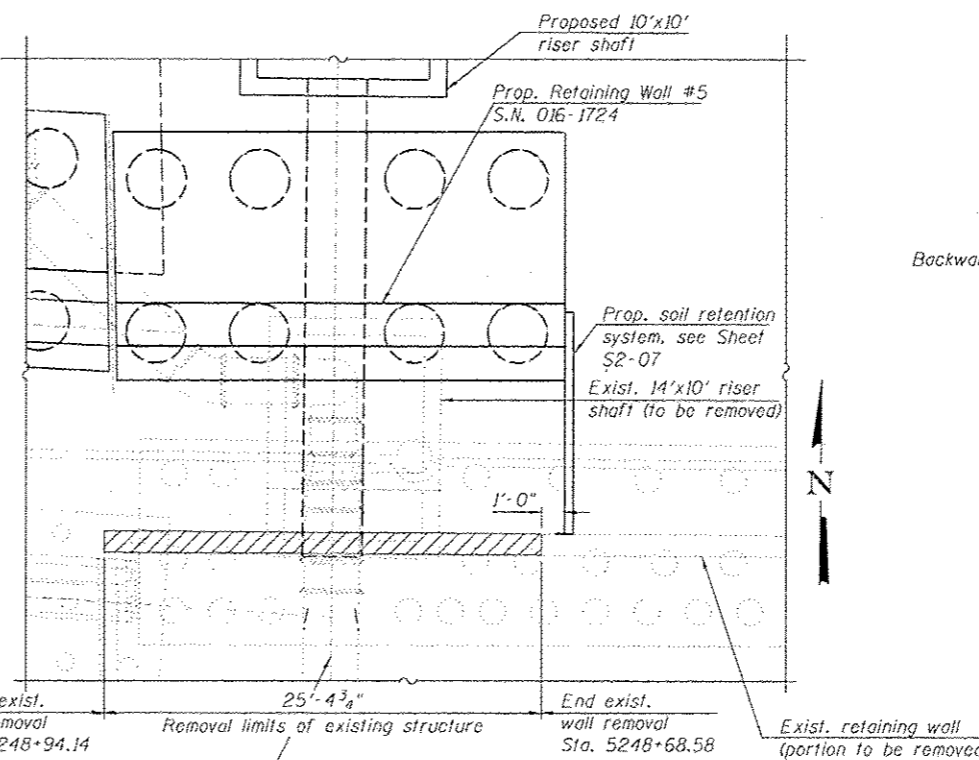
PLAN



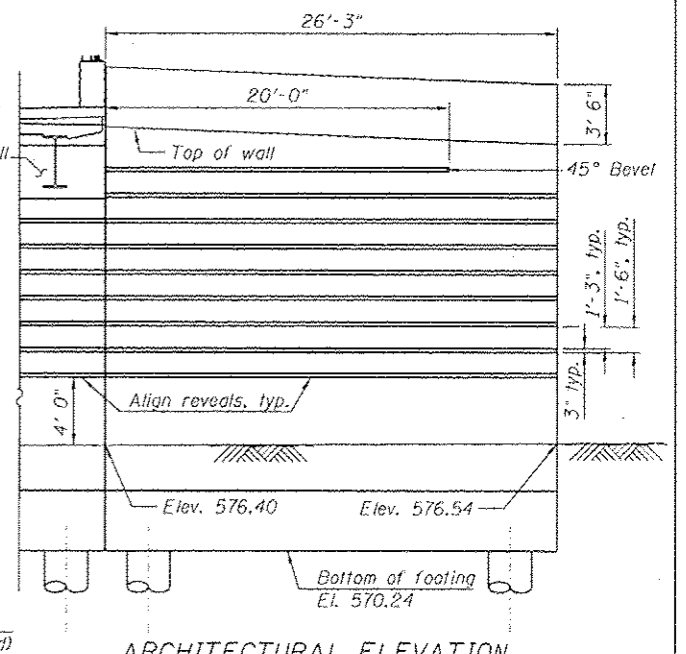
REMOVAL ELEVATION



**EXIST. RISER SHAFT
REMOVAL ELEVATION**



REMOVAL PLAN



ARCHITECTURAL ELEVATION

SCOPE OF WORK FOR RETAINING WALL 5:

1. Remove portion of the wall stem interfering with the riser shaft construction as shown on the Removal Plan and Removal Elevation.
2. Construct the wall drilled shaft, footing stem and parapet.
3. Backfill as shown on Sheet S2-07.
4. Apply protection coat per limits shown on the Typical Wall Section on Sheet S2-06.
5. The remainder of the wall stem, footing and portion of piles interfering with the new future contracts construction will be included in a future contract.
6. The 3" x 1 3/4" reveal will not be paid separately and shall be included in the cost of the pay item "Concrete Structures".

NOTES:

1. For sections, details lap splices and bill of material. See Sheet S2-06.
2. All existing piles are 18" ϕ concrete piles.
3. For Detail 1, Soil Retention System, see Sheet S2-07.
4. Cost for removal of existing railing shall be included with "Concrete Removal".
5. Existing footings and portions of existing piles to be removed in a future contract.

LEGEND:

- B.F. - denotes Back Face
- E.F. - denotes Each Face
- F.F. - denotes Front Face
- Concrete Removal

BILL OF MATERIAL

ITEM	UNIT	TOTAL
Concrete Removal	CU YD	68.0

HBM
ENGINEERING GROUP, LLC
CONSULTING & DESIGN
INSPECTION & TESTING
RESEARCH & TESTING

4415 WEST HARRISON ST.
SUITE 231
MILLSBREE, IL 60162
PHONE: (708) 236-0900
FAX: (708) 236-0901

0161724-6DW25-505-Plan & Elevation.dgn
USER NAME = willmordous
PLOT SCALE = 4.000 1/16"
PLOT DATE = 7/16/2013

DESIGNED - MI, MAF, JJS
DRAWN - JJS, MAF
CHECKED - MAL, MI, LAB
DATE - 6/17/2013

REVISED - Δ 07/19/2013 MI, WM
REVISED -
REVISED -
REVISED -

Entire sheet revised

**STATE OF ILLINOIS
DEPARTMENT OF TRANSPORTATION**

**WALL PLAN & ELEVATION, REM. PLAN & ELEVATION, & REVEAL DETAILS
RETAINING WALL (STRUCTURE NO. 016-1724) AND RISER SHAFT**

SCALE: SHEET S2-05 OF 12 SHEETS 31A. TO S1A.

F.A.I. R.T.E. 90/94/290
SECTION 2013-007R
COUNTY COCK
TOTAL SHEETS 317
SHEET NO. 200
CONTRACT NO. 60W25
ILLINOIS FED. AID PROJECT

FILE PATH: C:\Users\willmordous\Desktop\Prints For The Day\0161724-6DW25-505-Plan & Elevation.dgn