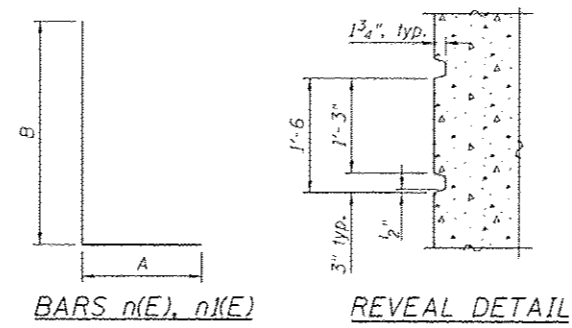
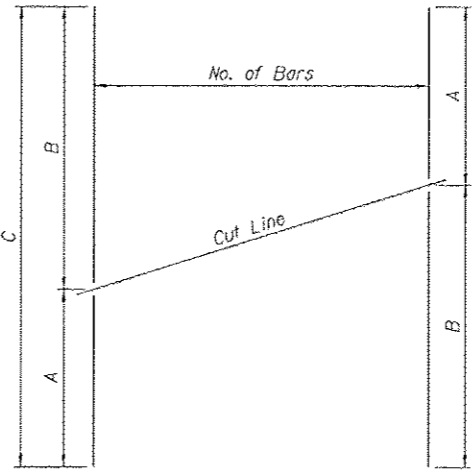


Minimum Bar Laps

Bar	Lap
#4	2'-7"
#5	3'-3"
#6	3'-10"
#7	5'-2"
#8	6'-9"
#9	8'-7"



Bar	A	B
n(E)	10"	6'-3"
n(E)	1'-7"	11'-7"

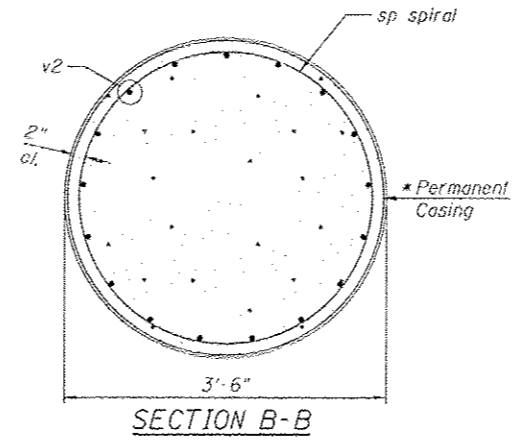


BAR CUTTING DIAGRAM

See table for dimensions. Make all cuts normal to bar axis

BAR TABLE SCHEDULE

Bar	No. of Sets Req'd	No. of Bars Per Set	A	B	C
v(E)	1	14	19'-9"	20'-11"	40'-8"
v(E)	1	27	19'-9"	20'-11"	40'-8"



\* Contractor is responsible for determining the casing thickness and the actual tip elevation to be used. See Article 516.06(d) of the Standard Specifications. Pay limits for the Permanent Casing shall be based on the minimum length shown.

**BILL OF MATERIAL**

Bar	No.	Size	Length	Shape
d(E)	30	#5	6'-10"	U
d(E)	27	#5	6'-6"	U
d2(E)	53	#7	6'-5"	U
d3(E)	30	#5	4'-0"	U
e(E)	11	#5	25'-11"	—
e(E)	1	#8	25'-11"	—
h(E)	44	#5	25'-11"	—
n(E)	27	#5	7'-1"	U
n(E)	53	#9	13'-2"	U
n2(E)	136	#9	12'-10"	U
sp	8	#4	78'-5"	WWWW
k(E)	80	#9	14'-2"	—
v(E)	14	#5	40'-8"	—
v(E)	27	#9	40'-8"	—
v2	272	#9	40'-3"	—
w(E)	32	#7	25'-11"	—
Concrete Structures			CU YD	93.9
Protective Coat			SQ YD	83
Reinforcement Bars			POUND	15,080
Reinforcement Bars, Epoxy Coated			POUND	21,160
Permanent Casing			FOOT	578
Drilled Shaft in Soil			CU YD	206.0

Reinforcement bars designated (E) shall be epoxy coated.

FILE PATH: \\V:\B\SEVEN\Reinforcement\old\sh\m\ad\1\0161724-60W25-505-7.wsl\Detail.dwg  
 HBM 4415 WEST HARRISON ST. SUITE 231 MILWAUKEE, IL 60012 PHONE: (708) 236-0900 FAX: (708) 236-0901  
 0161724-60W25-505-1 Wall Details.dgn USER NAME: almadisson  
 DESIGNED: MI, MAJ, JJS REVISION: 07/19/2013 MI, WM  
 DRAWN: JJS, MAJ REVISION: -  
 CHECKED: MAJ, MI, LAB REVISION: -  
 DATE: 6/17/2013 REVISION: -  
 PLOT SCALE: 2/8" = 1'-0" PLOT DATE: 7/15/2013  
 STATE OF ILLINOIS DEPARTMENT OF TRANSPORTATION  
 SECTIONS, DETAILS AND BILL OF MATERIAL  
 RETAINING WALL (STRUCTURE NO. 016-1724) AND RISER SHAFT  
 SCALE: SHEET 52-06 OF 12 SHEETS STA. TO STA.  
 F.A.I. R.T.E. SECTION COUNTY TOTAL SHEETS SHEET NO.  
 90/94/290 2013-007R COOK 317 201  
 CONTRACT NO. 60W25 ILLINOIS FED. AID PROJECT