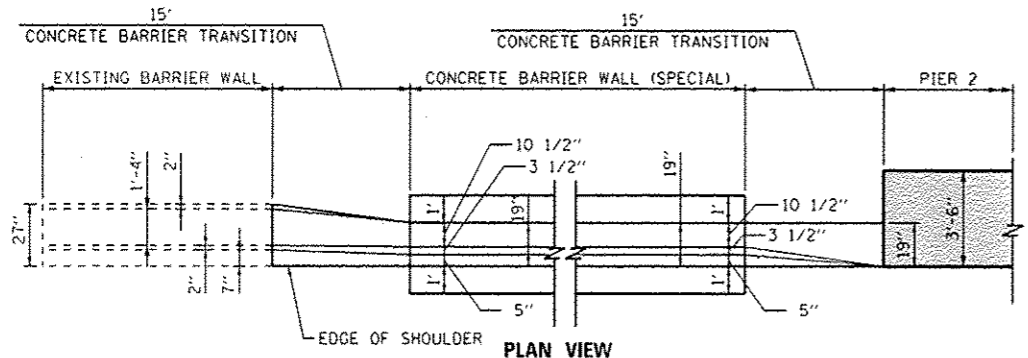


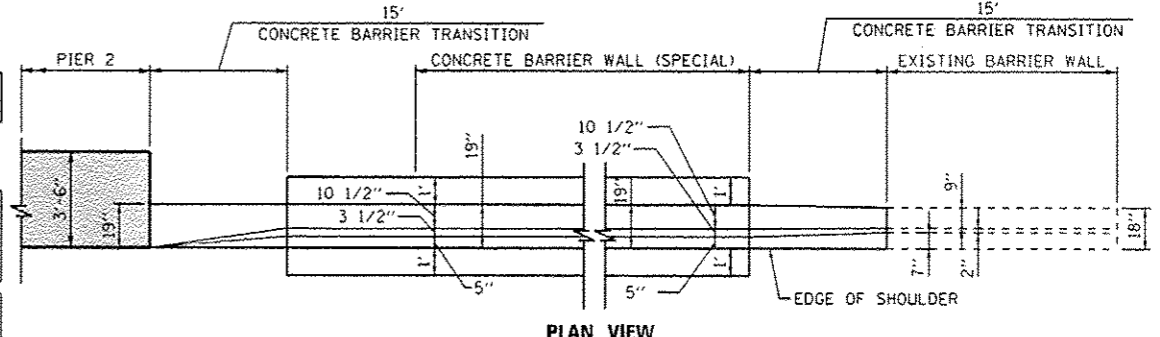
PLAN VIEW
CONCRETE BARRIER WALL (SPECIAL) TRANSITION
TO PROPOSED PIER 2 (SN 016-1709)

NOTES:

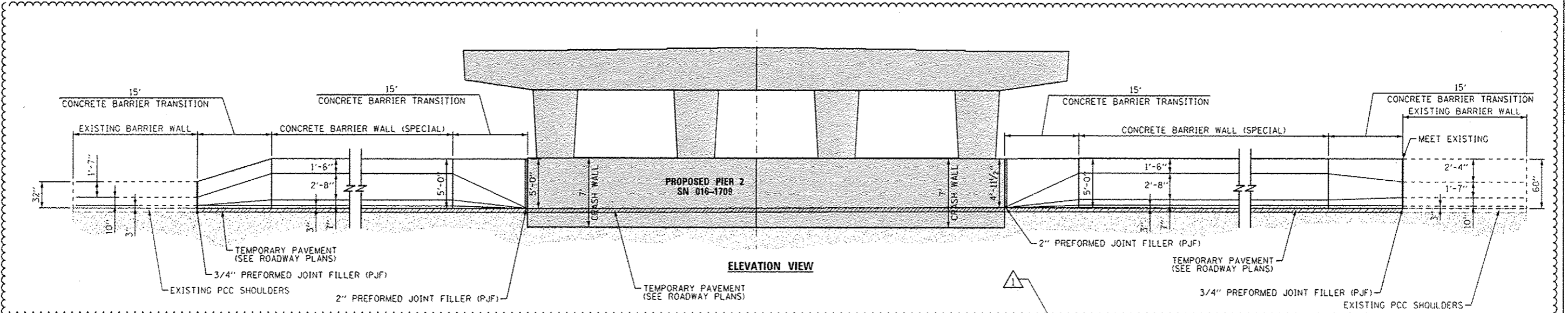
1. EXPANSION JOINTS SHOWN ON THIS DRAWING SHALL BE PERFORMED JOINT MATERIAL (BITUMINOUS TYPE) FILLER SHALL MEET AASHTO DESIGNATION M-33.
2. ALL WORK DETAILED HEREIN SHALL BE INCLUDED IN THE COST OF THE VARIOUS CONCRETE BARRIER PAY ITEMS UNLESS OTHERWISE NOTED.
3. PREFORMED JOINT FILLER SHALL BE INCLUDED IN THE COST OF THE CONCRETE BARRIER TRANSITION.
4. JOINTS SHALL BE CONSTRUCTED AS SHOWN ON THE PLANS AND IN ACCORDANCE WITH ARTICLE 637.08 OF THE STANDARD SPECIFICATIONS
5. TWO VERTICAL EPOXY COATED, NO. 8 TIE BARS, 10" LONG, SHALL BE PLACED AT EQUIDISTANT SPACING ALONG THE CONCRETE BARRIER TRANSITION. TIE BARS SHALL BE INCLUDED IN THE COST OF CONCRETE BARRIER TRANSITION.
6. HORIZONTAL TIE BARS SHALL BE NO. 6 EPOXY COATED, 24" LONG, 24" C-C AND SHALL BE INCLUDED IN THE COST OF THE BARRIER BASE.
7. SEE SHEET ROADWAY DETAILS SHEET 3 OF 9 FOR ADDITIONAL DETAILS



PLAN VIEW



PLAN VIEW



ELEVATION VIEW



D160W25-shc-Detail-02
 USER NAME: chun
 PLOT SCALE: 10.0000 1/16"
 PLOT DATE: 7/15/2013

DESIGNED - JWM/OPS
 DRAWN - JWM/OPS
 CHECKED - OBM
 DATE - 6/17/2013

REVISED - 7/19/2013
 REVISED -
 REVISED -
 REVISED -

STATE OF ILLINOIS
DEPARTMENT OF TRANSPORTATION

ROADWAY DETAILS

SCALE: N.T.S. SHEET 2 OF 9 SHEETS STA. TO STA.

F.A.I. RTE.	SECTION	COUNTY	TOTAL SHEETS	SHEET NO.
90/94/290	2013-007R	COOK	317	268
CONTRACT NO. 60W25			ILLINOIS FED. AID PROJECT	