

F.A.I. RTE.	SECTION	COUNTY	TOTAL SHEETS	SHEET NO.
90/94/290	2013-007R	COOK	317	1
ILLINOIS			CONTRACT NO. 60W25	

* 317-23-294

FOR INDEX OF SHEETS AND STANDARDS SEE SHEET NO. 2

STATE OF ILLINOIS
DEPARTMENT OF TRANSPORTATION
DIVISION OF HIGHWAYS

**PROPOSED
HIGHWAY PLANS**

FAI ROUTE 90/94
MORGAN STREET BRIDGE AT
I-290/CONGRESS PARKWAY (CIRCLE INTERCHANGE)
SECTION 2013-007R
RECONSTRUCTION, BRIDGE REPLACEMENT,
LIGHTING, TRAFFIC SIGNALS,
AND WATERMAIN PROJECT: NHPP-0005(941)
COOK COUNTY
C-91-227-13

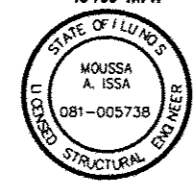


DESIGN DESIGNATIONS:
MORGAN STREET 4,000(2040) LOCAL STREET (URBAN)
I-290 EXIT RAMP 5,000(2040) INTERSTATE
WB I-290 92,000(2040) INTERSTATE
EB I-290 105,000(2040) INTERSTATE

POSTED /DESIGN SPEEDS:
30 /30 MPH
30 /30 MPH
45 /50 MPH
45 /50 MPH



Danny B. Manojlovski 5/14/13
DANNY B. MANOJLOVSKI DATE
LICENSE EXPIRES 11/30/2013
SHEET RANGE 1-86, 90-91, 93-115
267-317



Moussa A. Issa 5/14/13
MOUSSA A. ISSA DATE
LICENSE EXPIRES 11/30/2014
SHEET RANGE 116-121, 145-232



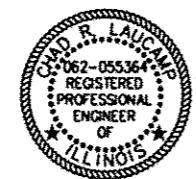
Anna Chiu 5/14/13
ANNA CHIU DATE
LICENSE EXPIRES 11/30/2013
SHEET RANGE 1-86, 90-91, 93-115
267-317



William D. Stermer 5/14/13
WILLIAM D. STERMER DATE
LICENSE EXPIRES 11/30/2013
SHEET RANGE 122-130, 141-144

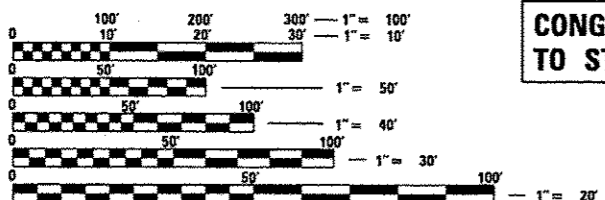


Christopher L. Krueger 5/14/13
CHRISTOPHER L. KRUEGER DATE
LICENSE EXPIRES 11/30/2013
SHEET RANGE 131-140



Chad B. Laucamp 5/14/13
CHAD B. LAUCAMP DATE
LICENSE EXPIRES 11/30/2013
SHEET RANGE 87-89

NPDES PERMIT INFORMATION	
NPDES Disturbed Area =	1.18 Acres
Approximate Location of Roadway is:	
Longitude	87° 39' 06.49" W
Latitude	41° 52' 32.05" N



FULL SIZE PLANS HAVE BEEN PREPARED USING STANDARD ENGINEERING SCALES. REDUCED SIZED PLANS WILL NOT CONFORM TO STANDARD SCALES. IN MAKING MEASUREMENTS ON REDUCED PLANS, THE ABOVE SCALES MAY BE USED.

C.U.A.N.
CHICAGO UTILITY ALERT NETWORK
1-312-744-7000

PROJECT ENGINEER: ADDIS ABEBAW
PROJECT MANAGER: BRIAN KUTTAB
CONTRACT NO. 60W25

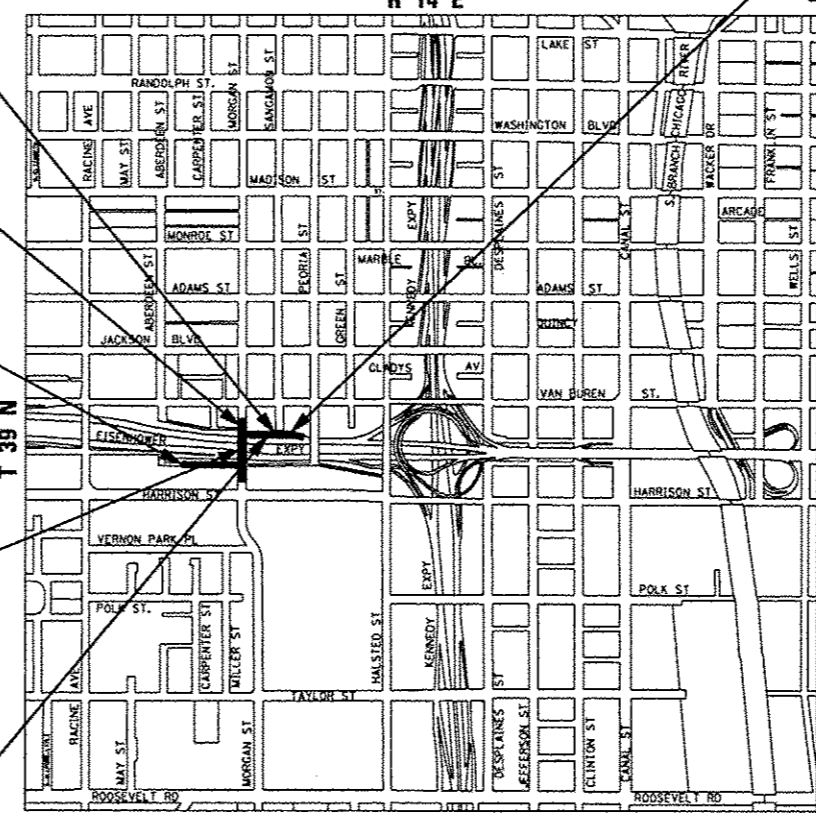
MORGAN STREET EXIT RAMP:
STA 1002+45.00 STA 1006+25.00

MORGAN STREET: STA 3601+95.00
TO STA 3606+60.00

CONGRESS PARKWAY: STA 3305+05.00
TO STA 3306+83.81

MORGAN STREET BRIDGE
SN 016-1709
STA 3603+28.39 TO
STA 3605+76.06

RETAINING WALL
SN 016-1724
STA 5248+93.99 TO
STA 5248+63.83



LOCATION MAP
THIS PROJECT IS LOCATED IN THE CITY OF CHICAGO
GROSS LENGTH = 1023.81 FT. (0.194 MILES)
NET LENGTH = 1023.81 FT. (0.194 MILES)

RETAINING WALL
SN 016-1725
STA 5248+27.20 TO
STA 5243+74.55



STATE OF ILLINOIS
DEPARTMENT OF TRANSPORTATION
DIVISION OF HIGHWAYS
SUBMITTED 5/9/13 2013
John D. Baranzelli, PE
DEPUTY DIRECTOR OF HIGHWAYS, REGION ENGINEER
June 28 2013
John D. Baranzelli, PE
ENGINEER OF DESIGN AND ENVIRONMENT
June 28 2013
Omer Osman, PE
DIRECTOR OF HIGHWAYS, CHIEF ENGINEER

PRINTED BY THE AUTHORITY
OF THE STATE OF ILLINOIS

DISTRICT 1 DESIGN /CONSULTANT SERVICES: BRIAN KUTTAB, P.E. (847)705-4431 SCHAUMBURG, ILLINOIS