

EXIST EB I-290 (EISENHOWER EXPY)				
POINT	DESCRIPTION	STATION	NORTHING	EASTING
POT		293+88.84	1,897,910.7311	1,165,300.7513
PC	IKE-EEB-00-1	314+72.13	1,897,974.3410	1,167,383.0682
PI	IKE-EEB-00-1	321+86.75	1,897,996.1608	1,168,097.3549
PT	IKE-EEB-00-1	329+00.55	1,897,958.6150	1,168,810.9878
PC	IKE-EEB-00-2	339+78.49	1,897,901.9806	1,169,887.4363
PI	IKE-EEB-00-2	341+00.95	1,897,895.5464	1,170,009.7311
PT	IKE-EEB-00-2	342+23.29	1,897,898.7017	1,170,132.1545
POT		344+82.35	1,897,905.3762	1,170,391.1241
PC	IKE-EEB-00-3	353+59.49	1,897,927.9756	1,171,267.9805
PI	IKE-EEB-00-3	354+82.42	1,897,931.1429	1,171,390.8707
PT	IKE-EEB-00-3	356+05.32	1,897,939.5781	1,171,513.5119
PC	IKE-EEB-00-4	356+51.86	1,897,942.7715	1,171,559.9401
PI	IKE-EEB-00-4	357+76.88	1,897,951.3501	1,171,684.6669
PT	IKE-EEB-00-4	359+01.86	1,897,954.4801	1,171,809.6491
POT		368+91.13	1,897,979.2472	1,172,798.6113

EXIST WB I-290 (EISENHOWER EXPY)				
POINT	DESCRIPTION	STATION	NORTHING	EASTING
POT		293+90.95	1,898,109.2305	1,165,314.6967
TS	IKE-EWB-00-1B	322+24.26	1,898,195.6075	1,168,146.6931
PIS	IKE-EWB-00-1B	323+57.62	1,898,199.6729	1,168,279.9836
SC	IKE-EWB-00-1	324+24.26	1,898,198.2148	1,168,346.6517
PI	IKE-EWB-00-1	325+38.06	1,898,195.7265	1,168,460.4198
CS	IKE-EWB-00-1	326+51.59	1,898,179.7466	1,168,573.0875
PIS	IKE-EWB-00-1A	327+18.26	1,898,170.3839	1,168,639.1010
ST	IKE-EWB-00-1A	328+51.56	1,898,144.7784	1,168,769.9517
TS	IKE-EWB-00-2B	329+78.32	1,898,120.4341	1,168,894.3575
PIS	IKE-EWB-00-2B	331+11.67	1,898,094.8247	1,169,025.2278
SC	IKE-EWB-00-2	331+78.32	1,898,085.4611	1,169,091.2512
PI	IKE-EWB-00-2	332+11.06	1,898,080.8638	1,169,123.6666
CS	IKE-EWB-00-2	332+43.79	1,898,077.3803	1,169,156.2204
PIS	IKE-EWB-00-2A	333+10.47	1,898,070.2861	1,169,222.5160
ST	IKE-EWB-00-2A	334+43.76	1,899,976.4284	1,169,359.4346
PC	IKE-EWB-00-3	338+11.32	1,898,043.1252	1,169,722.6716
PI	IKE-EWB-00-3	340+66.38	1,898,029.2947	1,169,977.3536
PT	IKE-EWB-00-3	343+21.10	1,898,038.1489	1,170,232.2572
TS	IKE-EWB-00-4B	352+47.24	1,898,070.2993	1,171,157.8387
PIS	IKE-EWB-00-4B	353+47.25	1,898,073.7709	1,171,257.7841
SC	IKE-EWB-00-4	353+97.24	1,898,073.8709	1,171,307.7891
PI	IKE-EWB-00-4	354+73.38	1,898,074.0231	1,171,383.9319
CS	IKE-EWB-00-4	355+49.47	1,898,069.1215	1,171,459.9169
PIS	IKE-EWB-00-4A	355+99.47	1,898,065.9031	1,171,509.8083
ST	IKE-EWB-00-4A	356+99.44	1,898,056.2063	1,171,609.3226
TS	IKE-EWB-00-5B	359+16.74	1,898,035.1324	1,171,825.5961
PIS	IKE-EWB-00-5B	360+16.74	1,898,025.4337	1,171,925.1303
SC	IKE-EWB-00-5	360+66.74	1,898,022.2149	1,171,975.0317
PI	IKE-EWB-00-5	361+31.77	1,898,018.0288	1,172,039.9323
CS	IKE-EWB-00-5	361+96.78	1,898,017.5295	1,172,104.9659
PIS	IKE-EWB-00-5A	362+46.77	1,898,017.1456	1,172,154.9595
ST	IKE-EWB-00-5A	363+46.75	1,898,019.6488	1,172,254.9138
POT		368+89.26	1,898,033.2310	1,172,797.2593

EXIST SW RAMP				
POINT	DESCRIPTION	STATION	NORTHING	EASTING
PC	CIR-ESW-00-1	13+90.03	1,898,782.0096	1,171,425.7159
PI	CIR-ESW-00-1	16+45.46	1,898,527.0935	1,171,441.8766
PCC	CIR-ESW-00-1/CIR-ESW-00-2	18+74.16	1,898,335.8773	1,171,272.5256
PI	CIR-ESW-00-2	20+08.60	1,898,235.2352	1,171,183.3917
PCC	CIR-ESW-00-2/CIR-ESW-00-3	21+41.29	1,898,163.1121	1,171,069.9371
PI	CIR-ESW-00-3	22+38.85	1,898,110.7700	1,170,987.5993
PT	CIR-ESW-00-3	23+33.05	1,898,099.8530	1,170,890.6455

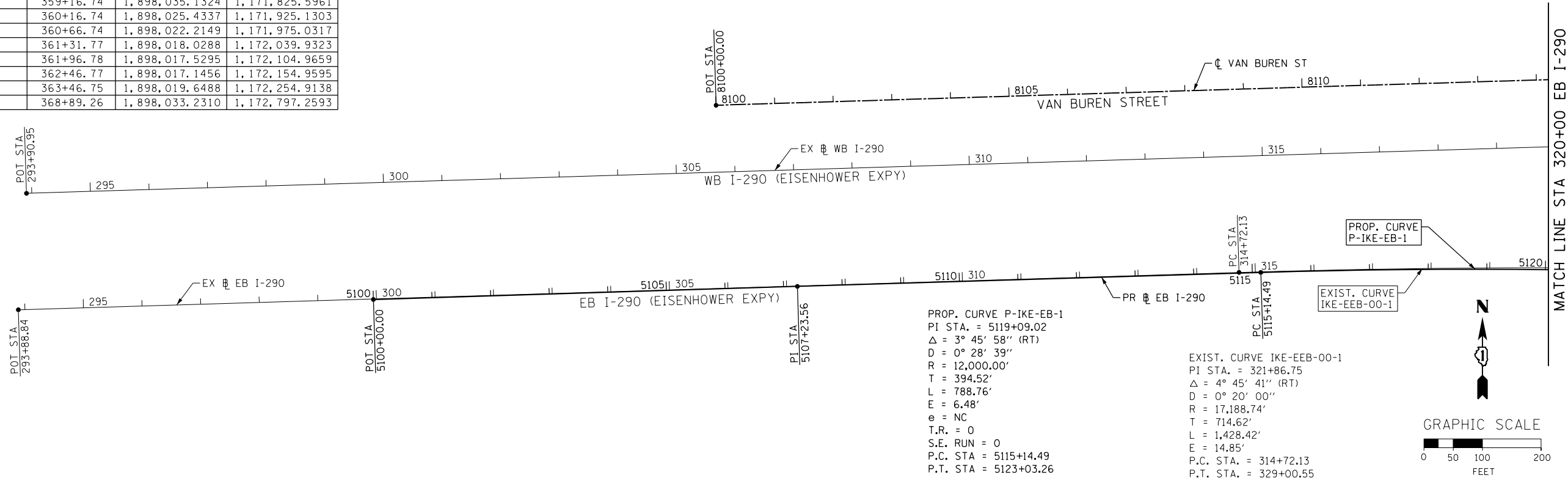
EXIST NW RAMP				
POINT	DESCRIPTION	STATION	NORTHING	EASTING
POT		7+96.20	1,897,507.4719	1,171,763.3763
PC	CIR-ENW-00-1	9+85.04	1,897,693.9515	1,171,733.5850
PI	CIR-ENW-00-1	10+35.96	1,897,744.2285	1,171,725.5529
PT	CIR-ENW-00-1	10+85.49	1,897,793.6250	1,171,737.8925
PC	CIR-ENW-00-2	12+39.06	1,897,942.6154	1,171,775.1112
PI	CIR-ENW-00-2	23+51.29	1,899,021.6848	1,172,044.6691
PT	CIR-ENW-00-2	20+73.26	1,898,256.1989	1,171,237.7716
PC	CIR-ENW-00-3	21+70.03	1,898,189.5975	1,171,167.5671
PI	CIR-ENW-00-3	22+66.58	1,898,123.1471	1,171,097.5218
PT	CIR-ENW-00-3	23+56.35	1,898,112.3438	1,171,001.5775
POT		29+69.88	1,898,043.6940	1,170,391.8959

PROP CONGRESS PARKWAY STREET				
POINT	DESCRIPTION	STATION	NORTHING	EASTING
POT		3300+00.00	1,897,801.3292	1,169,169.5572
PC	P-CON-CL-1	3304+40.44	1,897,815.0282	1,169,609.7826
PI	P-CON-CL-1	3304+84.64	1,897,816.4031	1,169,653.9674
PT	P-CON-CL-1	3305+28.84	1,897,816.5297	1,169,698.1734
POT		3306+83.81	1,897,816.9734	1,169,853.1406

PROP VAN BUREN STREET				
POINT	DESCRIPTION	STATION	NORTHING	EASTING
POT		8100+00.00	1,898,259.3220	1,166,490.9835
PI		8125+63.42	1,898,338.2206	1,169,053.1845
PI		8146+24.60	1,898,397.0221	1,171,113.5263
POT		8171+35.75	1,898,460.2841	1,173,623.8877

PROP MORGAN STREET				
POINT	DESCRIPTION	STATION	NORTHING	EASTING
POT		3600+00.00	1,897,514.6666	1,169,861.4881
POT		3618+77.63	1,899,391.6120	1,169,810.8410

PROP TILDEN ST				
POINT	DESCRIPTION	STATION	NORTHING	EASTING
POT		3000+00.00	1,898,138.2833	1,169,651.0438
POT		3001+93.55	1,898,143.5041	1,169,844.5197



FILE PATH = p:\388035\pmt\1\ecommon\me\local\p\AECOM\00\Documents\01\Americas\Transportation\60269938_Circle\Phase\I\000_CAD\005_Roadway\Sheets\60W25_Sht-ATB-01.dgn



D:\60W25-Sht-ATB-01.dgn
 USER NAME = chitua
 PLOT SCALE = 200.0000' / in.
 PLOT DATE = 6/13/2013

DESIGNED - AFC	REVISED -
DRAWN - PHP	REVISED -
CHECKED - DBM	REVISED -
DATE - 6/17/2013	REVISED -

STATE OF ILLINOIS
DEPARTMENT OF TRANSPORTATION

ALIGNMENT, TIES AND BENCHMARKS

SCALE: 1" = 100' SHEET 1 OF 4 SHEETS STA. TO STA.

F.A.I. RTE.	SECTION	COUNTY	TOTAL SHEETS	SHEET NO.
90/94/290	2013-007R	COOK	317	38
CONTRACT NO. 60W25				
ILLINOIS FED. AID PROJECT				