

PROP. CURVE P-IKE-WB-4  
 PI STA. = 5263+60.11  
 $\Delta = 9^\circ 46' 06''$  (LT)  
 $D = 3^\circ 15' 47''$   
 $R = 1,755.93'$   
 $T = 150.05'$   
 $L = 299.37'$   
 $E = 6.40'$   
 $e = 4.80\%$   
 $T.R. = 72$   
 $S.E. RUN = 173$   
 $P.C. STA = 5262+10.06$   
 $P.T. STA = 5265+09.43$

PROP. CURVE P-IKE-EB-2  
 PI STA. = 5130+28.02  
 $\Delta = 1^\circ 34' 49''$  (RT)  
 $D = 0^\circ 22' 55''$   
 $R = 15,000.00'$   
 $T = 206.87'$   
 $L = 413.72'$   
 $E = 1.43'$   
 $e = NC$   
 $T.R. = 0$   
 $S.E. RUN = 0$   
 $P.C. STA = 5128+21.14$   
 $P.T. STA = 5132+34.87$

PROP. CURVE P-IKE-WB-3  
 PI STA. = 5251+25.31  
 $\Delta = 9^\circ 58' 24''$  (RT)  
 $D = 0^\circ 53' 03''$   
 $R = 6,480.00'$   
 $T = 565.40'$   
 $L = 1,127.95'$   
 $E = 24.62'$   
 $e = 2.00\%$   
 $T.R. = 72$   
 $S.E. RUN = 72$   
 $P.C. STA = 5245+59.91$   
 $P.T. STA = 5256+87.86$

PROP. CURVE P-IKE-EB-3  
 PI STA. = 5140+57.13  
 $\Delta = 5^\circ 07' 22''$  (LT)  
 $D = 1^\circ 00' 19''$   
 $R = 5,700.00'$   
 $T = 254.99'$   
 $L = 509.63'$   
 $E = 5.70'$   
 $e = 2.00\%$   
 $T.R. = 96$   
 $S.E. RUN = 96$   
 $P.C. STA = 5138+02.14$   
 $P.T. STA = 5143+11.78$

EXIST. CURVE E-MOR-WX-2  
 PI STA. = 1002+95.38  
 $\Delta = 6^\circ 07' 41''$  (LT)  
 $D = 4^\circ 46' 29''$   
 $R = 1,200.00'$   
 $T = 64.23'$   
 $L = 128.35'$   
 $E = 1.72'$   
 $P.C. STA. = 1002+31.14$   
 $P.T. STA. = 1003+59.49$

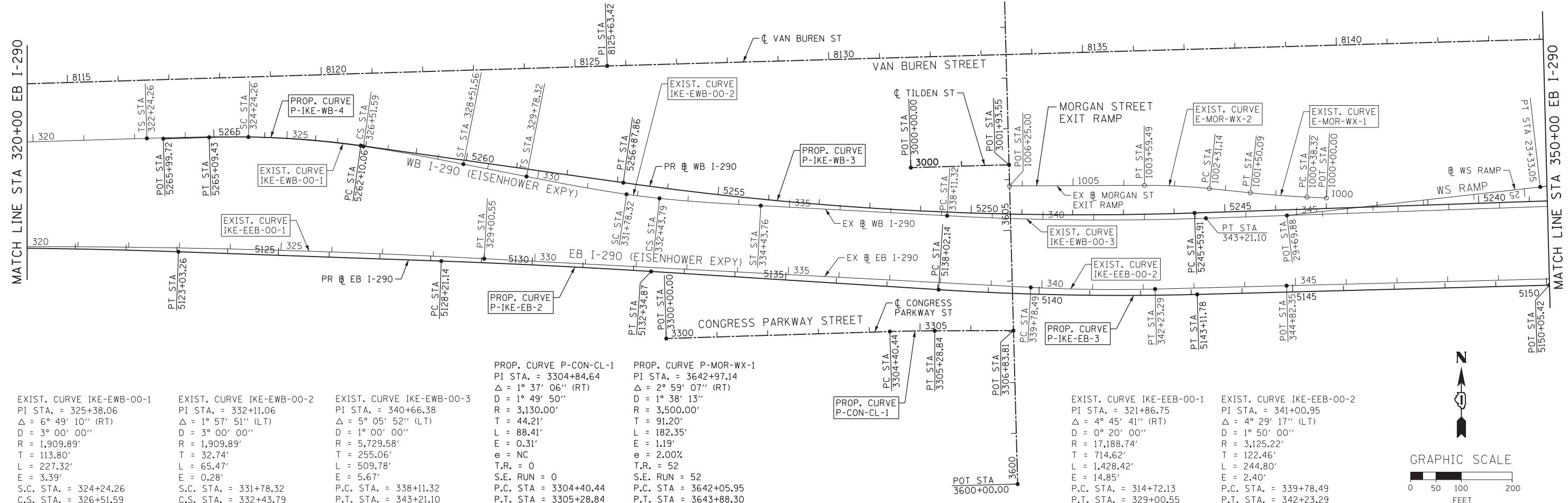
EXIST. CURVE E-MOR-WX-1  
 PI STA. = 1000+94.22  
 $\Delta = 3^\circ 12' 07''$  (RT)  
 $D = 2^\circ 51' 53''$   
 $R = 2,000.00'$   
 $T = 55.90'$   
 $L = 111.77'$   
 $E = 0.78'$   
 $P.C. STA. = 1000+38.32$   
 $P.T. STA. = 1001+50.09$

POT STA  
 3618+77.63

PROP EB I-290 (EISENHOWER EXPY)				
POINT	DESCRIPTION	STATION	NORTHING	EASTING
POT		5100+00.00	1,897,928.2153	1,165,906.4674
PI		5107+23.56	1,897,950.5266	1,166,629.6866
PC	P-IKE-EB-1	5115+14.49	1,897,974.3695	1,167,420.2568
PI	P-IKE-EB-1	5119+09.02	1,897,986.2626	1,167,814.6020
PT	P-IKE-EB-1	5123+03.26	1,897,972.2282	1,168,208.8767
PC	P-IKE-EB-2	5128+21.14	1,897,953.8054	1,168,726.4354
PI	P-IKE-EB-2	5130+28.02	1,897,946.4462	1,168,933.1791
PT	P-IKE-EB-2	5132+34.87	1,897,933.3883	1,169,139.6412
PC	P-IKE-EB-3	5138+02.14	1,897,897.5818	1,169,705.7862
PI	P-IKE-EB-3	5140+57.13	1,897,881.4871	1,169,960.2646
PT	P-IKE-EB-3	5143+11.78	1,897,888.1790	1,170,215.1636
POT		5150+05.42	1,897,906.3832	1,170,908.5632

PROP WB I-290 (EISENHOWER EXPY)				
POINT	DESCRIPTION	STATION	NORTHING	EASTING
POT		5215+00.00	1,898,046.8334	1,173,265.8951
PI		5216+49.89	1,898,043.3094	1,173,116.0463
PI		5220+30.18	1,898,044.3689	1,172,735.7617
PC	P-IKE-WB-1	5226+71.97	1,898,029.2799	1,172,094.1494
PI	P-IKE-WB-1	5227+86.73	1,898,026.5817	1,171,979.4161
PT	P-IKE-WB-1	5229+01.11	1,898,040.0852	1,171,865.4483
PC	P-IKE-WB-2	5232+03.48	1,898,075.6623	1,171,565.1834
PI	P-IKE-WB-2	5233+29.54	1,898,090.4946	1,171,440.0019
PT	P-IKE-WB-2	5234+55.11	1,898,086.2077	1,171,314.0176
POT		5236+12.75	1,898,080.8467	1,171,156.4660
PC	P-IKE-WB-3	5245+59.91	1,898,048.6362	1,170,209.8549
PI	P-IKE-WB-3	5251+25.31	1,898,029.4083	1,169,644.7800
PT	P-IKE-WB-3	5256+87.86	1,898,108.3353	1,169,084.9140
PC	P-IKE-WB-4	5262+10.06	1,898,181.2324	1,168,567.8210
PI	P-IKE-WB-4	5263+60.11	1,898,202.1781	1,168,419.2431
PT	P-IKE-WB-4	5265+09.43	1,898,197.6118	1,168,269.2656
POT		5265+99.72	1,898,194.8639	1,168,179.0128

MORGAN ST EXIT RAMP				
POINT	DESCRIPTION	STATION	NORTHING	EASTING
POT		1000+00.00	1,898,078.1074	1,170,469.6168
PC	E-MOR-WX-1	1000+38.32	1,898,079.9143	1,170,431.3371
PI	E-MOR-WX-1	1000+94.22	1,898,082.5499	1,170,375.5020
PT	E-MOR-WX-1	1001+50.09	1,898,088.3000	1,170,319.9012
PC	E-MOR-WX-2	1002+31.14	1,898,096.6382	1,170,239.2743
PI	E-MOR-WX-2	1002+95.38	1,898,103.2459	1,170,175.3811
PT	E-MOR-WX-2	1003+59.49	1,898,102.9951	1,170,111.1477
POT		1006+25.00	1,898,101.9587	1,169,845.6407



EXIST. CURVE IKE-EWB-00-1  
 PI STA. = 325+38.06  
 $\Delta = 6^\circ 49' 10''$  (RT)  
 $D = 3^\circ 00' 00''$   
 $R = 1,909.89'$   
 $T = 113.80'$   
 $L = 227.32'$   
 $E = 3.39'$   
 $S.C. STA. = 324+24.26$   
 $C.S. STA. = 326+51.59$

EXIST. CURVE IKE-EWB-00-2  
 PI STA. = 332+11.06  
 $\Delta = 1^\circ 57' 51''$  (LT)  
 $D = 3^\circ 00' 00''$   
 $R = 1,909.89'$   
 $T = 32.74'$   
 $L = 65.47'$   
 $E = 0.28'$   
 $S.C. STA. = 331+78.32$   
 $C.S. STA. = 332+43.79$

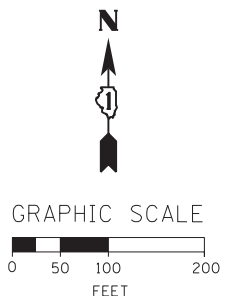
EXIST. CURVE IKE-EWB-00-3  
 PI STA. = 340+66.38  
 $\Delta = 5^\circ 05' 52''$  (LT)  
 $D = 1^\circ 00' 00''$   
 $R = 5,729.58'$   
 $T = 255.06'$   
 $L = 509.78'$   
 $E = 5.67'$   
 $P.C. STA. = 338+11.32$   
 $P.T. STA. = 343+21.10$

PROP. CURVE P-CON-CL-1  
 PI STA. = 3304+84.64  
 $\Delta = 1^\circ 37' 06''$  (RT)  
 $D = 1^\circ 49' 50''$   
 $R = 3,130.00'$   
 $T = 44.21'$   
 $L = 88.41'$   
 $E = 0.31'$   
 $e = NC$   
 $T.R. = 0$   
 $S.E. RUN = 0$   
 $P.C. STA = 3304+40.44$   
 $P.T. STA = 3305+28.84$

PROP. CURVE P-MOR-WX-1  
 PI STA. = 3642+97.14  
 $\Delta = 2^\circ 59' 07''$  (RT)  
 $D = 1^\circ 38' 13''$   
 $R = 3,500.00'$   
 $T = 91.20'$   
 $L = 182.35'$   
 $E = 1.19'$   
 $e = 2.00\%$   
 $T.R. = 52$   
 $S.E. RUN = 52$   
 $P.C. STA = 3642+05.95$   
 $P.T. STA = 3643+88.30$

EXIST. CURVE IKE-EEB-00-1  
 PI STA. = 321+86.75  
 $\Delta = 4^\circ 45' 41''$  (RT)  
 $D = 0^\circ 20' 00''$   
 $R = 17,188.74'$   
 $T = 714.62'$   
 $L = 1,428.42'$   
 $E = 14.85'$   
 $P.C. STA. = 314+72.13$   
 $P.T. STA. = 329+00.55$

EXIST. CURVE IKE-EEB-00-2  
 PI STA. = 341+00.95  
 $\Delta = 4^\circ 29' 17''$  (LT)  
 $D = 1^\circ 50' 00''$   
 $R = 3,125.22'$   
 $T = 122.46'$   
 $L = 244.80'$   
 $E = 2.40'$   
 $P.C. STA. = 339+78.49$   
 $P.T. STA. = 342+23.29$



FILE PATH = p:\388935\pml\escom\line\local\p\wec\000\Documents\01\_Americas\Transportation\62629938\_Circle\Phase\_1\000\_CAD\006\_Roadway\Sheets\60W25-Sht-ATB-02.dgn



D160W25-Sht-ATB-02.dgn
USER NAME = chitua
PLOT SCALE = 100.0000' / in.
PLOT DATE = 6/13/2013

DESIGNED - AFC	REVISED -
DRAWN - PHP	REVISED -
CHECKED - DBM	REVISED -
DATE - 6/17/2013	REVISED -

**STATE OF ILLINOIS**  
**DEPARTMENT OF TRANSPORTATION**

ALIGNMENT, TIES AND BENCHMARKS	
SCALE: 1" = 100'	SHEET 2 OF 4 SHEETS
STA.	TO STA.

F.A.I. R.E. 90/94/290	SECTION 2013-007R	COUNTY COOK	TOTAL SHEETS 317	SHEET NO. 39
CONTRACT NO. 60W25				
ILLINOIS FED. AID PROJECT				