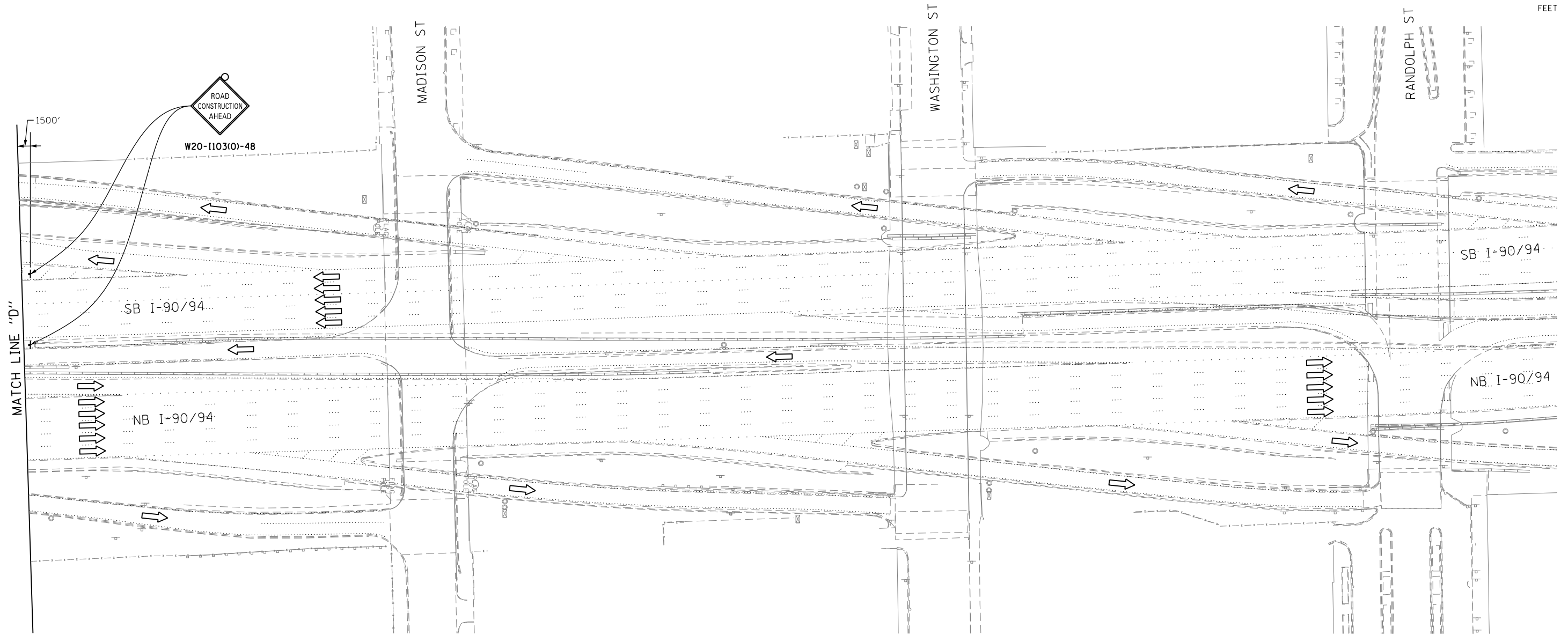
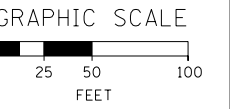
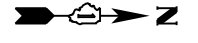


NOTE:  
UNLESS NOTED OTHERWISE, ALL STATIONS AND OFFSETS USED  
ARE TAKEN FROM EITHER EXISTING EB AND WB I-290 BASELINES



FILE PATH = p:\388035\pmt\escomon\line\local\AECOM\Documents\01\_Americas\Transportation\60269938\_Circle\Phase\_1\000\_CAD\005\_Roadway\Sheets\60W25\_Sht-Staging-07



DI60W25-Sht-Staging-07  
USER NAME = potelp2  
PLOT SCALE = 50.0000' / in.  
PLOT DATE = 5/15/2013

DESIGNED - OPS	REVISED -
DRAWN - PHP	REVISED -
CHECKED - DBM	REVISED -
DATE - 5/14/2013	REVISED -

**STATE OF ILLINOIS  
DEPARTMENT OF TRANSPORTATION**

**SUGGESTED STAGES OF CONSTRUCTION AND TRAFFIC CONTROL  
STAGE 1**

SCALE: 1" = 50'    SHEET 7 OF 7 SHEETS    STA.                    TO STA.

F.A.I. RTE.	SECTION	COUNTY	TOTAL SHEETS	SHEET NO.
90/94/290	2013-007R	COOK	317	62
CONTRACT NO. 60W25				
ILLINOIS FED. AID PROJECT				