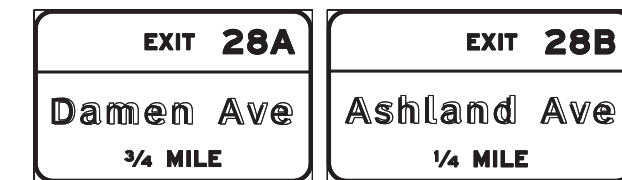
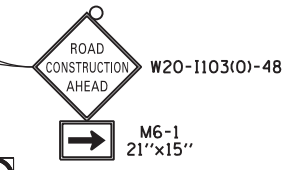
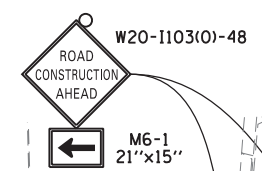
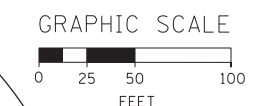
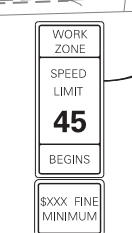
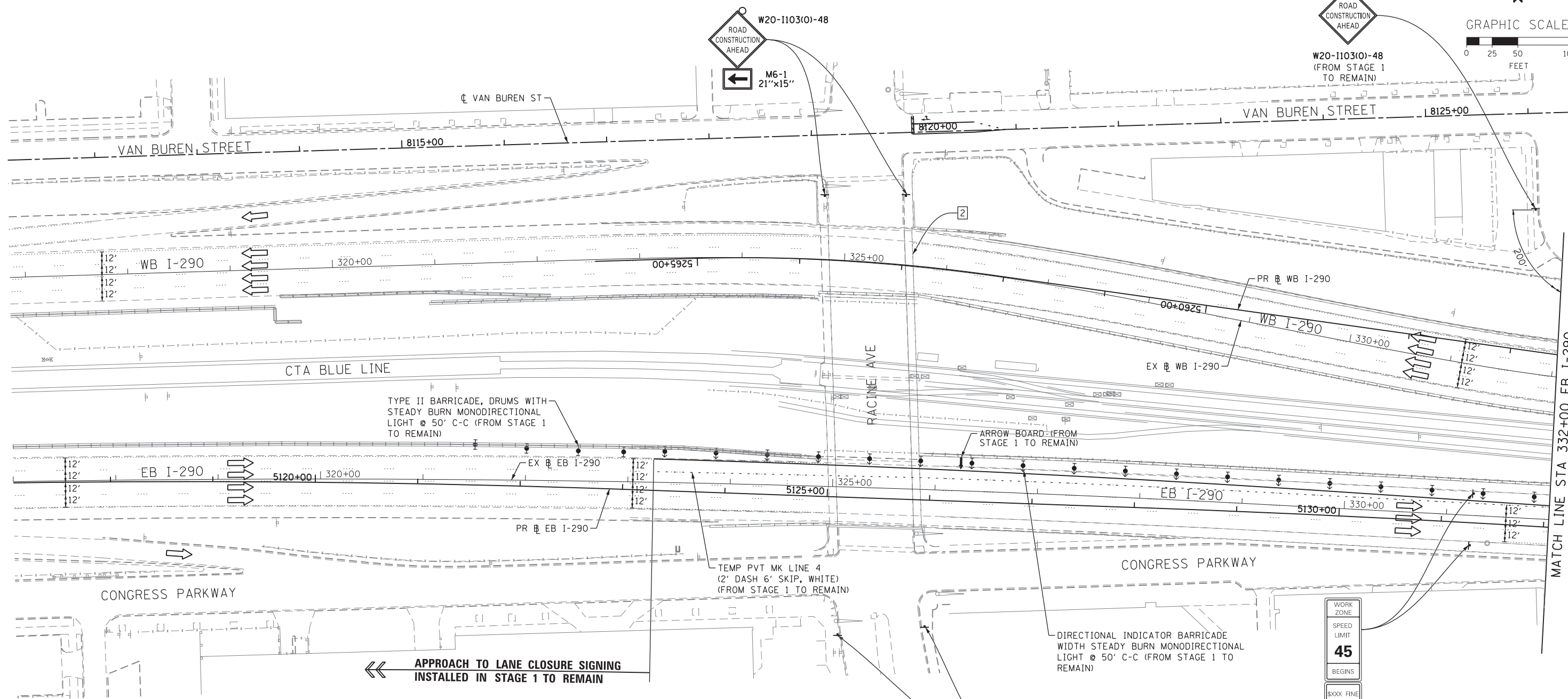


NOTE:
UNLESS NOTED OTHERWISE, ALL STATIONS AND OFFSETS USED
ARE TAKEN FROM EITHER EXISTING EB AND WB I-290 BASELINES



2 INSTALLED PREVIOUSLY IN STAGE 1 TO REMAIN



W2-1115(O)-3618
R2-1-3648
R10-190P-3618
R2-1106-3618
(FROM STAGE 1 TO REMAIN)

FILE PATH = ...\388039-par\1\escomon\line\local\PAE\CD\000\Documents\01_Americas\Transportation\60269938_Circle\Phase_1\000_CD\005_Roadway\Sheets\60W25-Sht-Staging-01



D160W25-Sht-Staging2-01
USER NAME = potelp2
PLOT SCALE = 50.0000' / in.
PLOT DATE = 6/11/2013

DESIGNED - OPS	REVISED -
DRAWN - PHP	REVISED -
CHECKED - DBM	REVISED -
DATE - 6/17/2013	REVISED -

STATE OF ILLINOIS
DEPARTMENT OF TRANSPORTATION

SUGGESTED STAGES OF CONSTRUCTION AND TRAFFIC CONTROL
STAGE 2
SCALE: 1" = 50' SHEET 1 OF 7 SHEETS STA. TO STA.

F.A.I. RTE. 90/94/290	SECTION 2013-007R	COUNTY COOK	TOTAL SHEETS 317	SHEET NO. 63
CONTRACT NO. 60W25			ILLINOIS FED. AID PROJECT	