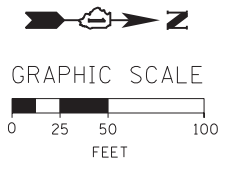


NOTE:  
UNLESS NOTED OTHERWISE, ALL STATIONS AND OFFSETS USED  
ARE TAKEN FROM EITHER EXISTING EB AND WB I-290 BASELINES



W20-110310)-48  
(FROM STAGE 1 TO REMAIN)

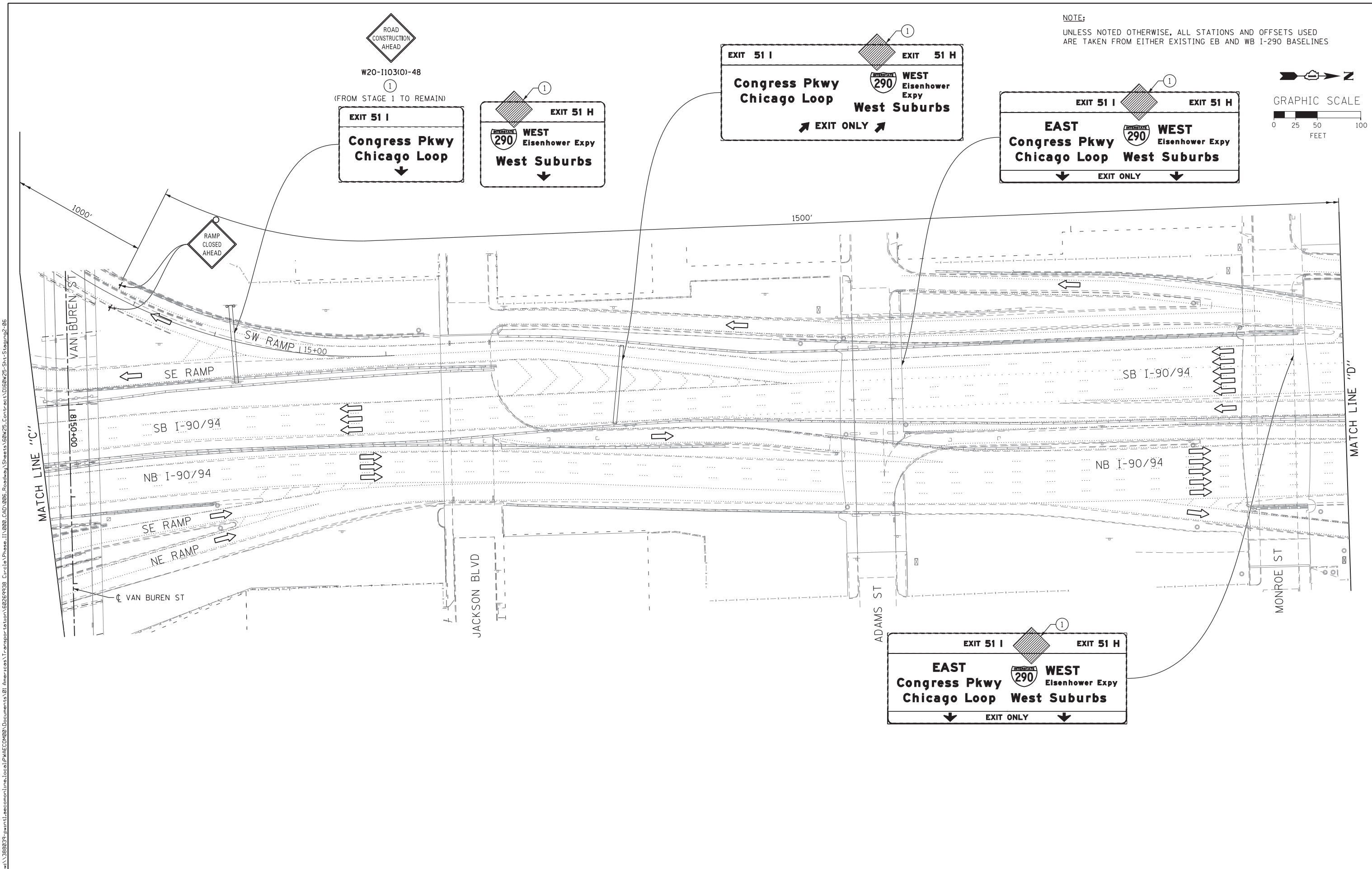
EXIT 51 I  
**Congress Pkwy  
Chicago Loop**  
↓

EXIT 51 H  
**WEST  
Eisenhower Expy  
West Suburbs**  
↓

EXIT 51 I EXIT 51 H  
**Congress Pkwy  
Chicago Loop** **WEST  
Eisenhower Expy  
West Suburbs**  
↗ EXIT ONLY ↖

EXIT 51 I EXIT 51 H  
**EAST  
Congress Pkwy  
Chicago Loop** **WEST  
Eisenhower Expy  
West Suburbs**  
↓ EXIT ONLY ↓

EXIT 51 I EXIT 51 H  
**EAST  
Congress Pkwy  
Chicago Loop** **WEST  
Eisenhower Expy  
West Suburbs**  
↓ EXIT ONLY ↓



FILE PATH = ...



D160W25-Sht-Staging2-06  
USER NAME = pimserno  
PLOT SCALE = 50.0000' / in.  
PLOT DATE = 6/14/2013

DESIGNED - OPS	REVISED -
DRAWN - PHP	REVISED -
CHECKED - DBM	REVISED -
DATE - 6/17/2013	REVISED -

STATE OF ILLINOIS  
DEPARTMENT OF TRANSPORTATION

SUGGESTED STAGES OF CONSTRUCTION AND TRAFFIC CONTROL  
STAGE 2

SCALE: 1" = 50'	SHEET 6 OF 7 SHEETS	STA.	TO STA.
-----------------	---------------------	------	---------

F.A.I. RTE. 90/94/290	SECTION 2013-007R	COUNTY COOK	TOTAL SHEETS 317	SHEET NO. 68
CONTRACT NO. 60W25				ILLINOIS FED. AID PROJECT