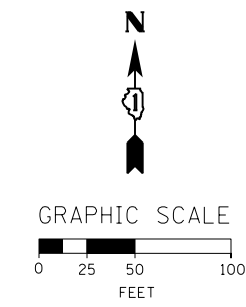


SIGNING NOTES

1. SEE SIGN SCHEDULE FOR SIGN PANEL AND MOUNTING INFORMATION.
2. BEFORE BEGINNING ANY WORK, THE CONTRACTOR SHALL RECORD AND RETAIN ALL EXISTING SIGN INFORMATION FOR FUTURE REFERENCE. EXACT LOCATIONS OF ALL SIGNS SHALL BE DIRECTED BY THE ENGINEER.

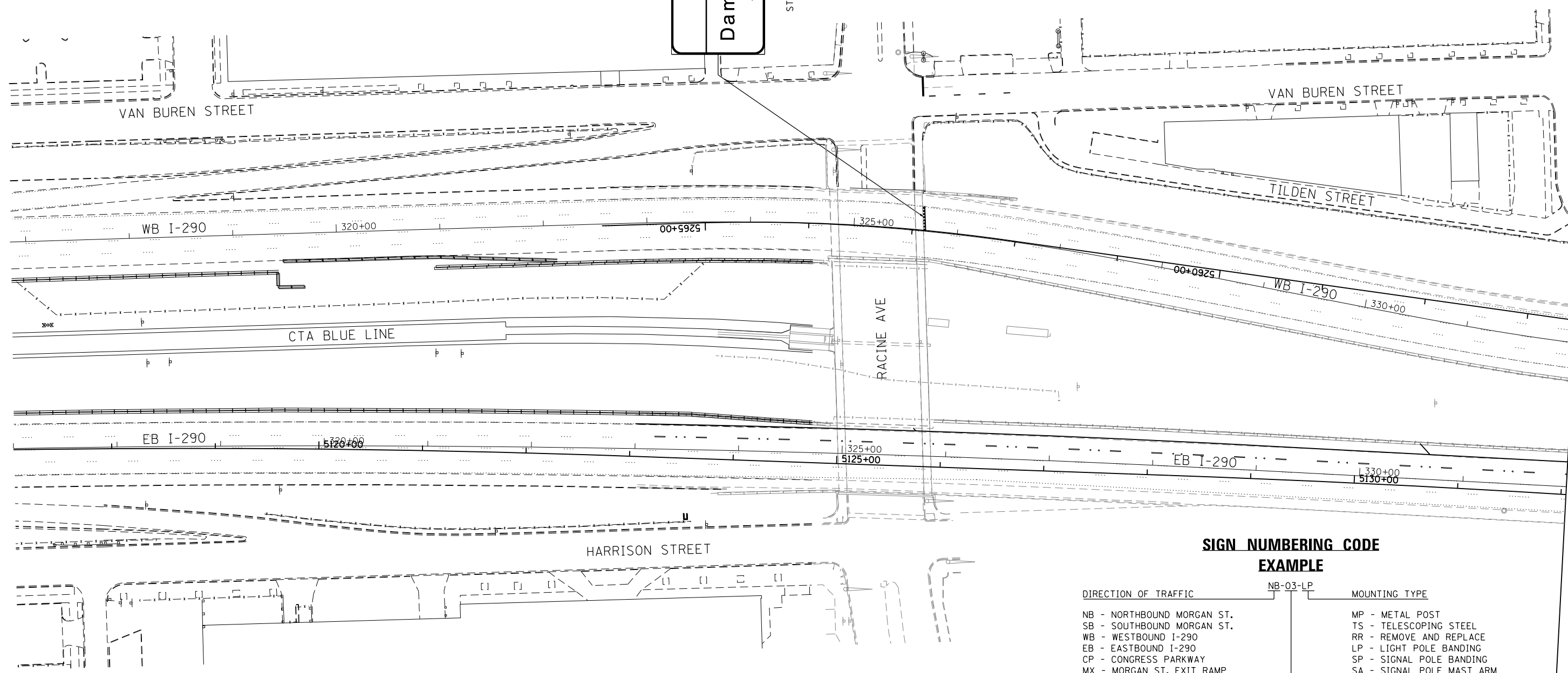


EXIT 28B
Ashland Ave
1/4 MILE

WB-06-BM
STA. 325+65.06

EXIT 28A
Damen Ave
3/4 MILE

WB-05-BM
STA. 325+68.62



SIGN NUMBERING CODE EXAMPLE

DIRECTION OF TRAFFIC	MOUNTING TYPE
NB - NORTHBOUND MORGAN ST.	MP - METAL POST
SB - SOUTHBOUND MORGAN ST.	TS - TELESCOPING STEEL
WB - WESTBOUND I-290	RR - REMOVE AND REPLACE
EB - EASTBOUND I-290	LP - LIGHT POLE BANDING
CP - CONGRESS PARKWAY	SP - SIGNAL POLE BANDING
MX - MORGAN ST. EXIT RAMP	SA - SIGNAL POLE MAST ARM
	BM - BRIDGE MOUNTED

SIGN PANEL NUMBER

MATCH LINE STA 332+00 EB I-290

FILE PATH = p:\388035\pmt\escom\line\local\p\AECOM\00\Documents\01_Americas\Transportation\62629938_Circle\Phase_1\000_CAD\006_Roadway_Sheets\60W25_Contract\0160W25-sht-Pmk-Sign-02a



DI60W25-sht-Pmk-Sign-02a
USER NAME = CzosnykoB
PLOT SCALE = 50.0000' / in.
PLOT DATE = 5/15/2013

DESIGNED - BMC
DRAWN - BMC
CHECKED - AFC
DATE - 5/14/2013

REVISED -
REVISED -
REVISED -
REVISED -

**STATE OF ILLINOIS
DEPARTMENT OF TRANSPORTATION**

**SIGNING PLANS
INTERSTATE AND RAMPS**

SCALE: 1" = 50' SHEET 2 OF 3 SHEETS STA. TO STA.

F.A.I. RTE.	SECTION	COUNTY	TOTAL SHEETS	SHEET NO.
90/94/290	2013-007R	COOK	317	111A
CONTRACT NO. 60W25				
ILLINOIS FED. AID PROJECT				