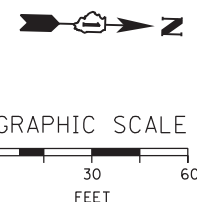
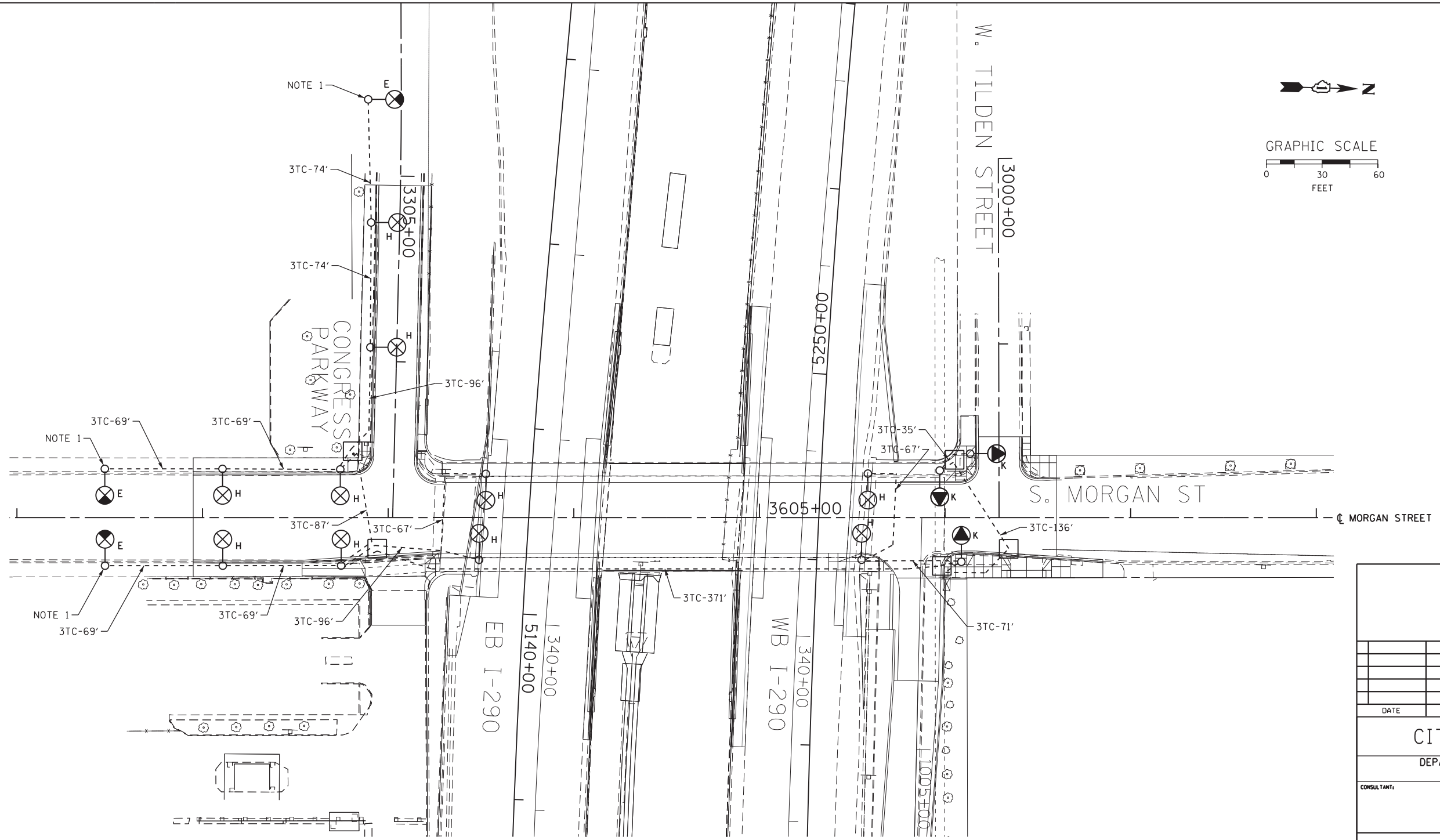


c:\pwworking\aecom\myer.sc\d0207894\DIG0W25-sht-Light-08.dgn 6/14/2013 8:40:02 AM



**NOTES:**

1. SPLICE NEW CABLES TO EXISTING LIGHTING CIRCUITS LOCATED IN EXISTING POLE.

"H" INSTALL CDOT FURNISHED STEEL POLE, LUMINAIRE, MAST ARM AND BALLAST HOUSING BASE PER DRAWING NOS. 808 AND 785.  
 "K" REINSTALL MAST ARM AND LUMINAIRE ON A RELOCATED TRAFFIC SIGNAL/LIGHT COMBINATION POLE. SEE TRAFFIC SIGNAL PLANS FOR POLE LOCATIONS.

FOR CONDUIT AND FOUNDATION PLANS SEE DRAWING NO. E-07.  
 FOR LIGHTING REMOVAL PLANS SEE DRAWING NO. E-09.

DATE	REVISION
<b>CITY OF CHICAGO</b>	
DEPARTMENT OF TRANSPORTATION DIVISION OF ENGINEERING	
CONSULTANT:  <small>303 EAST WACKER DRIVE, SUITE 1400 CHICAGO, IL 60601-5276 PHONE: (312) 373-7700 FAX: (312) 373-6800</small>	
WORK ORDER NO. _____	DATE _____
COST ALLOCATION ACCOUNT _____	
APPROPRIATION ACCOUNT _____	MATERIAL _____ LABOR _____
<b>MORGAN STREET LIGHTING CABLE AND EQUIPMENT INSTALLATION PLAN</b>	
CITY OF CHICAGO DEPT. OF TRANSPORTATION DIVISION OF ELECTRICAL OPERATIONS	
DRAFTSMAN: CAM	ENGINEER: WDS
SUPERVISING ENGINEER: JPC	ELEC. DESIGN ENGR.
ENGINEER OF ELECTRICITY:	
GEN'L SUPT. OF ELECTRICITY:	
DEPUTY COMMISSIONER:	
SIZE: 22"   34"	SCALE: 1" = 30'
DATE: 6/17/2013	DATE:
C.D.O.T. PROJECT NO.:	DWG. NO.: 8 OF 11

E-08