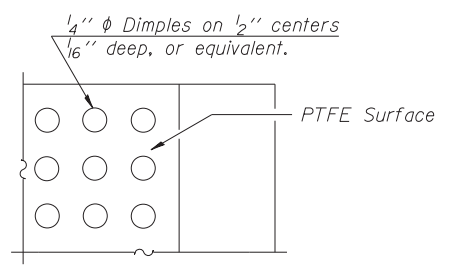
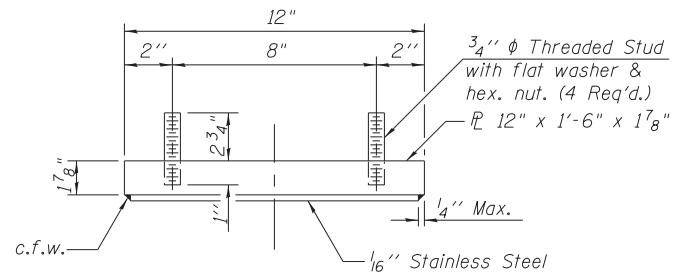
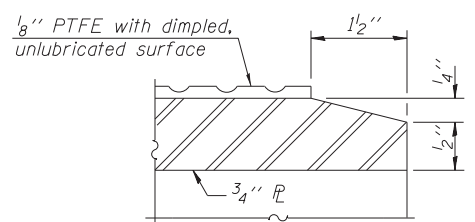
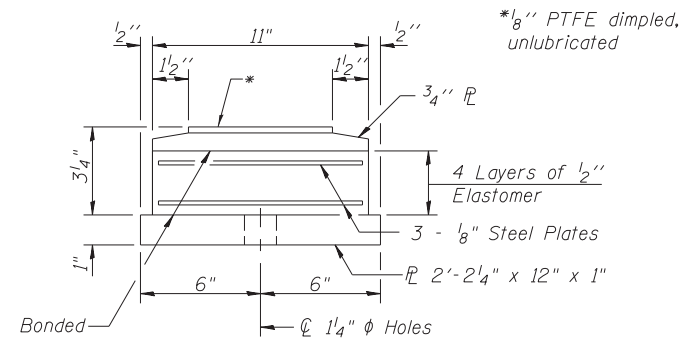


**TYPE II ELASTOMERIC EXP. BRG. AT SOUTH ABUTMENT**



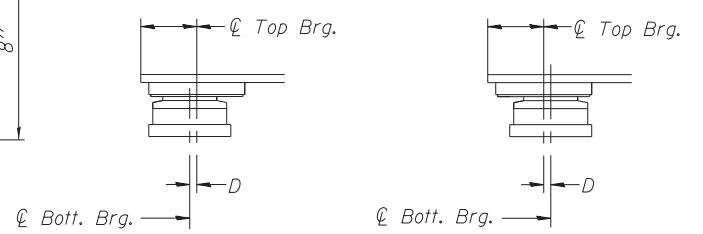
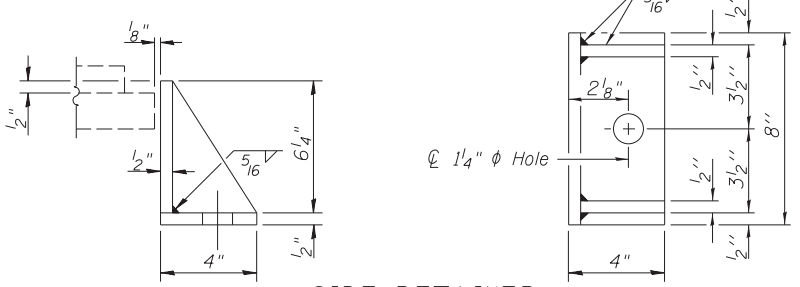
**TOP BEARING ASSEMBLY**

**PLAN-PTFE SURFACE**



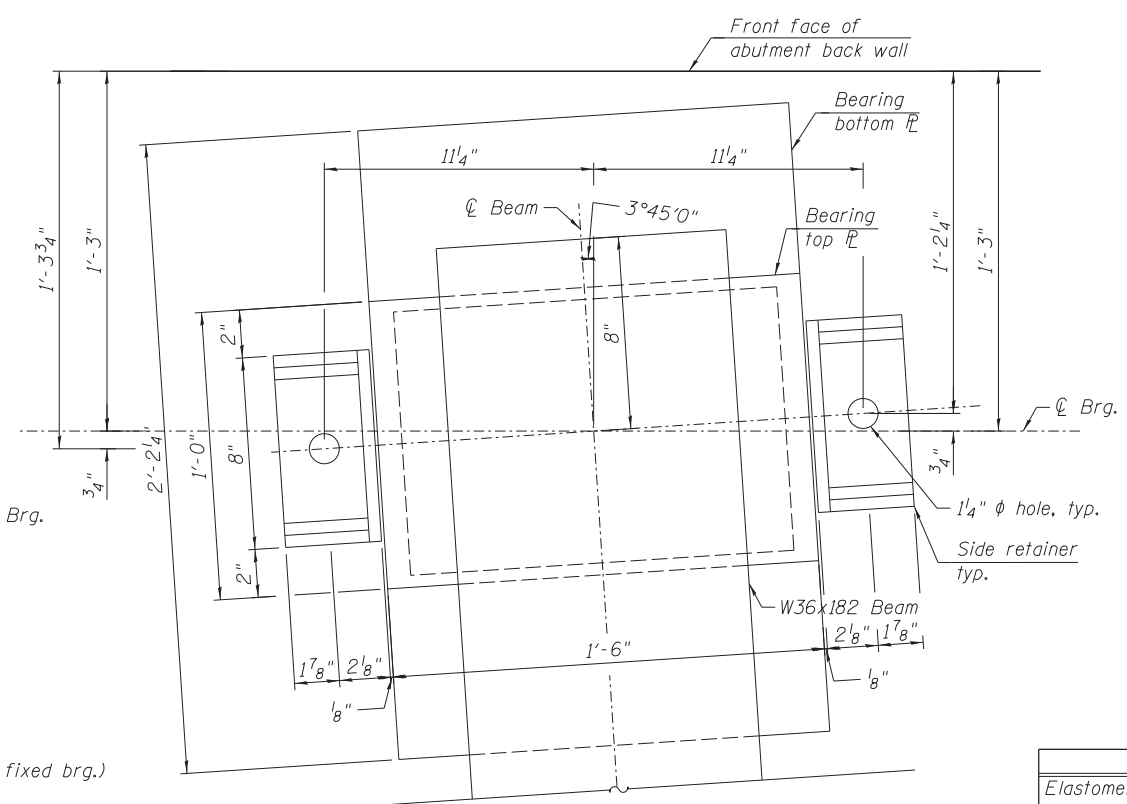
**BOTTOM BEARING ASSEMBLY**

**SECTION THRU PTFE**



**SIDE RETAINER**  
Equivalent rolled angle with stiffeners will be allowed in lieu of welded plates.

**SETTING ANCHOR BOLTS AT EXP. BRG.**  
D = 1/8" per each 100' of expansion for every 15° temp. change from the normal temp. of 50°F.



**BEARING ORIENTATION LAYOUT PLAN**



**NOTES**

- Anchor bolts shall be ASTM F1554 all-thread (or an Engineer-approved alternate material) of the grade(s) and diameter(s) specified. The corresponding specified grade of AASHTO M314 anchor bolts may be used in lieu of ASTM F1554.
- Anchor bolts at fixed bearings may be either cast in place or installed in holes drilled after the supported member is in place.
- Anchor bolts for Type II bearings shall be placed in holes drilled in the concrete through holes in the bottom bearing plate after members are in place. Side retainers shall be placed after bolts are installed.
- Drilled and set anchor bolts shall be installed according to Article 521.06 of the Standard Specifications.
- Side retainers and other steel members required for the elastomeric bearing assembly shall be included in the cost of Elastomeric Bearing Assembly, Type II.
- The 1/8" PTFE sheet shall be bonded directly to the top steel plate with a two-component, medium viscosity epoxy resin, conforming to the requirements of the Federal Specification MMM-A-134, Type I. The bond agent shall be applied on the full area of the contact surfaces.
- Bonding of 1/8" PTFE sheet during vulcanizing process will be permitted provided the process and method of adjusting assembly height is approved by the Engineer.
- All structural steel included in Bearing Assemblies shall be hot dipped galvanized. Cost included with Furnishing and Erecting Structural Steel or Elastomeric Bearing Assembly Type I.

**BILL OF MATERIAL**

Item	Unit	Total
Elastomeric Bearing Assembly Type II	Each	12
Anchor Bolts, 1"	Each	24

FILE PATH = C:\Users\will.mardous\Desktop\10161709-60W25-S26-Bearing2.dgn

**HBM**  
ENGINEERING GROUP, LLC.  
CONSULTING & DESIGN  
INSPECTION & RATING  
RESEARCH & TESTING

4415 WEST HARRISON ST.  
SUITE 231  
HILLSIDE, IL 60162  
PHONE: (708) 236-0900  
FAX: (708) 236-0901

DESIGNED - LAB, JMG	REVISD -
DRAWN - LAB, JMG	REVISD -
CHECKED - MAI, MI, JJS	REVISD -
DATE - 6/17/2013	REVISD -

**STATE OF ILLINOIS  
DEPARTMENT OF TRANSPORTATION**

**ELASTOMERIC BEARING TYPE II  
STRUCTURE NO. 016-1709**

SCALE: SHEET S1-26 OF 51 SHEETS STA. TO STA.

F.A.I. RTE.	SECTION	COUNTY	TOTAL SHEETS	SHEET NO.
90/94/290	2013-007R	COOK	317	170
CONTRACT NO. 60W25			ILLINOIS FED. AID PROJECT	

I-2E-2

I-27-12