

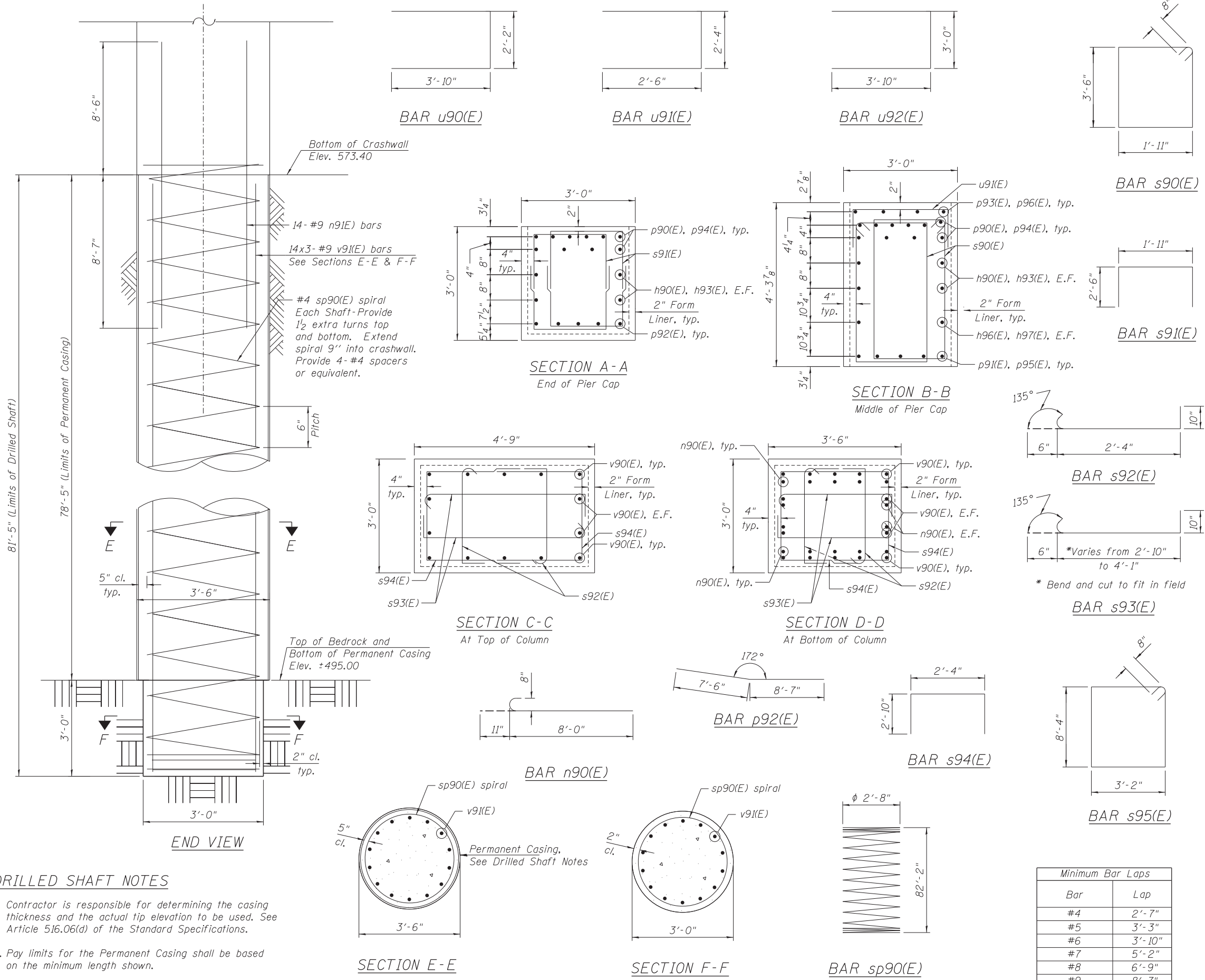
**BILL OF MATERIAL**

Bar	No.	Size	Length	Shape
h90(E)	4	#5	30'-7"	—
h91(E)	16	#6	24'-6"	—
h92(E)	10	#8	24'-6"	—
h93(E)	4	#5	28'-11"	—
h94(E)	16	#6	22'-10"	—
h95(E)	10	#8	22'-10"	—
h96(E)	2	#5	25'-9"	—
h97(E)	2	#5	27'-5"	—
n90(E)	56	#8	8'-11"	—
n91(E)	112	#9	17'-1"	—
p90(E)	10	#9	30'-9"	—
p91(E)	5	#9	23'-11"	—
p92(E)	10	#9	16'-1"	—
p93(E)	4	#5	5'-6"	—
p94(E)	10	#9	29'-1"	—
p95(E)	5	#9	22'-3"	—
p96(E)	4	#5	3'-10"	—
s90(E)	190	#6	12'-2"	□
s91(E)	112	#6	6'-11"	□
s92(E)	64	#5	3'-8"	□
s93(E)	64	#5	5'-5"	□
s94(E)	64	#5	8'-0"	□
s95(E)	97	#6	24'-4"	□
sp90(E)	8	#4	82'-2"	▨
u90(E)	8	#6	9'-10"	□
u91(E)	12	#4	7'-4"	□
u92(E)	20	#6	10'-8"	□
v90(E)	56	#8	10'-9"	—
v91(E)	336	#9	32'-9"	—
Porous Granular Embankment			Cu Yd	16
Structure Excavation			Cu Yd	38
Concrete Structures			Cu Yd	94.6
Reinforcement Bars, Epoxy Coated			Pound	70,220
Permanent Casing			Foot	628
Drilled Shaft in Soil, 42"			Cu Yd	224
Drilled Shaft in Rock, 36"			Cu Yd	7
Concrete Sealer			Sq Ft	2,252

**NOTES**

- Reinforcement bars designated (E) shall be epoxy coated.
- Bars noted thus, 3x2-#5 indicates 3 lines of bars with 2 lengths of bars per line.
- Bars equally spaced, unless otherwise noted.
- Apply concrete sealer to all exposed concrete surfaces of the pier.
- All edges shall have standard 3/4" chamfer.

Bar	Lap
#4	2'-7"
#5	3'-3"
#6	3'-10"
#7	5'-2"
#8	6'-9"
#9	8'-7"



**DRILLED SHAFT NOTES**

- Contractor is responsible for determining the casing thickness and the actual tip elevation to be used. See Article 516.06(d) of the Standard Specifications.
- Pay limits for the Permanent Casing shall be based on the minimum length shown.

**HBM**  
ENGINEERING GROUP, LLC.  
CONSULTING & DESIGN  
INSPECTION & RATING  
RESEARCH & TESTING

4415 WEST HARRISON ST.  
SUITE 231  
HILLSDALE, IL 60162  
PHONE: (708) 236-0900  
FAX: (708) 236-0901

0161709-60W25-S38-Pier1Details.dgn	DESIGNED - MI, MAF	REVISED -
USER NAME = will.mardous	DRAWN - LAB, MAF	REVISED -
PLOT SCALE = 1/4" = 1'-0"	CHECKED - MAI, MI, MWM	REVISED -
PLOT DATE = 6/14/2013	DATE - 6/17/2013	REVISED -

**STATE OF ILLINOIS  
DEPARTMENT OF TRANSPORTATION**

**PIER 1 SECTIONS AND DETAILS  
STRUCTURE NO. 016-1709**

SCALE: SHEET S1-38 OF 51 SHEETS STA. TO STA.

F.A.I. RTE.	SECTION	COUNTY	TOTAL SHEETS	SHEET NO.
90/94/290	2013-007R	COOK	317	182
CONTRACT NO. 60W25			ILLINOIS FED. AID PROJECT	