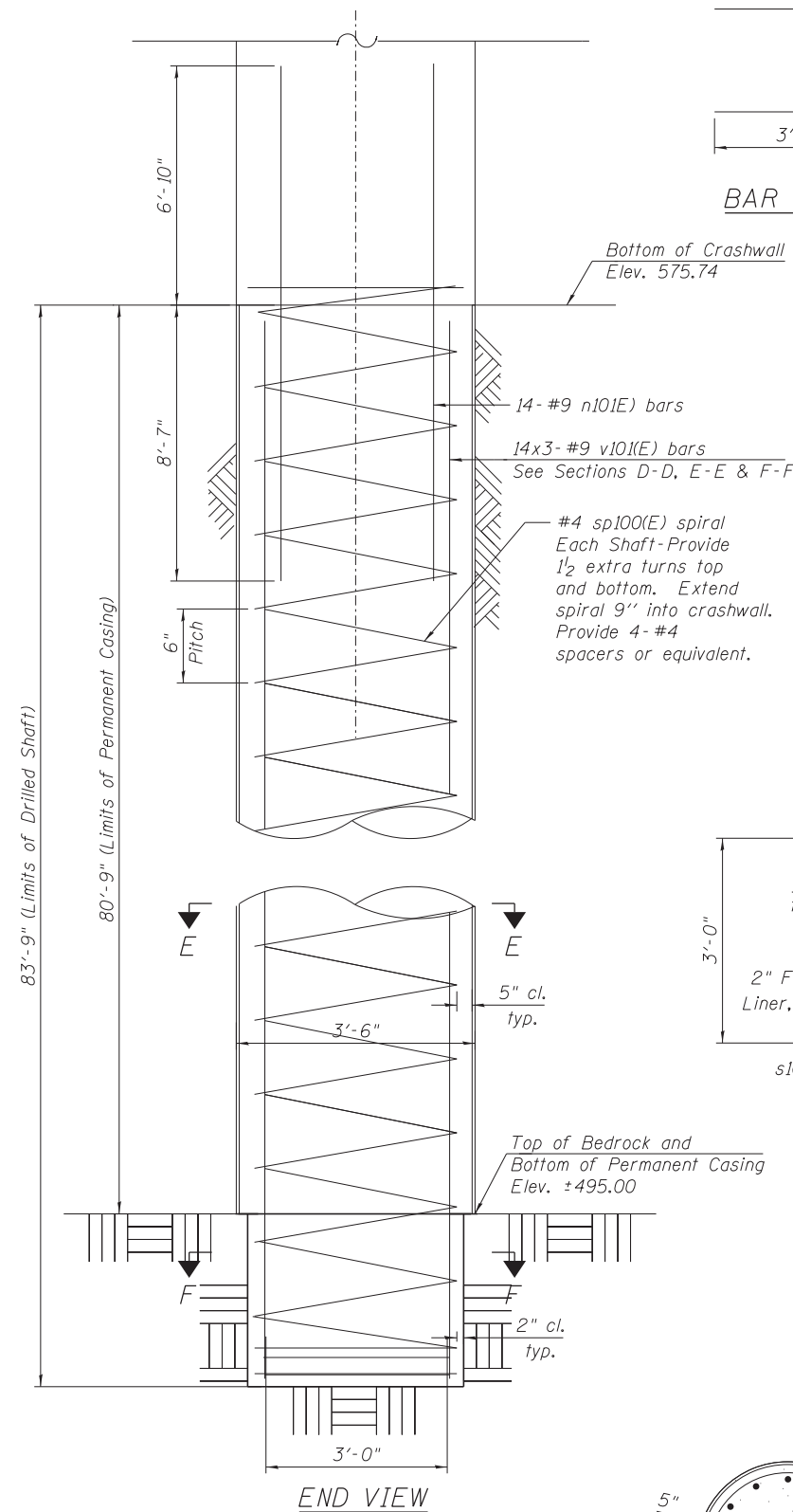
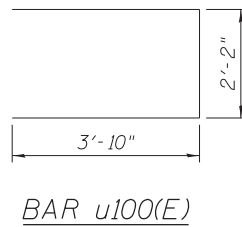


83'-9" (Limits of Drilled Shaft)

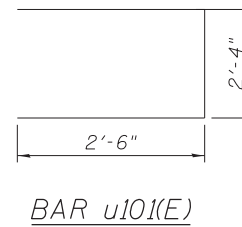


DRILLED SHAFT NOTES

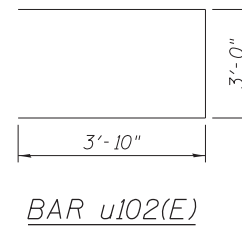
- Contractor is responsible for determining the casing thickness and the actual tip elevation to be used. See Article 516.06(d) of the Standard Specifications.
- Pay limits for the Permanent Casing shall be based on the minimum length shown.



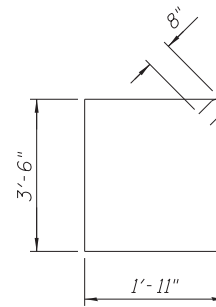
BAR u100(E)



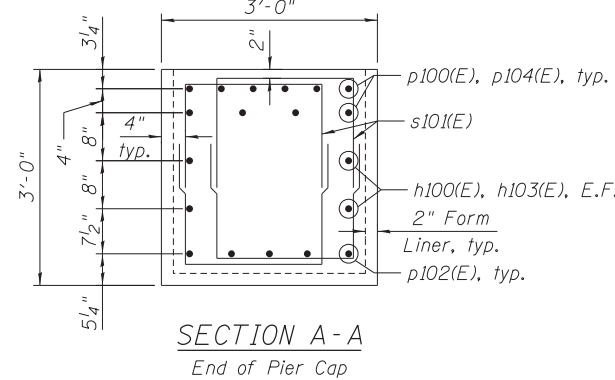
BAR u101(E)



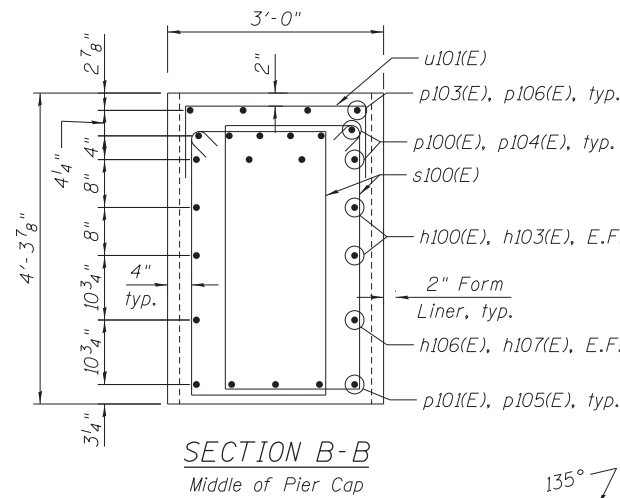
BAR u102(E)



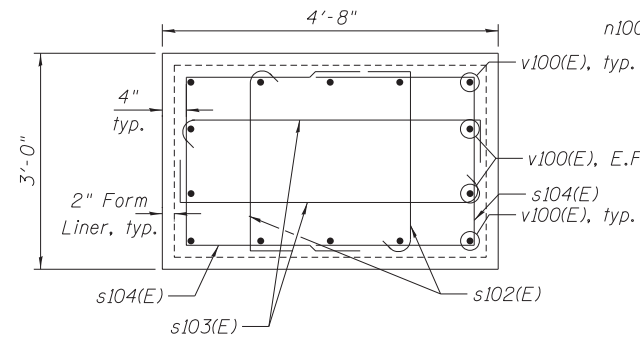
BAR s100(E)



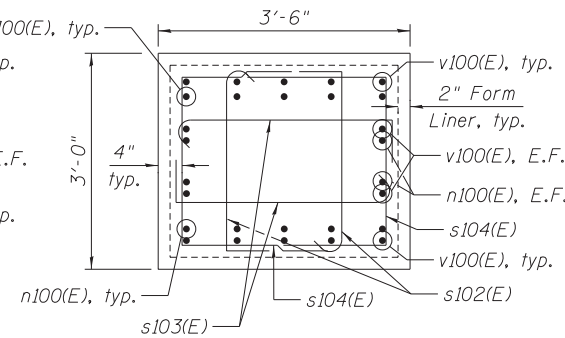
SECTION A-A
End of Pier Cap



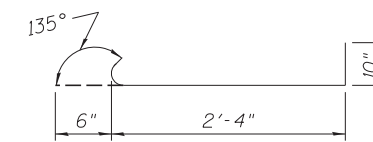
SECTION B-B
Middle of Pier Cap



SECTION C-C
At Top of Column



SECTION D-D
At Bottom of Column

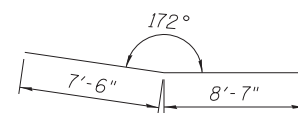


BAR s102(E)

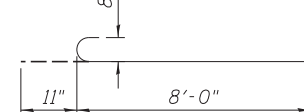


BAR s103(E)

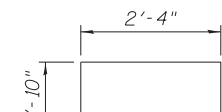
* Bend and cut to fit in field



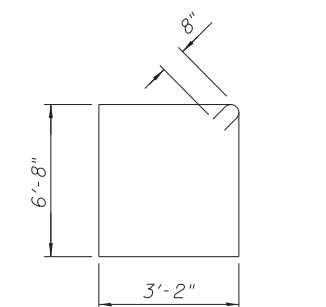
BAR p102(E)



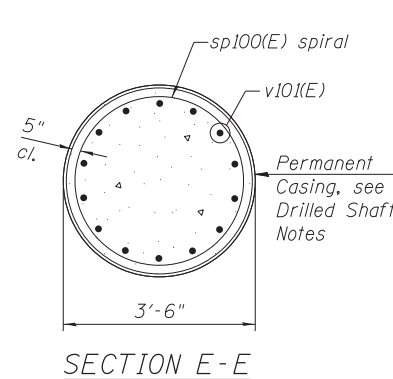
BAR n100(E)



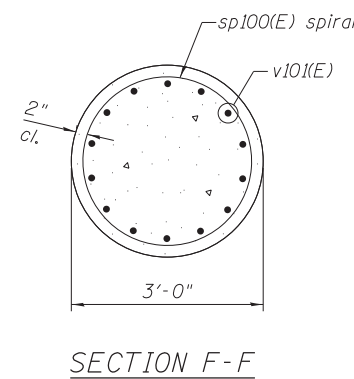
BAR s104(E)



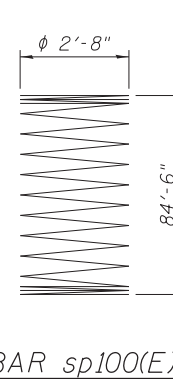
BAR s105(E)



SECTION E-E



SECTION F-F



BAR sp100(E)

BILL OF MATERIAL

Bar	No.	Size	Length	Shape
h100(E)	4	#5	30'-7"	—
h101(E)	12	#6	24'-6"	—
h102(E)	10	#8	24'-6"	—
h103(E)	4	#5	28'-11"	—
h104(E)	12	#6	22'-10"	—
h105(E)	10	#8	22'-10"	—
h106(E)	2	#5	25'-9"	—
h107(E)	2	#5	27'-5"	—
n100(E)	56	#8	8'-11"	—
n101(E)	112	#9	15'-5"	—
p100(E)	10	#9	30'-9"	—
p101(E)	5	#9	23'-11"	—
p102(E)	10	#9	16'-1"	—
p103(E)	4	#5	5'-6"	—
p104(E)	10	#9	29'-1"	—
p105(E)	5	#9	22'-3"	—
p106(E)	4	#5	3'-10"	—
s100(E)	190	#6	12'-2"	□
s101(E)	112	#6	6'-11"	□
s102(E)	64	#5	3'-8"	□
s103(E)	64	#5	5'-4"	□
s104(E)	64	#5	8'-0"	□
s105(E)	97	#6	21'-0"	□
sp100(E)	8	#4	84'-6"	—
u100(E)	8	#6	9'-10"	□
u101(E)	12	#4	7'-4"	□
u102(E)	16	#6	10'-8"	□
v100(E)	56	#8	10'-6"	—
v101(E)	336	#9	33'-7"	—
Porous Granular Embankment		Cu Yd	71	
Structure Excavation		Cu Yd	54	
Concrete Structures		Cu Yd	83.8	
Reinforcement Bars, Epoxy Coated		Pound	69,870	
Permanent Casing		Foot	646	
Drilled Shaft in Soil, 42"		Cu Yd	231	
Drilled Shaft in Rock, 36"		Cu Yd	7	
Concrete Sealer		Sq Ft	2,048	

NOTES

- Reinforcement bars designated (E) shall be epoxy coated.
- Bars noted thus, 3x2-#5 indicates 3 lines of bars with 2 lengths of bars per line.
- Bars equally spaced, unless otherwise noted.
- Apply concrete sealer to all exposed concrete surfaces of the pier.
- All edges shall have standard 3/4" chamfer.

Minimum Bar Laps	
Bar	Lap
#4	2'-7"
#5	3'-3"
#6	3'-10"
#7	5'-2"
#8	6'-9"
#9	8'-7"

FILE PATH = C:\Users\will.mardous\Desktop\WorGen\0161709-60W25-S41-Pier2Details.dgn

HBM
ENGINEERING GROUP, LLC
CONSULTING & DESIGN
INSPECTION & RATING
RESEARCH & TESTING

4415 WEST HARRISON ST.
SUITE 231
HILLSIDE, IL 60162
PHONE: (708) 236-0900
FAX: (708) 236-0901

0161709-60W25-S41-Pier2Details.dgn
USER NAME = will.mardous
PLOT SCALE = 1:4.0000 '1' / 1"
PLOT DATE = 6/14/2013

DESIGNED - MI, MAF
DRAWN - LAB, MAF
CHECKED - MAI, MI, MWM
DATE - 6/17/2013

REVISED -
REVISED -
REVISED -
REVISED -

**STATE OF ILLINOIS
DEPARTMENT OF TRANSPORTATION**

**PIER 2 SECTIONS AND DETAILS
STRUCTURE NO. 016-1709**

SCALE: SHEET S1-41 OF 51 SHEETS STA. TO STA.

F.A.I. R.T.E.	SECTION	COUNTY	TOTAL SHEETS	SHEET NO.
90/94/290	2013-007R	COOK	317	185
				CONTRACT NO. 60W25
ILLINOIS FED. AID PROJECT				