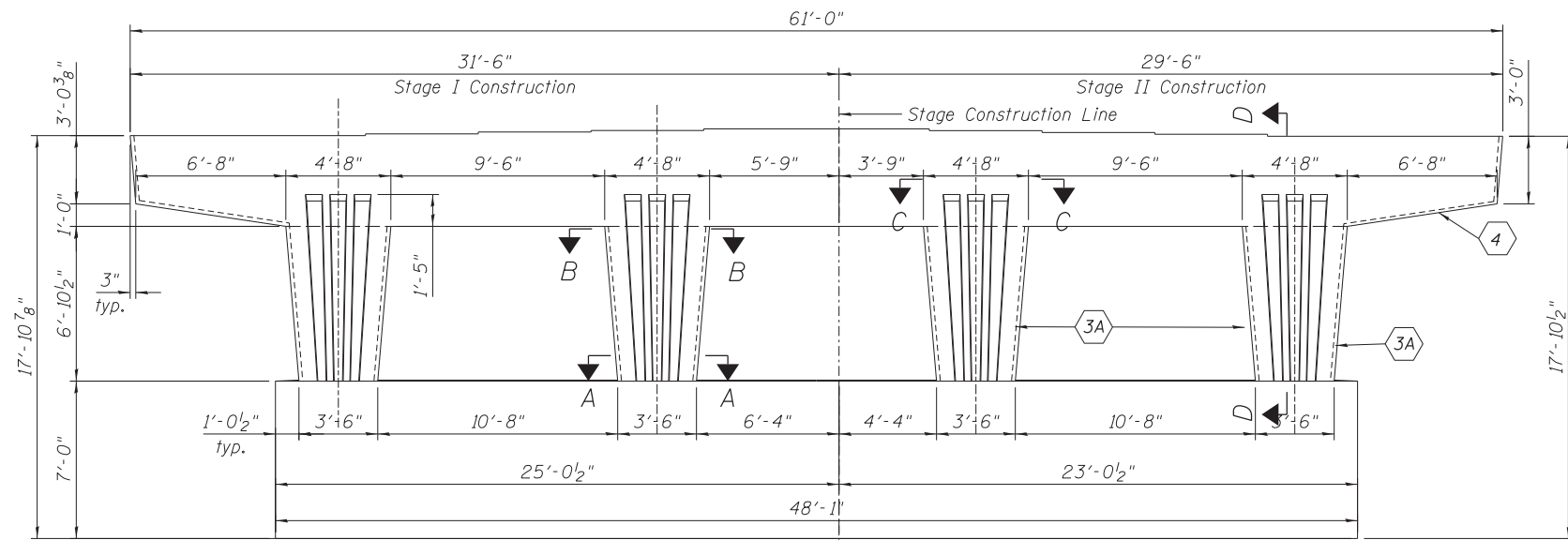
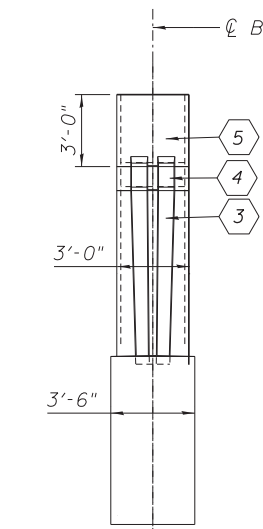


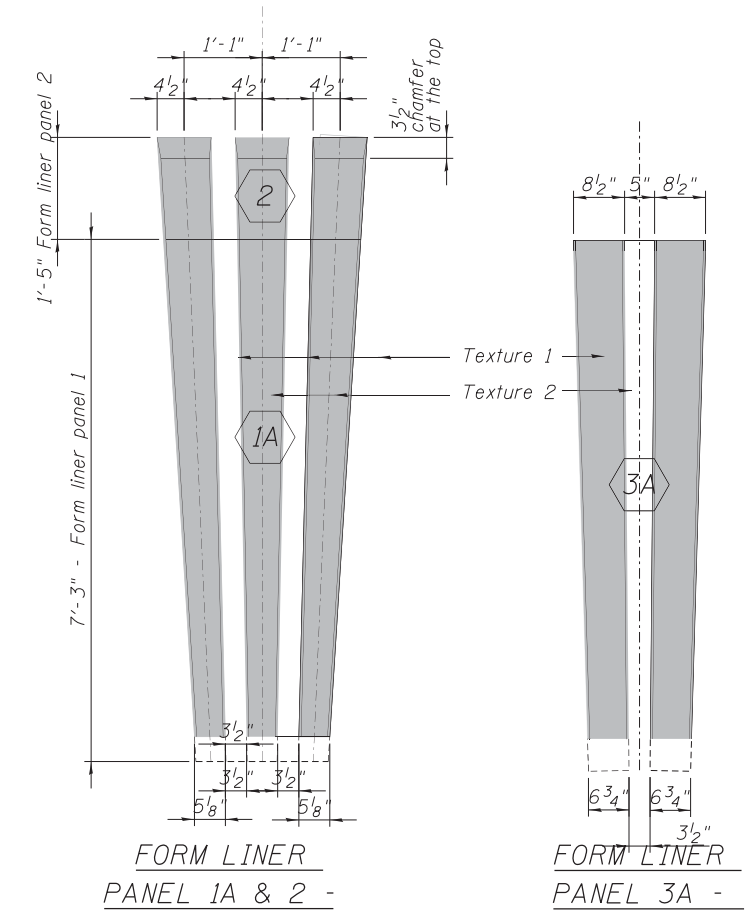
**PIER 2 ELEVATION**  
(Looking North)



**PIER 2 ELEVATION**  
(Looking South)



**PIER 2 END VIEW**  
(Looking West)



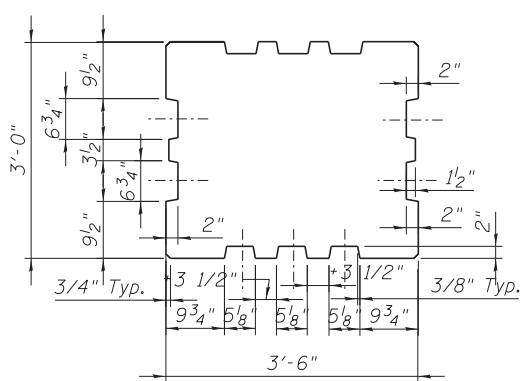
Note:  
For panel 1A and 3A use the same master mold as for panel 1, but shorter. Locate panel the same as on Pier 1, omit the lower portion to accommodate the shorter pier.

- ① ② ③ ④ Textured Form Liner: Texture 1 & 2
- ⑤ Textured Form Liner: Texture 2

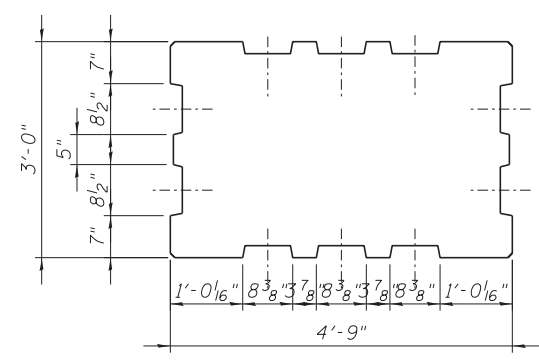
Note: For surface indicated as 5, contractor can chose to build those large protrusion directly into these forms, providing a smooth uniform surface and stain all piers and caps with light gray semi transparent stain.

**NOTES:**

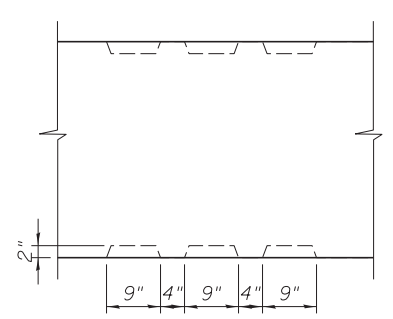
**PIER 2 SECTION D-D**  
(Looking East)



**SECTION A-A**  
At Bottom of Column



**SECTION B-B**  
At Top of Column



**SECTION C-C**

**BILL OF MATERIAL**

ITEM	UNIT	TOTAL
Form Liner Textured Surface	SQ FT	893

FILE PATH = C:\Users\will.mordous\DeskTop\Work\0161709-60W25-S42-Pier2Arch.dgn

**HBM**  
ENGINEERING GROUP, LLC  
CONSULTING & DESIGN  
INSPECTION & RATING  
RESEARCH & TESTING

4415 WEST HARRISON ST.  
SUITE 231  
HILLSIDE, IL 60162  
PHONE: (708) 236-0900  
FAX: (708) 236-0901

0161709-60W25-S42-Pier2Arch.dgn  
USER NAME = will.mordous

DESIGNED - MI, LAB  
DRAWN - LAB, MAF  
CHECKED - MAI, MI, JJS  
DATE - 6/17/2013

REVISED -  
REVISED -  
REVISED -  
REVISED -

**STATE OF ILLINOIS**  
**DEPARTMENT OF TRANSPORTATION**

**PIER 2 ARCHITECTURAL DETAILS**  
**STRUCTURE NO. 016-1709**

SCALE: SHEET S1-42 OF 51 SHEETS STA. TO STA.

F.A.I. R.E.	SECTION	COUNTY	TOTAL SHEETS	SHEET NO.
90/94/290	2013-007R	COOK	317	186
CONTRACT NO. 60W25				
ILLINOIS FED. AID PROJECT				