

Benchmark: Cut square on northwest corner of sign foundation at north side of Harrison Street, approximately 80' west of west line of Morgan Street. Elevation 593.07.
 Cut square on east wall of Morgan Street at approximately centerline of I-290, near north entrance to CTA. Elevation 600.63.

Existing Structure: The retaining wall is comprised of reinforced concrete with attached guardrail above. The length of the retaining wall is 282'-6 1/2" and the total exposed height varies from approximately 18'-5" at the west end to 1'-11" at the east end (measured from grade at front face of wall). The retained height varies from 22'-8" at the west end to 9'-3 5/8" at the east end. There is a 2'-8" high crashwall in front of the retaining wall in Panels 1 through 3.

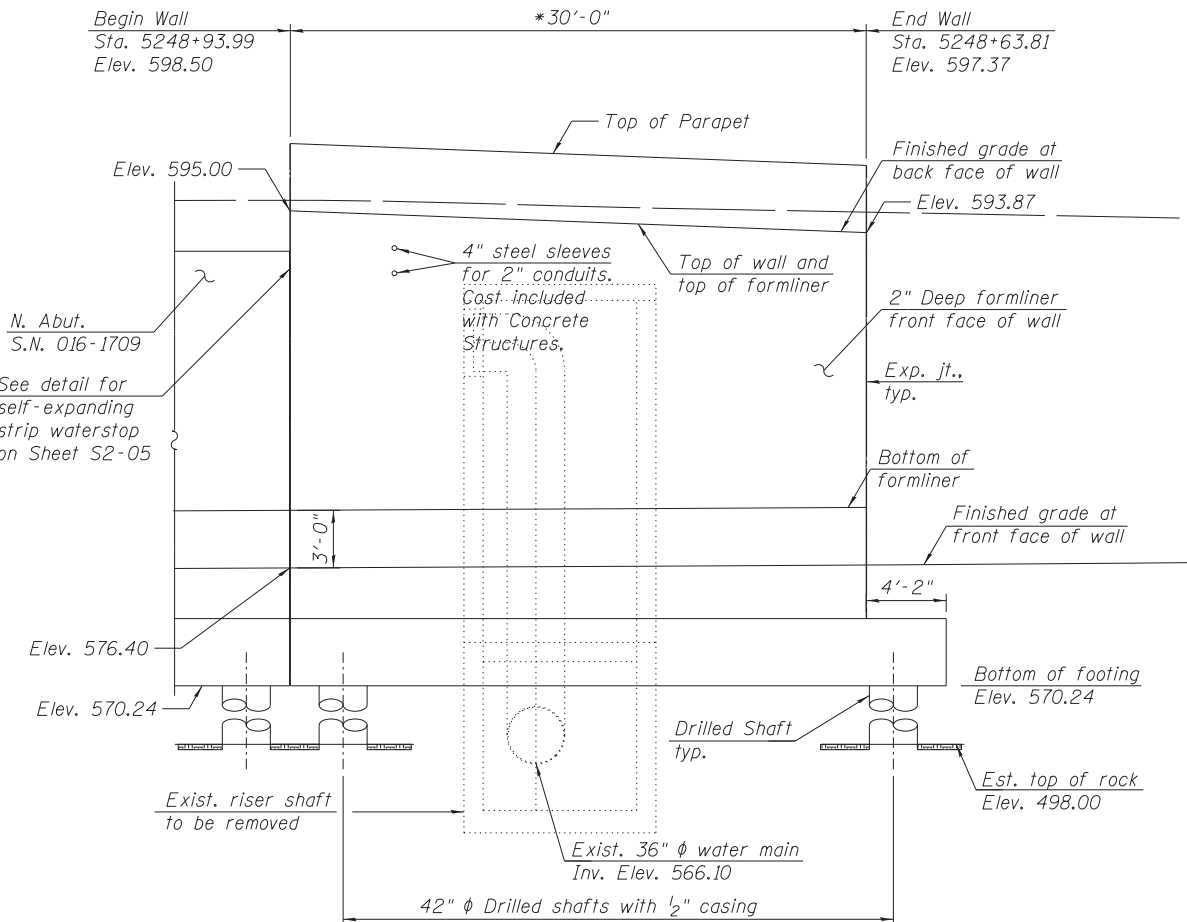
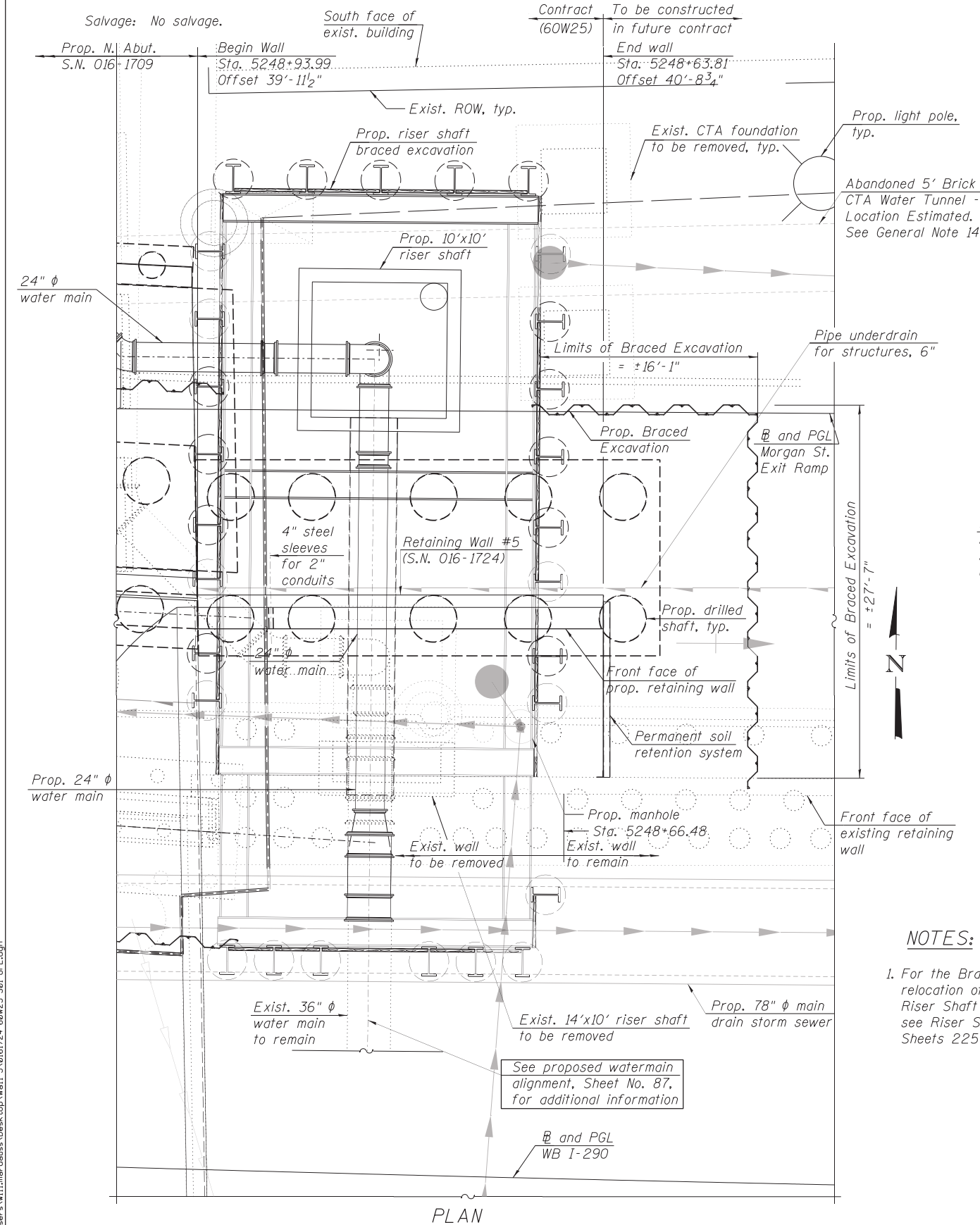
DESIGN STRESSES

FIELD UNITS
 f'c = 3,500 psi
 fy = 60,000 psi (Reinforcement)

DESIGN SPECIFICATIONS

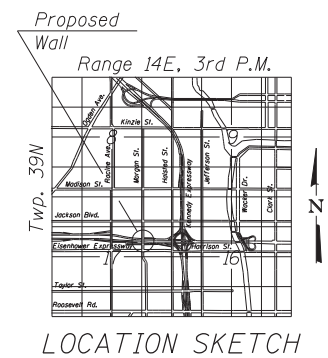
2012 AASHTO LRFD Bridge
 Design Specifications, 6th Edition

* Measured along front face of wall.



LEGEND:

- Front Face F.F.
- Back Face B.F.
- Combined Sewer
- Boring Log
- Electric
- Fiber Optic
- Storm Sewer
- Braced Excavation
- Water Line
- Fire Hydrant
- Light Pole

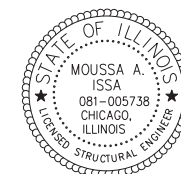


NOTES:

- For the Braced Excavation required for the relocation of the existing water main and Riser Shaft Sections, details and quantities see Riser Shaft and Braced Excavation Sheets 225 thru 232.

ELEVATION

(Looking at front face of wall)



Signed Moussa A. Issa
 Moussa A. Issa, HBM II. Lic. No. 081-005738
 Expires 11-30-2014

Date 6/17/2013 For Sheets S2-01 Thru S2-07

GENERAL PLAN
RETAINING WALL 5 ALONG
MORGAN ST. EXIT RAMP
F.A.I. RTE. 290
(EISENHOWER EXPRESSWAY) AND CTA
F.A.I. RTE. 290 - SECTION 2013-007R
COOK COUNTY
STA. 5248+93.99 TO STA. 5248+63.81
STRUCTURE NO. 016-1724

FILE PATH = C:\Users\will.mardoush\Desktop\Wall 5\0161724-60W25-S01-GPE.dgn

HBM
 ENGINEERING GROUP, LLC.
 CONSULTING & DESIGN
 INSPECTION & RATING
 RESEARCH & TESTING

0161724-60W25-S01-GPE.dgn
 USER NAME = will.mardoush
 PLOT SCALE = 5.00' / in.
 PLOT DATE = 6/14/2013

DESIGNED - MI, MAF, JJS
 DRAWN - JJS, MAF
 CHECKED - MAI, MI, LAB
 DATE - 6/17/2013

REVISED -
 REVISED -
 REVISED -
 REVISED -

STATE OF ILLINOIS
DEPARTMENT OF TRANSPORTATION

GENERAL PLAN AND ELEVATION
STRUCTURE NO. 016-1724

SCALE: SHEET S2-01 OF 7 SHEETS STA. TO STA.

F.A.I. RTE. 90/94/290	SECTION 2013-007R	COUNTY COOK	TOTAL SHEETS 317	SHEET NO. 196
CONTRACT NO. 60W25			ILLINOIS FED. AID PROJECT	