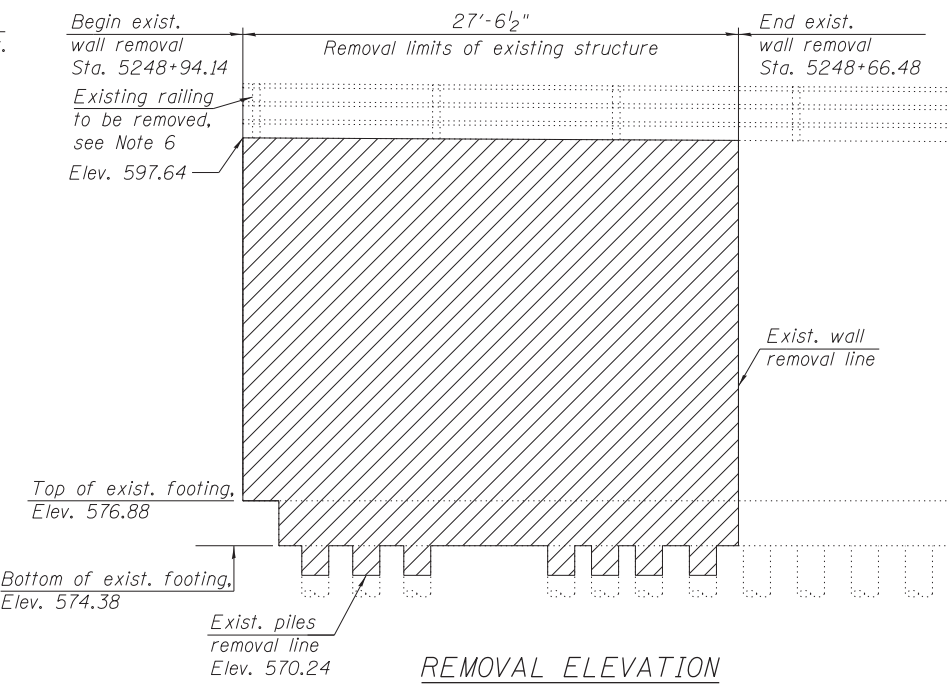
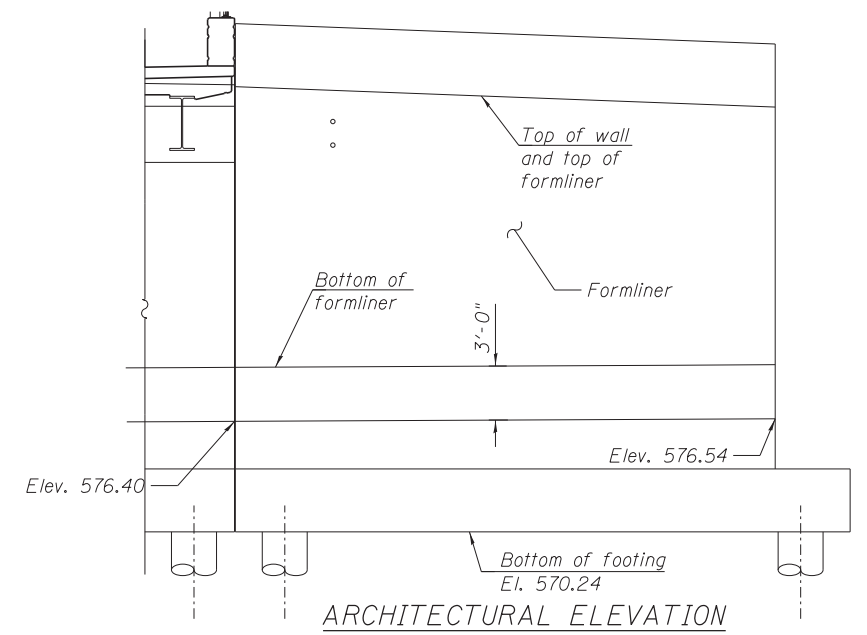


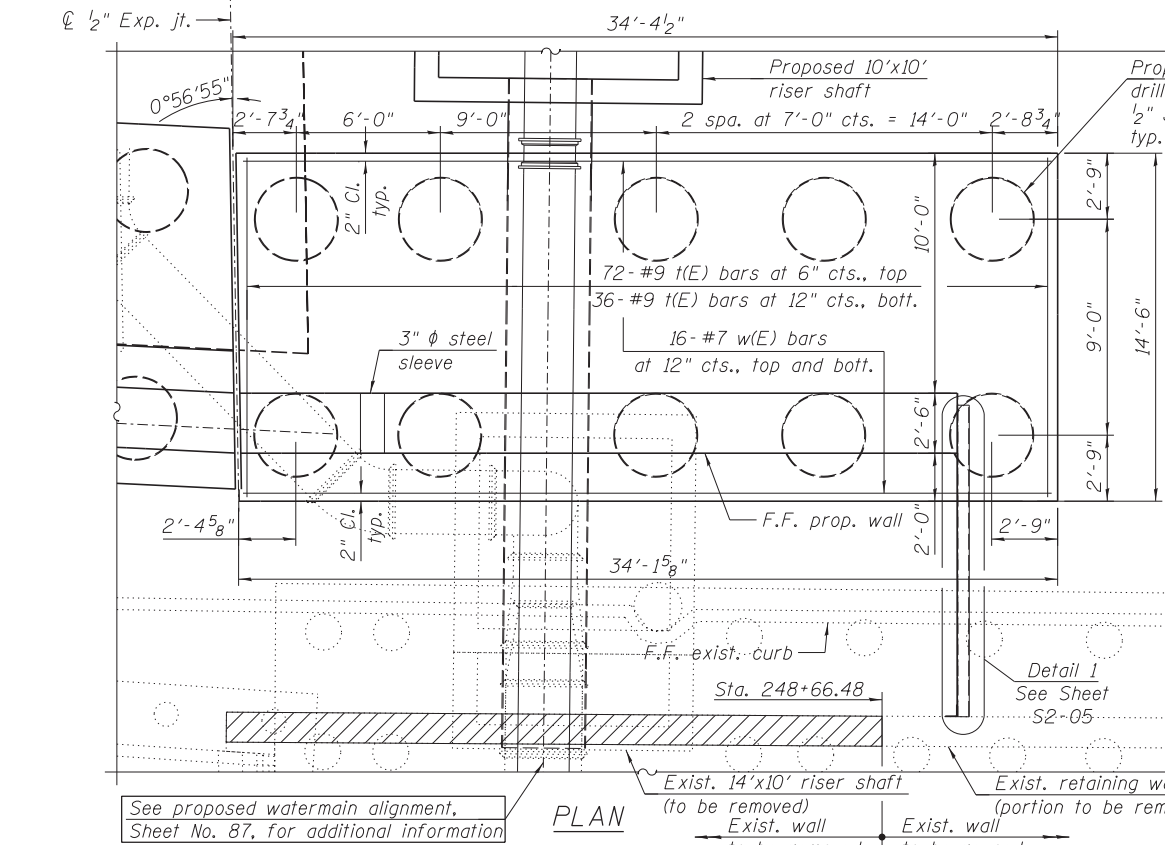
ELEVATION



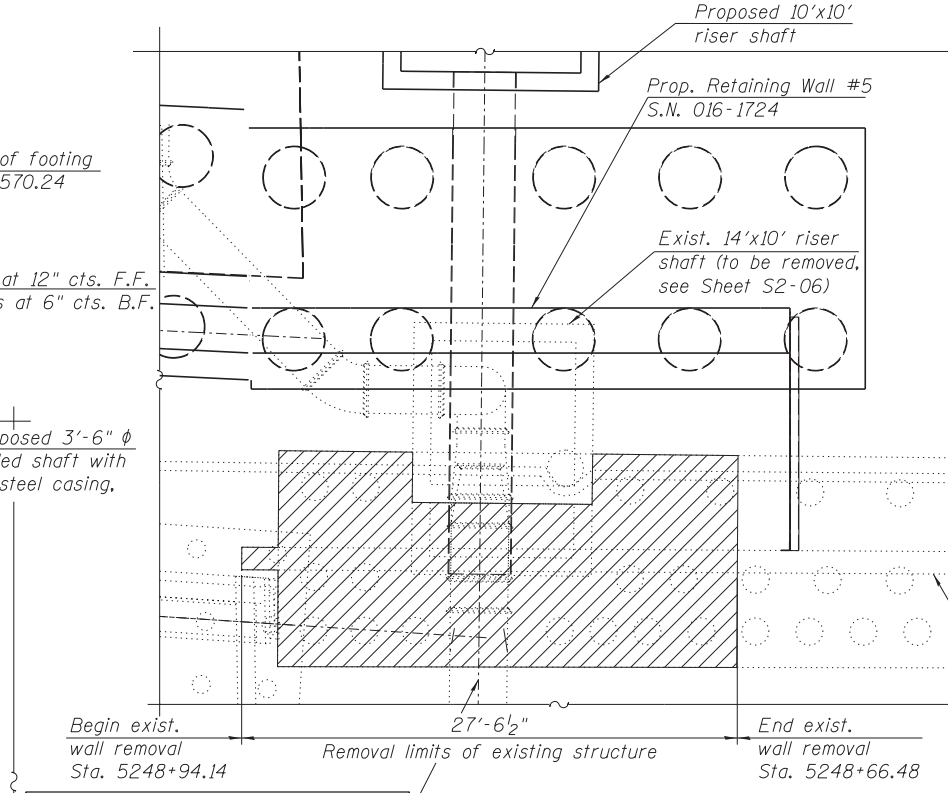
REMOVAL ELEVATION



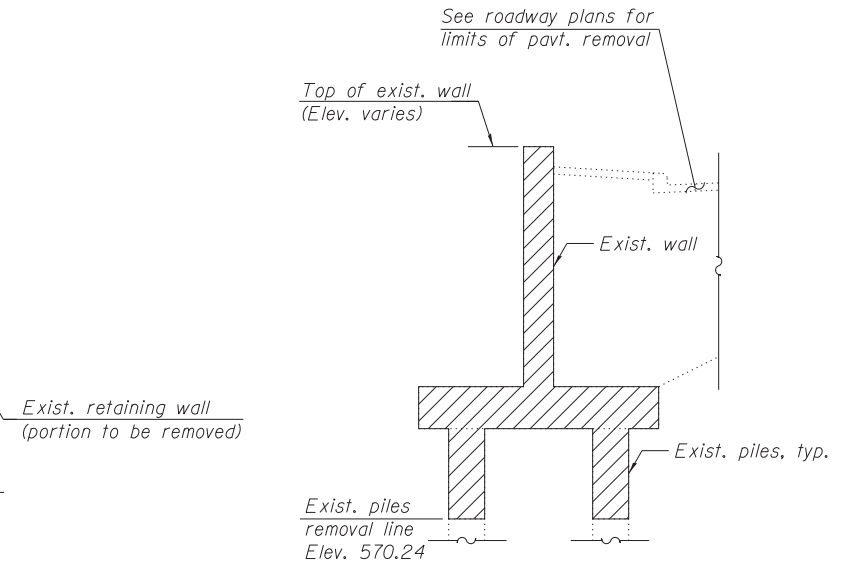
ARCHITECTURAL ELEVATION



PLAN



REMOVAL PLAN



TYPICAL REMOVAL SECTION

NOTES:

1. For sections and details, see Sheet S2-04 of 7.
2. For Lap Splices and Bill of Material, see Sheet S2-04 of 7.
3. All existing piles are 18" phi concrete piles.
4. During removal of the existing retaining wall and piles, soil disturbance shall be kept at a minimum, and coordinated and approved by the Engineer.
5. For Detail 1, Permanent Soil Retention System, see Sheet S2-05 of 7
6. Cost for removal of existing railing shall be included with "Concrete Removal"

LEGEND:

- B.F. - denotes Back Face
- E.F. - denotes Each Face
- F.F. - denotes Front Face
- Concrete Removal

STATE OF ILLINOIS
DEPARTMENT OF TRANSPORTATION

PLAN & ELEVATION, REM. PLAN & ELEVATION, AND FORMLINER DETAILS
STRUCTURE NO. 016-1724

F.A.I. R.E.	SECTION	COUNTY	TOTAL SHEETS	SHEET NO.
90/94/290	2013-007R	COOK	317	198
CONTRACT NO. 60W25			ILLINOIS FED. AID PROJECT	

DESIGNED - MI, MAF, JJS	REVISED -
DRAWN - JJS, MAF	REVISED -
CHECKED - MAI, MI, LAB	REVISED -
DATE - 6/17/2013	REVISED -

HBM
ENGINEERING GROUP, LLC
CONSULTING & DESIGN
INSPECTION & RATING
RESEARCH & TESTING

0161724-60W25-S03-Plan & Elevation.dgn
USER NAME = will.mardoush
PLOT SCALE = 4:0' 1" / in.
PLOT DATE = 6/14/2013

FILE PATH = C:\Users\will.mardoush\Desktop\Wall 5\0161724-60W25-S03-Plan & Elevation.dgn