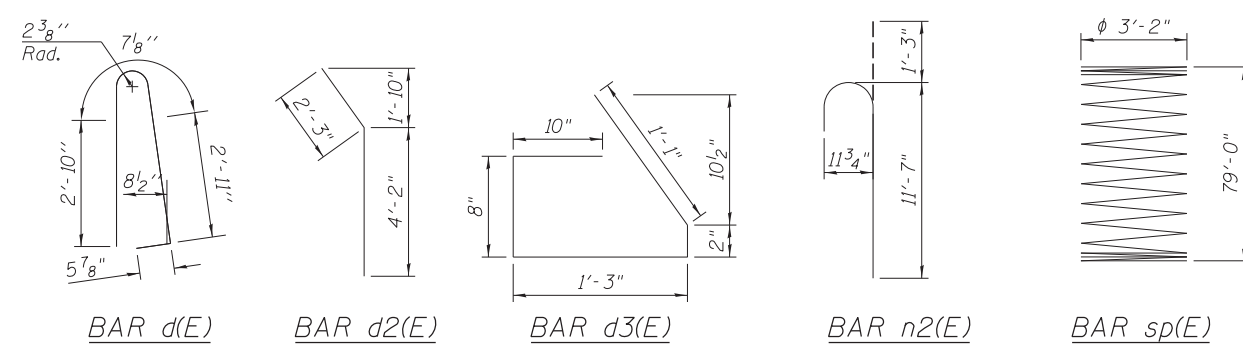


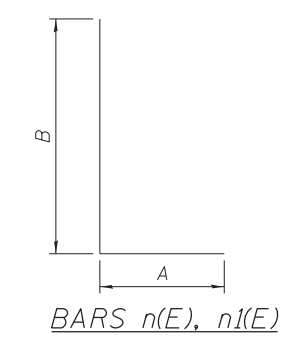
BILL OF MATERIAL

Bar	No.	Size	Length	Shape
d(E)	34	#5	6'-10"	U
d1(E)	32	#5	6'-6"	—
d2(E)	62	#6	6'-5"	—
d3(E)	34	#5	4'-0"	U
e(E)	11	#5	29'-8"	—
e1(E)	1	#8	29'-8"	—
h(E)	44	#5	29'-8"	—
n(E)	37	#5	7'-1"	—
n1(E)	72	#9	13'-2"	—
n2(E)	170	#9	12'-10"	—
t(E)	108	#9	14'-2"	—
w(E)	32	#7	33'-10"	—
v(E)	16	#5	40'-2"	—
v1(E)	31	#9	40'-2"	—
v15(E)	340	#9	43'-9"	—
sp(E)	10	#4	79'-0"	—
Concrete Removal			CU YD	70
Concrete Structures			CU YD	115.9
Form Liner Textured Surface			SQ FT	467
Protective Coat			SQ YD	94
Reinforcement Bars, Epoxy Coated			POUND	87,300
Permanent Casing			FOOT	783
Drilled Shaft in Soil - 42" Dia.			CU YD	278.8

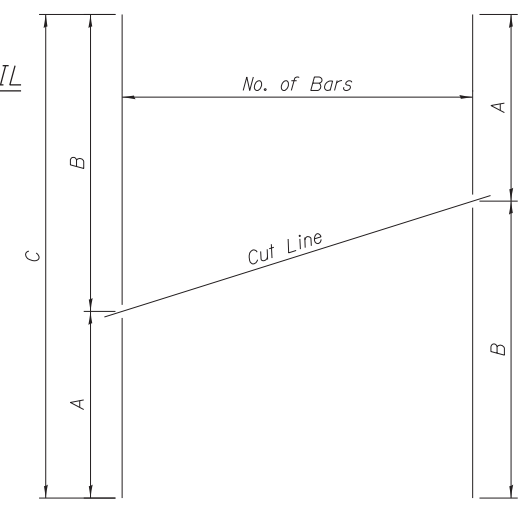
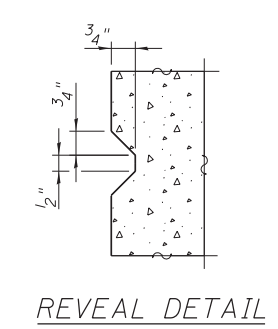
Reinforcement bars designated (E) shall be epoxy coated.



Bar	Lap
#4	2'-7"
#5	3'-3"
#6	3'-10"
#7	5'-2"
#8	6'-9"
#9	8'-7"



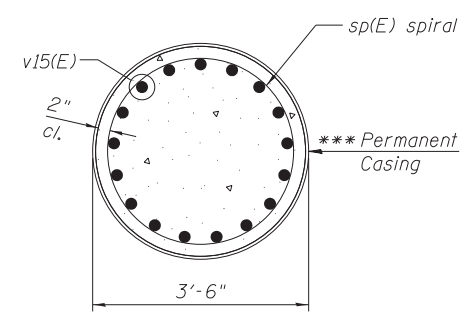
Bar	A	B
n(E)	10"	6'-3"
n1(E)	1'-7"	11'-7"



SERIES OF BAR CUTTING DIAGRAM
See table for dimensions. Make all cuts normal to bar axis

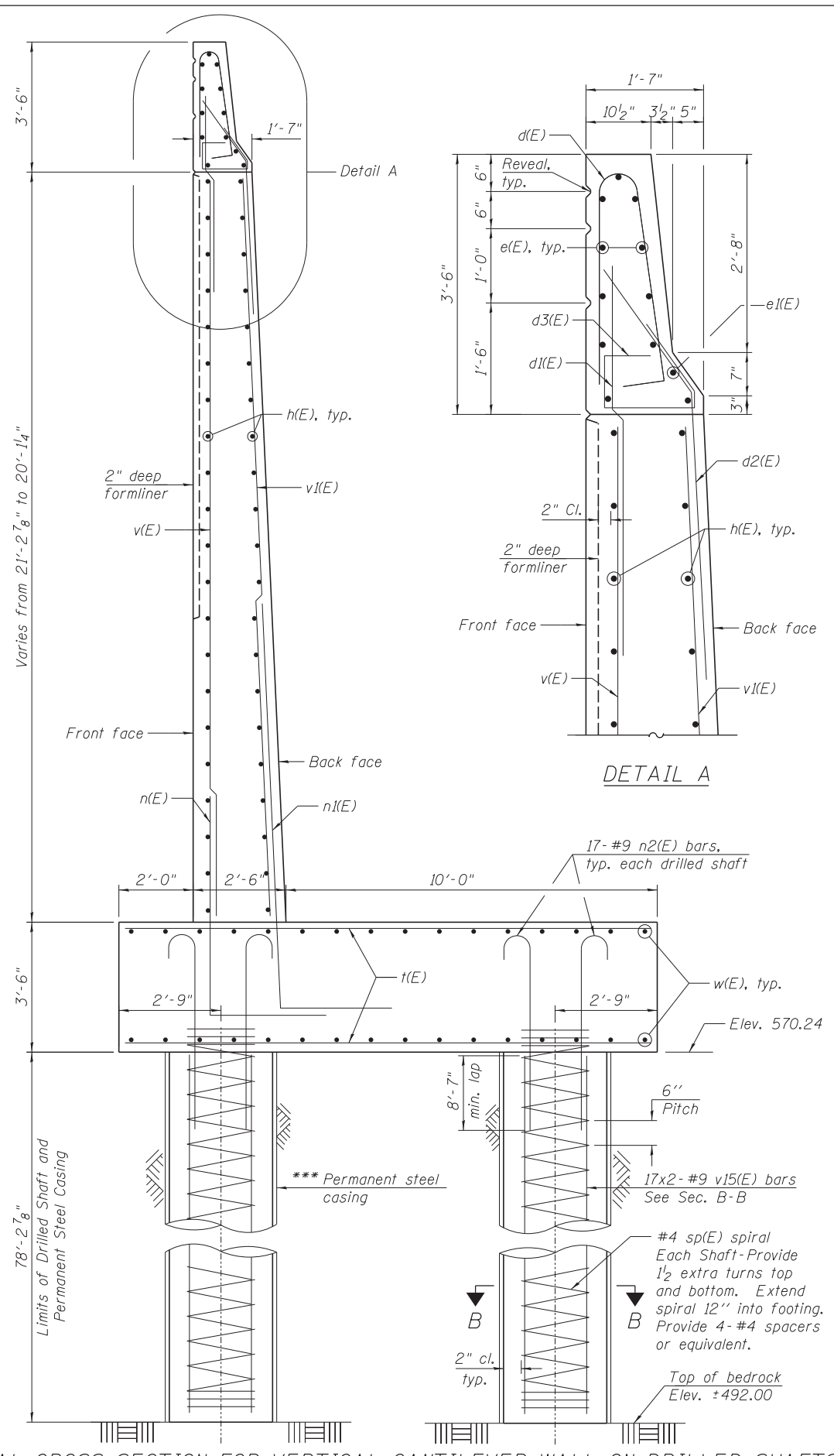
BAR TABLE SCHEDULE

Bar	No. of Sets Req'd	No. of Bars Per Set	A	B	C
v(E)	1	16	19'-9"	20'-11"	40'-2"
v1(E)	1	31	19'-9"	20'-11"	40'-2"



SECTION B-B

***Contractor is responsible for determining the casing thickness and the actual tip elevation to be used. See Article 516.06(d) of the Standard Specifications. Pay limits for the Permanent Casing shall be based on the minimum length shown.



TYPICAL CROSS SECTION FOR VERTICAL CANTILEVER WALL ON DRILLED SHAFTS

FILE PATH = C:\Users\will.mardous\Desktop\Wall 5161724-60W25-S84-T Wall Details.dgn

HBM
ENGINEERING GROUP, LLC
CONSULTING & DESIGN
INSPECTION & RATING
RESEARCH & TESTING

4415 WEST HARRISON ST.
SUITE 231
HILLSIDE, IL 60162
PHONE: (708) 236-0900
FAX: (708) 236-0901

0161724-60W25-S84-T Wall Details.dgn
USER NAME = will.mardous
PLOT SCALE = 2:0 '1' = 1"
PLOT DATE = 6/14/2013

DESIGNED - MI, MAF, JJS	REVISED -
DRAWN - JJS, MAF	REVISED -
CHECKED - MAI, MI, LAB	REVISED -
DATE - 6/17/2013	REVISED -

STATE OF ILLINOIS
DEPARTMENT OF TRANSPORTATION

SECTIONS, DETAILS AND BILL OF MATERIAL
STRUCTURE NO. 016-1724

SCALE: SHEET S2-04 OF 7 SHEETS STA. TO STA.

F.A.I. RTE.	SECTION	COUNTY	TOTAL SHEETS	SHEET NO.
90/94/290	2013-007R	COOK	317	199
CONTRACT NO. 60W25				
ILLINOIS FED. AID PROJECT				