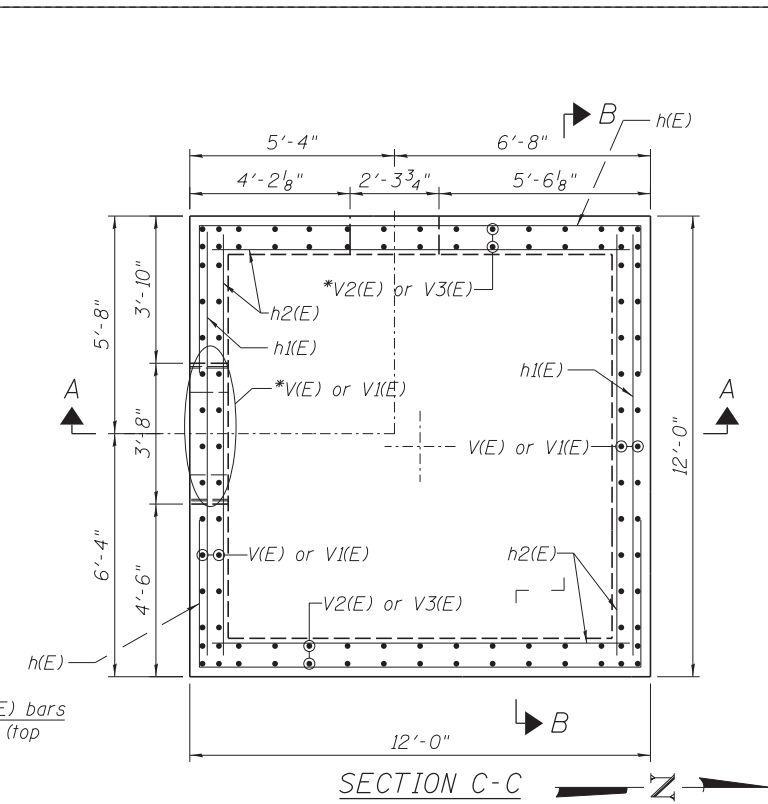
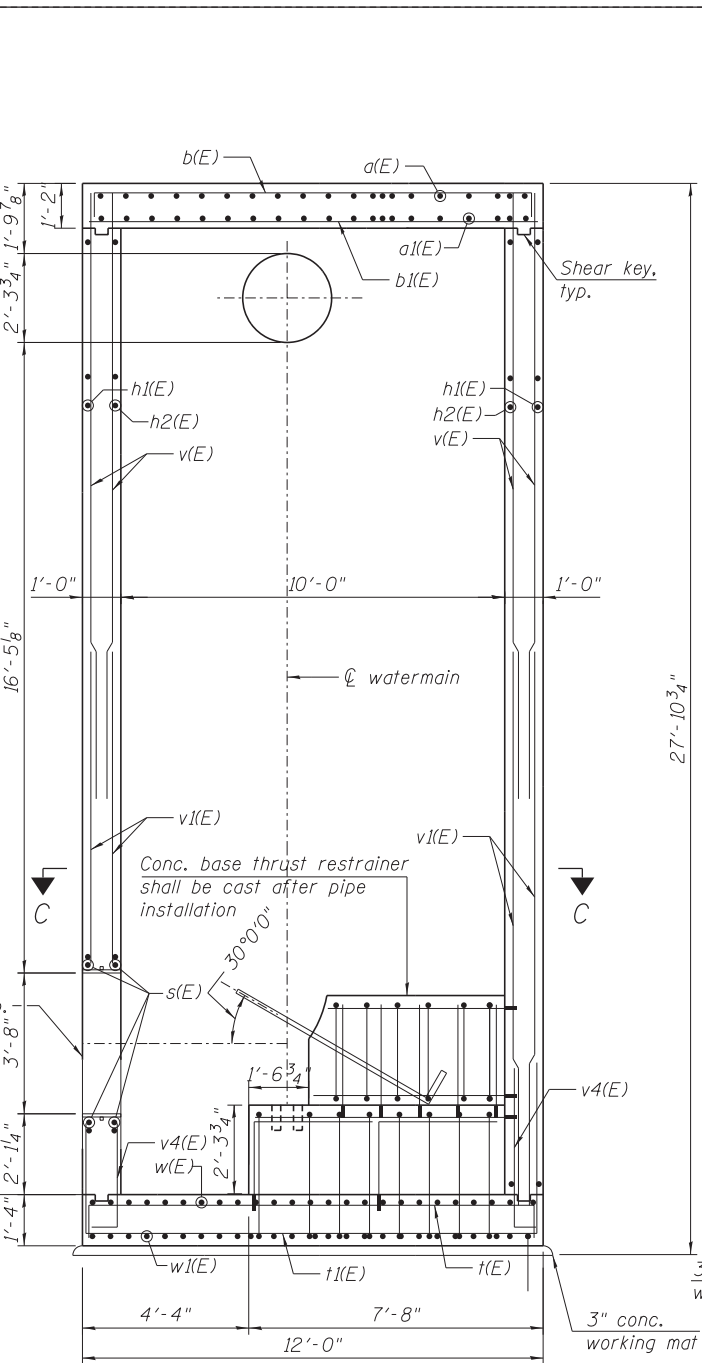


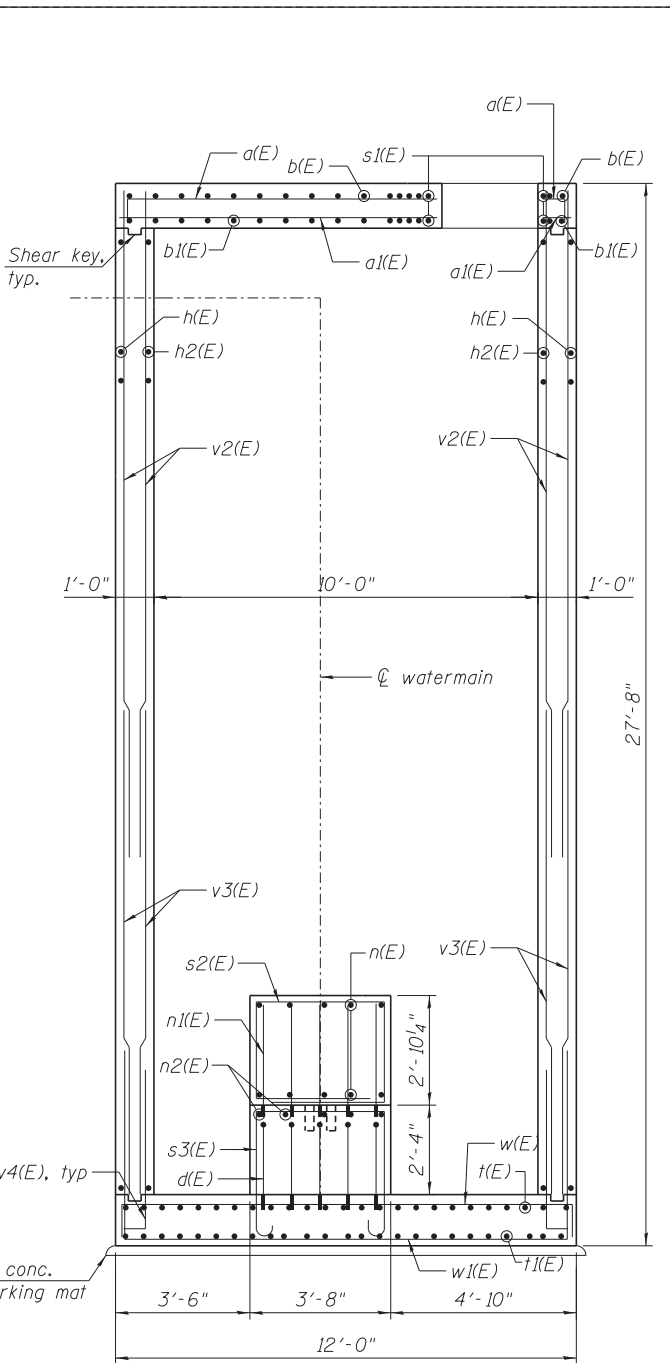
ROOF SLAB PLAN



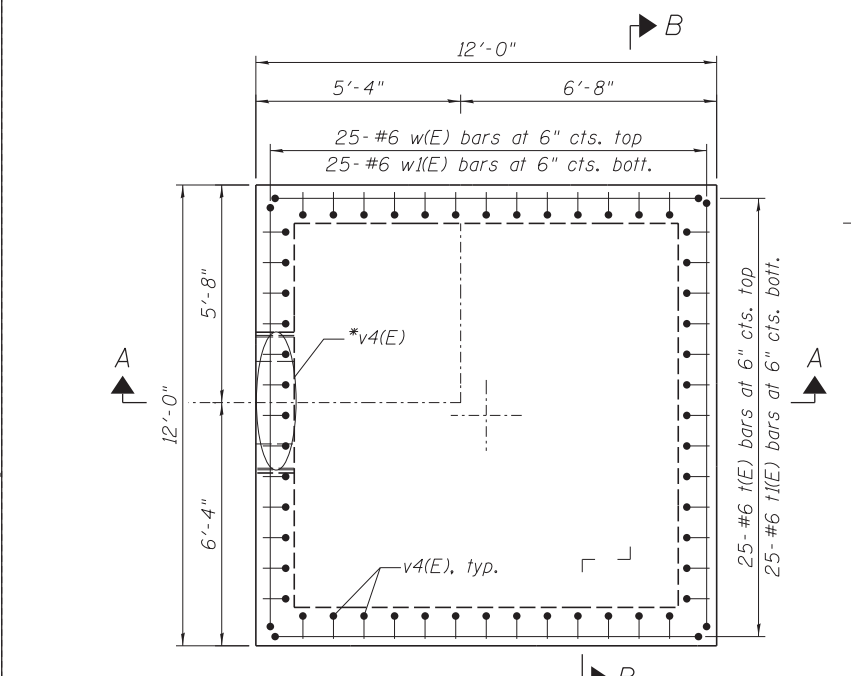
SECTION C-C



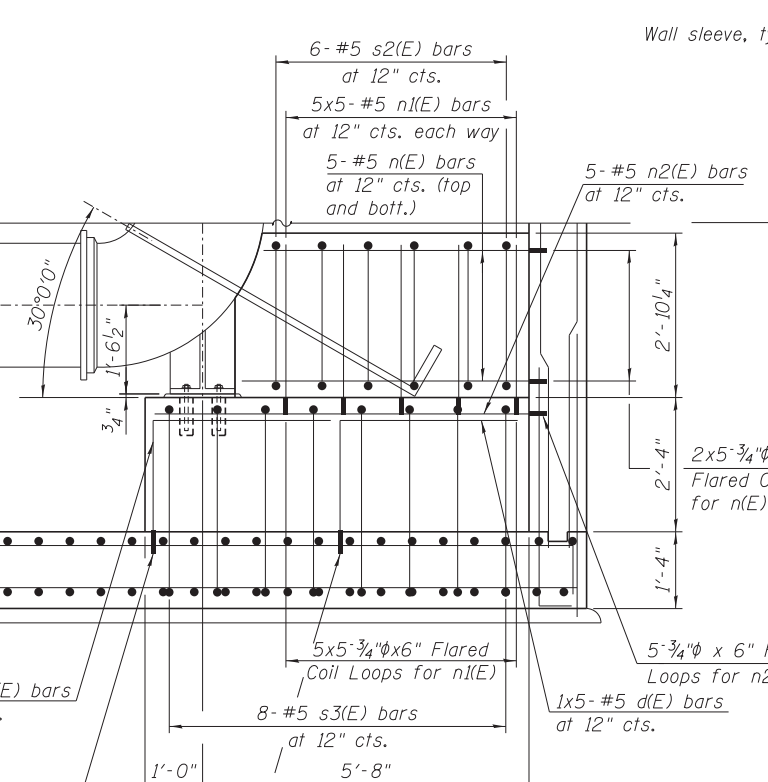
SECTION A-A



SECTION B-B



BOTTOM SLAB PLAN



DETAIL 2

NOTES:

1. For General Notes, see Sheet S4-02.
2. For Bill of Material, bar diagrams and minimum bar laps, see Sheet S4-04.

*Order bars full length and cut in field to fit

FILE PATH = C:\Users\will.mardous\Desktop\Project_Sht-RS03-Details2.dgn

HBM
ENGINEERING GROUP, LLC
CONSULTING & DESIGN
INSPECTION & RATING
RESEARCH & TESTING

4415 WEST HARRISON ST.
SUITE 231
HILLSIDE, IL 60162
PHONE: (708) 236-0900
FAX: (708) 236-0901

D160W25-Sht-RS03-Details2.dgn
USER NAME = will.mardous
PLOT SCALE = 2:6.0000 "1" = 1"
PLOT DATE = 6/14/2013

DESIGNED - MI, WM	REVISED -
DRAWN - WM	REVISED -
CHECKED - MAI, MI, JJS	REVISED -
DATE - 6/17/2013	REVISED -

DESIGNED - MI, WM	REVISED -
DRAWN - WM	REVISED -
CHECKED - MAI, MI, JJS	REVISED -
DATE - 6/17/2013	REVISED -

STATE OF ILLINOIS
DEPARTMENT OF TRANSPORTATION

RISER SHAFT SECTIONS AND DETAILS (SHEET 2 OF 3)
RISER SHAFT AND BRACED EXCAVATION

SCALE: SHEET S4-03 OF 8 SHEETS STA. TO STA.

F.A.I. RTE. 90/94/290	SECTION 2013-007R	COUNTY COOK	TOTAL SHEETS 317	SHEET NO. 227
CONTRACT NO. 60W25			ILLINOIS FED. AID PROJECT	