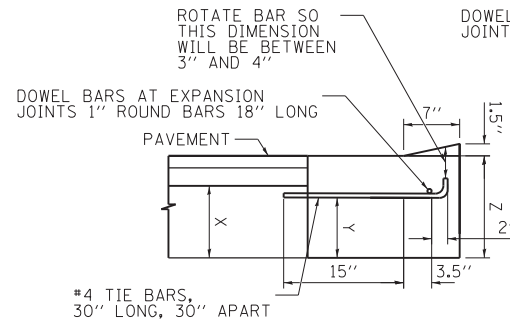
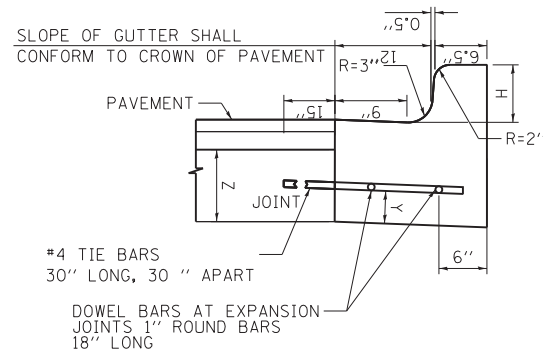


DETAILS OF CONCRETE CURB, TYPE B AND COMBINATION CONCRETE CURB AND GUTTER, TYPE B (SPECIAL)

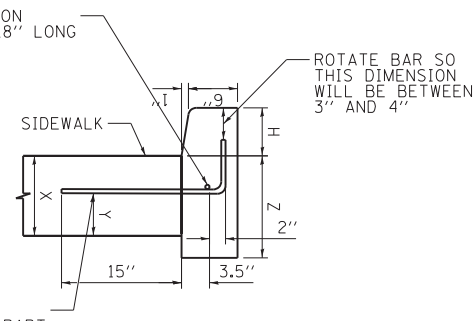
NOTE:

H = VARIABLE, MINIMUM 3" AND NOT TO EXCEED 9" (SEE PLANS)
 X = THICKNESS OF PAVEMENT
 Y = ONE HALF THE THICKNESS OF CONCRETE PAVEMENT OR CONCRETE BASE
 Z = 10" OR THICKNESS OF PAVEMENT - WHICHEVER IS GREATER



DEPRESSED CURB

(USED AT DRIVEWAY AND ADA RAMPS)



BARRIER CURB

(USED IN FRONT OF FENCE OF UIC LOT #9 AND NEXT TO ADA RAMPS WHEN NEEDED)

DEPRESSED CURB & GUTTER

DEPRESSED CURB AND GUTTER AND TRANSITIONS BETWEEN BARRIER CURB WILL BE PAID FOR UNDER THE ADJACENT CURB ITEM. DEPRESSED CURB AND MOUNTABLE GUTTER MUST MEET CDOT ADA STANDARDS.

JOINTS IN CURB AND COMBINATION CURB & GUTTER

FOR FULL PAVEMENT RECONSTRUCTION, TRANSVERSE JOINTS OF A TYPE SIMILAR TO THAT USED IN THE ADJACENT PAVEMENT SHALL BE INSTALLED IN CURB AND COMBINATION CURB AND GUTTER IN PROLONGATION WITH THE JOINTS IN THE PAVEMENT. THE DETAILS OF THE TRANSVERSE JOINTS IN THE CURB AND COMBINATION CURB AND GUTTER SHALL BE APPROVED BY THE ENGINEER. WHERE CURB OR COMBINATION CURB AND GUTTER IS CONSTRUCTED ADJACENT TO A FLEXIBLE BASE PAVEMENT OR CLASS C PATCH, 5/8" THICK EXPANSION JOINTS COMPOSED OF PREFORMED JOINT FILLER AND SEALANT SHALL BE INSTALLED IN THE CURB AND/OR COMBINATION CURB AND GUTTER AT POINTS OF CURVATURE AND AT CONSTRUCTION JOINTS AT A DISTANCE NOT EXCEEDING 50'. CONTRACTION JOINTS SHALL ALSO BE PLACED BETWEEN THESE EXPANSION JOINTS AT A DISTANCE NOT EXCEEDING 10'. CONTRACTION AND EXPANSION JOINTS SHALL LINE UP WITH THE PROPOSED SIDEWALK SAWCUT JOINTS (EXCEPT FOR AT POINTS OF CURVATURE). ALL TIE BARS SHALL BE CORRUGATED; ALL DOWEL BARS SHALL BE SMOOTH.

BASIS OF PAYMENT

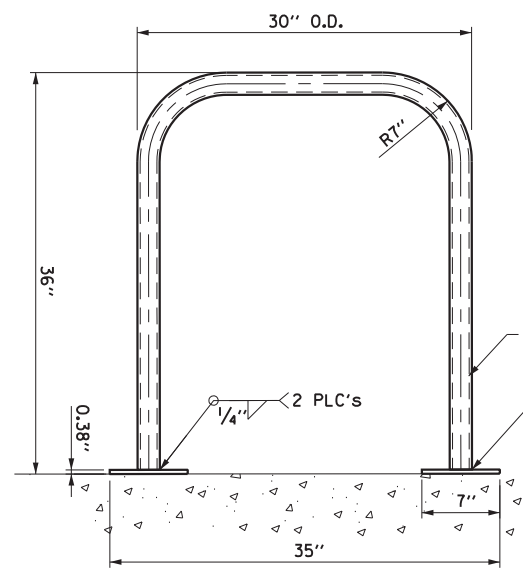
THE COST OF ALL JOINTS, INCLUDING LABOR, FURNISH AND PLACING OF STEEL, JOINT FILLER, SEALANT, AND ALL OTHER INCIDENTALS SHALL BE INCLUDED IN THE UNIT PRICE BID FOR CONCRETE CURB, TYPE B, AND COMBINATION CONCRETE CURB AND GUTTER ITEMS. SAWCUTTING AND FURNISHING AND INSTALLING CURB ANCHORS, DOWELS, AND TIE BARS SHALL ALSO BE INCIDENTAL TO THESE ITEMS.

COMBINATION CONCRETE CURB AND GUTTER, TYPE B (SPECIAL)

(USED AT MORGAN ST, CONGRESS PKWY, AND TILDEN ST)

CONCRETE CURB, TYPE B

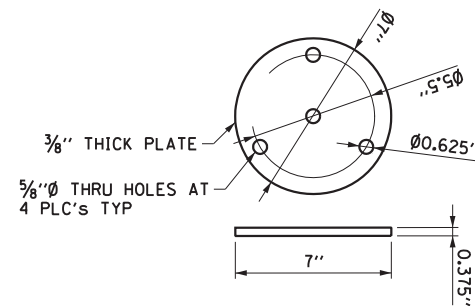
BICYCLE RACKS



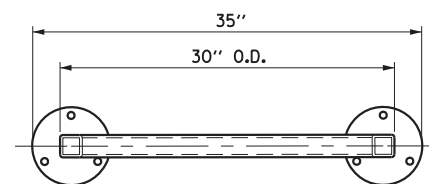
ELEVATION

NOTE:

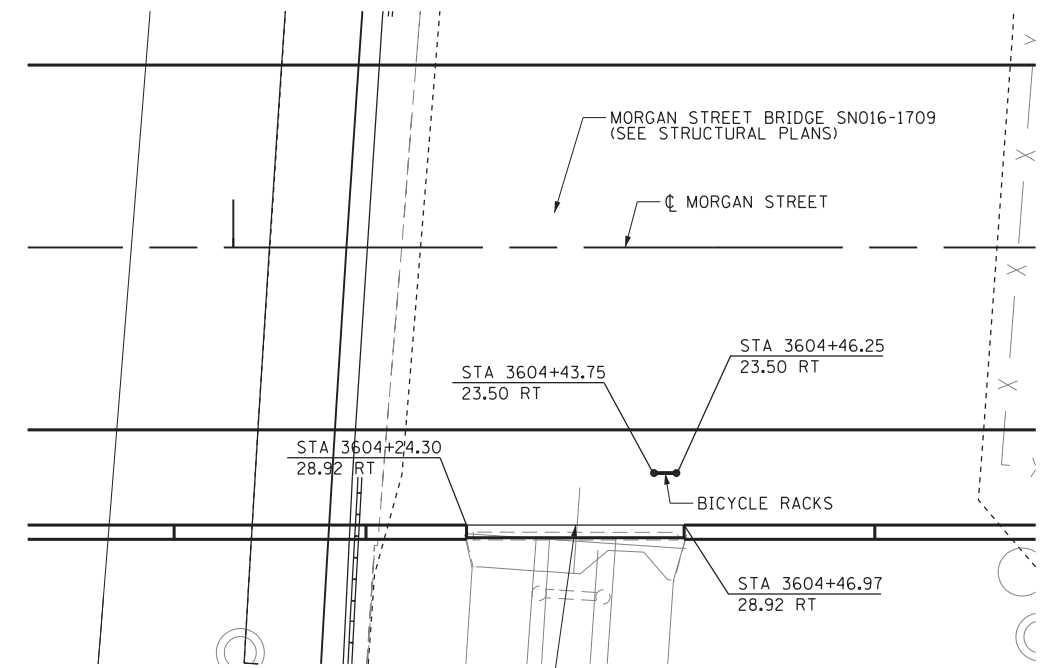
1. SQUARE FLANGE MOUNTING PLATE MAY BE SUBSTITUTES FOR ROUND FLANGED.



FLANGE DETAIL
 NOT TO SCALE



DETAIL PLAN



PLAN

FILE PATH = p:\388035\p\mt\escomon\me\local\p\AECOM\01\Documents\01\Americas\Transportation\60269938_Circle\Phase_1\1\000_CAD\006_Roadway\Sheets\60W25-sht-Detail-06



D160W25-sht-Detail-06
 USER NAME = pimsarno
 PLOT SCALE = 10.0000' / 1"
 PLOT DATE = 6/14/2013

DESIGNED - AFC
 DRAWN - AFC
 CHECKED - DBM
 DATE - 6/17/2013

REVISED -
 REVISED -
 REVISED -
 REVISED -

**STATE OF ILLINOIS
 DEPARTMENT OF TRANSPORTATION**

**ROADWAY DETAILS
 CURB DETAIL / BICYCLE RACKS**

SCALE: NTS SHEET 7 OF 9 SHEETS STA. TO STA.

F.A.I. RTE.	SECTION	COUNTY	TOTAL SHEETS	SHEET NO.
90/94/290	2013-007R	COOK	317	269D
CONTRACT NO. 60W25				
ILLINOIS FED. AID PROJECT				