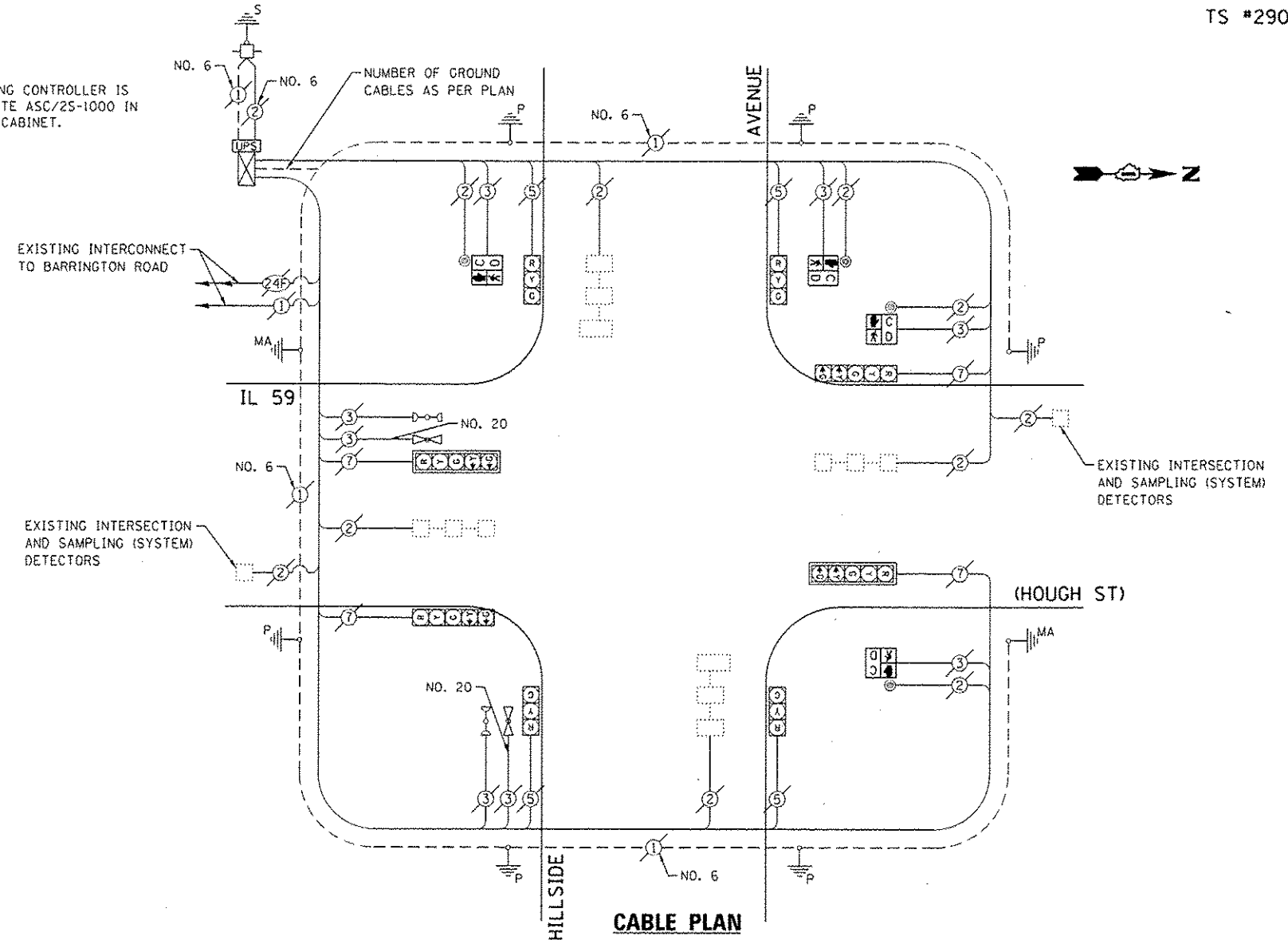


SCHEDULE OF QUANTITIES  
IL 59 (HOUGH ST) AT HILLSIDE AVENUE

NO.	QUANT.	UNIT
1.	1	EACH MAINTENANCE OF EXISTING TRAFFIC SIGNAL INSTALLATION
2.	4	EACH PEDESTRIAN SIGNAL HEAD, LED, 1-FACE, BRACKET MOUNTED WITH COUNTDOWN TIMER
3.	4	EACH PEDESTRIAN PUSH-BUTTON
4.	1	EACH MODIFY EXISTING CONTROLLER CABINET
5.	1	EACH REMOVE EXISTING TRAFFIC SIGNAL EQUIPMENT
6.	1	EACH UNINTERRUPTIBLE POWER SUPPLY, SPECIAL

NOTE:  
THE EXISTING CONTROLLER IS AN ECONOLITE ASC/25-1000 IN A TYPE IV CABINET.



THE FOLLOWING ITEMS SHALL BE REMOVED BY THE CONTRACTOR AND SHALL BE DISPOSED OF BY THEM OUTSIDE THE RIGHT-OF-WAY AT THEIR EXPENSE. THE SALVAGE VALUE OF THE REMOVED EQUIPMENT SHALL BE REFLECTED IN THE CONTRACT BID PRICE.

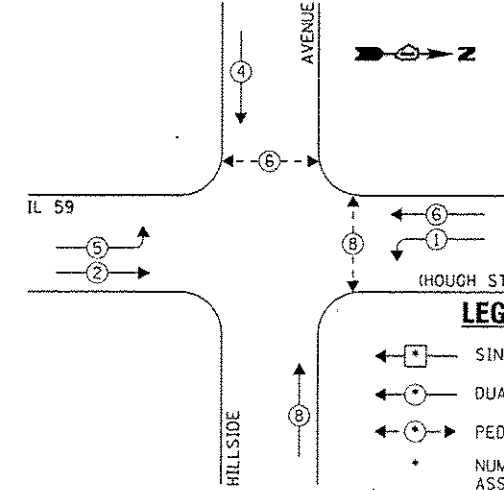
- 4 EACH PEDESTRIAN SIGNAL HEAD, 1-FACE
- 4 EACH PEDESTRIAN PUSH-BUTTON

I.O.O.T. TRAFFIC SIGNAL INSTALLATION ELECTRICAL SERVICE REQUIREMENTS					TOTAL WATTAGE
TYPE	NO. LAMPS	INCAND.	L.E.D.	OPERATION	
SIGNAL (RED)	8	135	17	0.50	68.0
SIGNAL (YELLOW)	8	135	25	0.25	50.0
SIGNAL (GREEN)	8	135	15	0.25	30.0
ARROW	8	135	12	0.10	9.6
PED. SIGNAL	4	90	25	1.00	100.0
CONTROLLER	1	-	100	1.00	100.0
LUMINAIRE	-	-	250	0.50	-
L.E.D. ST. NAME SIGN	-	-	64	0.50	-
VIDEO SYSTEM	-	-	150	1.00	-
BATTERY BACKUP	1	-	25	1.00	25.0
ILLUMINATED SIGN	-	-	25	0.05	-
TOTAL =					382.6

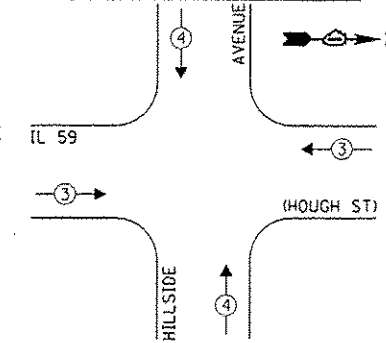
ENERGY COSTS - BILLED TO: IL DEPT. OF TRANSPORTATION  
(ADDRESS) 201 W. CENTER COURT  
(ADDRESS) SCHALMBURG, IL 60196-1096  
ENERGY SUPPLY - CONTACT: DAVE SCHACHT  
PHONE: 630-437-2129  
COMPANY: COMED - OAKBROOK TERRACE

THE TRAFFIC SIGNAL CONTROL EQUIPMENT FOR THIS PROJECT SHALL BE "ECONOLITE" TO MATCH THE EXISTING ADJACENT SYSTEM.

EXISTING CONTROLLER SEQUENCE



EXISTING EMERGENCY VEHICLE PREEMPTION SEQUENCE



LEGEND:

- ◀ (with square) SINGLE ENTRY PHASE
- ◀ (with circle) DUAL ENTRY PHASE
- ◀ (with triangle) PEDESTRIAN PHASE
- NUMBER REFERS TO ASSOCIATED PHASE
- OL OVERLAP

EXISTING EMERGENCY VEHICLE PREEMPTORS	
EMERGENCY VEHICLE PREEMPTOR	3
MOVEMENT	4

EXISTING PHASE DESIGNATION DIAGRAM

FILE NAME = 0168W38-017.dgn	USER NAME = zwillator	DESIGNED - JRD	REVISED -
Default	PLOT SCALE = 28.8000' / 1" =	DRAWN - CW3	REVISED -
	PLOT DATE = 5/24/2013	CHECKED - KLB	REVISED -
		DATE - 05/10/13	REVISED -

STATE OF ILLINOIS  
DEPARTMENT OF TRANSPORTATION

SCHEDULE OF QUANTITIES, CABLE PLAN, PHASE DESIGNATION DIAGRAM, & EMERGENCY VEHICLE PREEMPTION SEQUENCE  
IL 59 (HOUGH ST) AT HILLSIDE AVENUE

F.A. RTE.	SECTION	COUNTY	TOTAL SHEETS	SHEET NO.
VAR	2013-007 TS	COOK	62	17
			CONTRACT NO. 60W38	
[ILLINOIS] FED. AID PROJECT				