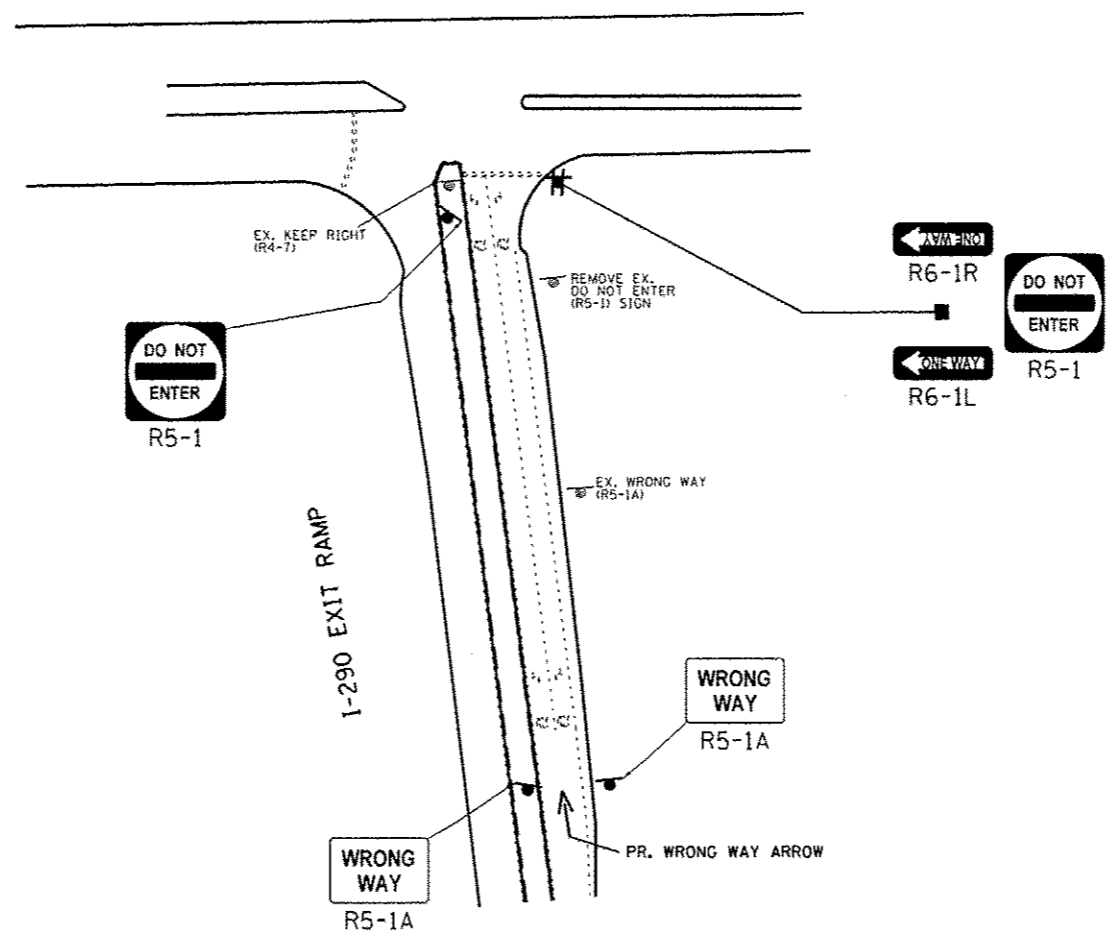




BIESTERFIELD RD



NOTE:
SIGN ASSEMBLIES GREATER THAN 16 SQUARE FEET
REQUIRE TWO TELESCOPING STEEL SIGN SUPPORTS.

COOK COUNTY (NORTH) LOCATION NO. 2

Rev. Sheet 7-22-13

FILE NAME :	USER NAME : Bilgramis	DESIGNED -	REVISED -	STATE OF ILLINOIS DEPARTMENT OF TRANSPORTATION	NORTHBOUND I-290/IL RTE 53 TO BIESTERFIELD RD SIGNAGE PLAN	F.A. RTE.	SECTION	COUNTY	TOTAL SHEETS	SHEET NO.	
c:\pwwork\p\ridot\bilgramis\0348446\0design\shl-ramp\signage-cook.co.dgn	DRAWN -	REVISED -	SCALE:			SHEET	OF	SHEETS	STA.	TO STA.	ILLINOIS FED. AID PROJECT
Default	PLOT SCALE = 100.0000' / 1"	CHECKED -	REVISED -			CONTRACT NO. 60W50					
	PLOT DATE = 7/17/2013	DATE -	REVISED -								