

INDEX OF SHEETS

1. COVER SHEET
2. INDEX OF SHEETS, LIST OF IDOT HIGHWAY STANDARDS, GENERAL NOTES, AND COMMITMENTS
3. SUMMARY OF QUANTITIES
4. COOK COUNTY (NORTH) LOCATION MAP
5. DUPAGE COUNTY LOCATION MAP
6. KANE COUNTY LOCATION MAP
7. LAKE COUNTY LOCATION MAP
8. SIGN LEGEND
9. COOK COUNTY (NORTH) SIGNAGE SCHEDULE
10. DUPAGE COUNTY SIGNAGE SCHEDULE
11. KANE COUNTY SIGNAGE SCHEDULE
12. LAKE COUNTY SIGNAGE SCHEDULE
- 13-46. COOK COUNTY (NORTH) SIGNAGE PLAN
- 47-59. DUPAGE COUNTY SIGNAGE PLAN
- 60-66. KANE COUNTY SIGNAGE PLAN
- 67-77. LAKE COUNTY SIGNAGE PLAN
78. FREEWAY ENTRANCE AND EXIT RAMP CLOSURE DETAILS (TC08)
79. TRAFFIC CONTROL AND PROTECTION FOR SIDE ROADS, INTERSECTIONS, AND DRIVEWAYS (TC10)
80. TRAFFIC CONTROL DETAILS FOR FREEWAY SHOULDER CLOSURES AND PARTIAL RAMP CLOSURE (TC17)
81. DISTRICT 1 TYPICAL PAVEMENT MARKINGS (TC13)
82. WRONG WAY TRAFFIC CONTROL FOR COMPRESSED DIAMOND INTERCHANGE SIGN DETAILS
83. WRONG WAY TRAFFIC CONTROL FOR DIAMOND INTERCHANGE EXIT RAMP SIGN DETAILS
84. WRONG WAY TRAFFIC CONTROL FOR HALF DIAMOND INTERCHANGE EXIT RAMP SIGN DETAILS
85. WRONG WAY TRAFFIC CONTROL FOR MODIFIED DIAMOND INTERCHANGE (DIAMOND EXIT RAMP) SIGN DETAILS
86. WRONG WAY TRAFFIC CONTROL FOR MODIFIED DIAMOND INTERCHANGE (PARTIAL CLOVERLEAFS WITH ISLAND) SIGN DETAILS
87. WRONG WAY TRAFFIC CONTROL FOR MODIFIED DIAMOND INTERCHANGE (PARTIAL CLOVERLEAFS WITHOUT ISLAND) SIGN DETAILS
88. WRONG WAY TRAFFIC CONTROL FOR PARTIAL CLOVERLEAFS WITH ISLAND SIGN DETAILS
89. WRONG WAY TRAFFIC CONTROL FOR PARTIAL CLOVERLEAFS WITHOUT ISLAND SIGN DETAILS
90. WRONG WAY TRAFFIC CONTROL FOR SINGLE POINT DIAMOND INTERCHANGE SIGN DETAILS

LIST OF ILLINOIS DOT HIGHWAY STANDARDS

- 000001 - 06 STANDARD SYMBOLS, ABBREVIATIONS, AND PATTERNS
- 701101 - 03 OFF-ROAD OPERATIONS, MULTILANE, 15' TO 24" FROM PAVEMENT EDGE
- 701400 - 06 APPROACH TO LANE CLOSURE, FREEWAY/EXPRESSWAY
- 701401 - 07 LANE CLOSURE, FREEWAY/EXPRESSWAY
- 701411 - 08 MULTI-LANE, TRAFFIC CONTROL AT ENTRANCE OR EXIT RAMPS
- 701426 - 05 LANE CLOSURE, MULTILANE, INTERMITTENT OR MOVING OPERATIONS FOR SPEED > OR = 45 MPH
- 701427 - 01 LANE CLOSURE, MULTILANE, INTERMITTENT OR MOVING OPERATIONS FOR SPEED < OR = 40 MPH
- 701701 - 08 URBAN LANE CLOSURE, MULTILANE, 1W OR 2W WITH NONTRAVERSABLE MEDIAN
- 701901 - 02 TRAFFIC CONTROL DEVICES
- 720001 - 01 SIGN PANEL MOUNTING DETAILS
- 720006 - 03 SIGN PANEL ERECTION DETAILS
- 728001 - 01 TELESCOPING STEEL SIGN SUPPORT
- 731001 - 01 BASE FOR TELESCOPING STEEL SIGN SUPPORT
- 780001 - 03 TYPICAL PAVEMENT MARKINGS

COMMITMENTS

NO COMMITMENTS FOR THIS PROJECT

GENERAL NOTES

1. THE CONTRACTOR WILL NOT BE ALLOWED TO SET UP A YARD OR FIELD OFFICE ON STATE PROPERTY WITHOUT WRITTEN PERMISSION FROM THE DEPARTMENT.
2. THE CONTRACTOR SHALL BE RESPONSIBLE FOR VERIFYING ALL DIMENSIONS AND CONDITIONS EXISTING IN THE FIELD PRIOR TO CONSTRUCTION AND ORDERING MATERIALS.
3. THE CONTRACTOR SHALL CONTACT THE DISTRICT ONE TRAFFIC CONTROL SUPERVISOR AT (847) 705-4470 A MINIMUM OF 72 HOURS IN ADVANCE OF BEGINNING WORK.
4. FOR ALL DUPAGE AND KANE COUNTY LOCATIONS, THE ENGINEER SHALL CONTACT DON CHIARUGI, THE TRAFFIC FIELD ENGINEER (OR TECHNICIAN) AT (847)741-9857 A MINIMUM OF TWO (2) WEEKS PRIOR TO THE PLACEMENT OF PERMANENT PAVEMENT MARKINGS.
5. FOR ALL LAKE COUNTY LOCATIONS, THE ENGINEER SHALL CONTACT DEBBIE HANLON, THE TRAFFIC FIELD TECHNICIAN AT (847)438-2300 A MINIMUM OF TWO (2) WEEKS PRIOR TO THE PLACEMENT OF PERMANENT PAVEMENT MARKINGS.
6. FOR ALL COOK COUNTY LOCATIONS NORTH OF DEVON AVENUE, THE ENGINEER SHALL CONTACT WALLY CZARNY, THE TRAFFIC FIELD ENGINEER AT (773)685-4342 A MINIMUM OF TWO (2) WEEKS PRIOR TO THE PLACEMENT OF PERMANENT PAVEMENT MARKINGS.
7. FOR ALL COOK COUNTY LOCATIONS SOUTH OF DEVON AVENUE, THE ENGINEER SHALL CONTACT JERNARD PERKINS, THE TRAFFIC FIELD ENGINEER AT (708)524-2145 A MINIMUM OF TWO (2) WEEKS PRIOR TO THE PLACEMENT OF PERMANENT PAVEMENT MARKINGS.
8. THE CONTRACTOR SHALL BE REQUIRED TO PROVIDE ACCESS TO ADJUTING PROPERTY AT ALL TIMES DURING THE CONSTRUCTION OF THIS PROJECT.
9. DO NOT SCALE PLANS FOR CONSTRUCTION DIMENSIONS.
10. NIGHTTIME FLAGGERS OR WORKERS SHALL BE EQUIPPED WITH A FLUORESCENT ORANGE OR FLORESCENT YELLOW/GREEN VEST MEETING THE REQUIREMENTS OF ANSI/ISEA 107-2004 FOR CONSPICUITY CLASS 3 GARMENTS.
11. THERMOPLASTIC AND POLYUREA PAVEMENT MARKINGS TO BE PLACED ON HMA AND CONCRETE SURFACES RESPECTIVELY.
12. ANY SOIL DISTURBED AS A RESULT OF THIS PROJECT SHALL BE DISPOSED OF ON SITE AND NEATLY GRADED TO THE SATISFACTION OF THE ENGINEER, AT NO ADDITIONAL COST TO THE CONTRACT.
13. ALL SIGN LOCATIONS MUST BE FIELD VERIFIED AND ADJUSTED AS NEEDED BY THE RESIDENT ENGINEER TO PROVIDE CLEAR VISIBILITY OF THE SIGNS. THE RESIDENT ENGINEER SHALL COORDINATE ALL FINAL SIGN LOCATIONS WITH THE BUREAU OF TRAFFIC.
14. TRAFFIC CONTROL AND PROTECTION FOR ALL LOCATIONS (EXPRESSWAY AND NON-EXPRESSWAY ROUTES) SHOWN IN THE PLANS SHALL BE INCLUDED IN THE COST FOR TRAFFIC CONTROL AND PROTECTION (EXPRESSWAYS).

Rev. Sheet 7-22-13

FILE NAME =	USER NAME = Bilgramisp	DESIGNED -	REVISED -	STATE OF ILLINOIS DEPARTMENT OF TRANSPORTATION	INDEX OF SHEETS, LIST OF IDOT STANDARDS, AND GENERAL NOTES	F.A. RTE.	SECTION	COUNTY	TOTAL SHEETS	SHEET NO.
ei:\pwwork\pwwork\idot\bilgramisp\07140446\08\sign\shc\Temp\Signage-CookCo.dgn	DRAWN -	REVISED -				2013-024-SG	VARIOUS	90	2	
Default	PLOT SCALE = 100.0000' / 1" =	CHECKED -	REVISED -			CONTRACT NO. 60W50				
	PLOT DATE = 7/17/2013	DATE -	REVISED -			SCALE:	SHEET	OF	SHEETS	STA.

COOK COUNTY (NORTH)	SIGN PANEL TYPE 2						SIGN PANEL TYPE 1																									
	DO NOT ENTER (R5-1)		KEEP RIGHT (R4-7)		INTERSTATE 3 DIGITS (M1-1)		CARDINAL DIRECTION (M3-1,2,3,4)		DIRECTIONAL ARROW (M6-2A)		STOP (R1-1)		WRONG WAY (R5-1A)		ONE WAY (R6-1L)		ONE WAY (R6-1R)		NO RIGHT TURN (R3-1)		NO LEFT TURN (R3-2)		RETROREFLECTIVE SIGN SUPPORT PANEL		TELESCOPING STEEL SIGN SUPPORT		BASE FOR TELESCOPING STEEL SIGN SUPPORT	REMOVE SIGN ASSEMBLY TYPE A	REMOVE SIGN ASSEMBLY TYPE B	REMOVE SIGN PANEL TYPE 1		
	QTY	SQ FT	QTY	SQ FT	QTY	SQ FT	QTY	SQ FT	QTY	SQ FT	QTY	SQ FT	QTY	SQ FT	QTY	SQ FT	QTY	SQ FT	QTY	SQ FT	QTY	SQ FT	QTY	SQ FT	QTY	SQ FT	QTY/TOTAL FT	(EA)	(EA)	(EA)	(SQ FT)	
SB I290/IL RTE 53 TO IL RTE 72 (LOC. 1)	2	32	0	0	0	0	0	0	0	0	0	0	0	2	17.5	2	13.5	2	13.5	0	0	0	0	6	5.00	6	90	2	2	0	0	
NB I290/IL RTE 53 TO IL RTE 72 (LOC. 1)	2	32	0	0	0	0	0	0	0	0	0	0	0	2	17.5	2	13.5	2	13.5	0	0	0	0	6	5.00	6	90	2	2	0	0	
SB I290/IL RTE 53 TO BIESTERFIELD RD (LOC. 2)	2	32	0	0	0	0	0	0	0	0	0	0	0	2	17.5	2	13.5	2	13.5	0	0	0	0	6	5.00	6	100	0	0	0	18	
NB I290/IL RTE 53 TO BIESTERFIELD RD (LOC. 2)	2	32	0	0	0	0	0	0	0	0	0	0	0	2	17.5	1	6.75	1	6.75	0	0	0	0	5	4.17	5	76	1	0	0	9	
SB IL RTE 53 TO US RTE 14 (NORTHWEST HWY) (LOC. 3)	2	32	1	20	0	0	0	0	0	0	0	0	0	2	17.5	2	13.5	2	13.5	0	0	0	0	6	5.00	8	114	4	1	0	15	
NB IL RTE 53 TO US RTE 14 (NORTHWEST HWY) (LOC. 3)	2	32	1	20	0	0	0	0	0	0	0	0	0	2	17.5	2	13.5	2	13.5	0	0	0	0	6	5.00	8	114	4	1	0	15	
SB IL RTE 53 TO IL RTE 62 (ALGONQUIN RD) (LOC. 4)	1	16	0	0	0	0	0	0	0	0	0	0	0	2	17.5	1	6.75	1	6.75	0	0	0	0	8	6.67	6	90	2	1	0	9	
NB IL RTE 53 TO IL RTE 62 (ALGONQUIN RD) (LOC. 4)	1	16	0	0	0	0	0	0	0	0	0	0	0	2	17.5	1	6.75	1	6.75	0	0	0	0	5	4.17	4	55	2	0	0	9	
SB US RTE 41 (SKOKIE HWY) TO LAKE COOK RD (LOC. 5)	0	0	0	0	0	0	0	0	0	0	0	0	0	2	17.5	2	13.5	2	13.5	0	0	0	0	2	1.67	4	54	0	0	0	3	
NB US RTE 41 (SKOKIE HWY) TO LAKE COOK RD (LOC. 5)	0	0	0	0	0	0	0	0	0	0	0	0	0	2	17.5	2	13.5	2	13.5	0	0	0	0	2	1.67	4	54	0	0	0	0	
SB I-90 TO W LAWRENCE AVE (LOC. 6)	0	0	0	0	0	0	0	0	0	0	0	0	0	2	17.5	1	6.75	1	6.75	0	0	0	0	2	1.67	4	44	2	0	0	0	
NB I-90 TO W LAWRENCE AVE (LOC. 6)	0	0	0	0	0	0	0	0	0	0	0	0	0	2	17.5	2	13.5	2	13.5	0	0	0	0	2	1.67	4	44	2	0	0	0	
WB I-290 TO 17TH AVE (LOC. 7)	4	64	0	0	0	0	0	0	0	0	0	0	0	2	17.5	2	13.5	1	6.75	0	0	0	0	9	7.50	8	124	2	0	1	0	
EB I-290 TO 17TH AVE (LOC. 7)	4	64	0	0	0	0	0	0	0	0	0	0	0	2	17.5	2	13.5	1	6.75	0	0	0	0	9	7.50	8	124	2	0	1	0	
WB I-290 TO 1ST AVE (LOC. 8)	4	64	0	0	0	0	0	0	0	0	0	0	0	2	17.5	2	13.5	2	13.5	0	0	0	0	10	8.33	9	149	3	0	0	0	
EB I-290 TO 1ST AVE (LOC. 8)	2	32	0	0	0	0	0	0	0	0	0	0	0	3	26.25	1	6.75	1	6.75	0	0	0	0	8	6.67	5	80	0	0	0	6.75	
WB I-90 TO IL RTE 43 (HARLEM AVE) (LOC. 9)	4	64	0	0	0	0	0	0	0	0	0	0	0	4	35	1	6.75	1	6.75	0	0	0	0	8	6.67	8	128	0	0	2	6.75	
EB I-90 TO IL RTE 43 (HARLEM AVE) (LOC. 9)	2	32	0	0	0	0	0	0	0	0	0	0	0	3	26.25	0	0	0	0	0	0	0	7	5.83	5	74	3	0	2	0		
WB I-90 TO NAGLE AVE (LOC. 10)	2	32	0	0	0	0	0	0	0	0	0	0	0	2	17.5	2	13.5	2	13.5	0	0	0	0	7	5.83	6	104	0	0	2	0	
EB I-90 TO NAGLE AVE (LOC. 10)	2	32	0	0	0	0	0	0	0	0	0	0	0	2	17.5	0	0	0	0	0	0	0	5	4.17	4	64	1	0	0	0		
WB I-290 TO OAKLEY BLVD / WESTERN AVE (LOC. 11)	0	0	0	0	0	0	0	0	0	0	0	0	0	4	35	0	0	0	0	0	0	0	8	6.67	4	64	1	0	2	0		
EB I-290 TO OAKLEY BLVD / WESTERN AVE (LOC. 11)	2	32	0	0	0	0	0	0	0	0	0	0	0	2	17.5	1	6.75	0	0	0	0	0	6	5.00	5	86	1	0	0	0		
SB I-90/94 TO TAYLOR ST (LOC. 12)	1	16	0	0	0	0	0	0	0	0	0	0	0	4	35	2	13.5	2	13.5	0	0	0	0	6	5.00	7	84	2	0	0	9	
I-290 AND IL RTE 43 (HARLEM AVE) (LOC. 13)	2	32	0	0	2	22.5	2	9	2	8.75	0	0	0	2	17.5	0	0	0	0	0	0	0	0	0	0.00	0	0	0	0	0	0	
I-90 AND IL RTE 72 (LEE ST) (LOC. 14)	0	0	0	0	0	0	0	0	0	0	0	0	0	0	0	0	0	0	0	0	0	1	9	0	0.00	1	16	0	0	0	0	
I-90/94 (DAN RYAN EXPY) TO W 18TH ST (LOC. 15)	0	0	0	0	0	0	0	0	0	0	0	0	0	2	17.5	0	0	0	0	0	0	0	2	1.67	2	20	2	0	0	0	0	
I-94 (EDENS EXPY) AND IL RTE 43 (WAUKEGAN RD) (LOC. 16)	0	0	0	0	0	0	0	0	0	0	0	0	0	2	17.5	0	0	0	0	0	0	0	1	9	0	0.00	1	46	1	0	0	0
I-290 AND S 9TH AVE (LOC. 17)	4	64	0	0	0	0	0	0	0	0	2	18	4	35	2	13.5	1	6.75	0	0	0	0	10	8.33	10	168	0	2	2	0	0	
NB IL RTE 53 TO KIRCHOFF RD (LOC. 18)	0	0	0	0	0	0	0	0	0	0	0	0	0	2	17.5	2	13.5	2	13.5	0	0	0	0	5	4.17	5	79	0	1	0	0	
WB I-190 TO N RIVER RD (LOC. 19)	2	32	1	20	0	0	0	0	0	0	0	0	0	2	17.5	2	13.5	2	13.5	0	0	0	0	6	5.00	8	109	5	0	0	18	
WB I-290 TO US RTE 12/45 (MANNHEIM RD) (LOC. 20)	2	32	0	0	0	0	0	0	0	0	0	0	0	2	17.5	2	13.5	2	13.5	0	0	0	0	8	6.67	6	90	2	0	0	18	
EB I-290 TO US RTE 12/45 (MANNHEIM RD) (LOC. 20)	2	32	0	0	0	0	0	0	0	0	0	0	0	2	17.5	2	13.5	2	13.5	0	0	0	0	7	5.83	6	100	0	0	1	9	
I-290 TO 25TH AVE (LOC. 21)	2	32	0	0	0	0	0	0	0	0	0	0	0	6	52.5	0	0	0	0	0	0	0	9	7.50	8	62	0	0	0	0	0	
SB IL RTE 53 TO IL RTE 68 (DUNDEE RD) (LOC. 22)	2	32	0	0	0	0	0	0	0	0	0	0	0	2	17.5	2	13.5	2	13.5	0	0	0	0	8	6.67	6	85	3	2	0	0	
NB IL RTE 53 TO IL RTE 68 (DUNDEE RD) (LOC. 22)	2	32	0	0	0	0	0	0	0	0	0	0	0	2	17.5	2	13.5	2	13.5	0	0	0	0	8	6.67	6	90	2	1	0	9	
TOTAL	59	944	3	60	2	22.5	2	9	2	8.75	2	18	82	717.5	47	317.3	43	290.3	0	0	2	18	202	168.333	193	2871	51	13	13	154.5		

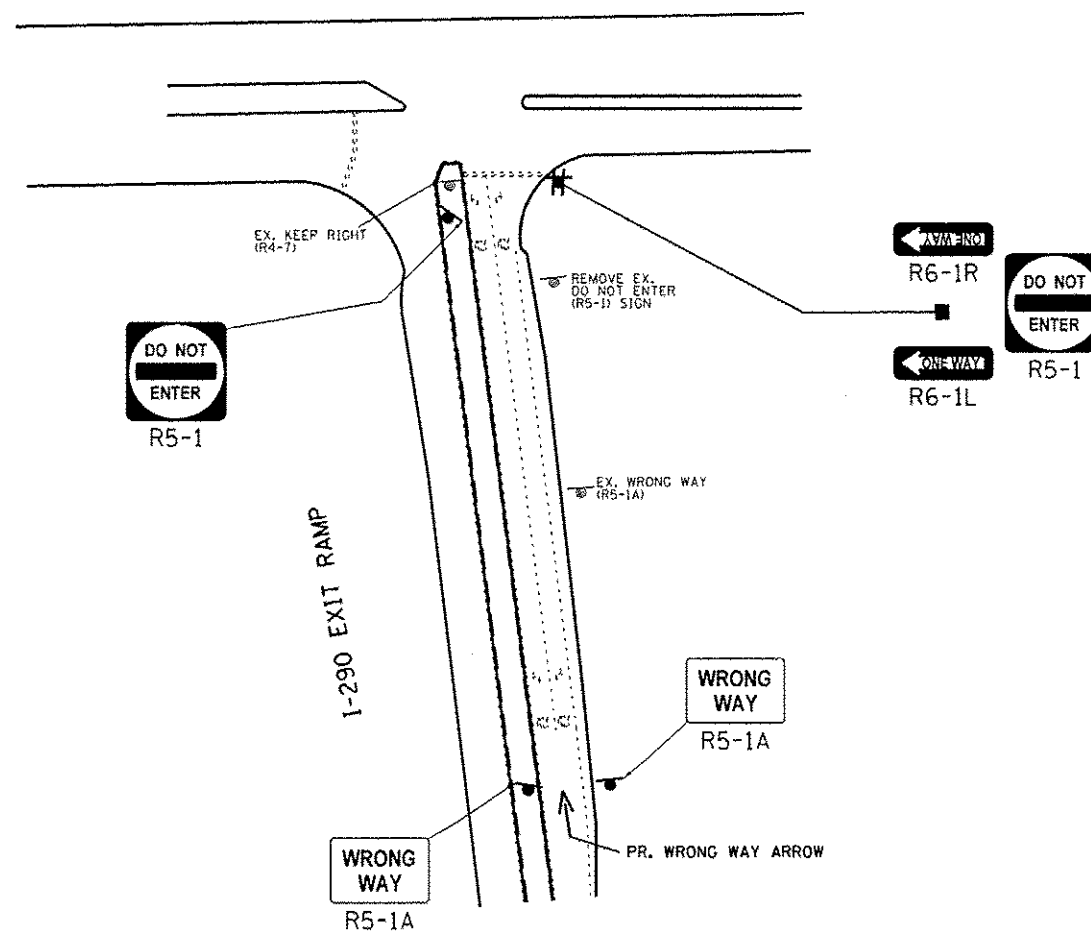
NOTE:
RETROREFLECTIVE SIGN PANEL SHALL BE USED ON SIGN SUPPORTS
FOR 'DO NOT ENTER' AND 'WRONG WAY' SIGNS

Rev. Sheet 7-22-13

FILE NAME: c:\p\work\p\idoc\bilgromise\0340445\0	USER NAME: Bilgromise	DESIGNED: -	REVISED: -	STATE OF ILLINOIS DEPARTMENT OF TRANSPORTATION	COOK COUNTY (NORTH) SIGN SCHEDULE OF QUANTITIES	SCALE: SHEET OF SHEETS STA. TO STA.	F.A. RTE.	SECTION	COUNTY	TOTAL SHEETS	SHEET NO.
Default	PLOT SCALE: 1/8"=1'-0"	CHECKED: -	REVISED: -					2013-024-SG	VARIOUS	90	9
	PLOT DATE: 7/17/2013	DATE: -	REVISED: -					CONTRACT NO. 60W50			
								ILLINOIS FED. AID PROJECT			



BIESTERFIELD RD

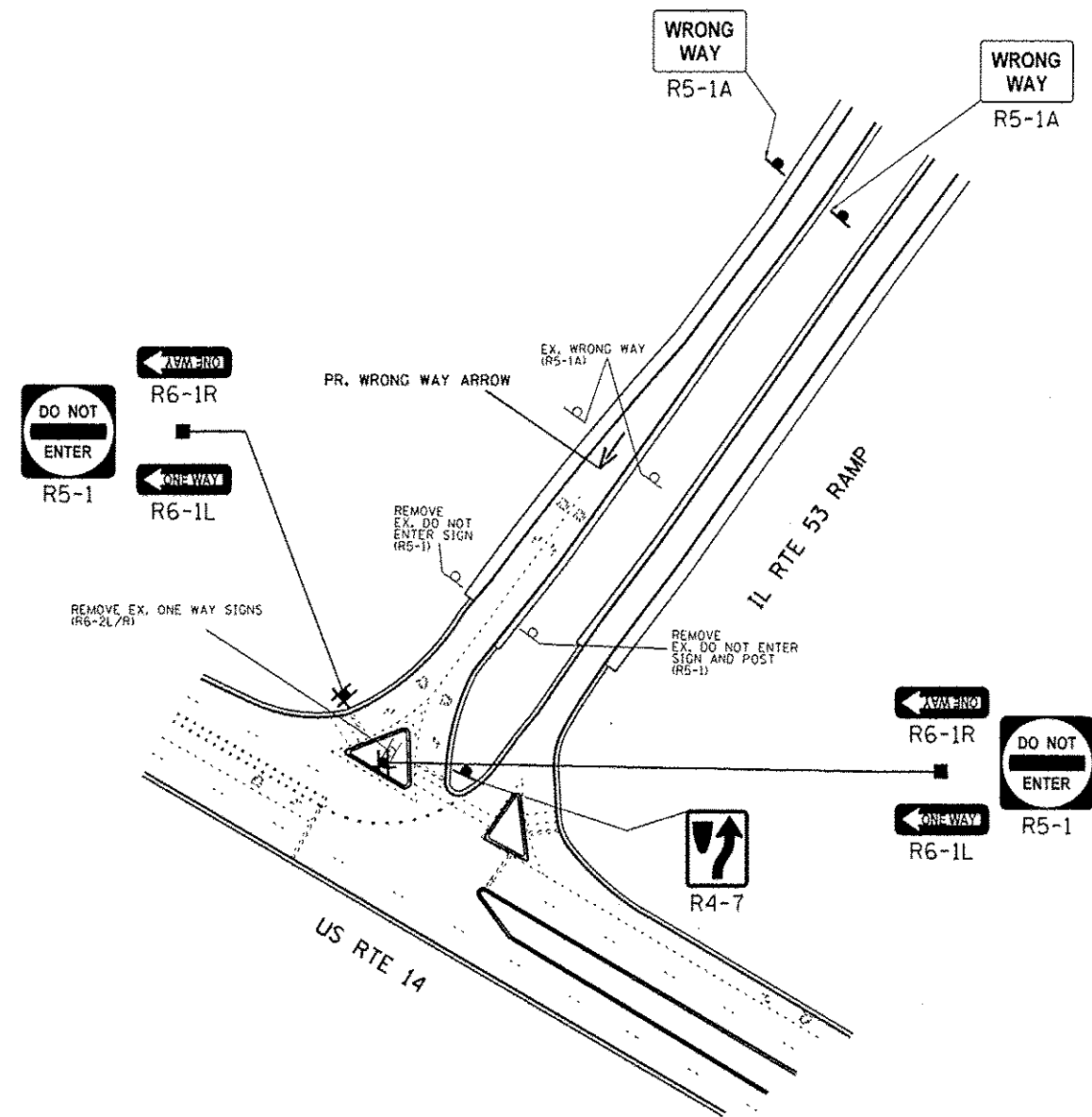


NOTE:
SIGN ASSEMBLIES GREATER THAN 16 SQUARE FEET
REQUIRE TWO TELESCOPING STEEL SIGN SUPPORTS.

COOK COUNTY (NORTH) LOCATION NO. 2

Rev. Sheet 7-22-13

FILE NAME :	USER NAME : Bilgramis	DESIGNED -	REVISED -	STATE OF ILLINOIS DEPARTMENT OF TRANSPORTATION	NORTHBOUND I-290/IL RTE 53 TO BIESTERFIELD RD SIGNAGE PLAN			F.A. RTE.	SECTION	COUNTY	TOTAL SHEETS	SHEET NO.
c:\pwwork\p\ridot\bilgramis\0348446\0design\shl-ramp\signage-cook.co.dgn		DRAWN -	REVISED -								2013-024-SG	VARIOUS
Default	PLOT SCALE = 100.0000' / 1"	CHECKED -	REVISED -					CONTRACT NO. 60W50				
	PLOT DATE = 7/17/2013	DATE -	REVISED -					ILLINOIS FED. AID PROJECT				

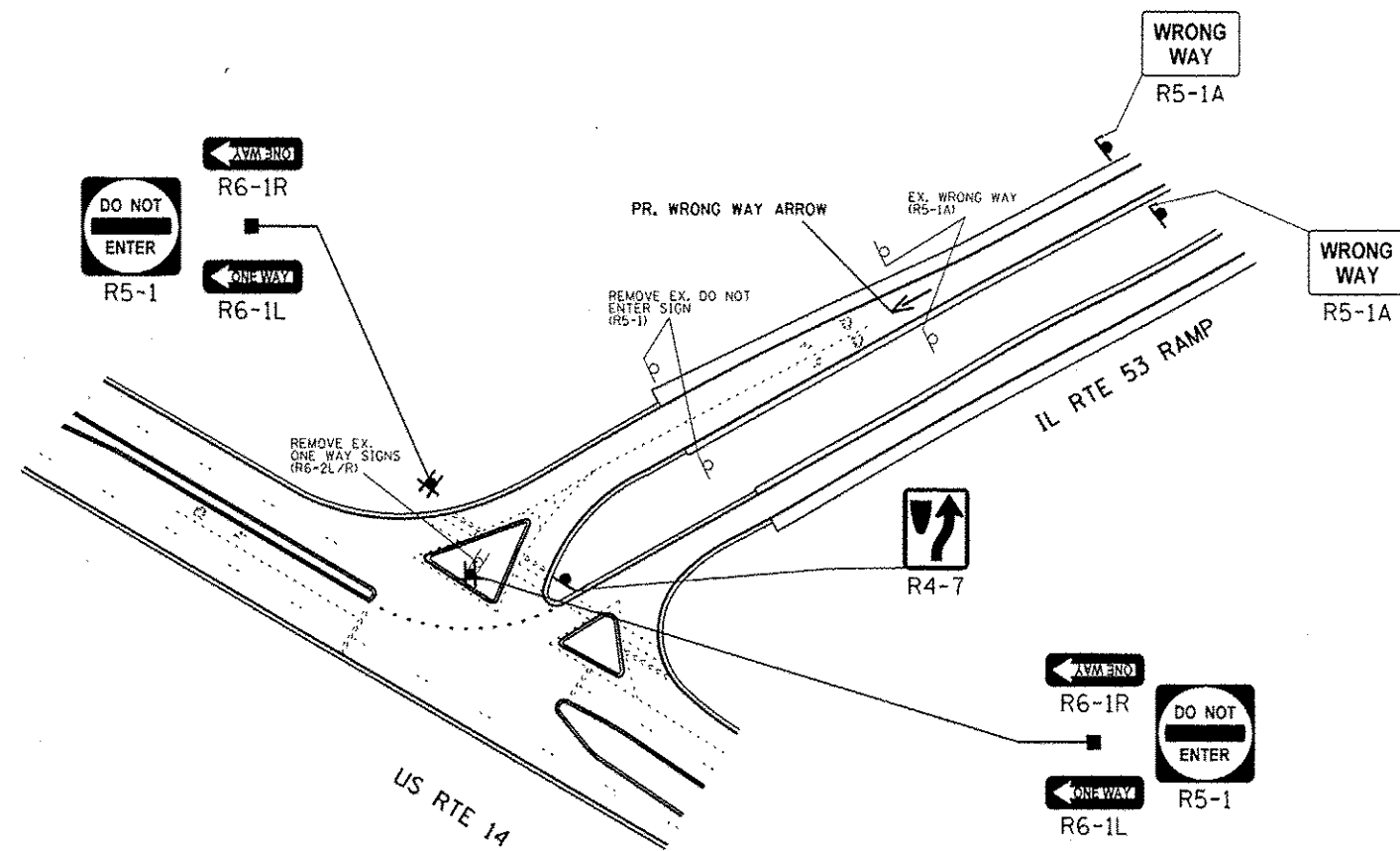


NOTE:
SIGN ASSEMBLIES GREATER THAN 16 SQUARE FEET
REQUIRE TWO TELESCOPING STEEL SIGN SUPPORTS.

COOK COUNTY (NORTH) LOCATION NO. 3

Rev. Sheet 7-22-13

FILE NAME : c:\pwwork\pwwork\bilgronise\08340445\0	USER NAME : Bilgronise signsht+RampSignage-CookCo.dgn	DESIGNED -	REVISED -	STATE OF ILLINOIS DEPARTMENT OF TRANSPORTATION	SOUTHBOUND IL RTE 53 TO US RTE 14 (NORTHWEST HWY) SIGNAGE PLAN	F.A. RTE.	SECTION	COUNTY	TOTAL SHEETS	SHEET NO.				
Default	PLOT SCALE = 1/8" = 100'	DRAWN -	REVISED -			SCALE:	SHEET	OF	SHEETS	STA.	TO STA.	VARIOUS	90	17
	PLOT DATE = 7/17/2013	CHECKED -	REVISED -			CONTRACT NO. 60W50								
		DATE -	REVISED -			ILLINOIS FED. AID PROJECT								

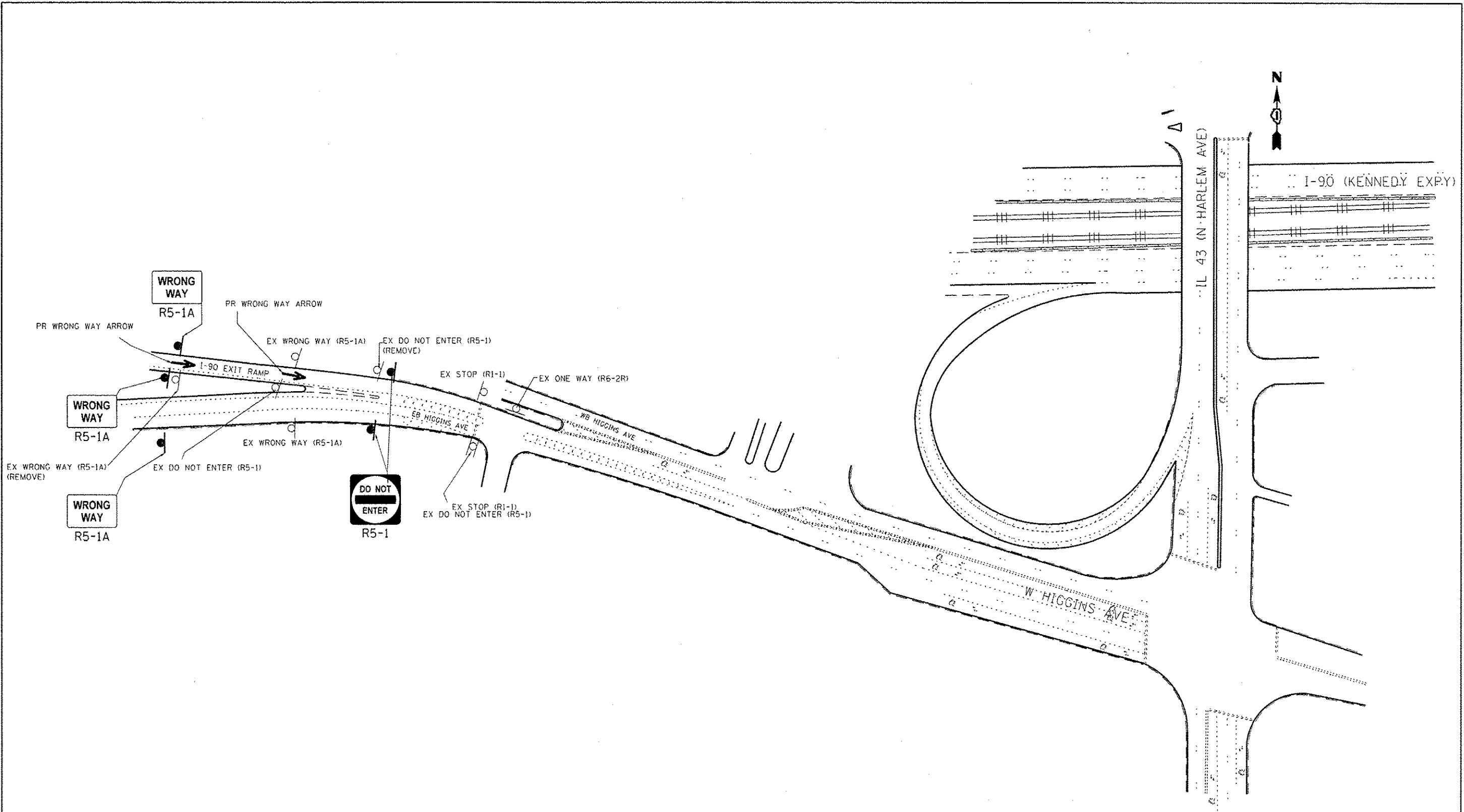


NOTE:
SIGN ASSEMBLIES GREATER THAN 16 SQUARE FEET
REQUIRE TWO TELESCOPING STEEL SIGN SUPPORTS.

COOK COUNTY (NORTH) LOCATION NO. 3

Rev. 7-22-13

FILE NAME : c:\p\work\p\dot\bilgramso\0340446\Design\shp\RampSignage-CookCo.dgn	USER NAME : Bilgramso	DESIGNED -	REVISED -	STATE OF ILLINOIS DEPARTMENT OF TRANSPORTATION	NORTHBOUND IL RTE 53 TO US RTE 14 (NORTHWEST HWY) SIGNAGE PLAN		F.A. RTE.	SECTION	COUNTY	TOTAL SHEETS	SHEET NO.	
Default	PLOT SCALE : 1/8"=1'-0"	DRAWN -	REVISED -					2013-024-SG	VARIOUS	90	18	
	PLOT DATE : 7/17/2013	CHECKED -	REVISED -		SCALE:	SHEET	OF	SHEETS	STA.	TO STA.	CONTRACT NO. 60W50	
		DATE -	REVISED -								<small>ILLINOIS FED. AID PROJECT</small>	



NOTE:
SIGN ASSEMBLIES GREATER THAN 16 SQUARE FEET
REQUIRE TWO TELESCOPING STEEL SIGN SUPPORTS.

COOK COUNTY (NORTH) LOCATION NO. 9

Rev. Sheet 7-22-13

FILE NAME :	USER NAME : Btlgrms10	DESIGNED -	REVISED -
c:\pwork\p1dot\blgrms10\20130446\0	Designsht-RampSignage-CookCo.dgn	DRAWN -	REVISED -
Default	PLOT SCALE = 100.0000' / in.	CHECKED -	REVISED -
	PLOT DATE = 7/17/2013	DATE -	REVISED -

**STATE OF ILLINOIS
DEPARTMENT OF TRANSPORTATION**

**EASTBOUND I-90 (KENNEDY EXPY) TO IL RTE 43 (HARLEM AVENUE)
SIGNAGE PLAN**

SCALE: SHEET OF SHEETS STA. TO STA.

F.A. RTE.	SECTION	COUNTY	TOTAL SHEETS	SHEET NO.
	2013-024-SG	VARIOUS	90	29
CONTRACT NO. 60W50			ILLINOIS FED. AID PROJECT	