

**STATE OF ILLINOIS**  
**DEPARTMENT OF TRANSPORTATION**  
**DIVISION OF HIGHWAYS**

F.A. RTE.	SECTION	COUNTY	TOTAL SHEETS	SHEET NO.
	2013-024-SG	VARIOUS*	90	1
ILLINOIS			CONTRACT NO. 60W50	

\*COOK, DUPAGE, KANE, AND LAKE

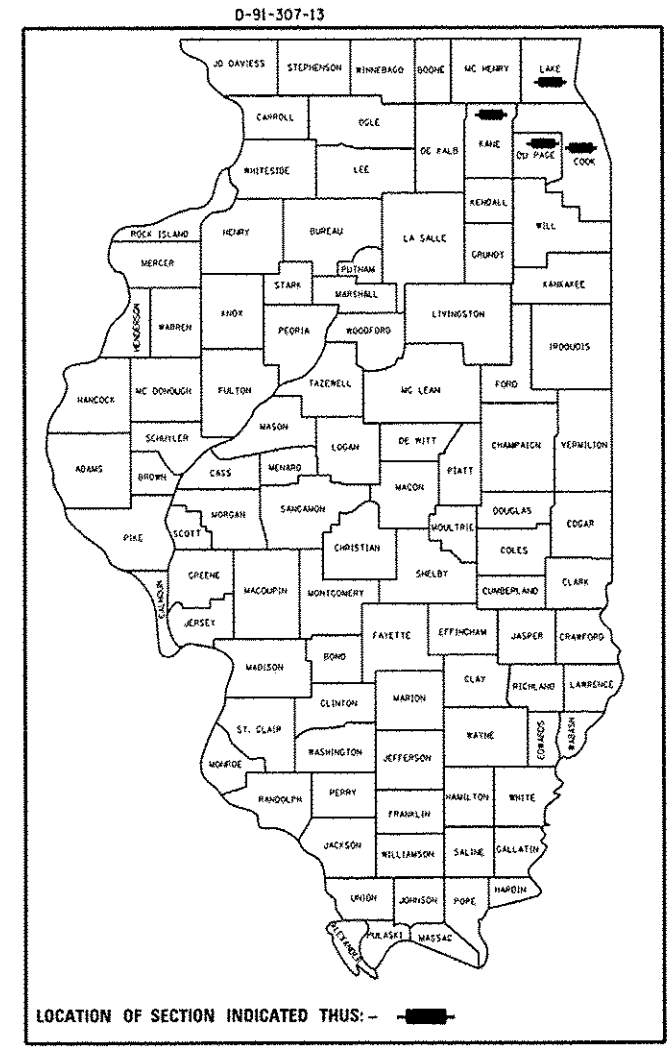
FOR INDEX OF SHEETS, SEE SHEET NO. 2

# PROPOSED HIGHWAY PLANS

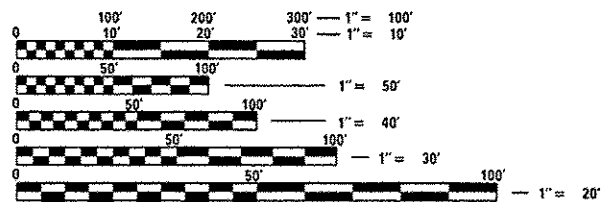
THIS PROJECT IS LOCATED IN THE MUNICIPALITIES OF ADDISON, ARLINGTON HEIGHTS, BROADVIEW, CHICAGO, CLARENDON HILLS, DOWNERS GROVE, ELGIN, ELK GROVE VILLAGE, ELMHURST, FOREST PARK, GURNEE, GREEN OAKS, HIGHLAND PARK, HILLSIDE, HINSDALE, LIBERTYVILLE, LINCOLNSHIRE, LOMBARD, MAYWOOD, MONTGOMERY, OAK PARK, PALATINE, PARK CITY, ROLLING MEADOWS, SCHAUMBURG, WAUKEGAN, WESTCHESTER, WESTMONT, AND UNINCORPORATED AREAS IN COOK, DUPAGE AND KANE COUNTIES

**VARIOUS ROUTES**  
**SECTION 2013-024-SG**  
**VARIOUS - NORTH (WRONG WAY DRIVING)**  
**SIGNING**

*VARIOUS* (COOK, DUPAGE, KANE, AND LAKE COUNTIES)  
**C-91-307-13**



FOR LOCATION MAPS, SEE SHEETS 4 - 7



FULL SIZE PLANS HAVE BEEN PREPARED USING STANDARD ENGINEERING SCALES. REDUCED SIZED PLANS WILL NOT CONFORM TO STANDARD SCALES. IN MAKING MEASUREMENTS ON REDUCED PLANS, THE ABOVE SCALES MAY BE USED.

J.U.L.I.E.  
 JOINT UTILITY LOCATION INFORMATION FOR EXCAVATION  
 1-800-892-0123  
 OR 811

PROJECT ENGINEER: DAN WILGREEN (847) 705-4240  
 PROJECT MANAGER: KEN ENG (847) 705-4247

CONTRACT NO. 60W50

STATE OF ILLINOIS  
 DEPARTMENT OF TRANSPORTATION  
 DIVISION OF HIGHWAYS

SUBMITTED 5/20 2013

*John F. ...*  
 DEPUTY DIRECTOR OF HIGHWAYS, REGION ENGINEER

June 28 2013  
*John D. Baranzelli, PE, Ia*  
 ENGINEER OF DESIGN AND ENVIRONMENT

June 28 2013  
*Chris ...*  
 DIRECTOR OF HIGHWAYS, CHIEF ENGINEER

**PRINTED BY THE AUTHORITY  
OF THE STATE OF ILLINOIS**