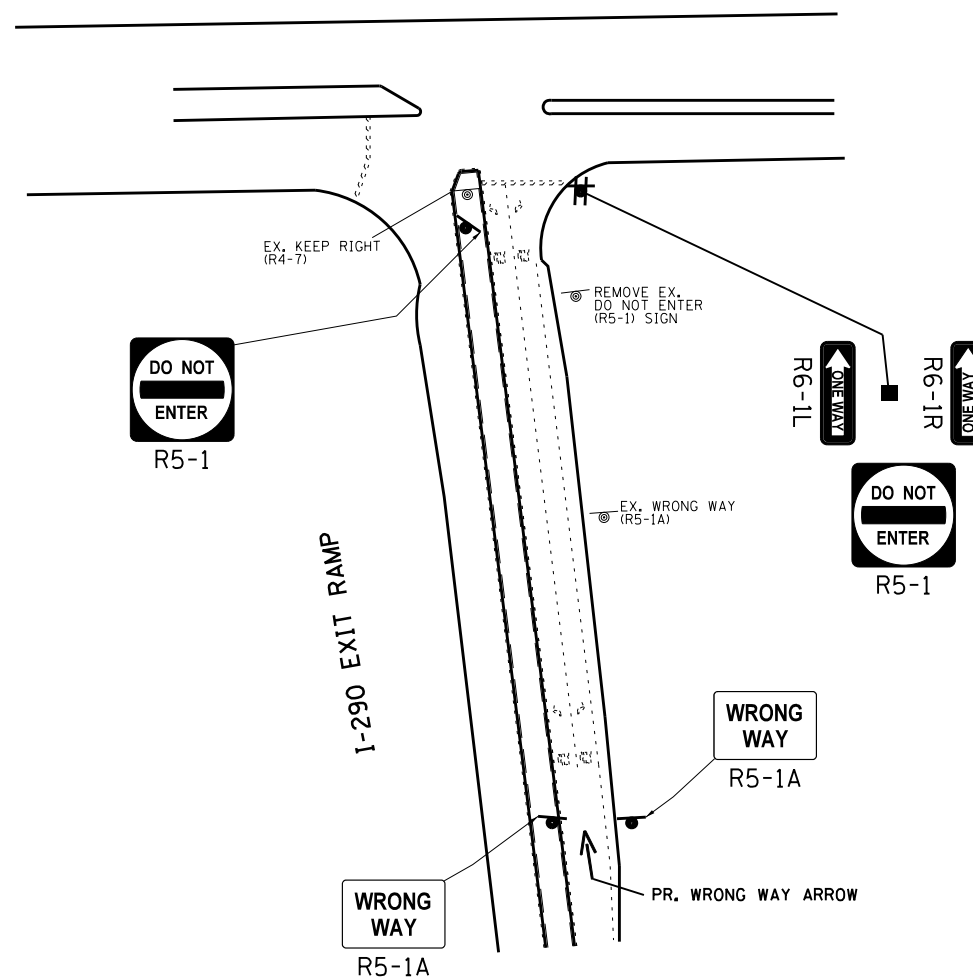




BIESTERFIELD RD



COOK COUNTY (NORTH) LOCATION NO. 2

FILE NAME =	USER NAME = SMITHCJ	DESIGNED -	REVISED -
et:\pwork\pwork\smithcjd0340446\Design\sh-t-RampSignage-CookCo.dgn		DRAWN -	REVISED -
Default	PLOT SCALE = 100.0000' / in.	CHECKED -	REVISED -
	PLOT DATE = 5/24/2013	DATE -	REVISED -

STATE OF ILLINOIS
DEPARTMENT OF TRANSPORTATION

NORTHBOUND I-290/IL RTE 53 TO BIESTERFIELD RD
SIGNAGE PLAN

SCALE: SHEET OF SHEETS STA. TO STA.

F.A. RTE.	SECTION	COUNTY	TOTAL SHEETS	SHEET NO.
	2013-024-SG	COOK	90	16
CONTRACT NO. 60W50			ILLINOIS FED. AID PROJECT	