

F.A. RTE.	SECTION	COUNTY	TOTAL SHEETS	SHEET NO.
VAR.	2013-032 RS	COOK	37	1
		ILLINOIS	CONTRACT NO. 60W68	

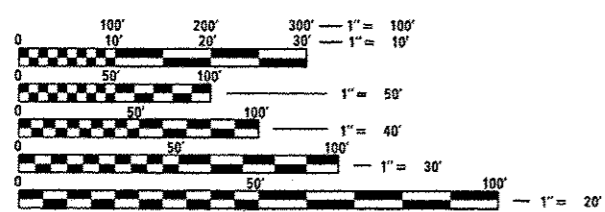
STATE OF ILLINOIS  
DEPARTMENT OF TRANSPORTATION  
DIVISION OF HIGHWAYS

**PROPOSED  
HIGHWAY PLANS**

VARIOUS ROUTES  
SECTION: 2013-032 RS  
VARIOUS LOCATIONS IN NORTHERN COOK COUNTY  
INTERMITTENT RESURFACING  
COOK COUNTY  
C-91-352-13

FOR INDEX OF SHEETS, SEE SHEET NO. 2

- THIS PROJECT IS LOCATED IN:
- THE VILLAGE OF ARLINGTON HEIGHTS
  - THE VILLAGE OF BARRINGTON
  - THE VILLAGE OF BARRINGTON HILLS
  - THE VILLAGE OF BARTLETT
  - THE VILLAGE OF FRANKLIN PARK
  - THE VILLAGE OF GLENCOE
  - THE VILLAGE OF HANOVER PARK
  - THE VILLAGE OF HOFFMAN ESTATES
  - THE VILLAGE OF INVERNESS
  - THE VILLAGE OF KENILWORTH
  - THE VILLAGE OF MELROSE PARK
  - THE VILLAGE OF MOUNT PROSPECT
  - THE VILLAGE OF NILES
  - THE VILLAGE OF NORTHBROOK
  - THE VILLAGE OF NORTHFIELD
  - THE VILLAGE OF SCHAUMBURG
  - THE VILLAGE OF SKOKIE
  - THE VILLAGE OF STREAMWOOD
  - THE VILLAGE OF SOUTH BARRINGTON
  - THE VILLAGE OF WHEELING
  - THE VILLAGE OF WILMETTE
  - THE VILLAGE OF WINNETKA
  - THE CITY OF DES PLAINES
  - THE CITY OF ELGIN
  - THE CITY OF EVANSTON
  - THE CITY OF PARK RIDGE
  - THE CITY OF PROSPECT HEIGHTS
  - THE CITY OF ROLLING MEADOWS



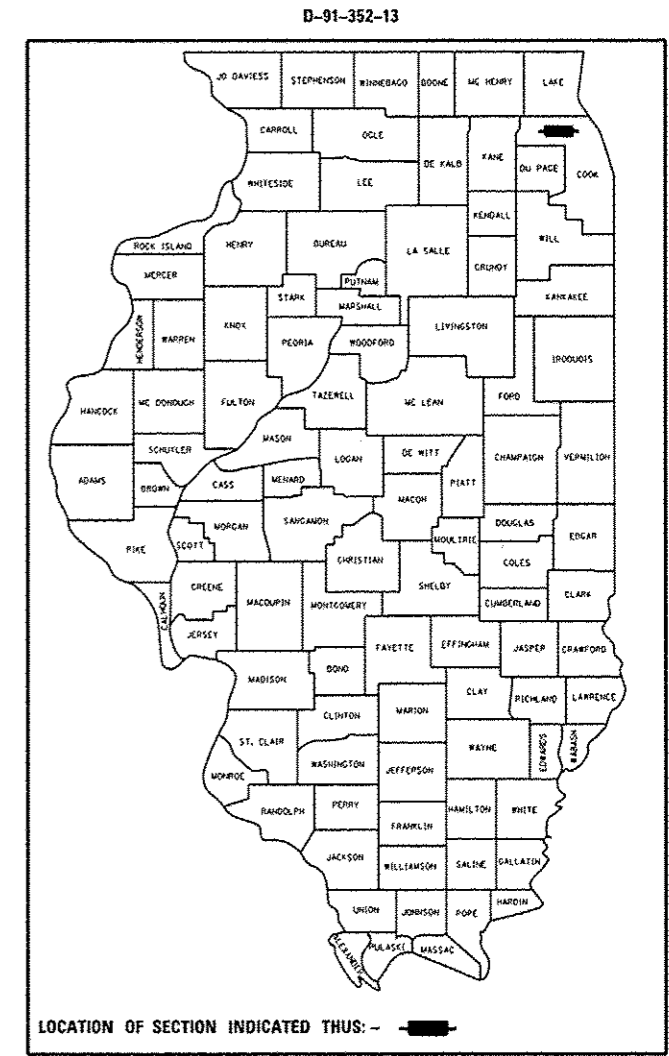
FULL SIZE PLANS HAVE BEEN PREPARED USING STANDARD ENGINEERING SCALES. REDUCED SIZED PLANS WILL NOT CONFORM TO STANDARD SCALES. IN MAKING MEASUREMENTS ON REDUCED PLANS, THE ABOVE SCALES MAY BE USED.

J.U.L.I.E.  
JOINT UTILITY LOCATION INFORMATION FOR EXCAVATION  
1-800-892-0123  
OR 811

PROJECT ENGINEER: DANIEL WILGREEN (847) 705-4240  
PROJECT MANAGER: KEN ENG (847) 705-4247

CONTRACT NO. 60W68

FOR GENERAL LOCATION MAP, SEE SHEET NO. 4



STATE OF ILLINOIS  
DEPARTMENT OF TRANSPORTATION  
DIVISION OF HIGHWAYS

SUBMITTED 5/20 2013

*John D. Baranzoni*  
DEPUTY DIRECTOR OF HIGHWAYS, REGION ENGINEER

June 28 2013  
*John D. Baranzoni* P.E. *bl*  
acting ENGINEER OF DESIGN AND ENVIRONMENT

June 28 2013  
*Omer Osman* P.E. *bl*  
DIRECTOR OF HIGHWAYS, CHIEF ENGINEER

PRINTED BY THE AUTHORITY  
OF THE STATE OF ILLINOIS