

F.A.U. RTE.	SECTION	COUNTY	TOTAL SHEETS	SHEET NO.
N/A	10-00086-00-SW	LAKE/COOK	12	1
CONTRACT NO. 63842				
ILLINOIS FED. AID PROJECT				

STATE OF ILLINOIS
DEPARTMENT OF TRANSPORTATION
DIVISION OF HIGHWAYS

PLANS FOR PROPOSED
FEDERAL AID HIGHWAY

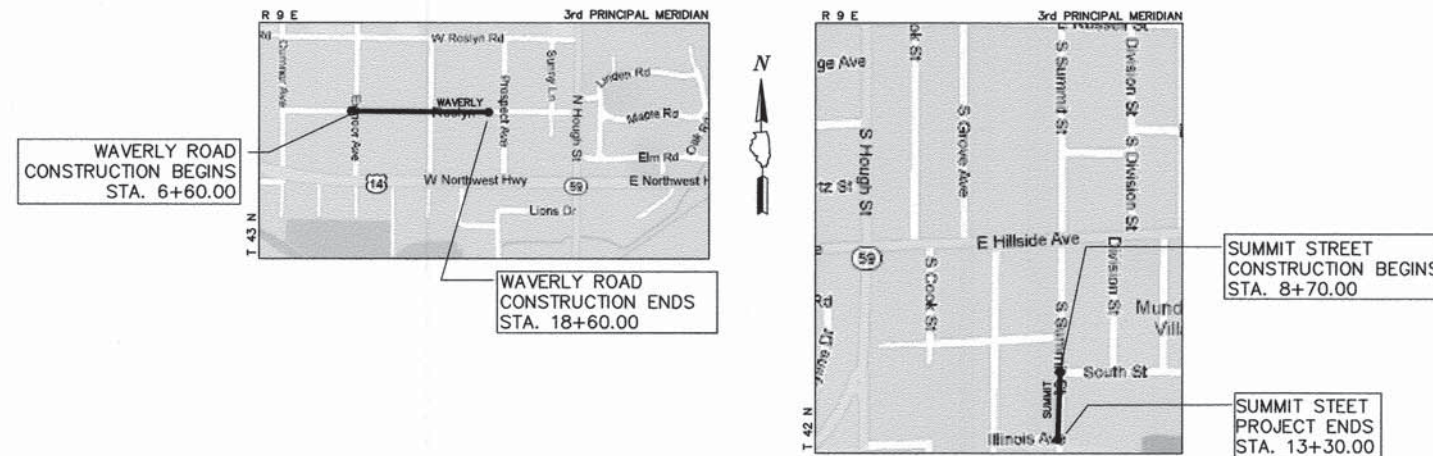
WAVERLY ROAD: EXMOOR AVE TO 130' WEST OF PROSPECT
SUMMIT STREET: SOUTH STREET TO ILLINOIS AVE
SAFE ROUTE TO SCHOOLS

SECTION: 10-00086-00-SW
PROJECT NO. SRTS-4009(011)

VILLAGE OF BARRINGTON
LAKE COUNTY & COOK COUNTY
JOB NO. C-40-002-10

- INDEX OF SHEETS
1. COVER SHEET, INDEX OF SHEETS
 2. GENERAL NOTES & STATE STANDARDS
 3. SUMMARY OF QUANTITIES
 4. TYPICAL SECTIONS
 5. DEMOLITION PLAN - WAVERLY AVENUE
 6. DEMOLITION PLAN - SUMMIT STREET
 - 7-8. SITE PLAN - WAVERLY AVENUE
 9. SITE PLAN - SUMMIT STREET
 - 10-12. DETAILS

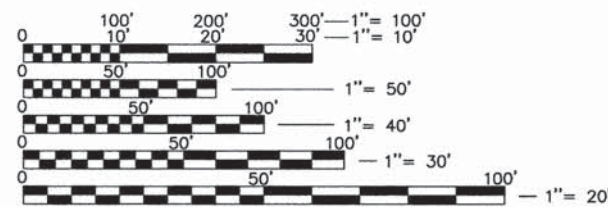
SUMMIT ADT = 1,100 VPD
WAVERLY ADT = 700 VPD
POSTED SPEED LIMIT = 25 MPH
ROAD CLASSIFICATION = LOCAL ROADWAY



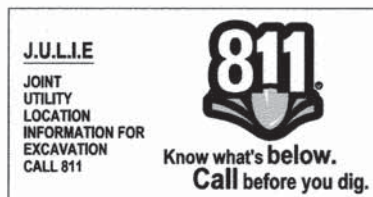
LOCATION MAP
(NOT TO SCALE)

PROJECT INFORMATION
GROSS AND NET LENGTH = 1,660 FT = 0.314 MI

FULL SIZE PLANS HAVE BEEN PREPARED USING STANDARD ENGINEERING SCALES. REDUCED SIZED PLANS WILL NOT CONFORM TO STANDARD SCALES. IN MAKING MEASUREMENTS ON REDUCED PLANS, THE BELOW SCALES MAY BE USED.



CONTRACT NO. 63842



CONTRACTOR IS RESPONSIBLE FOR CONTACTING J.U.L.I.E. AT 1-800-892-0123 AND MUST ACQUIRE A DIG NUMBER A MINIMUM OF 72 HOURS PRIOR TO ANY WORK BEING DONE.

GHA GEWALT HAMILTON
ASSOCIATES, INC.

850 Forest Edge Drive ■ Vernon Hills, IL. 60061

STATE OF ILLINOIS
DEPARTMENT OF TRANSPORTATION
DIVISION OF HIGHWAYS

APPROVED: *May 24, 2013* 2013
Jeff Hawler
VILLAGE OF BARRINGTON - VILLAGE MANAGER

PASSED: *MAY 28, 2013* 2013
C. J. Holt
DISTRICT ONE ENGINEER OF LOCAL ROADS AND STREETS

RELEASING FOR BID
BASED ON LIMITED REVIEW: *May 28* 2013
John Entmann
DEPUTY DIRECTOR OF HIGHWAYS, REGION ONE ENGINEER

PROFESSIONAL ENGINEER'S SIGNATURE & SEAL

Leo X. Morand

LEO X. MORAND, P.E.
EXPIRES: 11-30-13

SEAL

PRINTED BY THE AUTHORITY
OF THE STATE OF ILLINOIS

PROGRAM AND OFFICE ENGINEER: CHARLES RIDDLE, P.E. (847)-705-4406 SCHAUMBURG, IL

FILE NAME
4251.001-DT(100T)

GENERAL NOTES

A-1 THE ILLINOIS DEPARTMENT OF TRANSPORTATION "STANDARD SPECIFICATIONS FOR ROAD AND BRIDGE CONSTRUCTION" LATEST EDITION, THE "STANDARD SPECIFICATIONS FOR WATER AND SEWER MAIN CONSTRUCTION IN ILLINOIS" LATEST EDITION, PROJECT SPECIFICATIONS, ALL APPLICABLE REQUIREMENTS OF THE ILLINOIS ENVIRONMENTAL PROTECTION AGENCY, MUNICIPALITY, ORDINANCES OF AUTHORITIES HAVING JURISDICTION AND ALL ADDENDA THERE SHALL GOVERN THIS WORK.

A-2 ALL REFERENCES TO "ENGINEER" SHALL BE INTERPRETED TO MEAN THE RESIDENT ENGINEER.

A-3 THE CONTRACTOR SHALL VERIFY ALL DIMENSIONS, AND CONDITIONS AFFECTING THEIR WORK WITH THE ACTUAL CONDITIONS AT THE JOB SITE. IN ADDITION, THE CONTRACTOR MUST VERIFY THE ENGINEERS' LINE AND GRADES. IF THERE ARE ANY DISCREPANCIES FROM WHAT IS SHOWN ON THE CONSTRUCTION PLANS, STANDARD SPECIFICATIONS AND/OR SPECIAL DETAILS, THE CONTRACTOR SHALL SECURE WRITTEN INSTRUCTION FROM THE ENGINEER PRIOR TO PROCEEDING WITH ANY PART OF THE WORK AFFECTED BY OMISSION OR DISCREPANCIES. FAILING TO SECURE SUCH INSTRUCTION, THE CONTRACTOR WILL BE CONSIDERED TO HAVE PROCEEDED AT HIS OWN RISK AND EXPENSE. IN THE EVENT OF ANY DOUBT OR QUESTION ARISING WITH RESPECT TO THE TRUE MEANING OF THE CONSTRUCTION PLANS OR SPECIFICATIONS, THE DECISION OF THE ENGINEER SHALL BE FINAL AND CONCLUSIVE.

A-4 IT IS THE CONTRACTOR'S RESPONSIBILITY TO ASCERTAIN EXISTING FIELD CONDITIONS PRIOR TO BIDDING ON THE PROJECT.

A-5 EASEMENTS FOR THE EXISTING UTILITIES, BOTH PUBLIC AND PRIVATE, AND UTILITIES WITHIN PUBLIC RIGHTS-OF-WAY ARE SHOWN ON THE PLANS ACCORDING TO AVAILABLE RECORDS. THE CONTRACTOR SHALL BE RESPONSIBLE FOR DETERMINING THE EXACT LOCATION IN THE FIELD OF THESE UTILITY LINES AND THEIR PROTECTION FROM DAMAGE DUE TO CONSTRUCTION OPERATIONS. IF EXISTING UTILITY LINES OF ANY NATURE ARE ENCOUNTERED WHICH CONFLICT IN LOCATION WITH NEW CONSTRUCTION, THE CONTRACTOR SHALL NOTIFY THE ENGINEER SO THAT THE CONFLICT MAY BE RESOLVED.

A-6 SAW CUTTING OF PAVEMENTS, SIDEWALK, ETC. SHALL BE TO FULL DEPTH AND SHALL RESULT IN A CLEAN STRAIGHT EDGE ON THE PORTION REMAINING. ALL SAW CUTTING SHALL BE CONSIDERED INCLUDED IN THE COST OF THE ITEM REMOVED.

A-7 THE CONTRACTOR SHALL PROTECT AND CAREFULLY PRESERVE ALL SECTION OR SUBSECTION MONUMENTS, PROPERTY CORNERS, AND REFERENCE MARKERS UNTIL THE ENGINEER, OR AN AUTHORIZED SURVEYOR HAS WITNESSED OR OTHERWISE REFERENCED THEIR LOCATIONS.

A-8 WHENEVER, DURING CONSTRUCTION OPERATIONS, LOOSE MATERIAL IS DEPOSITED IN THE FLOW LINE OF GUTTERS, DRAINAGE STRUCTURES, DITCHES, ETC. SUCH THAT THE NATURAL FLOW LINE OF WATER IS OBSTRUCTED, THE LOOSE MATERIAL WILL BE REMOVED AT THE CLOSE OF EACH WORKING DAY. AT THE CONCLUSION OF CONSTRUCTION OPERATION, ALL DRAINAGE STRUCTURES AND FLOW LINES SHALL BE FREE FROM DIRT AND DEBRIS. THIS WORK SHALL BE CONSIDERED INCLUDED IN THE COST OF THE CONTRACT. THE CONTRACTOR'S FAILURE TO PROVIDE THE ABOVE WILL PRECLUDE ANY POSSIBLE ADDED COMPENSATION REQUESTED DUE TO DELAYS OR UNSUITABLE MATERIALS CREATED AS A RESULT THEREOF.

STORM SEWERS, WATER MAINS, AND UTILITIES

B-1 THE CONTRACTOR IS RESPONSIBLE FOR CONTACTING JULIE PRIOR TO THE START OF CONSTRUCTION.

B-2 THE CONTRACTOR SHALL BE RESPONSIBLE FOR THE PROTECTION OF ALL UNDERGROUND AND SURFACE UTILITIES EVEN THOUGH THEY MIGHT NOT BE SHOWN ON THE PLANS. ANY UTILITY PROPERTY DAMAGED DURING CONSTRUCTION SHALL BE REPAIRED OR REPLACED TO THE SATISFACTION OF THE ENGINEER AT THE CONTRACTOR'S EXPENSE.

B-3 THE VILLAGE OF BARRINGTON SHALL BE NOTIFIED A MINIMUM 3 DAYS PRIOR TO THE START OF CONSTRUCTION AT 847-673-1540.

B-4 THE CONTRACTOR SHALL ENSURE THAT ALL WATER SYSTEM VALVE VAULTS, AND SANITARY SEWER MANHOLES REMAIN READILY ACCESSIBLE TO THE VILLAGE FOR EMERGENCY OPERATIONS. THE LOCATIONS OF ALL WATER AND SANITARY FACILITIES SHALL BE MARKED AND READILY VISIBLE AT ALL TIMES.

TRAFFIC CONTROL

D-1 SEE TRAFFIC CONTROL HIGHWAY STANDARDS CONCERNING TRAFFIC CONTROL AND PROTECTION.

DEBRIS REMOVAL

MATERIALS RESULTING FROM THE REMOVAL OF ASPHALT SURFACES, UTILITY ADJUSTMENTS, RESTORATION WORK, ETC. SHALL BE REMOVED AT THE END OF EACH DAY TO AN APPROVED SITE.

DRIVEWAY CLOSING

IT WILL BE THE CONTRACTOR'S RESPONSIBILITY TO NOTIFY RESIDENTS AND THE ENGINEER WHEN ACCESS TO THEIR DRIVEWAYS WILL BE TEMPORARILY CLOSED DUE TO SIDEWALK REPLACEMENT, AND/OR DRIVEWAY REPLACEMENT. AT LOCATIONS WHERE THE DRIVEWAY IS SCHEDULED TO BE REMOVED, THE CONTRACTOR SHALL CONTACT THE BUSINESS/HOMEOWNER 24 HOURS PRIOR TO REMOVING THE CURB, SIDEWALK, OR DRIVE APPROACH. EVERY EFFORT SHALL BE MADE TO ACCOMMODATE ACCESS TO THESE PROPERTIES. THE CONTRACTOR SHALL NOT BE ALLOWED TO CLOSE A DRIVEWAY FOR MORE THAN 1 DAY UNLESS THE DRIVEWAY IS CLOSED FOR THE PURPOSE OF CURING CONCRETE PLACED AS A PART OF THIS CONTRACT. THE CONTRACTOR SHALL BE RESPONSIBLE FOR MAINTAINING THE BARRICADES TO PREVENT TRAFFIC FROM USING THE DRIVEWAYS DURING THIS PERIOD.

STREET SWEEPING AND PREPARATION

THE CONTRACTOR SHALL BE RESPONSIBLE FOR SWEEPING AND CLEANING STREETS OF ANY DEBRIS AND MATERIAL THAT HAS ACCUMULATED AS A RESULT OF THE CONSTRUCTION ACTIVITY. A MECHANICAL SWEEPER, MECHANICALLY DRIVEN AIR AND HANDWORK WITH SHOVEL AND BROOM SHALL BE UTILIZED TO PROVIDE A CLEAN STREET FOR THE MOTORING PUBLIC. WITHIN 24 HOURS OF PLACING PRIME COAT AND THE LAYING OF HMA, THE CONTRACTOR SHALL SWEEP THE PAVEMENT AND REMOVE STANDING WATER, EARTH, WEEDS, LEAVES, DIRT, CONSTRUCTION DEBRIS AND ALL LOOSE MATERIAL.

HIGHWAY STANDARDS:

- 000001-06 STANDARD SYMBOLS, ABBREVIATIONS, AND PATTERNS
- 424001-07 PERPENDICULAR CURB RAMPS
- 442201-03 CLASS C & D PATCHES
- 542301-03 PRECAST REINFORCED CONCRETE FLARED END SECTION
- 602001-02 CATCH BASIN TYPE A
- 602011-02 CATCH BASIN TYPE C
- 602301-03 INLET TYPE A
- 602401-03 MANHOLE TYPE A
- 602601-02 PRECAST REINFORCED CONCRETE FLAT SLAB TOP
- 602701-02 MANHOLE STEPS
- 604001-03 FRAME AND LIDS TYPE 1
- 604036-02 GRATE TYPE 8
- 606001-05 CONCRETE CURB TYPE B AND COMBINATION CONC CURB AND GUTTER
- 606101-04 TYPE A GUTTER (INLET, OUTLET & ENTRANCE)
- 701001-02 OFF-RD OPERATIONS, 2L, 2W, MORE THAN 15' AWAY
- 701006-04 OFF-RD OPERATIONS, 2L, 2W 15' TO 24" FROM PAVEMENT EDGE
- 701301-04 LANE CLOSURE, 2L, 2W, SHORT TIME OPERATIONS
- 701311-03 LANE CLOSURE, 2L, 2W, MOVING OPERATIONS-DAY ONLY
- 701501-06 LANE CLOSURE, 2L, 2W, UNDIVIDED
- 701801-05 SIDEWALK, CORNER OR CROSSWALK CLOSURE
- 701901-02 TRAFFIC CONTROL DEVICES

DISTRICT 1 STANDARDS

- BD-07 STORM SEWER CONNECTION TO EXISTING SEWER
- TC-10 TRAFFIC CONTROL AND PROTECTION PLAN FOR SIDE ROADS, INTERSECTIONS AND DRIVEWAYS

FILE NAME =	USER NAME = BJW
4251-001-DT(DOT).dwg	
PLOT SCALE = 1:1	
PLOT DATE = 5/9/13	

DESIGNED - BJW	REVISED -
DRAWN - BJW	REVISED -
CHECKED - LXM	REVISED -
DATE - 5/9/13	REVISED -

**STATE OF ILLINOIS
DEPARTMENT OF TRANSPORTATION**

**VILLAGE OF BARRINGTON - SAFE ROUTE TO SCHOOLS
GENERAL NOTES & STATE STANDARDS**

SCALE N.T.S. SHEET NO. 2 OF 12 SHEETS STA. TO STA.

FAU RTE	SECTION	COUNTY	TOTAL SHEETS	SHEET NO.
N/A	10-00086-00-SW	LAKE/COOK	12	2
CONTRACT #:			63842	
ILLINOIS FED. AID PROJECT				

SUMMARY OF QUANTITIES

Code #	Item	Unit	CONSTRUCTION TYPE CODE 0021 Quantity	CONSTRUCTION TYPE CODE 0042 Quantity
* 20100110	TREE REMOVAL (6 TO 15 UNITS DIAMETER)	UNIT	14	
* 20100210	TREE REMOVAL (OVER 15 UNITS DIAMETER)	UNIT	16	
* 20101100	TREE TRUNK PROTECTION	EACH	21	
* 20101200	TREE ROOT PRUNING	EACH	13	
* 20101300	TREE PRUNING (1 TO 10 INCH DIAMETER)	EACH	5	
* 20101350	TREE PRUNING (OVER 10 INCH DIAMETER)	EACH	4	
20200100	EARTH EXCAVATION	CU YD	391	
20400800	FURNISHED EXCAVATION	CU YD	207	
20800150	TRENCH BACKFILL	CU YD	312	
* 21101615	TOPSOIL FURNISH AND PLACE, 4"	SQ YD	2,983	
* 25000400	NITROGEN FERTILIZER NUTRIENT	POUND	38	
* 25000500	PHOSPHORUS FERTILIZER NUTRIENT	POUND	38	
* 25000600	POTASSIUM FERTILIZER NUTRIENT	POUND	38	
* 25200100	SODDING	SQ YD	2,983	
* 25200200	SUPPLEMENTAL WATERING	UNIT	45	
28000305	TEMPORARY DITCH CHECKS	FOOT	15	
28000400	PERMETER EROSION BARRIER	FOOT	1,120	
28000500	INLET AND PIPE PROTECTION	EACH	22	
35100300	AGGREGATE BASE COURSE, TYPE A 4"	SQ YD	1,675	
35100500	AGGREGATE BASE COURSE, TYPE A 6"	SQ YD	124	
40201000	AGGREGATE FOR TEMPORARY ACCESS	TON	55	
* 40800050	INCIDENTAL HOT-MIX ASPHALT SURFACING	TON	15	
42400200	PORTLAND CEMENT CONCRETE SIDEWALK 5 INCH	SQ FT	7,297	
42400400	PORTLAND CEMENT CONCRETE SIDEWALK 7 INCH	SQ FT	1,037	
44000200	DRIVEWAY PAVEMENT REMOVAL	SQ YD	405	
44000500	COMBINATION CURB AND GUTTER REMOVAL	FOOT	380	
* 44201705	CLASS D PATCHES, TYPE II, 5 INCH	SQ YD	15	
* 44201709	CLASS D PATCHES, TYPE III, 5 INCH	SQ YD	20	
* 44201711	CLASS D PATCHES, TYPE IV, 5 INCH	SQ YD	450	
44213204	TIE BARS 3/4"	EACH	199	
50105220	PIPE CULVERT REMOVAL	FOOT	375	
542A0217	PIPE CULVERTS, CLASS A, TYPE 1 12"	FOOT	150	
54213657	PRECAST REINFORCED CONCRETE FLARED END SECTIONS 12"	EACH	9	
550A2320	STORM SEWERS, RUBBER GASKET, CLASS A, TYPE 1 12"	FOOT	108	
550A2520	STORM SEWERS, RUBBER GASKET, CLASS A, TYPE 2 12"	FOOT	149	
550A2530	STORM SEWERS, RUBBER GASKET, CLASS A, TYPE 2 15"	FOOT	323	
55100500	STORM SEWER REMOVAL 12"	FOOT	35	
* 56400300	FIRE HYDRANTS TO BE ADJUSTED	EACH	1	
* 56500600	DOMESTIC WATER SERVICE BOXES TO BE ADJUSTED	EACH	1	
60200205	CATCH BASINS, TYPE A, 4'-DIAMETER, TYPE 1 FRAME, CLOSED LID	EACH	4	

Code #	Item	Unit	CONSTRUCTION TYPE CODE 0021 Quantity	CONSTRUCTION TYPE CODE 0042 Quantity
60206905	CATCH BASINS, TYPE C, TYPE 1 FRAME, OPEN LID	EACH	1	
60218400	MANHOLES, TYPE A, 4'-DIAMETER, TYPE 1 FRAME, CLOSED LID	EACH	1	
60221100	MANHOLES, TYPE A, 5'-DIAMETER, TYPE 1 FRAME, CLOSED LID	EACH	1	
60234200	INLETS, TYPE A, TYPE 1 FRAME, OPEN LID	EACH	1	
60236200	INLETS, TYPE A, TYPE 8 GRATE	EACH	2	
60250200	CATCH BASINS TO BE ADJUSTED	EACH	1	
60500050	REMOVING CATCH BASINS	EACH	1	
60603800	COMBINATION CONCRETE CURB AND GUTTER, TYPE B-6.12	FOOT	495	
67100100	MOBILIZATION	L SUM	1	
70102620	TRAFFIC CONTROL AND PROTECTION, STANDARD 701501	L SUM	1	
70102640	TRAFFIC CONTROL AND PROTECTION, STANDARD 701801	L SUM	1	
* 72400310	REMOVE SIGN PANEL - TYPE 1	SQ FT	13	
* 72400710	RELOCATE SIGN PANEL - TYPE 1	SQ FT	13	
* 72900100	METAL POST - TYPE A	FOOT	26	
* B20000124	TREE, ACER CAMPESTRE, 3" CALIPER, TREE FORM, BALLED AND	EACH	2	
X4240800	DETECTABLE WARNINGS (SPECIAL)	SQ FT	40	
* Z0004510	HOT-MIX ASPHALT DRIVEWAY PAVEMENT, 3"	SQ YD	309	
Z0013798	CONSTRUCTION LAYOUT	L SUM	1	
Z0076600	TRAINEES	HOUR		500
Z0076604	TRAINEES TRAINING PROGRAM GRADUATE	HOUR		500

* SPECIALTY ITEMS

FILE NAME =
4251-001-DT(DDT).dwg

USER NAME = BJW
PLOT SCALE = 1:1
PLOT DATE = 5/9/13

DESIGNED - BJW
DRAWN - BJW
CHECKED - LXM
DATE - 5/9/13

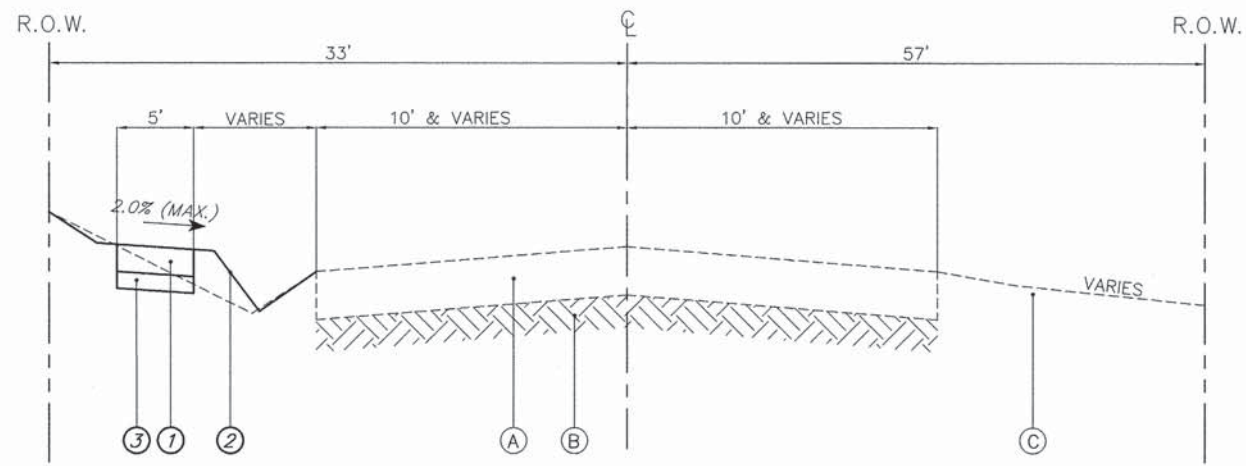
REVISED -
REVISED -
REVISED -
REVISED -

**STATE OF ILLINOIS
DEPARTMENT OF TRANSPORTATION**

**VILLAGE OF BARRINGTON - SAFE ROUTE TO SCHOOLS
SUMMARY OF QUANTITIES**

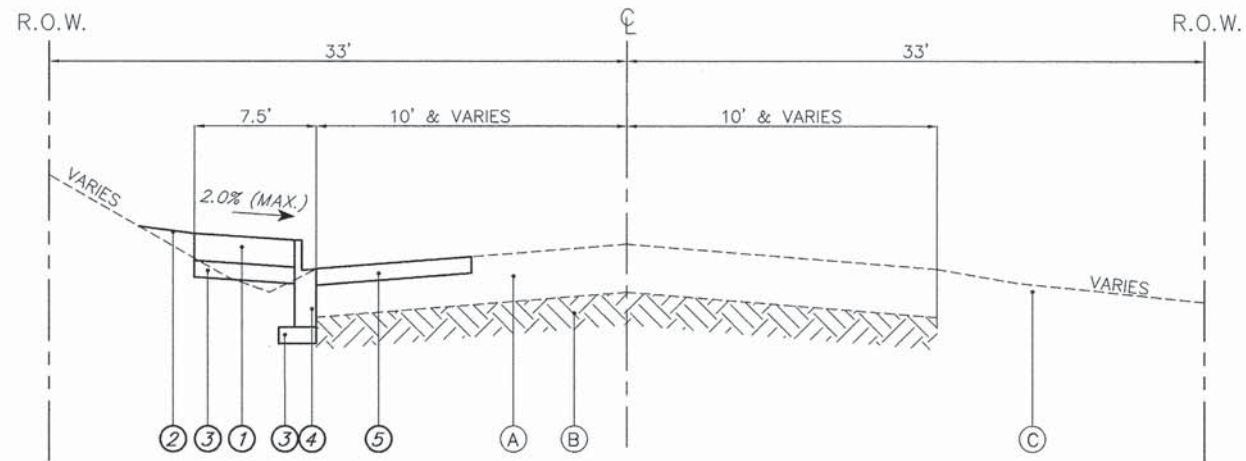
SCALE N.T.S. SHEET NO. 3 OF 12 SHEETS STA. TO STA.

FAU RTE N/A	SECTION 10-00086-00-SW	COUNTY LAKE/COOK	TOTAL SHEETS 12	SHEET NO. 3
CONTRACT #			63842	
ILLINOIS FED. AID PROJECT				



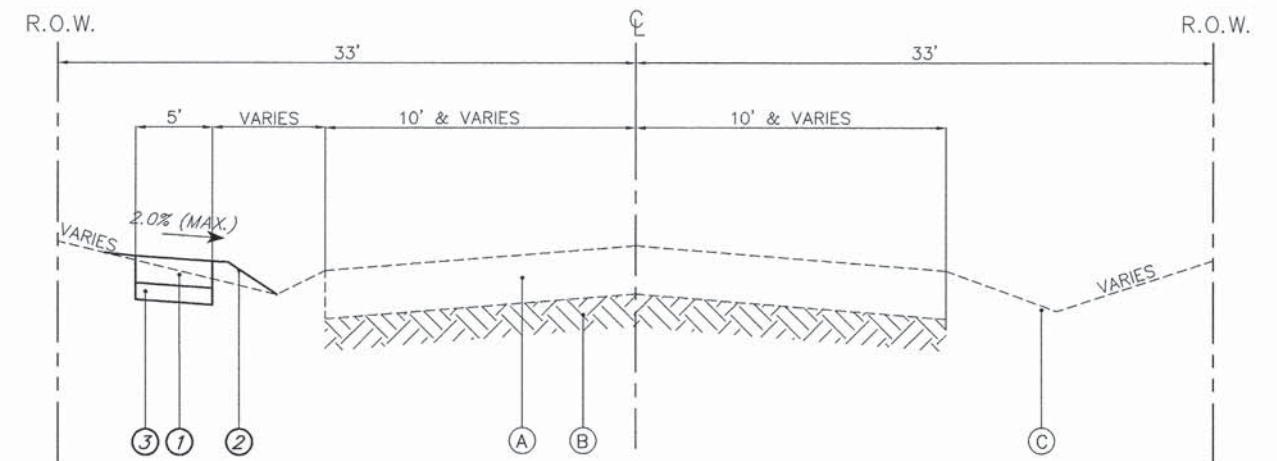
TYPICAL SECTION

SUMMIT STREET
STA. 12+48 - 13+27



TYPICAL SECTION

SUMMIT STREET
STA. 8+80 - 12+48



TYPICAL SECTION

WAVERLY ROAD
STA. 6+60 - 18+60

HOT-MIX ASPHALT MIXTURE REQUIREMENTS

MIXTURE TYPE	AIR VOIDS
PAVEMENT PATCHING	
HOT-MIX ASPHALT SURFACE COURSE, MIX 'D', N50, (IL 9.5 mm) 2"	4% @ 50 GYR
HOT-MIX ASPHALT BINDER COURSE, IL-19.0, N50, 3"	4% @ 50 GYR
INCIDENTAL HOT MIX ASPHALT SURFACING	
HOT-MIX ASPHALT SURFACE COURSE, MIX 'D', N50, (IL 9.5 mm)	4% @ 50 GYR
DRIVEWAYS	
HOT-MIX ASPHALT SURFACE COURSE, MIX 'D', N50, (IL 9.5 mm) 3"	4% @ 50 GYR

THE UNIT WEIGHT TO CALCULATE ALL HMA SURFACE MIXTURE QUANTITIES IS 112 LBS/SQ YD/IN. THE 'AC TYPE' FOR POLYMERIZED HMA MIXES SHALL BE 'SBS/SBR PG 76-22' AND FOR NON-POLYMERIZED HMA THE 'AC TYPE' SHALL BE 'PG 640-22' UNLESS MODIFIED BY DISTRICT ONE SPECIAL PROVISIONS. FOR USE OF RECYCLED MATERIAL SEE D-1 SPECIAL PROVISIONS

TYPICAL SECTION LEGEND

- (A) EXISTING HOT-MIX ASPHALT PAVEMENT
- (B) EXISTING SUBBASE
- (C) EXISTING TOPSOIL AND SOD
- (1) PORTLAND CEMENT CONCRETE SIDEWALK, 5"
- (2) RESTORATION, 4" TOPSOIL AND SOD
- (3) AGGREGATE BASE COURSE, 4"
- (4) COMBINATION CONCRETE CURB & GUTTER, B6.12
- (5) CLASS D PATCHES, 5"

FILE NAME = 4251-001-D1(DOT).dwg

USER NAME = BJW

DESIGNED - BJW

REVISED -

PLOT SCALE = 1:1

DRAWN - BJW

REVISED -

PLOT DATE = 5/9/13

CHECKED - LXM

REVISED -

DATE - 5/9/13

REVISED -

**STATE OF ILLINOIS
DEPARTMENT OF TRANSPORTATION**

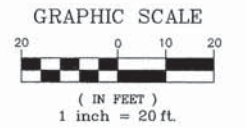
**VILLAGE OF BARRINGTON - SAFE ROUTE TO SCHOOLS
TYPICAL SECTIONS**

SCALE N.T.S.

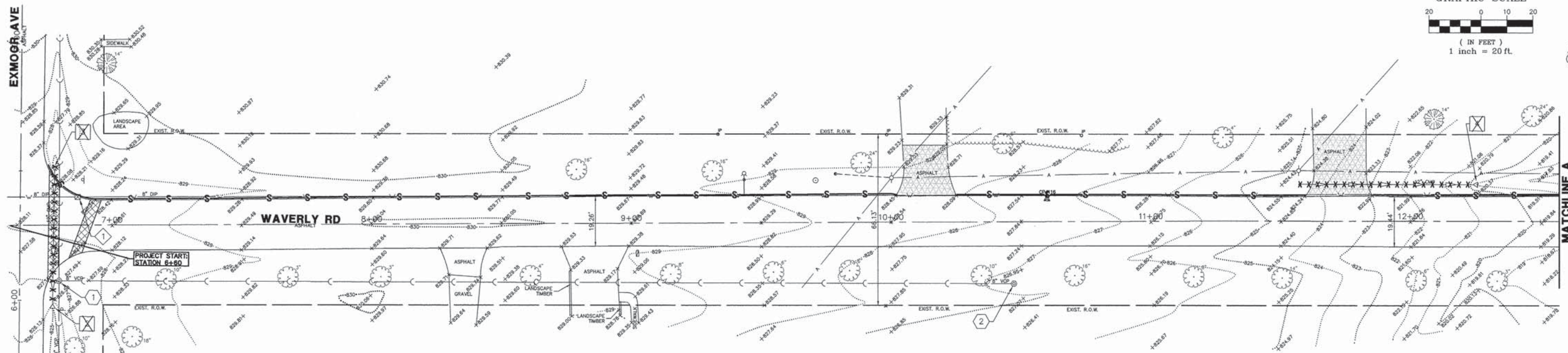
SHEET NO. 4 OF 12 SHEETS

STA. TO STA.

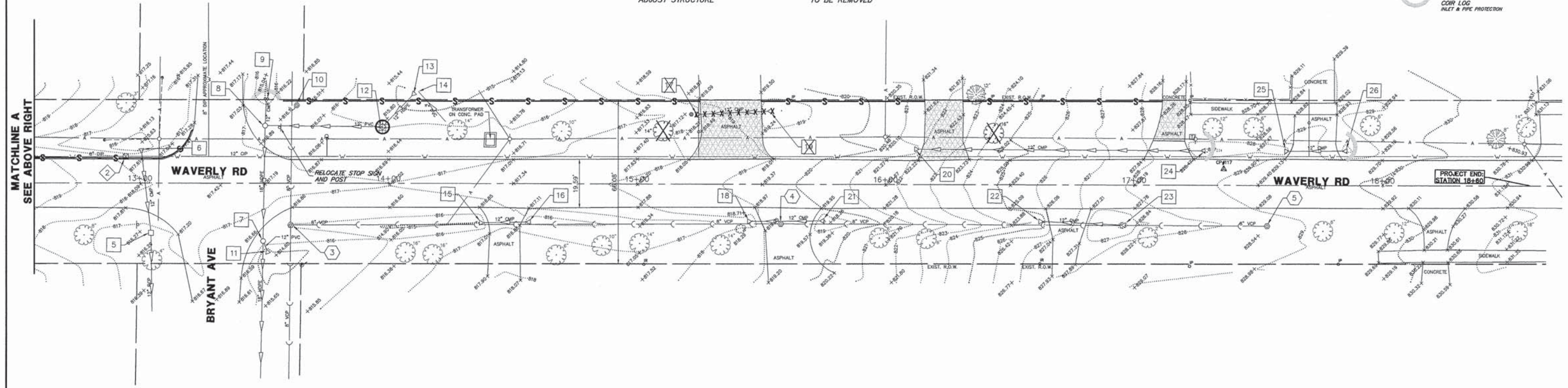
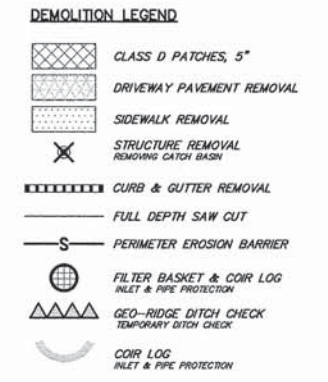
FAU RTE	SECTION	COUNTY	TOTAL SHEETS	SHEET NO.
N/A	10-00086-00-SW	LAKE/COOK	12	4
CONTRACT#			63842	
ILLINOIS FED. AID PROJECT				



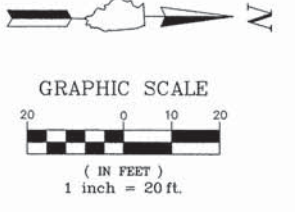
N
MATCHLINE A
SEE BELOW LEFT



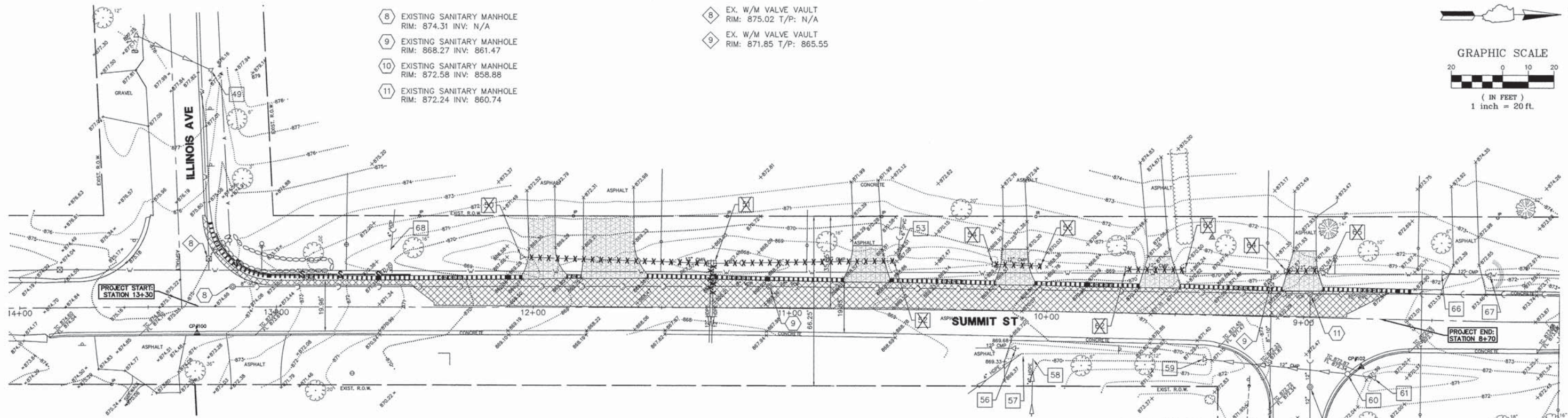
- | | | | | |
|--|--|---|---|--|
| 1 EXISTING SANITARY MANHOLE
RIM: 827.01 INV: 817.71
E 8" INV: 818.01 | 1 EX. W/M VALVE VAULT
RIM: 828.32 T/P: 822.32 | 1 EX. STORM FLARED END SECTION
INV: 822.83 | 9 EX. STORM FLARED END SECTION
INV: 814.85 | 18 EX. STORM FLARED END SECTION
INV: 817.06 |
| 2 EXISTING SANITARY MANHOLE
RIM: 826.77 INV: 819.32 | 2 EX. W/M VALVE VAULT
RIM: 817.84 T/P: 811.84 | 2 EX. STORM FLARED END SECTION
INV: 825.01
<i>TO BE REMOVED</i> | 10 EX. STORM CATCH BASIN
RIM: 816.34 INV: NO PIPES VISIBLE
TOW: 813.84 BOTTOM: 810.84 | 19 EX. STORM FLARED END SECTION
INV: 818.32
<i>TO BE REMOVED</i> |
| 3 EXISTING SANITARY MANHOLE
RIM: 815.95 INV: 807.45
E 8" INV: 807.55 | | 3 EX. STORM FLARED END SECTION
INV: 826.72
<i>TO BE REMOVED</i> | 11 EX. STORM FLARED END SECTION
INV: 814.05 | 20 EX. STORM FLARED END SECTION
INV: 820.42 |
| 4 EXISTING SANITARY MANHOLE
RIM: 819.18 INV: 810.98 | | 4 EX. STORM FLARED END SECTION
INV: 818.83
<i>TO BE REMOVED</i> | 12 EX. STORM INLET
RIM: 815.97 INV: 813.87 | 21 EX. STORM FLARED END SECTION
INV: 817.88 |
| 5 EXISTING SANITARY MANHOLE
RIM: 828.62 INV: 814.12 | | 5 EX. STORM INLET
RIM: 816.09 INV: 813.69 | 13 EX. STORM FLARED END SECTION
INV: 814.05 | 22 EX. STORM FLARED END SECTION
INV: 824.05 |
| | | 6 EX. STORM FLARED END SECTION
INV: 815.38 | 14 EX. STORM 4" PVC
INV: 814.29 | 23 EX. STORM FLARED END SECTION
INV: 825.79 |
| | | 7 EX. STORM CATCH BASIN
RIM: 816.47 INV: 813.17
SE 12" INV: 813.77 | 15 EX. STORM FLARED END SECTION
INV: 814.99 | 24 EX. STORM FLARED END SECTION
INV: 826.78 |
| | | 8 EX. STORM CATCH BASIN
RIM: 816.60 INV: 813.40
<i>ADJUST STRUCTURE</i> | 16 EX. STORM FLARED END SECTION
INV: 815.27 | 25 EX. STORM FLARED END SECTION
INV: 827.33 |
| | | | 17 EX. STORM FLARED END SECTION
INV: 817.21
<i>TO BE REMOVED</i> | 26 EX. STORM FLARED END SECTION
INV: 827.80 |



FILE NAME = 4251-001-PR3-WAVERLY EXMOOR	DESIGNED - BJW	REVISED -	STATE OF ILLINOIS DEPARTMENT OF TRANSPORTATION	VILLAGE OF BARRINGTON - SAFE ROUTE TO SCHOOLS DEMOLITION PLAN		FA. RTE.	SECTION	COUNTY	TOTAL SHEETS	SHEET NO.
PLOT SCALE = 1" = .0833'	DRAWN - BJW	REVISED -		SCALE 1"=20'	SHEET NO. 5 OF 12 SHEETS	STA. 0+00 TO STA. 10+64	10-00086-00-SW	COOK	12	5
PLOT DATE = 5/9/13	CHECKED - LXM	REVISED -		ILLINOIS FED. AID PROJECT		CONTRACT # 63842				



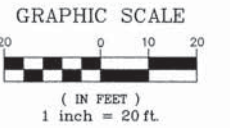
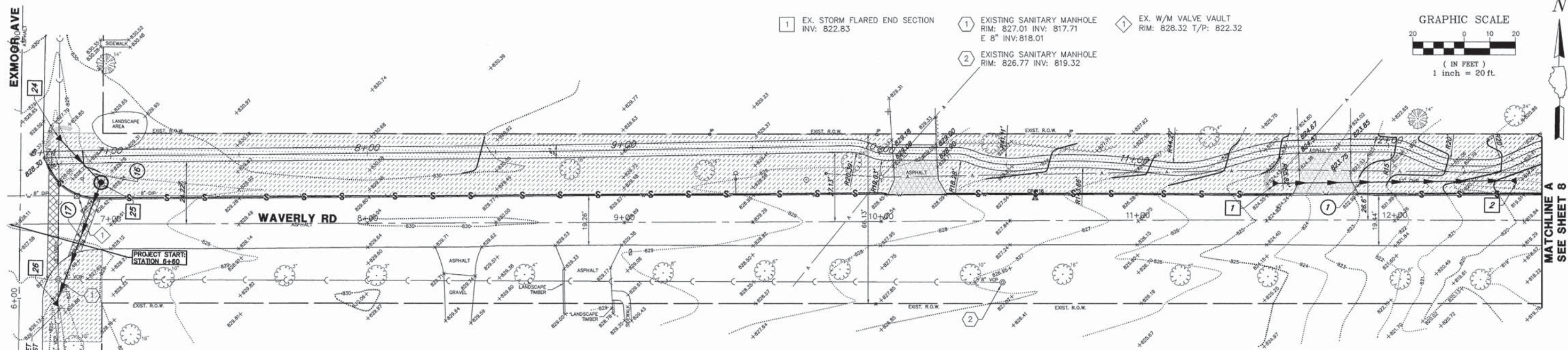
- 8 EXISTING SANITARY MANHOLE
RIM: 874.31 INV: N/A
- 9 EXISTING SANITARY MANHOLE
RIM: 868.27 INV: 861.47
- 10 EXISTING SANITARY MANHOLE
RIM: 872.58 INV: 858.88
- 11 EXISTING SANITARY MANHOLE
RIM: 872.24 INV: 860.74
- 8 EX. W/M VALVE VAULT
RIM: 875.02 T/P: N/A
- 9 EX. W/M VALVE VAULT
RIM: 871.85 T/P: 865.55



- 49 EX. STORM FLARED END SECTION
INV: 876.02
- 50 EX. STORM FLARED END SECTION
INV: 867.47
TO BE REMOVED
- 51 EX. STORM CATCH BASIN
RIM: 867.35 INV: 864.76
N 15" INV: 865.01
S 12" INV: 865.11
TO BE REMOVED
- 52 EX. STORM FLARED END SECTION
INV: 866.78
TO BE REMOVED
- 53 EX. STORM FLARED END SECTION
INV: 867.66
- 54 EX. STORM FLARED END SECTION
INV: 867.98
TO BE REMOVED
- 55 EX. STORM FLARED END SECTION
INV: 868.39
TO BE REMOVED
- 56 EX. STORM FLARED END SECTION
INV: 867.97
- 57 EX. STORM FLARED END SECTION
INV: 868.92
- 58 EX. STORM FLARED END SECTION
INV: 869.78
- 59 EX. STORM FLARED END SECTION
INV: 869.41
- 60 EX. STORM CATCH BASIN
RIM: 872.28 INV: 869.78
- 61 EX. STORM FLARED END SECTION
INV: 870.25
- 62 EX. STORM FLARED END SECTION
INV: 868.80
TO BE REMOVED
- 63 EX. STORM FLARED END SECTION
INV: 869.27
TO BE REMOVED
- 64 EX. STORM FLARED END SECTION
INV: 870.14
TO BE REMOVED
- 65 EX. STORM FLARED END SECTION
INV: 870.36
TO BE REMOVED
- 66 EX. STORM FLARED END SECTION
INV: 871.13
- 67 EX. STORM FLARED END SECTION
INV: 871.52

- DEMOLITION LEGEND**
- CLASS D PATCHES, 5"
 - DRIVEWAY PAVEMENT REMOVAL
 - SIDEWALK REMOVAL
 - STRUCTURE REMOVAL
REMOVING CATCH BASIN
 - CURB & GUTTER REMOVAL
 - FULL DEPTH SAW CUT
 - PERIMETER EROSION BARRIER
 - FILTER BASKET & COIR LOG
INLET & PIPE PROTECTION
 - GEO-RIDGE DITCH CHECK
TEMPORARY DITCH CHECK
 - COIR LOG
INLET & PIPE PROTECTION

FILE NAME = 4251-001-PR3-SUMMIT(00T).dwg	USER NAME = BRIAN WESOLOWSKI	DESIGNED - BJW	REVISED -	STATE OF ILLINOIS DEPARTMENT OF TRANSPORTATION	VILLAGE OF BARRINGTON - SAFE ROUTE TO SCHOOLS DEMOLITION PLAN	FA. RTE.	SECTION	COUNTY	TOTAL SHEETS	SHEET NO.
PLOT SCALE = 1" = .0833'	CHECKED - LXM	REVISED -	10-00086-00-SW			COOK	12	6		
PLOT DATE = 5/9/13	DATE - 5/9/13	REVISED -	CONTRACT #			63842				
			ILLINOIS FED. AID PROJECT							
					SCALE 1"=20'	SHEET NO. 6 OF 12 SHEETS	STA. 0+00 TO STA. 10+45			

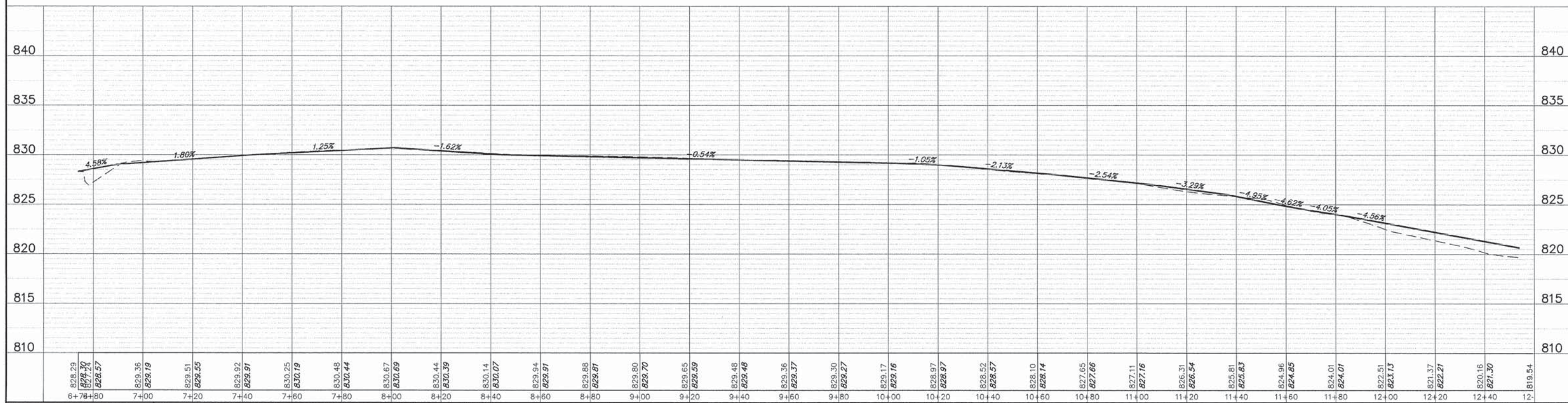


MATCHLINE A
SEE SHEET 8

- 1 EX. STORM FLARED END SECTION
INV: 822.83
- 1 EXISTING SANITARY MANHOLE
RIM: 827.01 INV: 817.71
E 8" INV: 818.01
- 1 EX. W/M VALVE VAULT
RIM: 828.32 T/P: 822.32
- 2 EXISTING SANITARY MANHOLE
RIM: 826.77 INV: 819.32

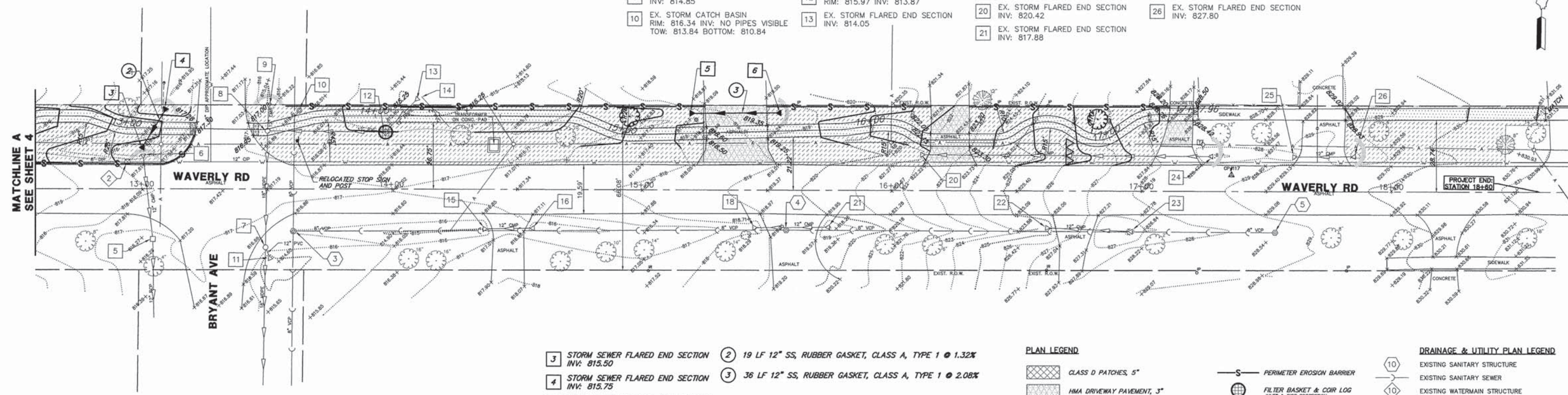
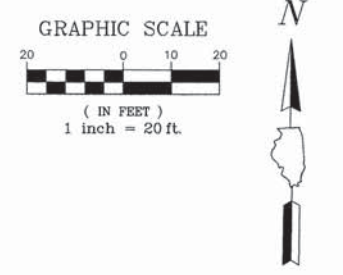
- 1 STORM SEWER FLARED END SECTION
INV: 823.00
- 2 STORM SEWER FLARED END SECTION
INV: 818.00
- 24 STORM SEWER FLARED END SECTION
INV: 826.50
- 25 STORM SEWER CATCH BASIN
TY 'A' 48" # TY B GRATE
RIM: 828.20 INV: 826.00
- 26 STORM SEWER FLARED END SECTION
INV: 825.87
- 1 95 LF 12" SS, RUBBER GASKET, CLASS A, TYPE 1 @ 5.26%
- 16 24 LF 12" SS, RUBBER GASKET, CLASS A, TYPE 1 @ 2.08%
- 17 51 LF 12" SS, RUBBER GASKET, CLASS A, TYPE 1 @ 0.25%

- PLAN LEGEND**
- CLASS D PATCHES, 5"
 - HMA DRIVEWAY PAVEMENT, 3"
 - CONCRETE SIDEWALK
 - PORTLAND CEMENT CONCRETE SIDEWALK, 5"
 - PORTLAND CEMENT CONCRETE SIDEWALK, 7"
 - LANDSCAPE RESTORATION
 - TOPSOIL, FURNISH & PLACE, 4"
 - COMB. CC&G TYPE B-6.12
 - DEPRESSED CURB & GUTTER
 - DETECTABLE WARNINGS
 - PERIMETER EROSION BARRIER
 - FILTER BASKET & COIR LOG
INLET & PIPE PROTECTION
 - FILTER BASKET
INLET & PIPE PROTECTION
 - GEO-RIDGE DITCH CHECK
TEMPORARY DITCH CHECK
 - COIR LOG
INLET & PIPE PROTECTION
- DRAINAGE & UTILITY PLAN LEGEND**
- EXISTING SANITARY STRUCTURE
 - EXISTING SANITARY SEWER
 - EXISTING WATERMAIN STRUCTURE
 - EXISTING WATERMAIN
 - EXISTING STORM SEWER STRUCTURE
 - EXISTING STORM SEWER
 - PROPOSED STORM SEWER STRUCTURE
 - PROPOSED STORM SEWER
 - PROPOSED STORM SEWER PIPE



FILE NAME = 4251-001-PR3-WAVERLY EXMOGR	DESIGNED - BJW	REVISOR -	STATE OF ILLINOIS DEPARTMENT OF TRANSPORTATION	VILLAGE OF BARRINGTON - SAFE ROUTE TO SCHOOLS PROPOSED PLAN & PROFILE	SECTION 10-00086-00-SW	COUNTY COOK	TOTAL SHEETS 12	SHEET NO. 7
PLOT SCALE = 1" = .0833'	DRAWN - BJW	REVISOR -	SCALE 1"=20'	SHEET NO. 7 OF 12 SHEETS	CONTRACT #	ILLINOIS FED. AID PROJECT		
PLOT DATE = 5/9/13	CHECKED - LXM	REVISOR -		STA. 0+00 TO STA. 5+80	63842			
	DATE - 5/9/13	REVISOR -						

- 3 EXISTING SANITARY MANHOLE
RIM: 815.95 INV: 807.45
E 8" INV: 807.55
- 4 EXISTING SANITARY MANHOLE
RIM: 819.18 INV: 810.98
- 5 EXISTING SANITARY MANHOLE
RIM: 828.62 INV: 814.12
- 6 EX. W/M VALVE VAULT
RIM: 817.84 T/P: 811.84
- 5 EX. STORM INLET
RIM: 816.09 INV: 813.69
- 6 EX. STORM FLARED END SECTION
INV: 815.38
- 7 EX. STORM CATCH BASIN
RIM: 816.47 INV: 813.17
SE 12" INV: 813.77
- 9 EX. STORM FLARED END SECTION
INV: 814.85
- 10 EX. STORM CATCH BASIN
RIM: 816.34 INV: NO PIPES VISIBLE
TOW: 813.84 BOTTOM: 810.84
- 9 EX. STORM FLARED END SECTION
INV: 814.85
- 10 EX. STORM CATCH BASIN
RIM: 816.09 INV: 813.69
- 11 EX. STORM FLARED END SECTION
INV: 814.05
- 12 EX. STORM INLET
RIM: 815.97 INV: 813.87
- 13 EX. STORM FLARED END SECTION
INV: 814.05
- 14 EX. STORM 4" PVC
INV: 814.29
- 15 EX. STORM FLARED END SECTION
INV: 814.99
- 16 EX. STORM FLARED END SECTION
INV: 815.27
- 18 EX. STORM FLARED END SECTION
INV: 817.06
- 20 EX. STORM FLARED END SECTION
INV: 820.42
- 21 EX. STORM FLARED END SECTION
INV: 817.88
- 22 EX. STORM FLARED END SECTION
INV: 824.05
- 23 EX. STORM FLARED END SECTION
INV: 825.79
- 24 EX. STORM FLARED END SECTION
INV: 826.78
- 25 EX. STORM FLARED END SECTION
INV: 827.33
- 26 EX. STORM FLARED END SECTION
INV: 827.80



- 3 STORM SEWER FLARED END SECTION
INV: 815.50
- 4 STORM SEWER FLARED END SECTION
INV: 815.75
- 5 STORM SEWER FLARED END SECTION
INV: 817.25
- 6 STORM SEWER FLARED END SECTION
INV: 818.00
- 2 19 LF 12" SS, RUBBER GASKET, CLASS A, TYPE 1 @ 1.32%
- 3 36 LF 12" SS, RUBBER GASKET, CLASS A, TYPE 1 @ 2.08%

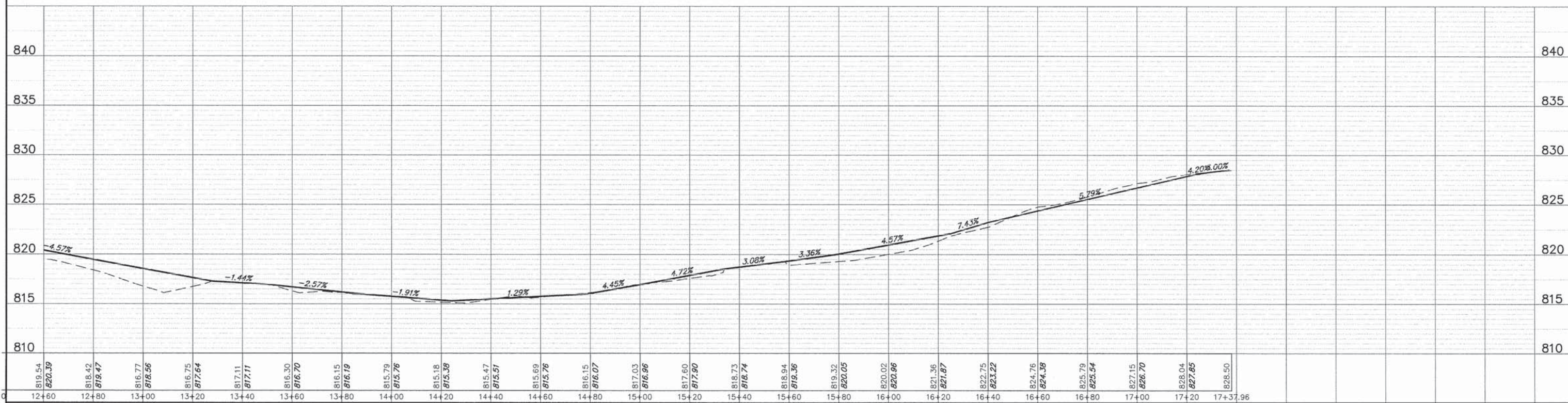
PLAN LEGEND

- CLASS D PATCHES, 5"
- HMA DRIVEWAY PAVEMENT, 3"
- CONCRETE SIDEWALK
PORTLAND CEMENT CONCRETE SIDEWALK, 5"
PORTLAND CEMENT CONCRETE SIDEWALK, 7"
- LANDSCAPE RESTORATION
TOPSOIL FURNISH & PLANT, 4"
SEEDING
- COMB. CC&G TYPE B-6.12
- DEPRESSED CURB & GUTTER
- DETECTABLE WARNINGS

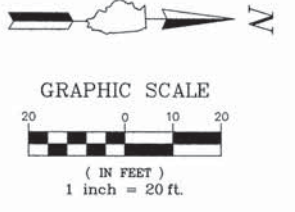
- PERIMETER EROSION BARRIER
- FILTER BASKET & COIR LOG
INLET & PIPE PROTECTION
- FILTER BASKET
INLET & PIPE PROTECTION
- GEO-RIDGE DITCH CHECK
TEMPORARY DITCH CHECK
- COIR LOG
INLET & PIPE PROTECTION

DRAINAGE & UTILITY PLAN LEGEND

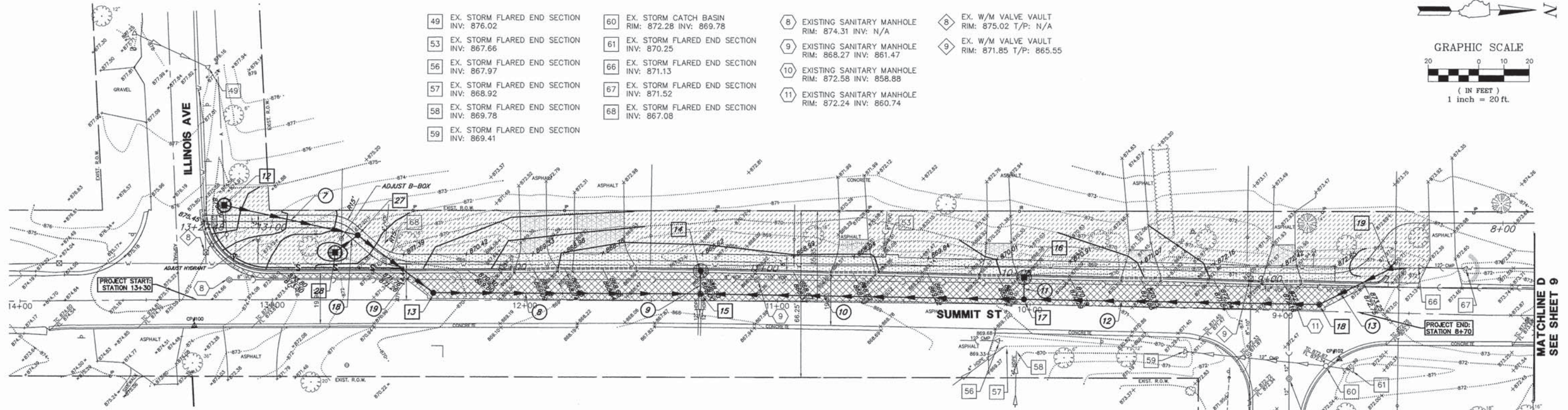
- EXISTING SANITARY STRUCTURE
- EXISTING SANITARY SEWER
- EXISTING WATERMAIN STRUCTURE
- EXISTING WATERMAIN
- EXISTING STORM SEWER STRUCTURE
- EXISTING STORM SEWER
- PROPOSED STORM SEWER STRUCTURE
- PROPOSED STORM SEWER PIPE



FILE NAME = 4251-001-PR3-WAVERLY EXHIBIT PLOT SCALE = 1" = .0833' PLOT DATE = 5/9/13	DESIGNED - BJW DRAWN - BJW CHECKED - LXM DATE - 5/9/13	REVISED - REVISED - REVISED - REVISED -	STATE OF ILLINOIS DEPARTMENT OF TRANSPORTATION	VILLAGE OF BARRINGTON - SAFE ROUTE TO SCHOOLS PROPOSED PLAN & PROFILE	SECTION 10-00086-00-SW COUNTY COOK TOTAL SHEETS 12 SHEET NO. 8 CONTRACT # 63842 ILLINOIS FED. AID PROJECT
			SCALE 1"=20'	SHEET NO. 8 OF 12 SHEETS	STA. 5+80 TO STA. 10+64



- | | | | |
|--|---|---|--|
| 49 EX. STORM FLARED END SECTION
INV: 876.02 | 60 EX. STORM CATCH BASIN
RIM: 872.28 INV: 869.78 | 8 EXISTING SANITARY MANHOLE
RIM: 874.31 INV: N/A | 8 EX. W/M VALVE VAULT
RIM: 875.02 T/P: N/A |
| 53 EX. STORM FLARED END SECTION
INV: 867.66 | 61 EX. STORM FLARED END SECTION
INV: 870.25 | 9 EXISTING SANITARY MANHOLE
RIM: 868.27 INV: 861.47 | 9 EX. W/M VALVE VAULT
RIM: 871.85 T/P: 865.55 |
| 56 EX. STORM FLARED END SECTION
INV: 867.97 | 66 EX. STORM FLARED END SECTION
INV: 871.13 | 10 EXISTING SANITARY MANHOLE
RIM: 872.58 INV: 858.88 | |
| 57 EX. STORM FLARED END SECTION
INV: 868.92 | 67 EX. STORM FLARED END SECTION
INV: 871.52 | 11 EXISTING SANITARY MANHOLE
RIM: 872.24 INV: 860.74 | |
| 58 EX. STORM FLARED END SECTION
INV: 869.78 | 68 EX. STORM FLARED END SECTION
INV: 867.08 | | |
| 59 EX. STORM FLARED END SECTION
INV: 869.41 | | | |



PLAN LEGEND

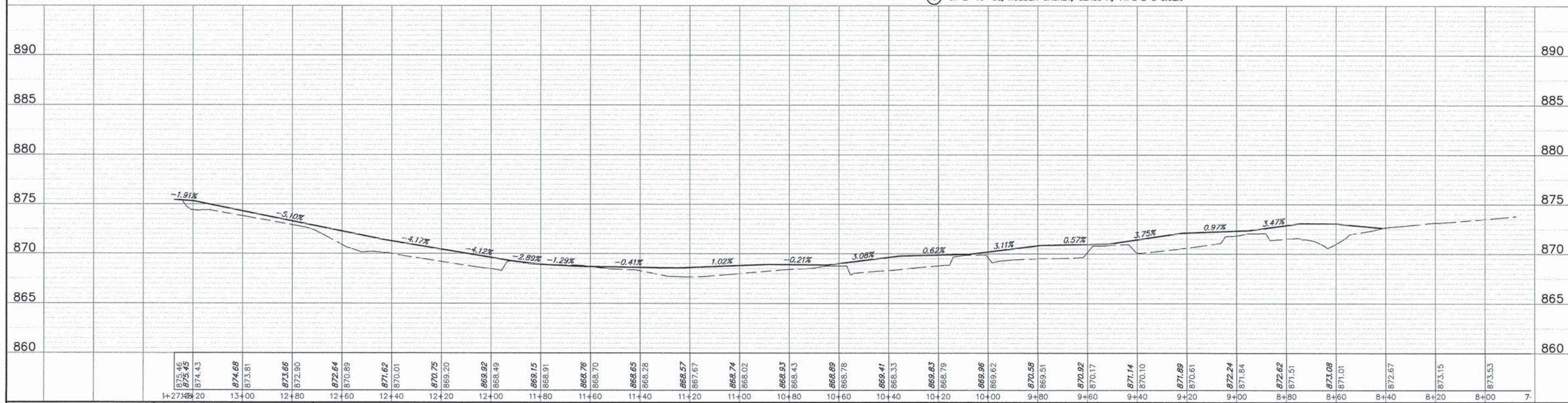
- CLASS D PATCHES, 5"
- HMA DRIVEWAY PAVEMENT, 3"
- CONCRETE SIDEWALK
PORTLAND CEMENT CONCRETE SIDEWALK, 5"
PORTLAND CEMENT CONCRETE SIDEWALK, 7"
- LANDSCAPE RESTORATION
TOPSOIL FURNISH & PLACE, 4"
SEEDING
- COMB. CO&G TYPE B-6.12
- DEPRESSED CURB & GUTTER
- DETECTABLE WARNINGS

- PERIMETER EROSION BARRIER
- FILTER BASKET & COIR LOG
INLET & PIPE PROTECTION
- FILTER BASKET
INLET & PIPE PROTECTION
- GEO-RIDGE DITCH CHECK
TEMPORARY DITCH CHECK
- COIR LOG
INLET & PIPE PROTECTION

DRAINAGE & UTILITY PLAN LEGEND

- EXISTING SANITARY STRUCTURE
- EXISTING SANITARY SEWER
- EXISTING WATERMAIN STRUCTURE
- EXISTING WATERMAIN
- EXISTING STORM SEWER STRUCTURE
- EXISTING STORM SEWER
- PROPOSED STORM SEWER STRUCTURE
- PROPOSED STORM SEWER
- PROPOSED STORM SEWER PIPE

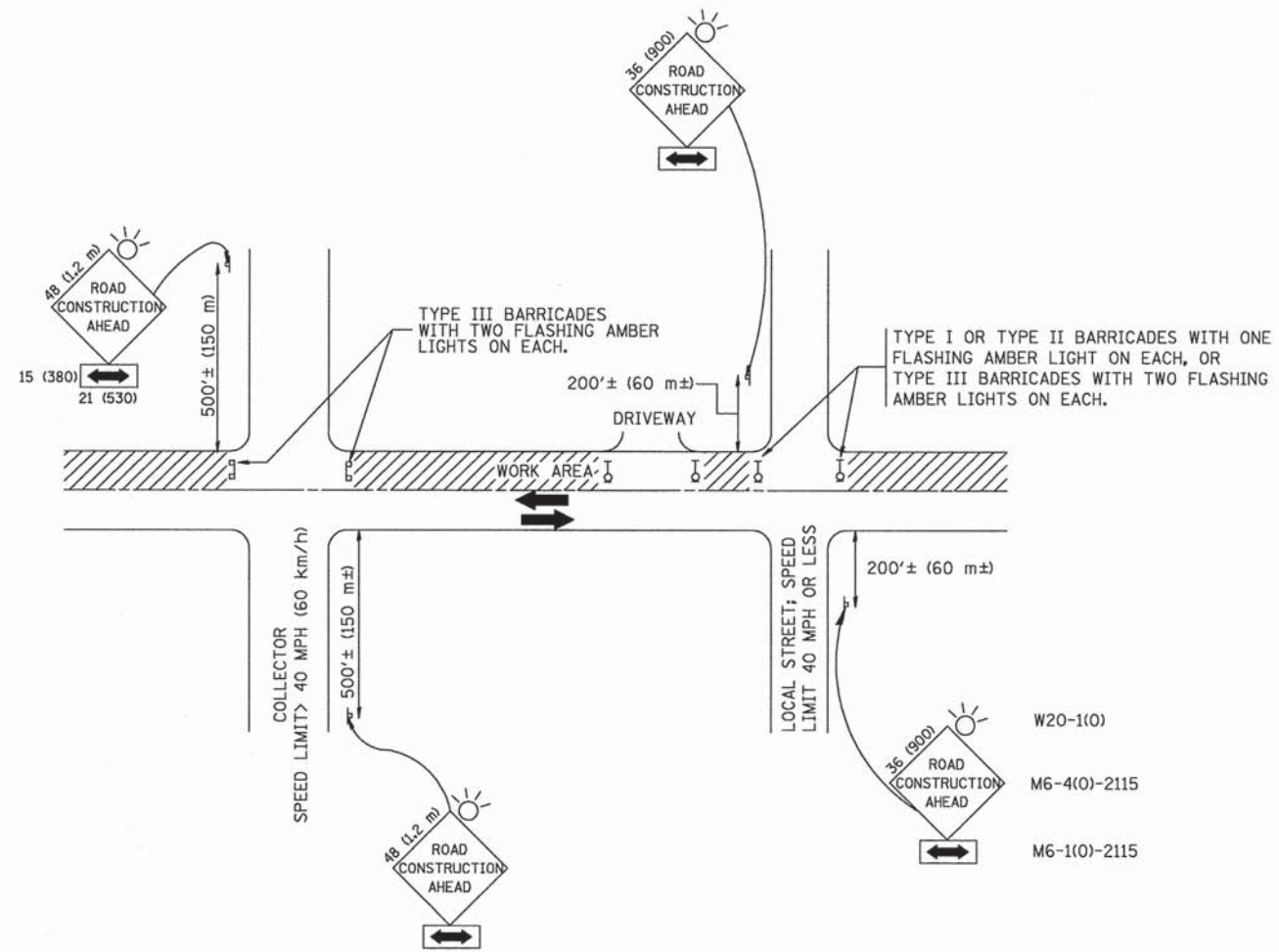
- | | | |
|---|---|--|
| 12 STORM SEWER INLET
TY 'A' 24" TY B GRATE
RIM: 874.75 INV: 870.97 | 17 STORM SEWER CATCH BASIN
TY 'A' 48" TY 1 FR & GR C.L.
RIM: 870.16 INV: 865.34 | 7 53 LF 15" SS, RUBBER GASKET, CLASS A, TYPE 2 @ 6.66% |
| 13 STORM SEWER CATCH BASIN
TY 'A' 48" TY 1 FR & GR C.L.
RIM: 870.46 INV: 865.25 | 18 STORM SEWER MANHOLE
TY 'A' 48" TY 1 FR & GR C.L.
RIM: 872.59 INV: 865.93 | 8 105 LF 15" SS, RUBBER GASKET, CLASS A, TYPE 2 @ 0.50% |
| 14 STORM SEWER CATCH BASIN
TY 'C' 24" TY 1 FR & GR O.L.
RIM: 868.00 INV: 864.90 | 19 STORM SEWER FLARED END SECTION
INV: 871.00 | 9 10 LF 12" SS, RUBBER GASKET, CLASS A, TYPE 1 @ 2.00% |
| 15 STORM SEWER MANHOLE
TY 'A' 60" TY 1 FR & GR C.L.
RIM: 868.20 INV: 864.70 | 27 STORM SEWER CATCH BASIN
TY 'A' 48" TY 1 FR & GR C.L.
RIM: 872.50 INV: 867.44 | 10 128 LF 15" SS, RUBBER GASKET, CLASS A, TYPE 2 @ 0.50% |
| 16 STORM SEWER INLET
TY 'A' 24" TY 1 FR & GR O.L.
RIM: 870.00 INV: 866.00 | 28 STORM SEWER INLET
TY 'A' 24" TY B GRATE
RIM: 871.75 INV: 869.00 | 11 10 LF 12" SS, RUBBER GASKET, CLASS A, TYPE 1 @ 6.6% |
| | | 12 117 LF 12" SS, RUBBER GASKET, CLASS A, TYPE 2 @ 0.50% |
| | | 13 32 LF 12" SS, RUBBER GASKET, CLASS A, TYPE 2 @ 2.00% |
| | | 18 11 LF 12" SS, RUBBER GASKET, CLASS A, TYPE 1 @ 14.18% |
| | | 19 37 LF 15" SS, RUBBER GASKET, CLASS A, TYPE 2 @ 5.92% |



FILE NAME = 4251-001-PR3-SUMMIT(001).dgn	USER NAME = BRIAN WESOLOWSKI	DESIGNED - BJW	REVISED -	STATE OF ILLINOIS DEPARTMENT OF TRANSPORTATION	VILLAGE OF BARRINGTON - SAFE ROUTE TO SCHOOLS PROPOSED PLAN & PROFILE	FA RTE	SECTION	COUNTY	TOTAL SHEETS	SHEET NO.
PLOT SCALE = 1" = .0833'	CHECKED - LXM	REVISED -	10-00086-00-SW			COOK	12	9		
PLOT DATE = 5/9/13	DATE - 5/9/13	REVISED -	CONTRACT #: 63842							

SCALE 1"=20' SHEET NO. 9 OF 12 SHEETS STA. 0+00 TO STA. 5+40

ILLINOIS FED. AID PROJECT



NOTES:

- A. FOR NO LANE RESTRICTION ON THE SIDE ROAD OR DRIVEWAYS
- SIDE ROAD WITH A SPEED LIMIT OF 40 MPH (60 km/h) OR LESS AS SHOWN ON THE DRAWING AND AS DIRECTED BY THE ENGINEER:
 - ONE **ROAD CONSTRUCTION AHEAD** SIGN 36 x 36 (900x900) WITH A FLASHER AND FLAG MOUNTED ON IT APPROXIMATELY 200' (60 m) IN ADVANCE OF THE MAIN ROUTE.
 - THE CLOSED PORTION OF THE MAIN ROUTE SHALL BE PROTECTED BY BLOCKING WITH TYPE I, TYPE II OR TYPE III BARRICADES, 1/3 OF THE CROSS SECTION OF THE CLOSED PORTION.
 - SIDE ROAD WITH A SPEED LIMIT GREATER THAN 40 MPH (60 km/h) AS SHOWN ON THE DRAWING AND AS DIRECTED BY THE ENGINEER:
 - ONE **ROAD CONSTRUCTION AHEAD** SIGN 48 x 48 (1.2 m x 1.2 m) WITH A FLASHER MOUNTED ON IT APPROXIMATELY 500' (150 m) IN ADVANCE OF THE MAIN ROUTE.
 - THE CLOSED PORTION OF THE MAIN ROUTE SHALL BE PROTECTED BY BLOCKING WITH TYPE III BARRICADES, 1/2 OF THE CROSS SECTION OF THE CLOSED PORTION.
 - WHEN THE SIDE ROAD LIES BETWEEN THE BEGINNING OF THE MAINLINE SIGNING AND THE WORK ZONE, A SINGLE HEADED ARROW (M6-1) SHALL BE USED IN LIEU OF THE DOUBLE HEADED ARROW (M6-4).
- B. FOR A LANE CLOSURE ON A SIDE ROAD OR DRIVEWAY:
- USE APPLICABLE PORTIONS OF THE TYPICAL APPLICATION OF TRAFFIC CONTROL DEVICES (STD. 701501, STD. 701606 OR THE APPROPRIATE STANDARD). THE SPACING OF SIGNS AND BARRICADES SHALL BE ADJUSTED FOR FIELD CONDITIONS AS DIRECTED BY THE ENGINEER. THE DIRECTIONAL ARROW SHALL BE COVERED OR REMOVED WHEN NO LONGER CONSISTENT WITH THE SIDE ROAD LANE CLOSURE.
- C. ADVANCE WARNING SIGNS ARE TO BE OMITTED ON DRIVEWAY UNLESS OTHERWISE NOTED.
- D. THE TRAFFIC CONTROL AND PROTECTION FOR SIDE ROADS, INTERSECTIONS, AND DRIVEWAYS SHALL BE INCIDENTAL TO THE COST OF SPECIFIED TRAFFIC CONTROL STANDARDS OR ITEMS.

All dimensions are in millimeters (Inches) unless otherwise shown. GHA #9232.388

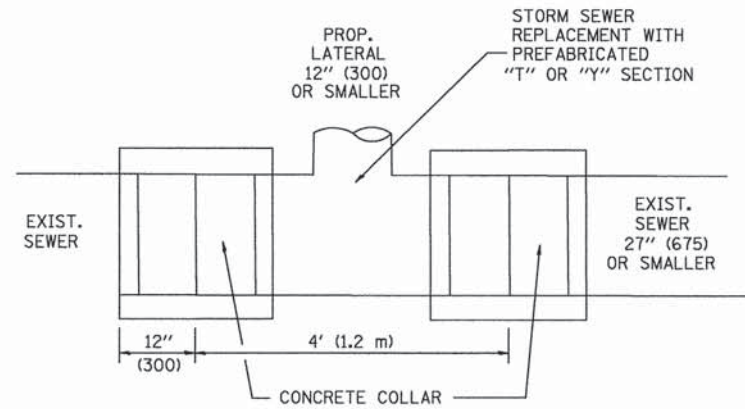
FILE NAME =	USER NAME = BJW	DESIGNED - LHA	REVISED - J. OBERLE 10-18-95
4251-001-D1(DOT).dwg		DRAWN -	REVISED - A. HOUSEH 03-06-96
	PLOT SCALE =	CHECKED -	REVISED - A. HOUSEH 10-15-96
	PLOT DATE = 5/9/13	DATE - 06-89	REVISED - T. RAMMACHER 01-06-00

**STATE OF ILLINOIS
DEPARTMENT OF TRANSPORTATION**

**VILLAGE OF BARRINGTON - SAFE ROUTE TO SCHOOLS
SIDE ROADS, INTERSECTIONS, AND DRIVEWAYS**

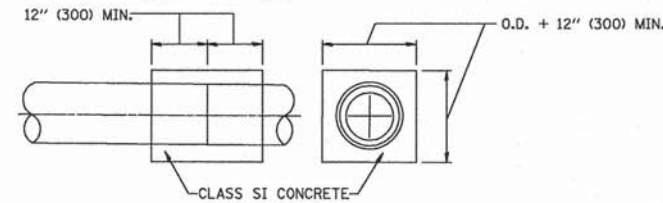
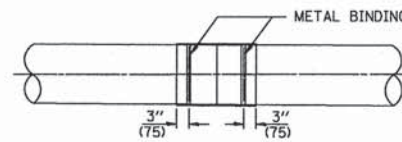
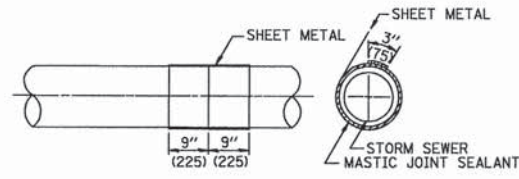
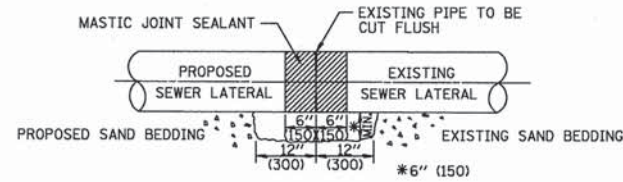
SCALE NONE SHEET NO. 10 OF 12 SHEETS STA. TO STA.

F.A.U. RTE.	SECTION	COUNTY	TOTAL SHEETS	SHEET NO.
N/A	10-00086-00-SW	LAKE/COOK	12	10
TC-10			CONTRACT # 63842	
FED. ROAD DIST. NO. 1 ILLINOIS FED. AID PROJECT				



DETAIL "A"

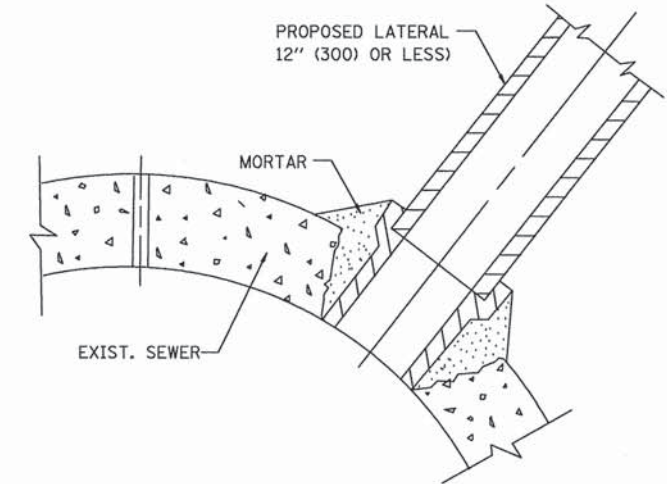
LATERAL CONNECTION TO EXISTING SEWER OF 27" (675) OR SMALLER



DETAIL "B"
CLASS SI CONCRETE COLLAR

CONSTRUCTION SEQUENCE

1. CUT THE EXISTING END OF THE PIPE SO AS TO PRESENT A FLUSH BUTT JOINT. BRUSH AND CLEAN ALL PIPES.
2. APPLY THE MASTIC JOINT SEALANT TO THE FIRST 6" (150) OF EACH PIPE.
3. BUTT THE PIPES TOGETHER LEAVING A MINIMUM OF 12' x 6' (300 x 150) DEEP EXCAVATION UNDER AND AROUND EACH PIPE END.
4. CUT A PIECE OF SHEET METAL GAGE NO. 19 1.1 (0.0418) 18" (450) WIDE BY THE OUTSIDE CIRCUMFERENCE OF THE PIPE PLUS 3" (75) LONG.
5. WRAP THE SHEET METAL AROUND THE PIPES, 9" (225) ON EACH SIDE OF THE JOINT, STARTING AT THE TOP OF THE PIPE.
6. LAP THE SHEET METAL AT LEAST 3" (75) AT THE TOP OF THE PIPE AND PLACE THE MASTIC JOINT SEALANT BETWEEN THE LAP.
7. PLACE TWO METAL BANDS AROUND THE SHEET METAL AND TIGHTEN.
8. WIPE OFF ANY EXCESS MASTIC JOINT SEALANT THAT OZZES OUT FROM BETWEEN THE SHEET METAL AND THE PIPES.
9. PLACE CLASS SI CONCRETE AROUND THE JOINT.



DETAIL "C"

PROPOSED LATERAL CONNECTION TO EXISTING SEWER OF 30" (750) OR LARGER

NOTES

MATERIAL

MATERIAL USED FOR THE TEE OR WYE SECTION SHALL BE COMPATIBLE WITH THE EXISTING STORM SEWER OR THE PROPOSED STORM SEWER.

CONSTRUCTION METHODS

- I. THIS WORK SHALL BE CONSTRUCTED IN CONFORMANCE WITH THE APPLICABLE PORTIONS OF SECTION 550 OF THE STANDARD SPECIFICATIONS.
- II. CONNECTION TO AN EXISTING STORM SEWER SHALL BE BY EITHER OF THE FOLLOWING METHODS:
 - A) PROPOSED STORM SEWER CONNECTION TO EXISTING SEWER OF 27" (675) OR SMALLER SEE DETAIL "A" AND "B".
 - B) PROPOSED STORM SEWER CONNECTION TO EXISTING SEWER OF 30" (750) OR LARGER SEE DETAIL "C".

IF THE EXISTING SEWER PIPE IS CRACKED, BROKEN OR OTHERWISE DAMAGED BY THE CONTRACTOR IN MAKING THE CIRCULAR OPENING, THE CONTRACTOR SHALL REPLACE THAT SECTION OF PIPE WITH PIPE EQUAL AND SIMILAR IN ALL RESPECTS TO THE PIPE IN THE EXISTING SEWER, IN A CAREFUL WORKMANLIKE MANNER, WITHOUT EXTRA COMPENSATION.

GENERAL

CARE MUST BE TAKEN TO PREVENT DEBRIS FROM ENTERING THE SEWER. ALL DEBRIS WHICH ENTERS THE SEWER MUST BE REMOVED. THE SEWER MUST BE LEFT CLEAN AND UNOBSTRUCTED UPON COMPLETION OF THE CONTRACT.

CARE MUST BE TAKEN TO PREVENT ANY PART OF THE NEW PIPE CONNECTION FROM PROJECTING INTO THE EXISTING SEWER.

BASIS OF PAYMENT

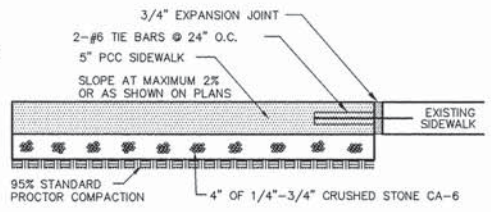
TEE OR WYE CONNECTIONS SHALL BE PAID FOR AT THE CONTRACT UNIT PRICE EACH FOR STORM SEWER TEE OR WYE OF THE TYPE AND SIZE SPECIFIED IN THE PLANS. THIS PRICE SHALL INCLUDE ALL EXCAVATION OF THE TRENCH, REMOVAL OF THE EXISTING STORM SEWER, FURNISHING AND INSTALLING THE SPECIFIED TEE OR WYE SECTION, FURNISHING AND INSTALLING THE REQUIRED CONCRETE COLLAR, AND ALL OTHER MATERIAL NECESSARY TO COMPLETE THIS WORK AS SHOWN AND SPECIFIED.

REMOVAL AND REINSTALLATION OF EXISTING STORM SEWER ADJACENT TO THE PROPOSED TEE OR WYE SECTION, FOR THE PURPOSE OF FACILITATING THE INSTALLATION OF THE TEE OR WYE SECTION, WILL NOT BE PAID FOR SEPARATELY BUT SHALL BE INCLUDED IN THE UNIT PRICE BID FOR THE WORK.

TRENCH BACKFILL, EXCAVATION IN ROCK AND REMOVAL AND REPLACEMENT OF UNSUITABLE MATERIAL BELOW PLAN BEDDING GRADE WILL BE PAID FOR SEPARATELY.

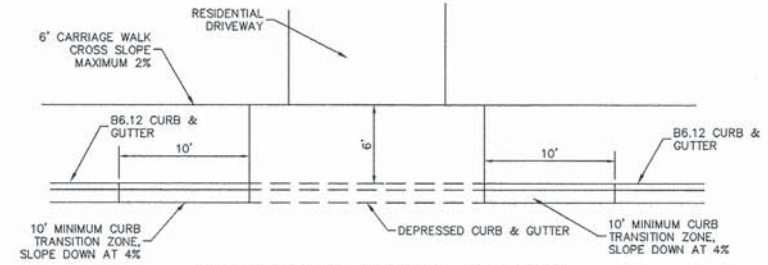
CONCRETE COLLAR FOR CONNECTING A PROPOSED STORM SEWER TO AN EXISTING STORM SEWER WILL NOT BE PAID FOR SEPARATELY BUT SHALL BE INCLUDED IN THE COST OF THE PROPOSED STORM SEWER.

FILE NAME = 4251-001-DT(DOT).dwg	USER NAME = BJW	DESIGNED - M. DE YONG	REVISED - M. DE YONG 05-08-92	STATE OF ILLINOIS DEPARTMENT OF TRANSPORTATION	VILLAGE OF BARRINGTON - SAFE ROUTE TO SCHOOLS CONNECTION TO EXISTING SEWER	FAU. RTE. SECTION	COUNTY	TOTAL SHEETS	SHEET NO.	
	PLOT SCALE =	DRAWN -	REVISED - R. SHAH 09-09-94			N/A	10-00086-00-SW	LAKE/COOK	12	11
	PLOT DATE = 5/9/13	CHECKED -	REVISED - R. SHAH 10-25-94			BD500-01 (BD-7)				
		DATE - 07-25-90	REVISED - R. SHAH 06-12-96			SCALE NONE	SHEET NO. 11 OF 12 SHEETS	STA.	TO STA.	CONTRACT # 63842
						FED. ROAD DIST. NO. 1 ILLINOIS FED. AID PROJECT				



- NOTE:
1. SET 3/4" EXPANSION JOINTS AT POINTS ABUTTING CURB OR PAVEMENT AND AT 45' MAX. INTERVALS.
 2. CONTROL JOINTS SHALL BE 1/8" TO 1/4" WIDE AND 1/4 OF THE SIDEWALK THICKNESS DEEP. THE EDGE OF THE CONTROL JOINTS SHALL BE GIVEN A 1/4" RADIUS.
 3. SIDEWALK WIDTH AS SHOWN ON PLANS.
 4. SIDEWALK SHALL FOLLOW ALL ADA STANDARDS.
 5. SIDEWALK THROUGH DRIVEWAYS SHALL BE 7" PCC WITH 6" AGGREGATE BASE COURSE.

PCC SIDEWALK DETAIL



CARRIAGE WALK DETAIL

FILE NAME = 4251-001-01(DOT).dwg

USER NAME = BJW
 PLOT SCALE = 1:1
 PLOT DATE = 5/9/13

DESIGNED - BJW
 DRAWN - BJW
 CHECKED - LXM
 DATE - 5/9/13

REVISED -
 REVISED -
 REVISED -
 REVISED -

**STATE OF ILLINOIS
 DEPARTMENT OF TRANSPORTATION**

**VILLAGE OF BARRINGTON - SAFE ROUTE TO SCHOOLS
 DETAILS**

SCALE: N.T.S. SHEET NO. 12 OF 12 SHEETS STA. TO STA.

FAU RTE	SECTION	COUNTY	TOTAL SHEETS	SHEET NO.
N/A	10-00086-00-SW	LAKE/COOK	12	12
CONTRACT #			63842	
ILLINOIS FED. AID PROJECT				