

STATE OF ILLINOIS
DEPARTMENT OF TRANSPORTATION
DIVISION OF HIGHWAYS

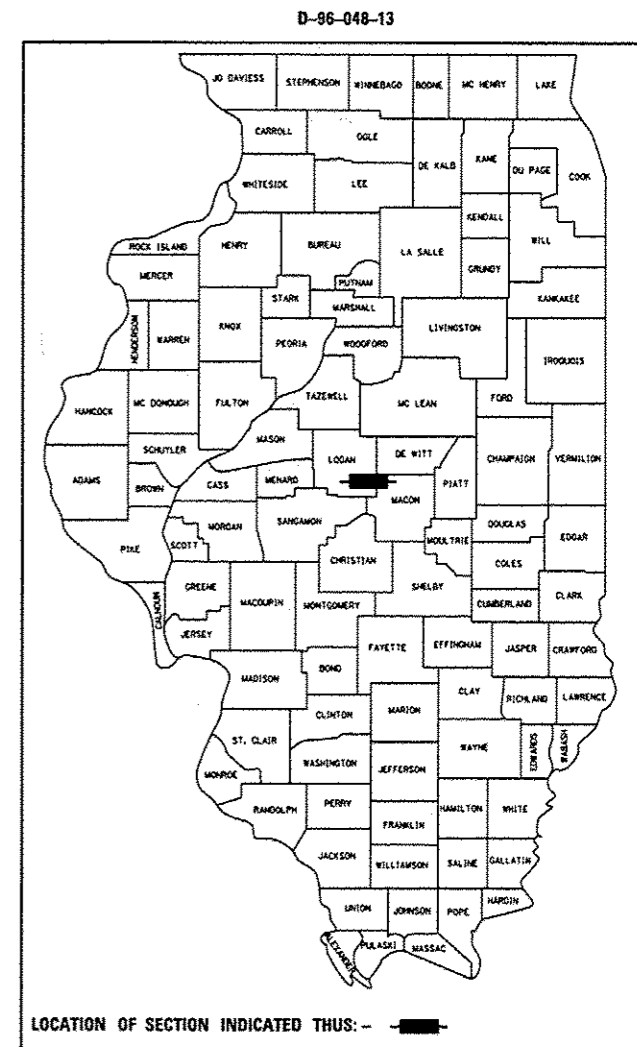
**PROPOSED
CONTRACT MAINTENANCE**

FAP ROUTE 320 (IL 121)
SECTION (134) I-2
PROJECT PATCHING AND RESURFACING
TYPE of IMPROVEMENT
LOGAN COUNTY

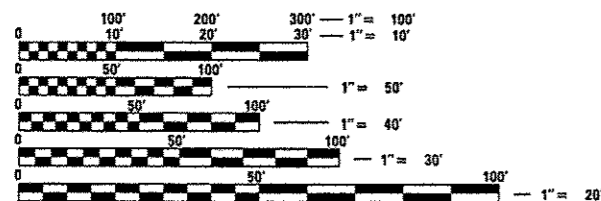
C-96-048-13

F.A.P. RTE.	SECTION	COUNTY	TOTAL SHEETS	SHEET NO.
320	(134) I-2	LOGAN	8	1
		ILLINOIS	CONTRACT NO. 72G13	

FOR INDEX OF SHEETS, SEE SHEET NO. 2



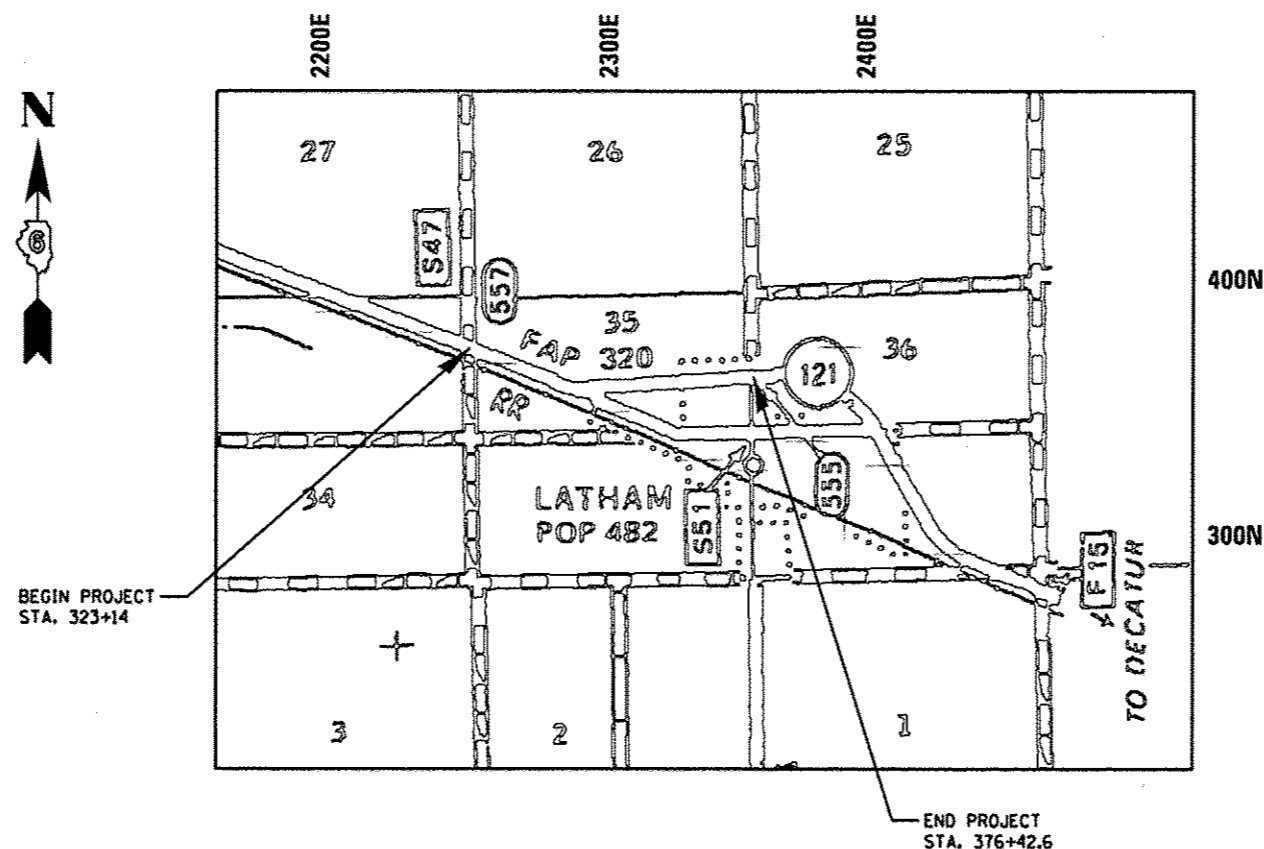
ADT: 2800 (2011)
SU: 15.18 (%)
MU: 8.93 (%)



FULL SIZE PLANS HAVE BEEN PREPARED USING STANDARD ENGINEERING SCALES. REDUCED SIZED PLANS WILL NOT CONFORM TO STANDARD SCALES. IN MAKING MEASUREMENTS ON REDUCED PLANS, THE ABOVE SCALES MAY BE USED.

J.U.L.I.E.
JOINT UTILITY LOCATION INFORMATION FOR EXCAVATION
1-800-892-0123
OR 811

PLAN AND CONTRACT TECHNICIAN
TIMOTHY SHARP (217) 782-7743
DAVE SHAH
CONTRACT NO. 72G13



STATE OF ILLINOIS
DEPARTMENT OF TRANSPORTATION
DIVISION OF HIGHWAYS

SUBMITTED April 3, 2013
Roger L. Priskell
DEPUTY DIRECTOR OF HIGHWAYS, REGION ENGINEER

May 10, 2013
John D. Baranzelli, PE
ENGINEER OF DESIGN AND ENVIRONMENT

May 10, 2013
Omer Osman, PE
DIRECTOR OF HIGHWAYS, CHIEF ENGINEER

**PRINTED BY THE AUTHORITY
OF THE STATE OF ILLINOIS**