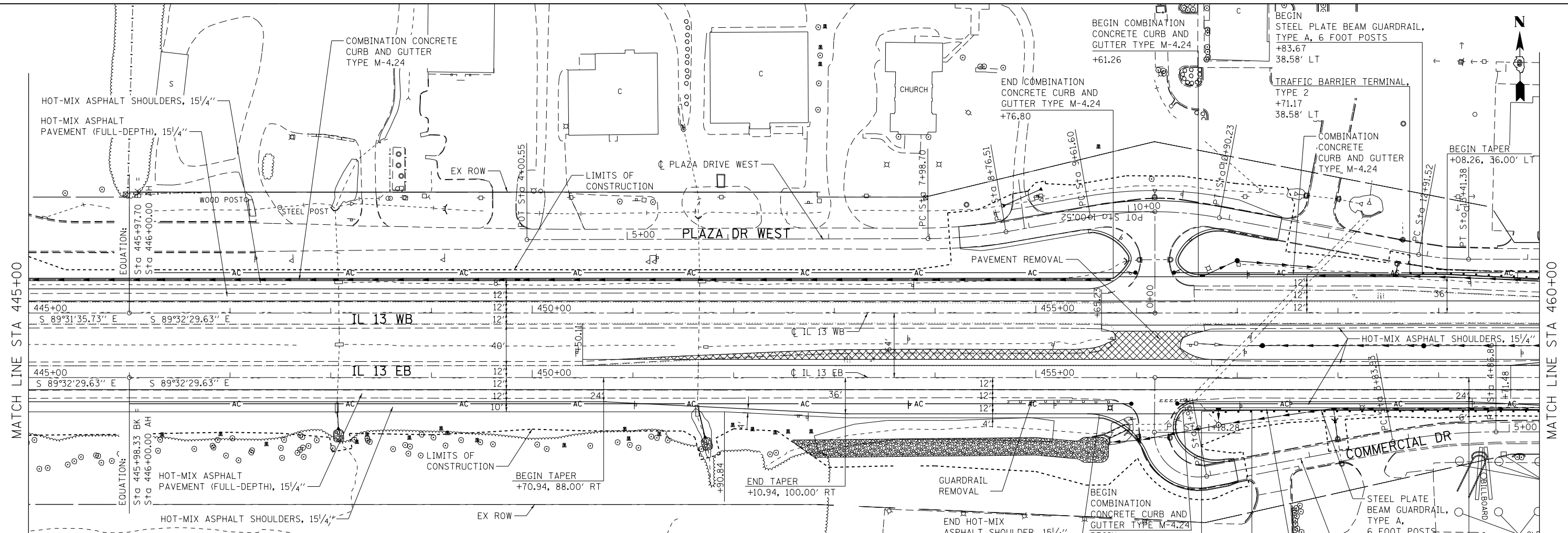


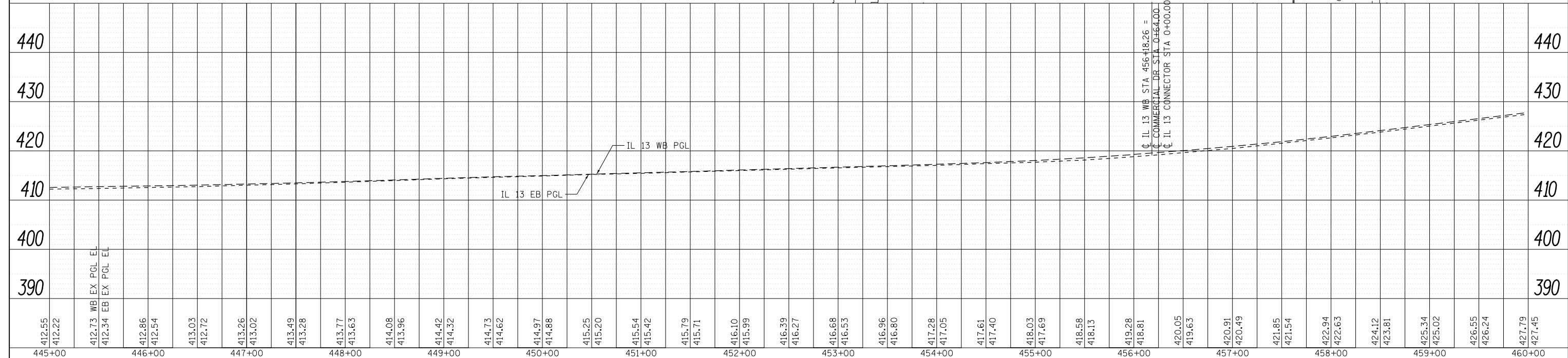
|      |          |
|------|----------|
| DATE |          |
| BY   |          |
| PLAN | SURVEYED |
|      | NOTED    |
|      | CHECKED  |
|      | ALIGNED  |
|      | DESIGNED |
|      | FILED    |
|      | NO.      |
|      |          |
|      |          |

|         |           |
|---------|-----------|
| DATE    |           |
| BY      |           |
| PROFILE | SURVEYED  |
|         | NOTED     |
|         | CHECKED   |
|         | GRADES    |
|         | STRUCTURE |
|         | NOTATIONS |
|         | CHKD      |
|         | NO.       |
|         |           |
|         |           |



- NOTES:
- EASTBOUND LANE CALLOUTS USE WESTBOUND LANE ALIGNMENT FOR STATION/OFFSET.
  - FOR ADDITIONAL REMOVAL ITEMS, SEE DRAINAGE AND UTILITY DRAWINGS, PAVEMENT MARKING AND SIGNING DRAWINGS AND SCHEDULE DRAWINGS.

| BENCHMARK |           |   |
|-----------|-----------|---|
| BENCHMARK | ELEVATION | DESCRIPTION   |
| BM10      | 440.60    | CUT SQUARE ON THE SE CORNER OF THE FOUNDATION OF AN ABOVE GROUND SIGNAL CONTROL BOX IN THE NW QUADRANT OF RTE 13 WBL AND DIVISION ST, AT CARTERVILLE 69.05' LEFT OF THE CL OF RTE 13 WBL @ STA. 465+73.58 |



FILE NAME = D:\978258-sht-plnprf-02.dgn  
**CH2MHILL**

|                              |               |           |
|------------------------------|---------------|-----------|
| USER NAME = mfox             | DESIGNED - KN | REVISED - |
|                              | DRAWN - AS    | REVISED - |
| PLOT SCALE = 100.0000' / in. | CHECKED -     | REVISED - |
| PLOT DATE = 1/31/2013        | DATE -        | REVISED - |

**STATE OF ILLINOIS**  
**DEPARTMENT OF TRANSPORTATION**

| ROADWAY PLAN AND PROFILE |                          |                |                   |
|--------------------------|--------------------------|----------------|-------------------|
| IL 13                    |                          |                |                   |
| SCALE:                   | SHEET NO. 2 OF 32 SHEETS | STA. 445+00.00 | TO STA. 460+00.00 |

| F.A.P. RTE.               | SECTION             | COUNTY     | TOTAL SHEETS       | SHEET NO. |
|---------------------------|---------------------|------------|--------------------|-----------|
| 331                       | (1-41R-2, N-4, TS-4 | WILLIAMSON | 381                | 98        |
| DRAWING NO. PL-02         |                     |            | CONTRACT NO. 78258 |           |
| ILLINOIS FED. AID PROJECT |                     |            |                    |           |