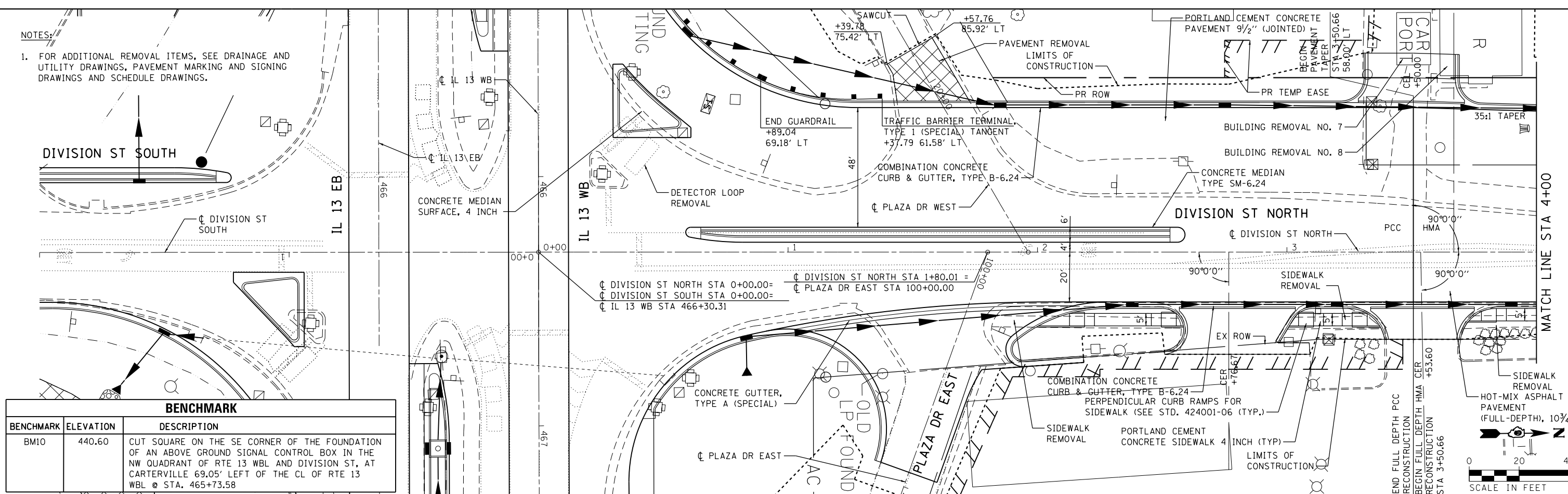


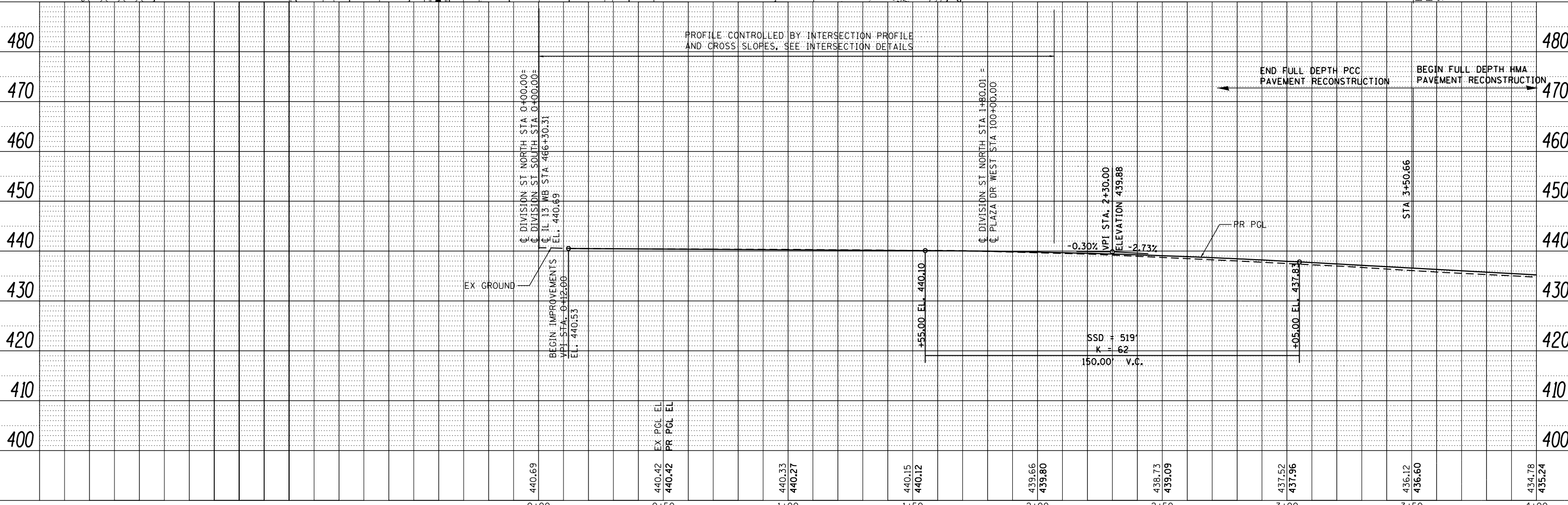
NOTES:  
 1. FOR ADDITIONAL REMOVAL ITEMS, SEE DRAINAGE AND UTILITY DRAWINGS, PAVEMENT MARKING AND SIGNING DRAWINGS AND SCHEDULE DRAWINGS.

PLAN	SURVEYED	DATE
	PLOTTED	
	ALIGNED	
	CHECKED	
	BY	
	NO.	

PROFILE	SURVEYED	DATE
	PLOTTED	
	GRADES	
	CHECKED	
	BY	
	NO.	



BENCHMARK		
BENCHMARK	ELEVATION	DESCRIPTION
BM10	440.60	CUT SQUARE ON THE SE CORNER OF THE FOUNDATION OF AN ABOVE GROUND SIGNAL CONTROL BOX IN THE NW QUADRANT OF RTE 13 WBL AND DIVISION ST, AT CARTERVILLE 69.05' LEFT OF THE CL OF RTE 13 WBL @ STA. 465+73.58



FILE NAME =	USER NAME = lovenderba	DESIGNED - KN	REVISED -	<b>STATE OF ILLINOIS</b> <b>DEPARTMENT OF TRANSPORTATION</b>	<b>ROADWAY PLAN AND PROFILE</b> <b>DIVISION STREET NORTH</b>		F.A.P. RTE.	SECTION	COUNTY	TOTAL SHEETS	SHEET NO.
c:\pwork\pwork\lovenderba\0335666\0978258-shr-plnprf-13.dgn		DRAWN - AS	REVISED -		331	(1-41R-2, N-4, TS-4)	WILLIAMSON	381	109		
PLOT SCALE = 40.0000' / in.		CHECKED -	REVISED -		DRAWING NO. PL-13		CONTRACT NO. 78258				
PLOT DATE = 3/22/2013		DATE -	REVISED -		SCALE: SHEET NO. 13 OF 32 SHEETS		STA. 0+00.00 TO STA. 4+00.00		ILLINOIS FED. AID PROJECT		