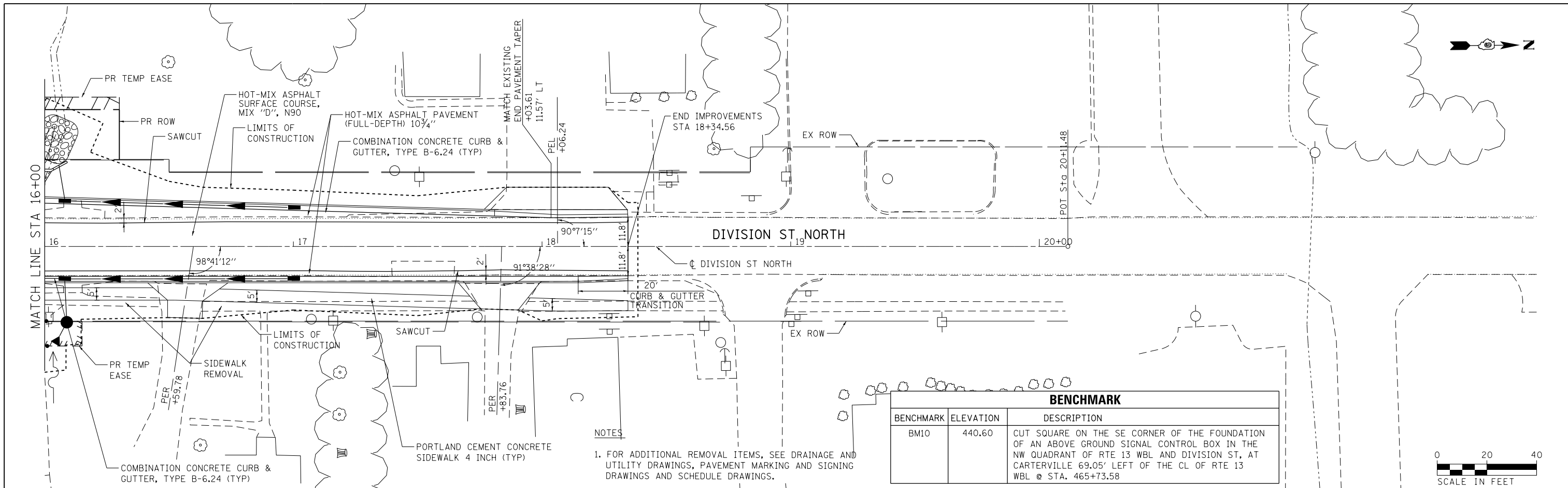


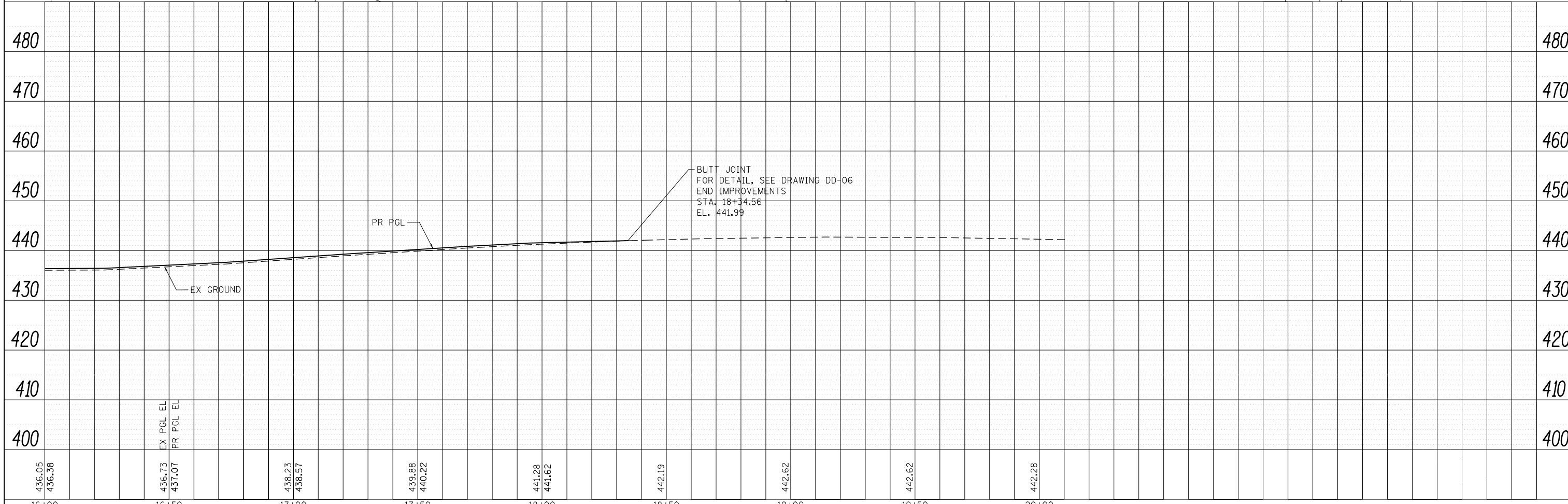
PLAN	SURVEYED	DATE
	PLOTTED	
	ALIGNED	
	CHECKED	
	FILED	
	NO.	

PROFILE	SURVEYED	DATE
	PLOTTED	
	GRADES	
	CHECKED	
	STRUCTURE	
	NOTATIONS	
	CHKD	
	NO.	



BENCHMARK		
BENCHMARK	ELEVATION	DESCRIPTION
BM10	440.60	CUT SQUARE ON THE SE CORNER OF THE FOUNDATION OF AN ABOVE GROUND SIGNAL CONTROL BOX IN THE NW QUADRANT OF RTE 13 WBL AND DIVISION ST, AT CARTERVILLE 69.05' LEFT OF THE CL OF RTE 13 WBL @ STA. 465+73.58

NOTES
 1. FOR ADDITIONAL REMOVAL ITEMS, SEE DRAINAGE AND UTILITY DRAWINGS, PAVEMENT MARKING AND SIGNING DRAWINGS AND SCHEDULE DRAWINGS.



436.05	436.38	436.73	437.07	438.23	438.57	439.88	440.22	441.28	441.62	442.19	442.62	442.62	442.28	480
16+00	16+50	17+00	17+50	18+00	18+50	19+00	19+50	20+00						480

FILE NAME = D:\978258-sh-t-plnprf-16.dgn
CH2MHILL

USER NAME = mfox	DESIGNED - KN	REVISED -
	DRAWN - AS	REVISED -
PLOT SCALE = 40.0000' / in.	CHECKED -	REVISED -
PLOT DATE = 1/31/2013	DATE -	REVISED -

STATE OF ILLINOIS
DEPARTMENT OF TRANSPORTATION

ROADWAY PLAN AND PROFILE
DIVISION STREET NORTH
 SCALE: SHEET NO. 16 OF 32 SHEETS STA. 16+00.00 TO STA. 18+34.56

F.A.P. RTE.	SECTION	COUNTY	TOTAL SHEETS	SHEET NO.
331	(1-4)R-2, N-4, TS-4	WILLIAMSON	381	112
DRAWING NO. PL-16			CONTRACT NO. 78258	
ILLINOIS FED. AID PROJECT				