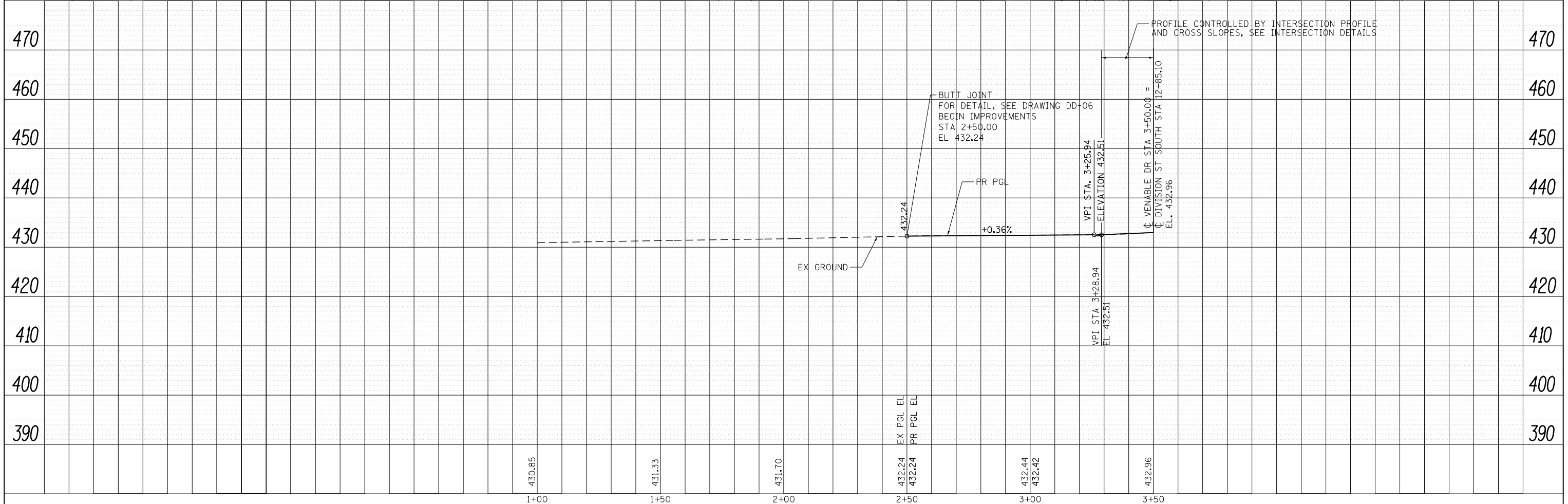
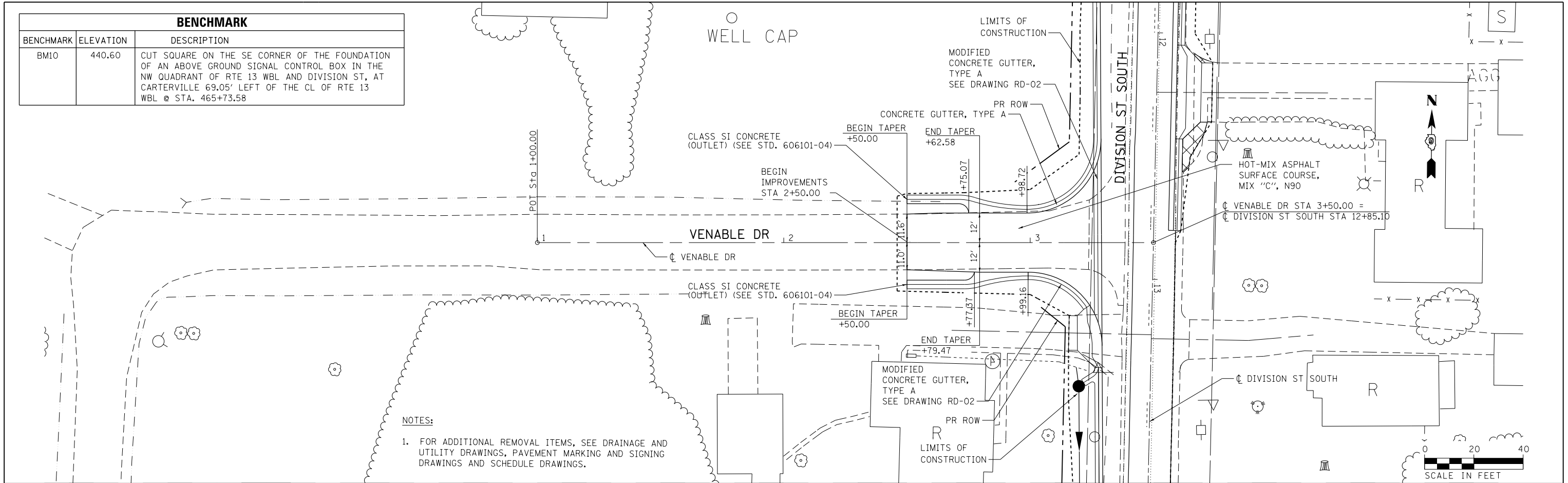


BENCHMARK		
BENCHMARK	ELEVATION	DESCRIPTION
BM10	440.60	CUT SQUARE ON THE SE CORNER OF THE FOUNDATION OF AN ABOVE GROUND SIGNAL CONTROL BOX IN THE NW QUADRANT OF RTE 13 WBL AND DIVISION ST, AT CARTERVILLE 69.05' LEFT OF THE CL OF RTE 13 WBL @ STA. 465+73.58

DATE	BY
PLAN	SURVEYED
NOTE BOOK NO.	PLOTTED
	ALIGNMENT CHECKED
	CAD FILE NAME

DATE	BY
PROFILE	SURVEYED
NOTE BOOK NO.	GRADES CHECKED
	STRUCTURE NOTATIONS CHECKED



FILE NAME = D978258-sh1-plnprf-30.dgn	USER NAME = mfox	DESIGNED - KN	REVISED -	STATE OF ILLINOIS DEPARTMENT OF TRANSPORTATION	ROADWAY PLAN AND PROFILE VENABLE DRIVE		F.A.P. RTE. 331	SECTION (1-4)R-2, N-4, TS-4	COUNTY WILLIAMSON	TOTAL SHEETS 381	SHEET NO. 126
CH2MHILL	PLOT SCALE = 40.0000' / in.	DRAWN - AS	REVISED -		SCALE:	SHEET NO. 30 OF 32 SHEETS	STA. 2+50.00 TO STA. 3+50.00	DRAWING NO. PL-30		CONTRACT NO. 78258	ILLINOIS FED. AID PROJECT
	PLOT DATE = 1/31/2013	CHECKED -	REVISED -								
		DATE -	REVISED -								