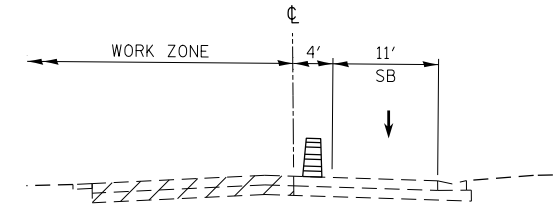
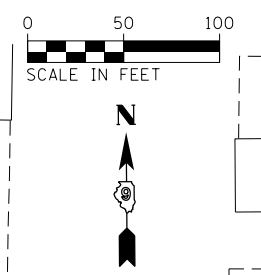


LEGEND

- CONSTRUCTION THIS STAGE
- ROAD CLOSED
- DIRECTION OF TRAVEL/LANE MAINTAINED
- DRUMS, CONES, OR BARRICADE



SECTION - DIVISION ST SOUTH

FILE NAME = D978258-sht-staging-07.dgn CH2MHILL	USER NAME = mfox	DESIGNED - KN	REVISED -	STATE OF ILLINOIS DEPARTMENT OF TRANSPORTATION	SUGGESTED STAGES OF CONSTRUCTION AND TRAFFIC CONTROL IL 13 - STAGE 1F	F.A.P. RTE. 331	SECTION (1-4)R-2, N-4, TS-4	COUNTY WILLIAMSON	TOTAL SHEETS 381	SHEET NO. 135
	PLOT SCALE = 100.0000' / in.	DRAWN - AS	REVISED -			DRAWING NO. TC-07	CONTRACT NO. 78258			
	PLOT DATE = 1/31/2013	CHECKED -	REVISED -			STA. 460+00.00 TO STA. 475+00.00	ILLINOIS FED. AID PROJECT			
	DATE -	REVISED -	SCALE:			SHEET NO. 7 OF 13 SHEETS				